

**General Register Office**  
*for*  
**SCOTLAND**  
*information about Scotland's people*

---

**Household Projections for Scotland**  
**2008-based**

Published on 20 May 2010

---

A National Statistics publication for Scotland

National Statistics are produced to high professional standards set out in the National Statistics Code of Practice. They undergo regular quality assurance reviews to ensure that they meet customer needs. They are produced free from any political interference.



## Contents

1.	Main Points .....	5
2.	Notes on the household projections .....	6
3.	Results .....	7
3.1.	Overall number of households .....	7
3.2.	Type of household .....	7
3.3.	Age of head of household .....	8
3.4.	Household type by age of head of household .....	9
3.5.	Household projections by household type and local authority area .....	12
3.6.	Household projections by age of the head of household and local authority area .....	14
3.7.	Projected average household size by local authority area .....	14
4.	Comparisons with previous household projections .....	15
5.	Low and High migration variant projections .....	17
6.	Household projections methodology .....	19
6.1.	Brief summary of the methodology .....	19
6.2.	Household types and age groups used in the household projections ...	19
6.3.	Household projections methodology part 1: Population projections ....	20
6.4.	Household projections methodology part 2: Household composition ..	20
7.	Definitions, uses and limitations of the household projections .....	22
7.1.	Definitions used in the household projections .....	22
7.2.	Uses .....	22
7.3.	Limitations .....	22
7.4.	Population projections .....	23
7.5.	The use of Census-based trends in household formation patterns .....	23
7.6.	Relationship to other projections .....	23
8.	Related publications .....	24
9.	Notes on statistical publications .....	47

## List of Tables

Table 1	Household projections for Scotland, by type of household, 2008-2033	25
Table 2	Household projections for Scotland, by age of the head of household, 2008-2033	26
Table 3	Projected number of households in Scotland, by household type and age group of the head of household, 2008-2033	27
Table 4	Projected percentage of people living alone, by gender and age group, 2008-2033	28
Table 5	Household projections for Scotland, by local authority area, 2008-2033: All Households	29
Table 6	Household projections by local authority area and household type, 2008 and 2033: Percentage of households of each type	30
Table 7	Household projections for Scotland, by local authority area, 2008-2033: One adult households	31
Table 8	Household projections for Scotland, by local authority area, 2008-2033: Households with one adult and one or more children	32
Table 9	Household projections for Scotland, by local authority area, 2008-2033: Households with two or more adults and no children	33
Table 10	Household projections for Scotland, by local authority area, 2008-2033: Households with two or more adults and one or more children	34
Table 11	Household projections for Scotland, by local authority area and age group, 2008-2033: Percentage of households headed by someone in each age group	35
Table 12	Household projections for Scotland, by local authority area and age group, 2008-2033: Households headed by someone aged 16-29	36
Table 13	Household projections for Scotland, by local authority area and age group, 2008-2033: Households headed by someone aged 30-44	37
Table 14	Household projections for Scotland, by local authority area and age group, 2008-2033: Households headed by someone aged 45-59	38
Table 15	Household projections for Scotland, by local authority area and age group, 2008-2033: Households headed by someone aged 60-74	39
Table 16	Household projections for Scotland, by local authority area and age group, 2008-2033: Households headed by someone age 75+	40
Table 17	Projected average household size, by local authority area, 2008-2033	41
Table 18	Comparison between principal, low and high migration variant household projections by local authority area, 2013-2033	42

[Detailed Tables](#) - for single years are also available on the General Register Office for Scotland (GROS) website.

## List of Figures

Figure 1	Projected number of households in Scotland by household type, 2008 and 2033	8
Figure 2	Projected number of households in Scotland by age of head of household, 2008 and 2033	9
Figure 3a	Percentage of people living alone in 2008, by age and gender	10
Figure 3b	Projected percentage of people living alone in 2033, by age and gender	10
Figure 4	Projected number of households in Scotland by household type and age of the head of household, 2008 and 2033	11
Figure 5a	Projected number of households, by local authority area, 2008 and 2033	13
Figure 5b	Projected percentage change in the number of households, by local authority area, 2008 to 2033	13
Figure 6	Comparisons with previous household projections (2002, 2004, 2006 and 2008-based)	15
Figure 7	2006 and 2008-based population and household projections	16
Figure 8	Principal, low and high migration variants, 2008-based population and household projections for Scotland	18
Figure 9	Percentage change in households 2008 to 2033, using the principal, low and high migration variant projections, by local authority area	18

## List of Maps

Map 1	Projected percentage change in households by local authority area, 2008 to 2033	43
Map 2	Projected percentage of households containing one adult with no children by local authority area, 2033	44
Map 3	Projected percentage of households with children by local authority area, 2033	45
Map 4	Projected percentage of households headed by someone aged 60 and over by local authority area, 2033	46

## 1. Main Points

This report gives forward projections of the number of households in Scotland up to 2033, based on the estimated population of Scotland in mid-2008.

### Overall change

- Between 2008 and 2033, the number of households in Scotland is projected to increase by 21 per cent to 2.8 million - an average of 19,250 additional households per year.
- Over the same period, Scotland's population is projected to increase by seven per cent. Most of the projected increase, therefore, is the result of more people living alone or in smaller households. The average household size is projected to decrease from 2.18 people in 2008 to 1.93 in 2033.
- Scotland's population is ageing, with a projected increase in the number of people in the older age groups (60+) and fewer people in the younger age groups (0-59). This has an impact on household structure, as children tend to live in larger households and older people in smaller ones.

### Household type

- There is a large projected increase in households containing just one adult, from 841,000 (36 per cent of all households) in 2008 to over 1.25 million (45 per cent) in 2033.
- Older women are more likely to live alone than older men. But the number of men living alone is projected to increase more rapidly, from 370,000 households in 2008 to 578,000 in 2033, an increase of over a half. The number of men living alone who are aged 85 or over is projected to increase from 12,000 to 40,000.
- There are also projected increases in other small households. Households containing just two adults without children are projected to rise from 702,000 to 866,000, however there is a projected 21 per cent decrease in the number of households of two or more adults without children in the 40-59 age groups. The number of households containing one adult with children is projected to rise from 163,000 to 238,000.
- In contrast, the number of larger households is projected to fall, with households containing two or more adults with children decreasing from 433,000 (19 per cent of all households) in 2008 to 315,000 (11 per cent) by 2033. There is also a projected decrease in the number of households containing three or more adults, from 192,000 to 140,000.

### Age group

- Households headed by people aged 60 or over are projected to increase by almost 50 per cent from 783,000 to 1.15 million between 2008 and 2033. In contrast, households headed by someone aged under 60 are projected to increase by just seven per cent, to around 1.66 million. The number of households headed by someone aged 85 or over is projected to more than double from 73,000 to 196,000.

## Local authority figures

- The largest projected increases in the number of households between 2008 and 2033 are in Clackmannanshire (41 per cent), East Lothian (40 per cent) and Perth and Kinross (38 per cent). Aberdeenshire, City of Edinburgh, West Lothian, and Orkney Islands also have projected increases of over 30 per cent. In contrast, Inverclyde has a projected decrease of five per cent.

## 2. Notes on the household projections

- **Uses:** Household projections are mainly used for informing local authority decisions about future housing need and service provision.
- **Interpreting the projections:** These household projections have limitations. A projection is a calculation showing what happens if particular assumptions are made. The household projections are based on the population projections and, as a result, assumptions used for the population projections, such as future migration, fertility and mortality, will have an effect on the household projections. The household projections rely on trends in household composition between the 1991 and 2001 Censuses and are not policy-based forecasts of what the Government expects to happen. They do not take into account social and economic factors that may influence the formation of households including policies adopted by both central and local government as well as any imbalances between housing supply and demand. In addition, projections for small groups are likely to be less reliable than those for larger groups.
- **Method used:** Household projections are produced every two years. This set of household projections has been prepared up to 2033, a projection period of 25 years. These household projections incorporate information from the latest (2008-based) population projections and the 2008 and 2009 household estimates. Information from the last two Censuses is also used to project trends in household composition. In previous household projections results were presented for 10 age bands, this has now been expanded to 16 age bands. More detailed information on new age bands that are possible is available in [Section 6](#).
- **Variant projections:** This report focuses on the “principal projection” but also includes a section on household projections prepared using low and high migration variant population projections which demonstrate the uncertainty in the projections.

### 3. Results

#### 3.1 Overall number of households (Table 1)

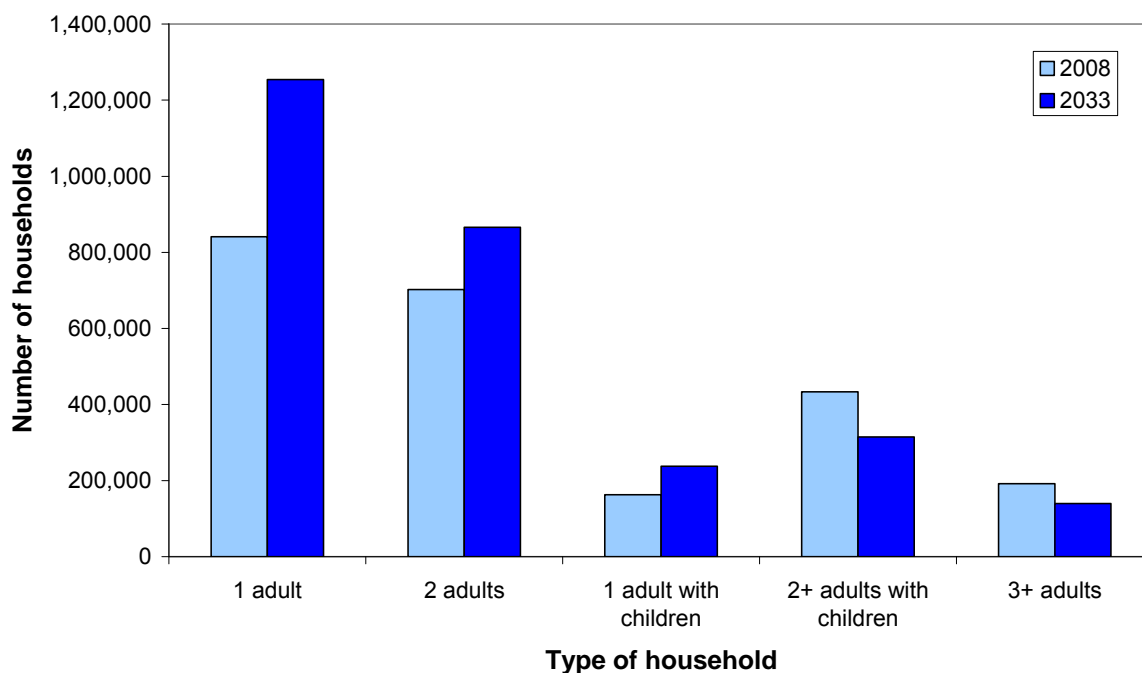
The number of households in Scotland is projected to increase from 2.3 million to 2.8 million between 2008 and 2033 - an increase of 21 per cent. Over the same period, the projected increase in Scotland's population is seven per cent. Most of the 21 per cent increase in the number of households is therefore due to more people living alone or in smaller households. The average household size is projected to decrease from 2.18 in 2008 to 1.93 in 2033. This reflects a continuation of the long-running decline in average household size. In 1971 the average household size was around three people.

The projected yearly increase in the number of households is 19,250. It is higher in the earlier part of the projection period than the later years. In the first 10 years of the projection period, the average annual increase is nearly 21,900 households, compared with 17,500 in the final 15 years of the projection period. The average annual increase declines over time since the average annual increase in population also tends to decrease over the projection period. This is a result of the changes in the underlying assumptions on the number of births and deaths and the level of net migration.

#### 3.2 Type of household (Table 1)

Figure 1 shows the projected number of households of each type, in 2008 and 2033. There is a large increase in the number of adults living alone, from 841,000 (36 per cent of all households) in 2008 to over 1.25 million (45 per cent) by 2033. Households containing just two adults without children are projected to rise from 702,000 to 866,000, and the number of households containing one adult with children is projected to rise from 163,000 to 238,000. In contrast, the number of larger households is projected to fall, with households containing two or more adults with children decreasing from 433,000 (19 per cent of all households) in 2008 to 315,000 (11 per cent) by 2033. There is also a projected decrease in the number of households containing three or more adults, from 192,000 to 140,000.

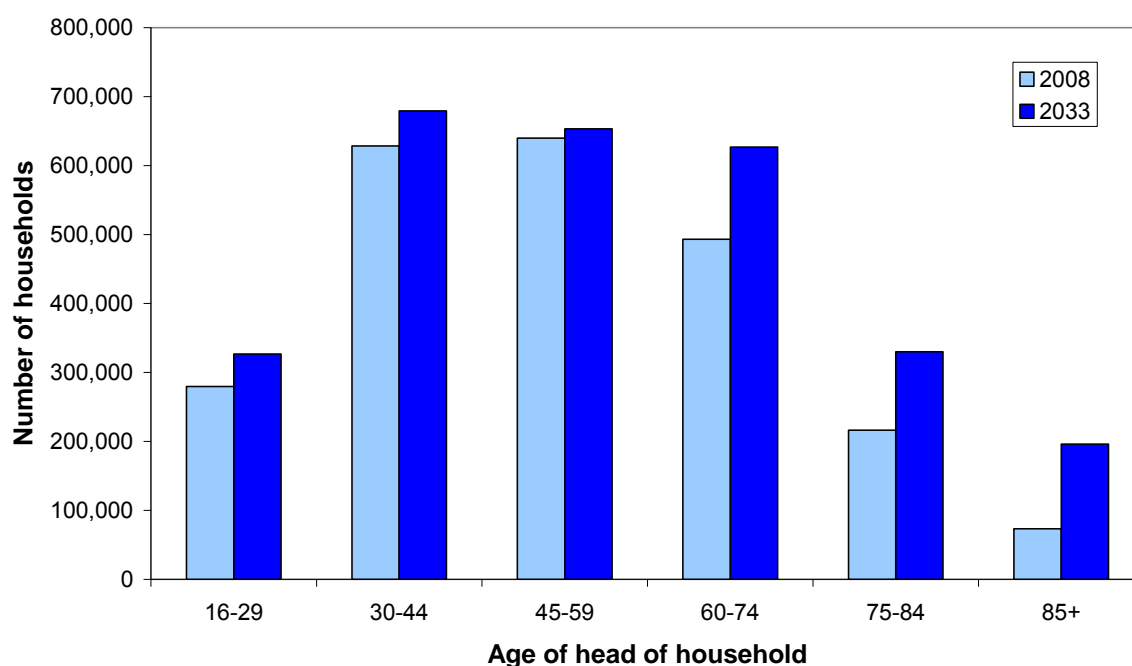
**Figure 1: Projected number of households in Scotland by household type, 2008 and 2033**



### 3.3 Age of head of household (Table 2)

Figure 2 shows the projected number of households in 2008 and 2033, by the age of the head of household (the 'head' of household is normally the first person entered on the Census form). The population projections show that Scotland's population is ageing, with a projected increase in the number of people in the older age groups (60+), and fewer people in the younger age groups (0-59). This trend is reflected in the household projections, with the largest increases shown in households headed by people aged 60 and over (an increase of almost 50 per cent between 2008 and 2033, from 783,000 to 1.15 million). In contrast, households headed by someone aged under 60 are projected to increase by just seven per cent, to around 1.66 million. The number of households headed by someone aged 85 or over is projected to more than double from 73,000 to 196,000.

**Figure 2: Projected number of households in Scotland by age of head of household, 2008 and 2033**

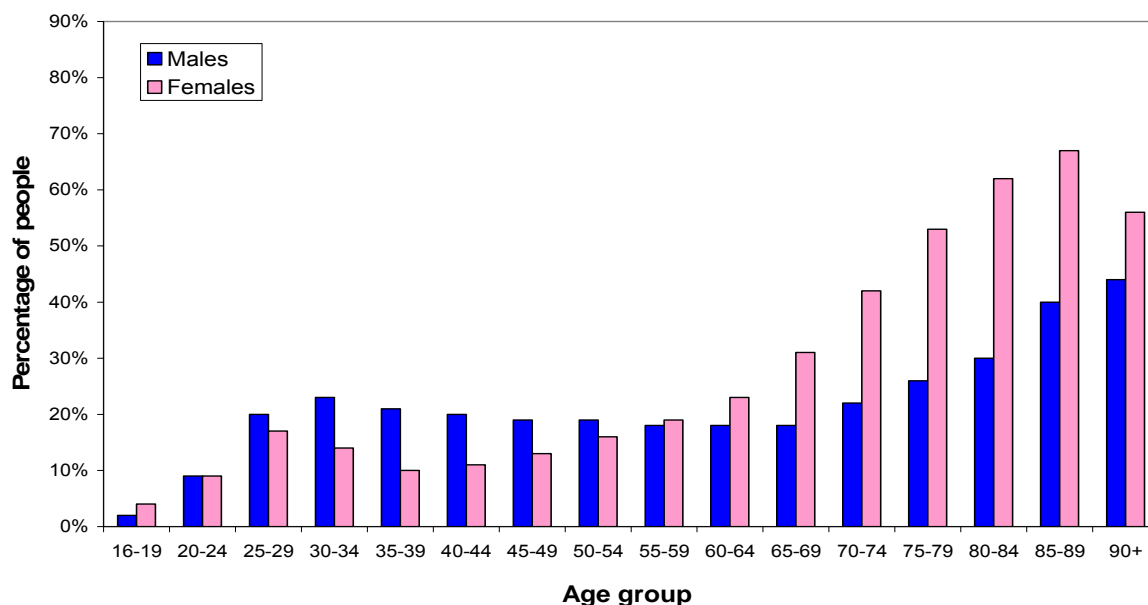


### 3.4 Household type by age of head of household (Tables 3 and 4)

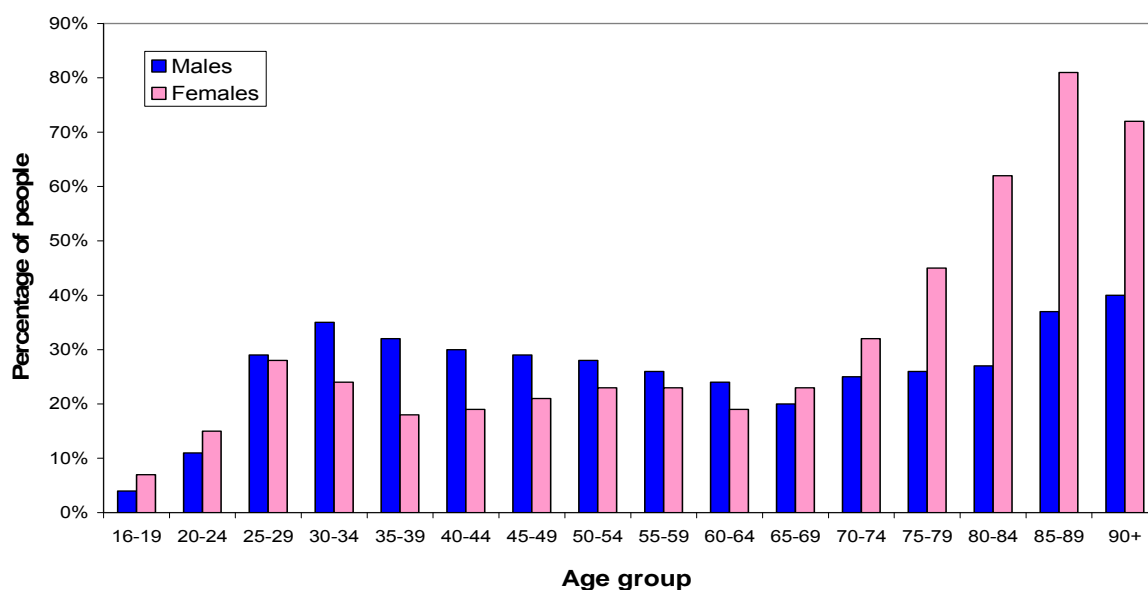
**One adult households:** In 2008, 20 per cent of the population aged 16 or over lived alone, and this is projected to rise to 29 per cent by 2033. The figures in Table 4 show that people are more likely to live alone as they become older, with 62 per cent of people aged over 85 projected to be living alone in 2033. The figures vary according to gender and age, as illustrated in Figures 3a and 3b. In 2008, in most age groups up to their mid-50s, men are more likely to live alone than women. From the age of 55 onwards, however, women are more likely to live alone, and the figures increase with age. This is influenced by women’s greater life expectancy, and the tendency of women to marry men who are older than them. In 2033, 77 per cent of women aged over 85 are projected to live alone compared to 38 per cent of men in the same age group.

The gap between the average life expectancy of men and women in Scotland is decreasing. This means that the number of older men is projected to increase more rapidly than the number of older women, which contributes to the projected increase in the number of men living alone, from 370,000 households in 2008 to 578,000 in 2033, an increase of over a half. The number of men living alone who are aged 85 or over is projected to increase from 12,000 to 40,000.

**Figure 3a: Percentage of people living alone in 2008, by age and gender**

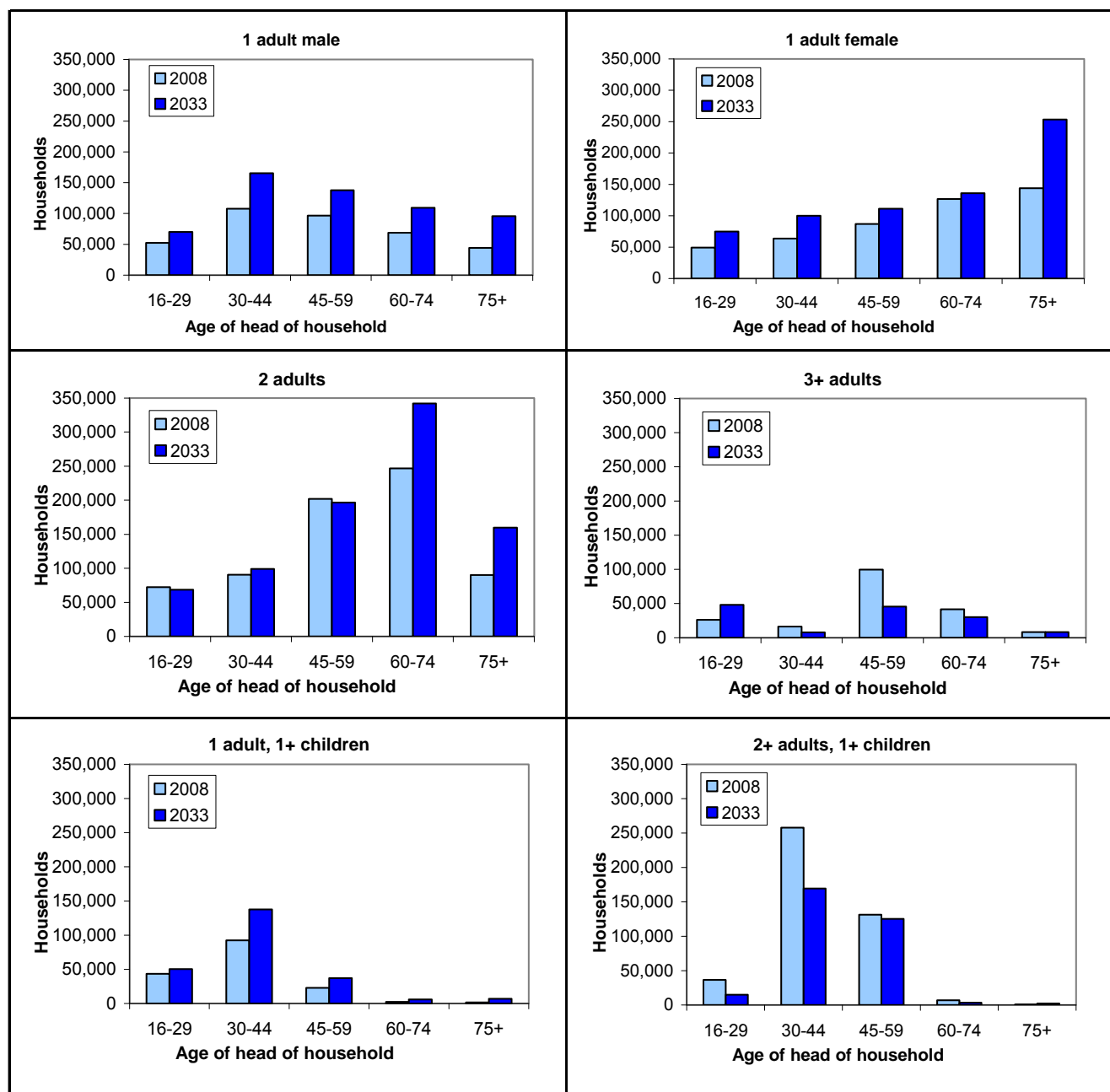


**Figure 3b: Projected percentage of people living alone in 2033, by age and gender**



**Households containing two or more adults without children:** There are large projected increases in the number of households containing two adults without children in the older age groups, which is likely to be influenced by the increase in average life expectancy and the narrowing of the gap between the life expectancy of men and women. The number of two or more adult households headed by someone aged 60 or over is projected to increase by 40 per cent, from 390,000 in 2008 to 540,000 in 2033. In contrast, [Figure 4](#) illustrates that the number of households with three or more adults is declining over the projection period in all age groups except for those aged 16-29. Households with three or more adults in this youngest age group are projected to increase by over 80 per cent from 26,000 in 2008 to 48,000 in 2033.

**Figure 4: Projected number of households in Scotland by household type and age of the head of household, 2008 and 2033**



**Households containing one adult with children:** In 2008, seven per cent of all households consisted of one adult living with one or more children, and this is projected to increase to eight per cent in 2033. There are projected increases in the number of households of this type for all age groups, particularly those aged 45 and over.

**Households containing two or more adults with children:** In 2008, 19 per cent of households contained two or more adults with children; this figure is projected to fall to 11 per cent by 2033. There are reductions in most age groups, with the biggest reductions occurring in the 20-29 age groups, which may reflect an increase in the average age at which women have their first child.

### 3.5 Household projections by household type and local authority area (Tables 5-10)

Household projections by household type and age group for all 32 local authority areas can be found in the Household Projections section of the GROS website. It should be noted that projections for areas with small populations tend to be less reliable than those for areas with larger populations.

**Total number of households by local authority area (Table 5):** The number of households in almost every local authority area is projected to increase. Figure 5a shows the projected number of households in each local authority area in 2008 and 2033.

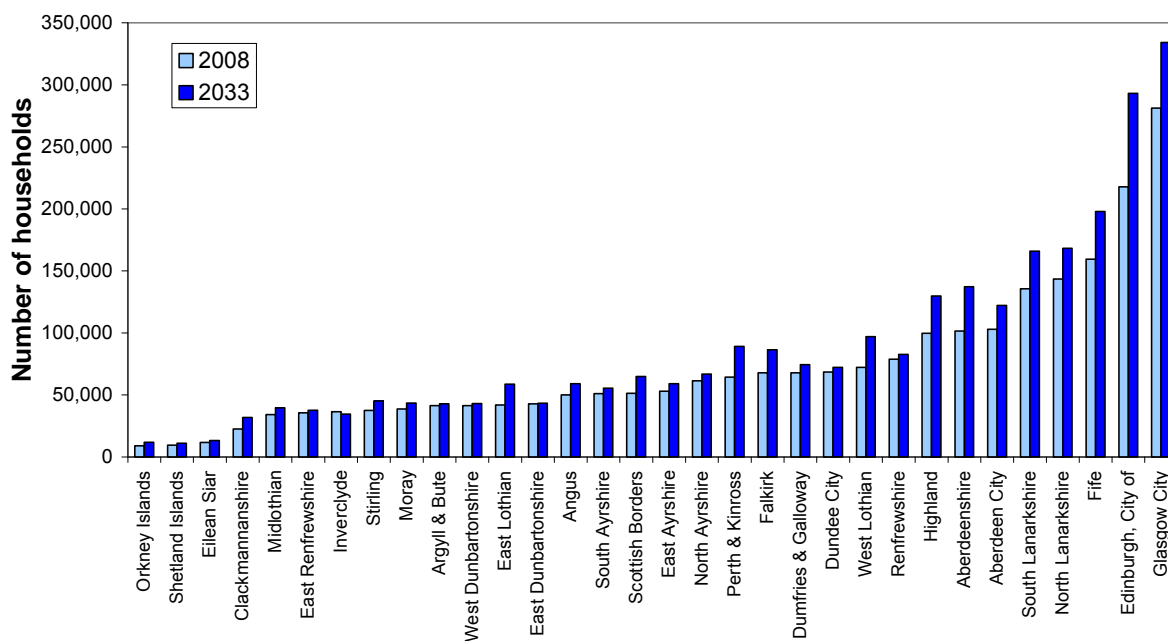
Figure 5b shows the projected percentage change in the number of households between 2008 and 2033 and Map 1 also shows this information. The largest projected increases in the number of households between 2008 and 2033 are in Clackmannanshire (41 per cent), East Lothian (40 per cent) and Perth and Kinross (38 per cent). Aberdeenshire, City of Edinburgh, West Lothian and Orkney Islands also have projected increases of over 30 per cent. In contrast, Inverclyde has a projected decrease of five per cent.

**One adult households (Tables 6 and 7):** Map 2 shows the projected percentage of households which contain just one adult, in each local authority area, in 2033. Some of the highest proportions of people living alone, comprising between 48 and 54 per cent of all households are in Aberdeen City, Dundee City, Glasgow City, Inverclyde and West Dunbartonshire in 2033, compared to a Scottish average of 45 per cent. In every local authority area there is a projected increase in the number of people living alone between 2008 and 2033 and the highest projected increase occurs in Clackmannanshire (81 per cent).

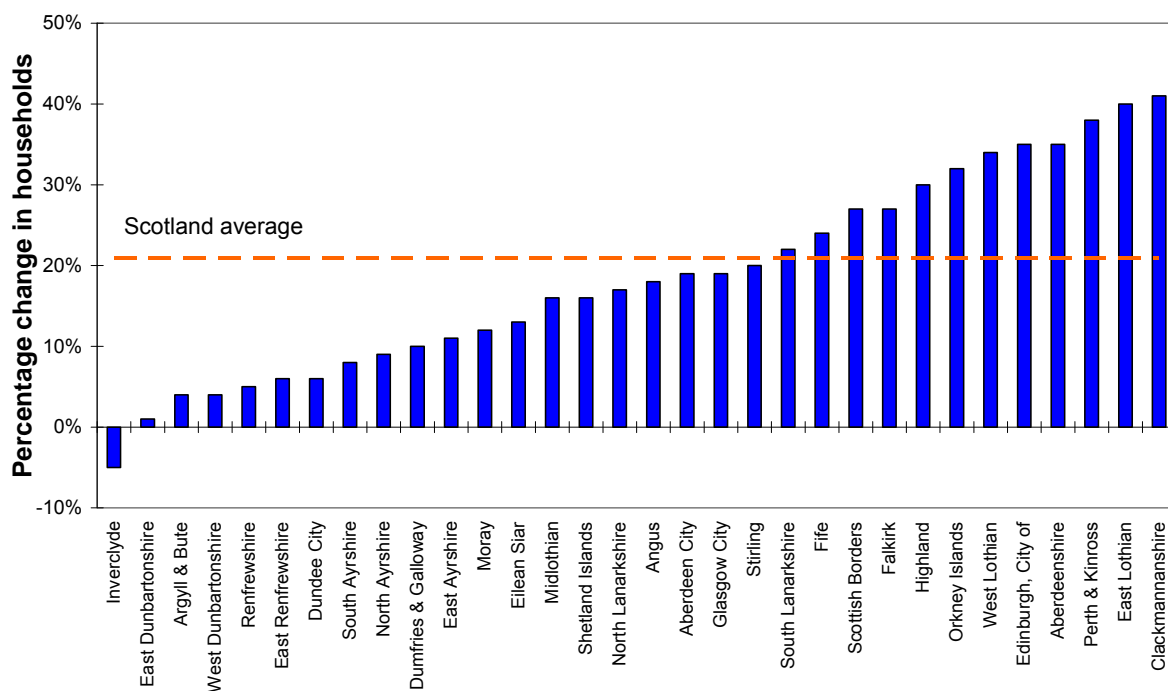
**Households containing one adult with children (Tables 6 and 8):** Almost all local authority areas are projected to see an increase in the number of households consisting of one adult with one or more children, except for Moray which shows a decrease of five per cent between 2008 and 2033. The highest percentage increase occurs in East Lothian where the number of households of this type is projected to more than double to 5,700 households in 2033 compared to the average increase in Scotland of 46 per cent. Clackmannanshire, Glasgow City, Midlothian and North Lanarkshire are projected to have the highest proportion of households of this type in 2033 (11 per cent). The smallest proportions are in Moray and Orkney Islands (two and four per cent respectively of all households in these areas).

**Households containing two or more adults without children (Tables 6 and 9):** The proportion of households consisting of two or more adults but no children in 2033 is projected to vary from 26 per cent in Glasgow City to 44 per cent in Moray with an average Scotland figure of 36 per cent.

**Figure 5a: Projected number of households, by local authority area, 2008 and 2033**



**Figure 5b: Projected percentage change in the number of households, by local authority area, 2008 to 2033**



**Households containing two or more adults with children** (Tables 6 and 10): The number of households containing two or more adults with children is projected to decrease in every local authority area apart from East Lothian, between 2008 and 2033. Aberdeen City, Eilean Siar, Glasgow City and North Ayrshire are projected to have the smallest proportions of these larger households – eight to nine per cent in 2033, compared to between 14 to 18 per cent in 2008. The highest percentage of households of this type is projected to be in East Renfrewshire and East Lothian (18 and 16 per cent of all households respectively), though East Renfrewshire shows a projected decrease (27 per cent) between 2008 and 2033. Map 3 shows the projected percentage of households containing children (whether there are one, two or more adults), in each local authority area in 2033.

### **3.6 Household projections by age of the head of household and local authority area** (Tables 11-16)

Every local authority area in Scotland is projected to see an increase in the number of households headed by someone aged 60-74. The largest projected increases are in West Lothian (51 per cent) and Aberdeenshire (47 per cent). In most local authority areas, even larger increases are projected in the number of households headed by someone aged 75 or over. The figures are projected to more than double in Aberdeenshire, Clackmannanshire, Highland, Moray, Orkney Islands, Scottish Borders, Shetland Islands and West Lothian. In contrast, the city authorities are projected to have some of the smallest increases in this age group. Map 4 shows the projected percentage of households headed by someone aged 60 and over in 2033.

### **3.7 Projected average household size by local authority area** (Table 17)

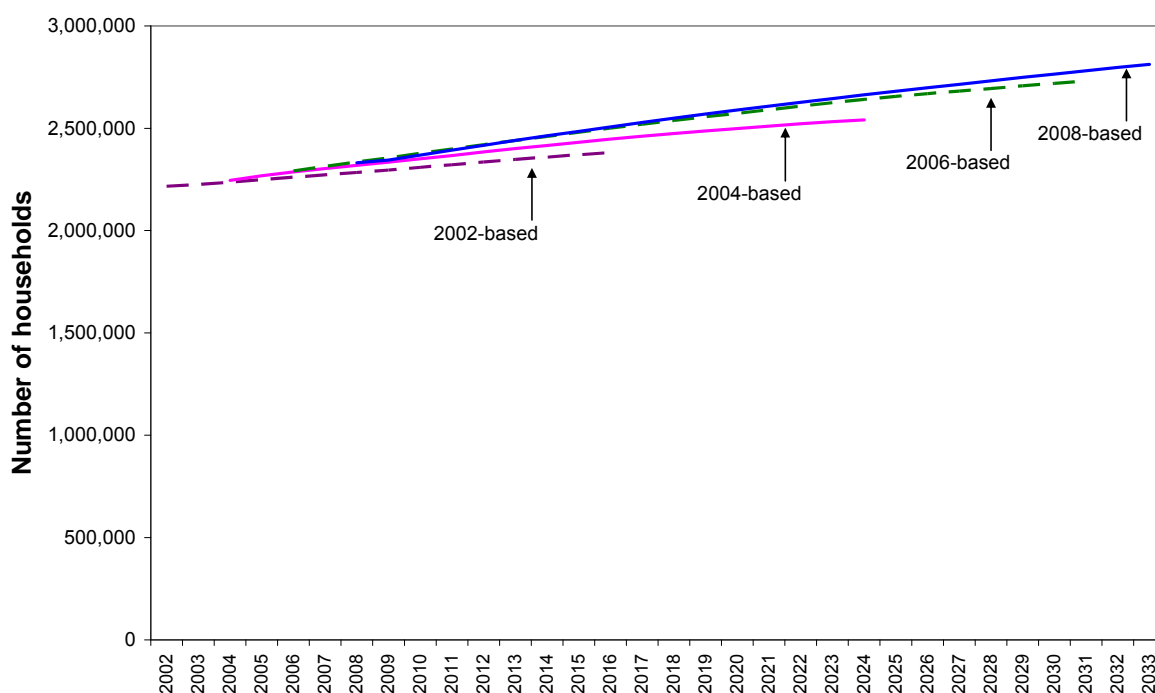
The average household size is projected to decrease in every local authority area in Scotland. The areas with the largest projected average household size in 2033 are East Renfrewshire (2.26) and East Lothian (2.13). The areas with the smallest average household size in 2033 are the four main cities of Aberdeen, Dundee, Glasgow and Edinburgh, and the three island authorities of Eilean Siar, Orkney Islands and Shetland Islands (between 1.72 and 1.84). The average household size is projected to be less than two people for almost three quarters of the local authority areas in 2033.

## 4. Comparisons with previous household projections

Household projections for Scotland are published every two years. [Figure 6](#) compares the total number of households projected by the latest (2008-based) household projections, and previous projections. In the past, household projections covered a 14-year period but, in response to demand from users, the 2004-based household projections covered a 20-year period and the 2006 and 2008-based projections cover a 25-year period.

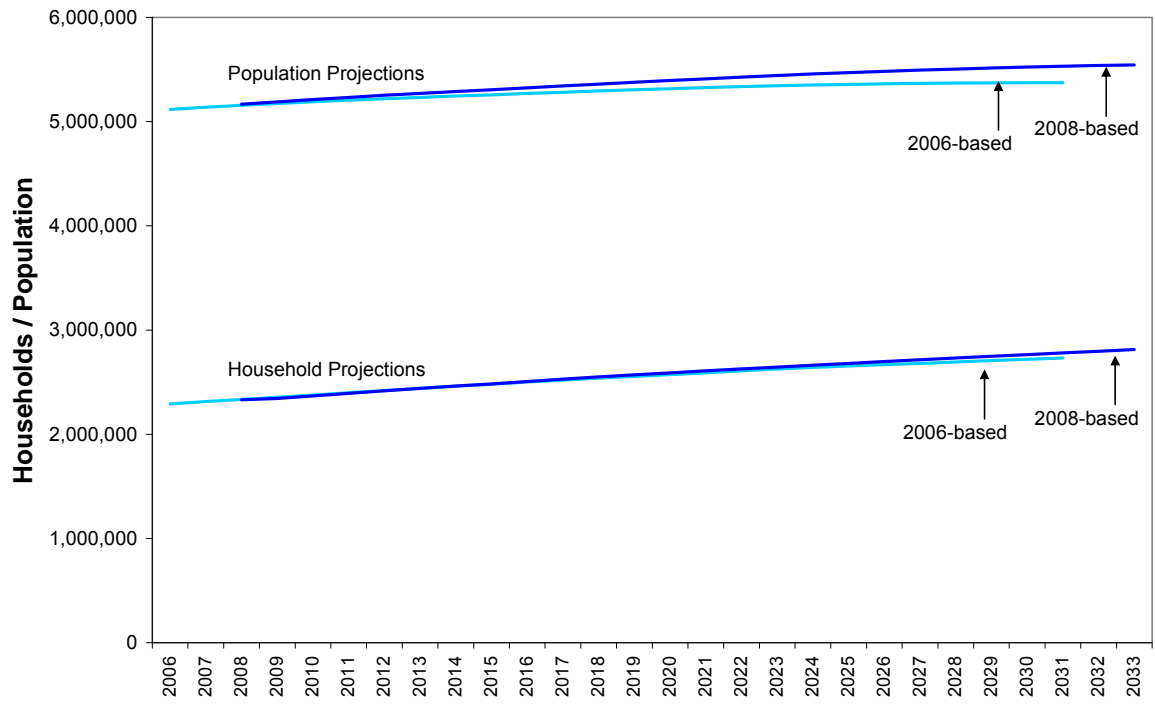
The 2006-based projections suggested an average increase of around 17,590 households per year between 2006 and 2031; the 2008-based projections foresee an average increase of around 19,250 households per year between 2008 and 2033. Given that the two sets of projections cover different time periods, it is difficult to compare these figures directly. To provide a more direct comparison, we can select the period of 2008 to 2031, when the 2006-based projections showed an average annual increase of 17,240 households, while the 2008-based projections show an average annual increase of 19,520.

**Figure 6: Comparisons with previous household projections (2002, 2004, 2006 and 2008-based)**



[Figure 7](#) shows the 2006 and 2008-based population and household projections. The 2008-based population projections were higher than the previous set of projections, due to a combination of higher net migration into Scotland, a slightly higher projected birth rate and a slightly lower projected death rate. The household projections are based on the population projections, which is why the 2008-based household projections are higher than the 2006-based projections.

**Figure 7: 2006 and 2008-based population and household projections**



## 5. Low and High migration variant projections (Table 18)

Variant projections provide a broad indication of the sensitivity of the household projections to the demographic assumptions that are used to produce them. The principal household projections are based on the principal population projections produced by GROS which use assumptions about fertility, mortality and migration which are thought most likely to occur over the next 25 years. Variant projections are based on alternative assumptions of future fertility, mortality and migration. For the 2008-based population projections, GROS produced a low migration variant projection in addition to the high migration variant at sub-national level for the first time.

Low and high migration variant projections use the same assumptions about fertility and mortality as the principal projection but assume varied levels of net in-migration to Scotland<sup>1</sup>. The migration assumptions by council area can be found in Annex C and Annex D of the 2008-based Population Projections for Scottish Areas (<http://www.gro-scotland.gov.uk/statistics/publications-and-data/popproj/projected-population-of-scotland-2008-based/index.html> )

Migration variant household projections are calculated by replacing the principal population projections with variant migration population projections and keeping all other inputs (communal establishment rates, headship rates, household estimates) unchanged.

The principal household projection shows the number of households in Scotland increasing from 2.33 million in 2008 to 2.81 million in 2033. This compares to 2.70 million households for the low migration variant and 2.93 million households for the high migration variant in 2033. [Figure 8](#) illustrates this along with the projected increase in population for the principal and variant projections.

The average annual increase in the number of households is 14,570 for the low migration variant and 23,920 for the high migration variant, compared to 19,250 for the principal projection.

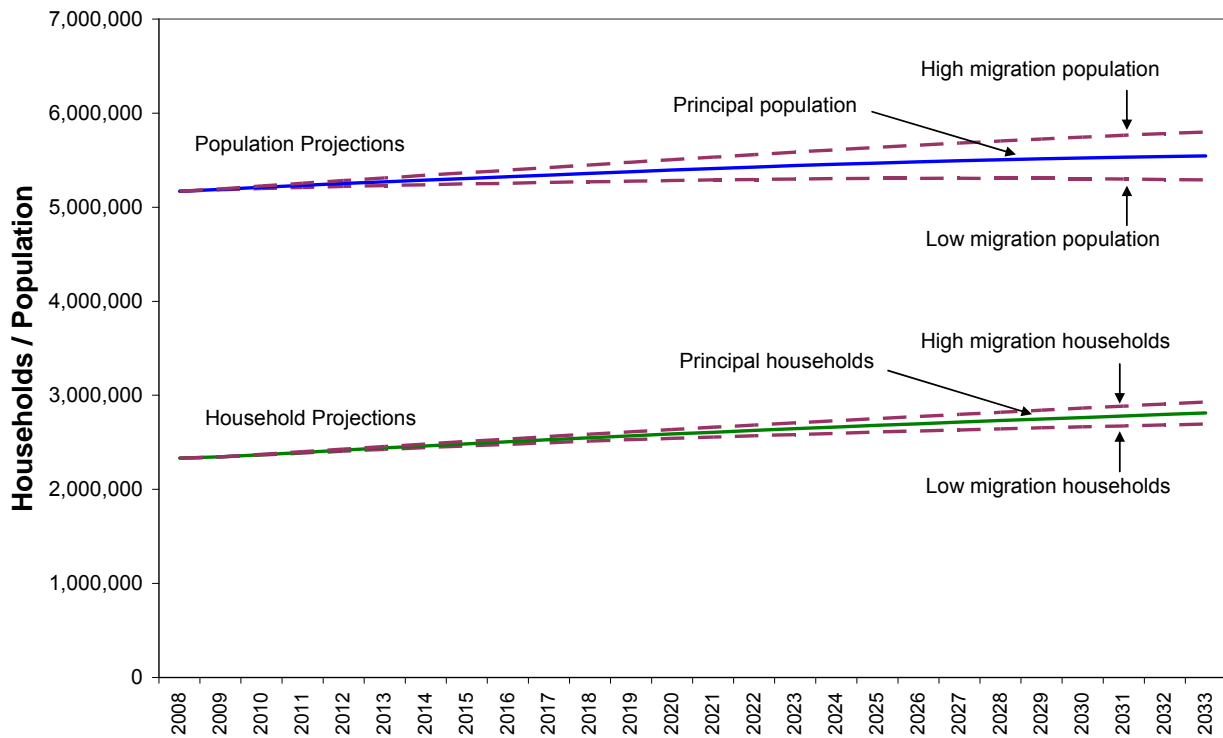
[Table 18](#) shows the projected number of households for each local authority area under both the principal, low and high migration variant for selected years as well as the percentage difference between the projections in 2033. The low migration variant has the biggest impact on Aberdeen City (where the number of households is 10 per cent lower than under the principal projection). The high migration variant has the biggest impact on City of Edinburgh and Perth and Kinross (where the number of households is seven per cent higher than under the principal projection).

[Figure 9](#) compares the percentage change in households from 2008 to 2033 under the principal, low and high migration variant projections. The impact of low and high migration variants on different local authority areas can again be seen here.

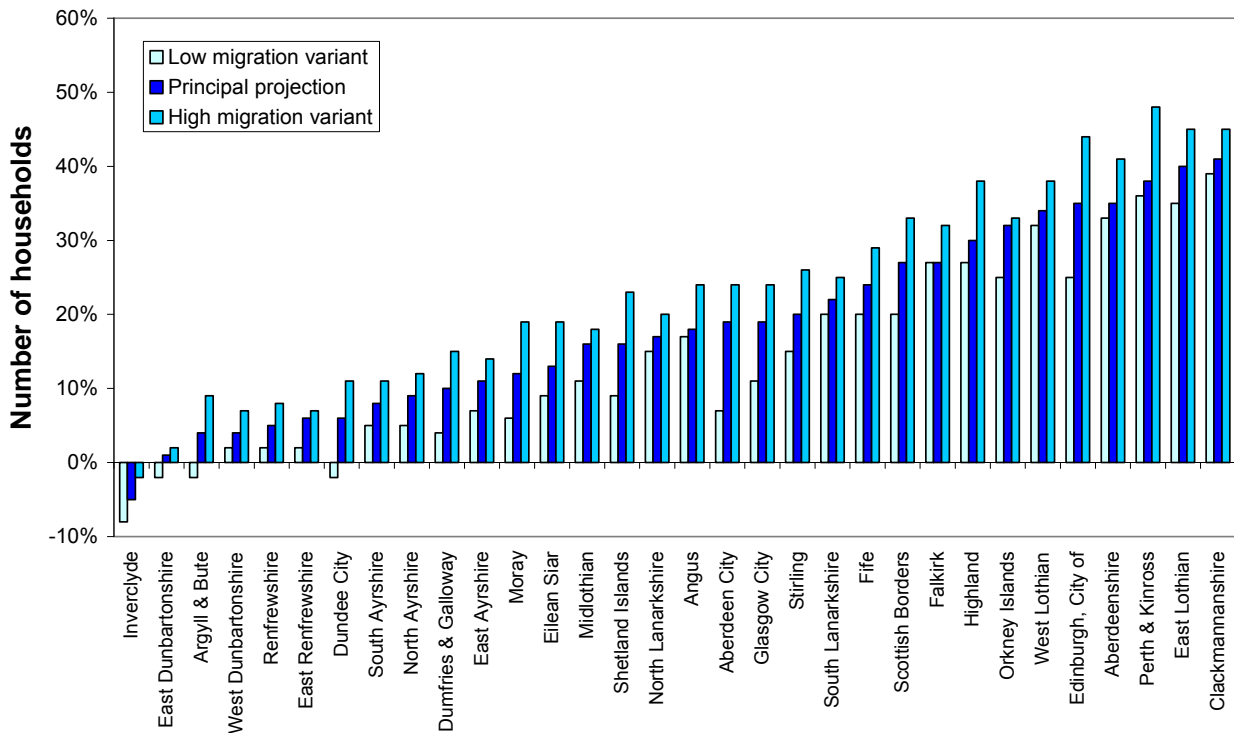
---

<sup>1</sup> Only moves to and from the rest of the UK and overseas are affected. The number of people moving between council areas within Scotland does not change from the principal projection. Thus the projections for council areas where the population is most affected by migration within Scotland will not change as much as those where international migration has a greater effect.

**Figure 8: Principal, low and high migration variants, 2008-based population and household projections for Scotland**



**Figure 9: Percentage change in households 2008 to 2033, using the principal, low and high migration variant projections, by local authority area**



## 6. Household projections methodology

### 6.1 Brief summary of the methodology

Household projections are based on the population projections produced by the General Register Office for Scotland (GROS). The number of people living in private households is estimated by taking the population projections for each year and subtracting the number of people living in communal establishments, such as student halls of residence, care homes or prisons. To estimate the number of households of each type, information on household type and age group is projected forward from the 1991 and 2001 Censuses, for each household type, age group and local authority area. This information is applied to the private household population to produce the basic household projections.

Because the overall projections for Scotland are believed to be more accurate than those for individual local authorities, the local authority figures are constrained to the Scottish total. Each year, GROS produces household estimates based on Council Tax data. ([www.gro-scotland.gov.uk/statistics/publications-and-data/household-estimates-statistics/index.html](http://www.gro-scotland.gov.uk/statistics/publications-and-data/household-estimates-statistics/index.html)). These estimates do not include information on household type or age group, but they provide an overall estimate of the number of households in each local authority area, which is based on more up-to-date data than the household projections. Therefore, the household projections for 2008 and 2009 are adjusted to match the household estimates for these years, and the household projections for 2010 onwards are adjusted by the same proportion as the 2009 figures, to preserve the proportion over time.

### 6.2 Household types and age groups used in the household projections

Household projections are produced for each local authority area, broken down into seven household types (based on the number of adults and children living in the household) and sixteen age groups, as follows:

**Table A: Household types and age groups used in the household projections**

Household types	Age group
<b>1 person households:</b>	16-19
1 adult: male	20-24
1 adult: female	25-29
<b>2 person households:</b>	30-34
2 adults	35-39
1 adult, 1 child	40-44
<b>3+ person households:</b>	45-49
1 adult, 2+ children	50-54
2+ adults, 1+ children	55-59
3+ adults	60-64
	65-69
	70-74
	75-79
	80-84
	85-89
	90+

### 6.3 Household projections methodology part 1: Population projections

The first main input into the household projections is the 2008-based population projections for Scotland produced by the General Register Office for Scotland (GROS). These are produced for Scotland by local authority, sex and single year of age, using assumptions about births, deaths and migration. More information about the population projections, and the assumptions used to produce them, can be found in '2008-based Population Projections for Scottish Areas' ([www.gro-scotland.gov.uk/statistics/publications-and-data/popproj/2008-based-pop-proj-scottish-areas/index.html](http://www.gro-scotland.gov.uk/statistics/publications-and-data/popproj/2008-based-pop-proj-scottish-areas/index.html)). The relevant population for household formation is taken to be the adult population, aged 16 or over.

The projected number of households is derived from projections of the numbers of people living in private households. To obtain this from the population data, estimates of the number of people living in communal establishments are subtracted from the total population for each projection year. Estimates of the proportion of the population living in communal establishments in 2008, by gender and age group were collected from various sources. Local authorities were then consulted on these figures, and the figures were amended as appropriate, based on local authorities' more detailed local knowledge. The final communal establishment proportions were then applied to the GROS population projections for each year. This methodology assumes constant proportions of people living in communal establishments for each of the 25 projection years.

### 6.4 Household projections methodology part 2: Household composition

The second main input to the household projections is the information on household composition from the 1991 and 2001 population Censuses. The proportions of households by local authority area, household type, and age group of the head of household are known for 1991 and 2001. The proportions of each household type sum to one within each age group within each local authority area.

An example of the Dumfries and Galloway 2001 Census data for persons aged 35 to 44 years old is given below.

**Table B: Number and proportion of heads of households aged 35-44 by household type: Dumfries and Galloway 2001**

Type of household	Number	Proportion
1 adult: male	1,279	0.059
1 adult: female	673	0.031
2 adults	1,585	0.073
1 adult + 1 child	533	0.025
1 adult, 2+ children	687	0.032
2+ adults, 1+ children	6,587	0.304
3+ adults	545	0.025
People who are not a head of household	9,809	0.452
<b>Total people in age group</b>	<b>21,698</b>	<b>1.000</b>

Source: 2001 Census

The number of people who head particular household types will be the same as the number of households of this type. The proportion of these within any particular age group and local authority area is known as the 'headship' rate and it is this that is projected forwards and then applied to the population projections (by age group and local authority area) to give the household projections. We also know the number of people in each area and age group who are not the head of household, for which 'non-headship' rates are calculated.

1991 headship rates have changed due to a small revision to 1991 census data. This makes no difference to household projections at Scotland level. For the local authorities affected the differences are less than 20 households by the end of the projection period.

The headship (and non-headship) rates are projected forward using the modified two-point exponential model, the formula for which is as follows:

$$y_i = k + ab^{x_i}$$

where  $i$  = the year, from 2009 to 2033

$y_i$  = headship rate in year  $i$

$k = 1$  if  $y_{2001} \geq y_{1991}$

0 if  $y_{2001} < y_{1991}$

$a = y_{1991} - k$

$b = (y_{2001} - k)/(y_{1991} - k)$

$x_i = (i - 1991)/(2001 - 1991)$

The projected headship (and non-headship) rates are constrained in two ways:

- they cannot individually go above 1 or below 0; and
- they sum to 1 within an area and age group.

The household projections are then calculated by applying these projected headship rates to the population projections to give an estimate of the number of heads of household in each of the projection years for each household type, age group of the head of household, and area.

These figures are then controlled, so that figures for local authorities sum to the total for Scotland.

The total number of households within each local authority in 2008 and 2009 is then adjusted to equal the annual household estimates. The household projections for 2010 onwards are adjusted by the same proportion as the 2009 figures, to preserve the trends.

Finally, the figures are adjusted to ensure that the minimum number of adults required to fill the projected households is not greater than the projected adult private household population (e.g. a minimum of two adults would live in the household type 'two or more adults'), and the same check is carried out for children. Where an adjustment is required, the number of households is kept constant, but the balance of household types is adjusted, to reduce the number of large households and increase the number of smaller households. For the 2008-based household projections, this adjustment was required for Aberdeen City, Dundee City, City of Edinburgh and Orkney Islands.

## 7. Definitions, uses and limitations of the household projections

### 7.1 Definitions used in the household projections

The following definitions are used in this publication:

- **Household:** The 2001 Census definition of a household is used - one person living alone, or a group of people (not necessarily related) living at the same address with common housekeeping (that is, sharing either a living room or sitting room or at least one meal a day). This excludes people living in communal establishments.
- **Private household population:** The population living in private households, i.e. people not living in communal establishments.
- **Communal establishment:** An establishment providing managed residential accommodation, such as a hospital, care home, prison, student hall of residence or barracks. 'Managed' means full-time or part-time supervision of the accommodation.
- **Head of household:** The 'head' of the household is normally the first person entered on the Census form. The number of heads of household will be equal to the number of households.
- **Headship rate:** The proportion of people who head particular household types within any particular age group and local authority area is known as the 'headship' rate
- **Children:** Where children are included in a household type, they mainly consist of children aged 0-15, but they may also include a number of 16-18 year olds classified as dependent children in the Census (mainly people still at school).
- **Average household size:** The average number of people in private households is calculated by dividing the private household population by the number of households.

Figures in the tables are rounded to the nearest ten. Therefore, the totals shown may not be equal to the sum of the constituent parts.

### 7.2 Uses

The main use of the household projections is in contributing to the assessment of future housing need and demand. Local authorities make widespread use of the household projections in assessing future housing need and demand, and as a context for planning decisions. The use of household projections for housing and planning purposes is guided by central government policy and guidance (Scottish Planning Policy 3: *Planning for Housing* (SPP 3) and Housing Need and Demand Assessment Guidance). Projections are only one element to be taken into account in assessing future housing need and demand.

More information about the planning system in Scotland is available from the Scottish Government website at [www.scotland.gov.uk/Topics/Built-Environment/planning](http://www.scotland.gov.uk/Topics/Built-Environment/planning)

### 7.3 Limitations

These household projections have limitations. A projection is a calculation showing what happens if particular assumptions are made. The household projections are trend-based, and are not, therefore, policy-based forecasts of what the Government expects to happen. They do not take into account social and economic factors that may influence the formation of households including policies adopted by both central and local government as well as any imbalances between housing supply and demand. Local planning policies are often intended to modify past trends and development plans may demonstrate departures from the projections that seem better able to fit particular local circumstances.

## **7.4 Population projections**

The household projections are based on the population projections and, as a result, assumptions used for the population projections, such as future migration, fertility and mortality, will have an effect on the household projections. Since smaller areas tend to be affected more by migration, which is hard to predict, projections for these areas tend to be less reliable than those for areas with large populations, and the further into the future the projections are taken, the less reliable they are likely to be.

## **7.5 The use of Census-based trends in household formation patterns**

The household projections use information on household type and age group from the 1991 and 2001 Censuses, projected forward to the end of the projection period. The headship rate is defined as the proportion of people in each age group and household type who are the 'head' of a household.

For these projections, changes in household formation patterns between 1991 and 2001 (the most recent 10 year period) are projected forward to 2033. This method assumes that past trends in household formation will continue, but this may not necessarily be the case. The overall number of households is updated every year, but no information is incorporated on changes in household types between Censuses.

With the assistance of the Household Analysis Review Group, the General Register Office for Scotland is investigating ways to refine the household projections methodology.

## **7.6 Relationship to other projections**

These projections apply a single methodology across all local authority areas. Individual authorities may have a wider range of local information, based for example on local population or household surveys, on which to compile local projections. The supporting material on the GROS website should assist in providing an understanding of the basis of our projections. We are happy to provide additional supporting or background material which users would find useful in assessing and using the projections, where possible. Please contact us at [customer@gro-scotland.gsi.gov.uk](mailto:customer@gro-scotland.gsi.gov.uk)

## 8. Related publications

**GROS household estimates** show annual estimates of the number of households and dwellings in Scotland.

They are available at <http://www.gro-scotland.gov.uk/statistics/publications-and-data/household-estimates-statistics/index.html>

**GROS population estimates and projections** are available from <http://www.gro-scotland.gov.uk/statistics/population/index.html>.

The Scottish Government produces **housing statistics for Scotland**, which are available from <http://www.scotland.gov.uk/Topics/Statistics/Browse/Housing-Regeneration>.

**Scottish Government Planning statistics**, including statistics on vacant and derelict land, are available from <http://www.scotland.gov.uk/Topics/Statistics/Browse/Planning>.

**Household estimates and projections for other parts of the UK** are available from the following sources:

- England: Department for Communities and Local Government:  
<http://www.communities.gov.uk/housing/housingresearch/housingstatistics/housingstatisticsby/householdestimates/>
- Wales: Welsh Assembly Government:  
<http://new.wales.gov.uk/topics/statistics/theme/housing/?lang=en>
- Northern Ireland: Northern Ireland Statistics and Research Agency:  
<http://www.nisra.gov.uk/demography/default.asp3.htm>

You can register with the Scottish Government's ScotStat website, to receive notification of forthcoming household estimates and projections publications, or a range of other statistics on Scotland: <http://www.scotland.gov.uk/Topics/Statistics/scotstat/Intro>.

The following tables 1 to 17 all relate to principal household projections. A comparison between principal, low and high migration variant household projections can be found in table 18.

**Table 1: Household projections for Scotland, by type of household, 2008-2033**

Household size	Household type							Change		Average annual change <sup>1</sup>		
		2008	2013	2018	2023	2028	2033	2008-2033		2008-2033	2008-2018	2018-2033
One person households	1 adult male	370,160	416,960	463,300	504,940	541,820	578,060	207,900	56%	8,316	9,314	7,651
	1 adult female	470,630	512,740	557,000	598,160	637,080	675,940	205,300	44%	8,212	8,637	7,929
Two person households	2 adults	701,910	749,350	796,210	831,290	851,930	865,670	163,770	23%	6,551	9,430	4,631
	1 adult, 1 child	93,980	105,650	115,860	125,830	136,380	146,410	52,430	56%	2,097	2,187	2,037
3+ person households	1 adult, 2+ children	68,900	72,770	78,180	84,450	89,050	91,450	22,550	33%	902	928	885
	2+ adult 1+ children	433,420	398,700	366,940	343,430	329,400	314,970	-118,450	-27%	-4,738	-6,648	-3,465
	3+ person all adult	192,250	184,280	172,430	157,190	146,110	140,000	-52,240	-27%	-2,090	-1,981	-2,162
<b>All households</b>		<b>2,331,250</b>	<b>2,440,440</b>	<b>2,549,930</b>	<b>2,645,300</b>	<b>2,731,760</b>	<b>2,812,520</b>	<b>481,270</b>	<b>21%</b>	<b>19,251</b>	<b>21,868</b>	<b>17,506</b>

<b>Private household population<sup>2</sup></b>	5,071,670	5,170,480	5,256,410	5,332,910	5,386,430	5,416,420	344,750	7%
<b>Average household size<sup>3</sup></b>	2.18	2.12	2.06	2.02	1.97	1.93	-0.25	-11%

**Percentage of all households by household type**

Household size	Household type	2008	2013	2018	2023	2028	2033
One person households	1 adult male	16%	17%	18%	19%	20%	21%
	1 adult female	20%	21%	22%	23%	23%	24%
Two person households	2 adults	30%	31%	31%	31%	31%	31%
	1 adult, 1 child	4%	4%	5%	5%	5%	5%
3+ person households	1 adult, 2+ children	3%	3%	3%	3%	3%	3%
	2+ adult 1+ children	19%	16%	14%	13%	12%	11%
	3+ person all adult	8%	8%	7%	6%	5%	5%
<b>All households</b>		<b>100%</b>	<b>100%</b>	<b>100%</b>	<b>100%</b>	<b>100%</b>	<b>100%</b>

1. Average annual change is the result of dividing the absolute change (before rounding) by the number of years referred to.

2. Private household population: The population living in private households, i.e. people not living in communal establishments.

3. Average household size is the result of dividing "private household population" by "all households"

Household figures are rounded to the nearest 10.

**Table 2: Household projections for Scotland, by age of the head of household, 2008-2033**

Age of head of household	Year						Change		Average annual change <sup>1</sup>		
	2008	2013	2018	2023	2028	2033	2008-2033	%	2008-2033	2008-2018	2018-2033
16-19	19,700	21,060	21,580	24,990	28,750	31,060	11,360	58%	454	188	632
20-24	97,110	101,760	99,370	95,560	105,120	112,520	15,410	16%	616	226	877
25-29	163,030	182,580	186,100	178,820	169,490	183,260	20,230	12%	809	2,307	-190
30-34	171,690	200,020	222,660	226,620	217,380	205,590	33,890	20%	1,356	5,097	-1,138
35-39	214,870	183,270	211,710	234,300	237,370	226,840	11,960	6%	478	-316	1,008
40-44	242,150	224,430	191,580	220,920	244,130	247,070	4,920	2%	197	-5,057	3,700
45-49	237,000	248,070	230,080	196,250	226,070	249,580	12,580	5%	503	-692	1,300
50-54	209,790	236,640	246,710	227,610	193,370	221,410	11,620	6%	465	3,692	-1,687
55-59	193,320	205,130	229,400	236,710	216,440	182,480	-10,840	-6%	-434	3,609	-3,128
60-64	188,250	186,890	196,870	217,720	222,170	200,930	12,680	7%	507	861	271
65-69	157,140	182,110	181,460	190,870	210,390	213,780	56,640	36%	2,266	2,431	2,155
70-74	147,830	151,960	178,840	180,130	191,080	212,020	64,190	43%	2,568	3,101	2,212
75-79	126,230	132,590	139,740	166,350	168,960	180,560	54,330	43%	2,173	1,351	2,721
80-84	90,070	99,040	110,130	119,670	145,160	149,500	59,430	66%	2,377	2,006	2,625
85-89	53,050	58,580	69,990	83,830	95,220	119,190	66,140	125%	2,646	1,694	3,280
90+	20,010	26,330	33,700	44,960	60,660	76,720	56,710	283%	2,268	1,369	2,868
<b>All households</b>	<b>2,331,250</b>	<b>2,440,440</b>	<b>2,549,930</b>	<b>2,645,300</b>	<b>2,731,760</b>	<b>2,812,520</b>	<b>481,270</b>	<b>21%</b>	<b>19,251</b>	<b>21,868</b>	<b>17,506</b>

Age of head of household	2008	2013	2018	2023	2028	2033
16-19	1%	1%	1%	1%	1%	1%
20-24	4%	4%	4%	4%	4%	4%
25-29	7%	7%	7%	7%	6%	7%
30-34	7%	8%	9%	9%	8%	7%
35-39	9%	8%	8%	9%	9%	8%
40-44	10%	9%	8%	8%	9%	9%
45-49	10%	10%	9%	7%	8%	9%
50-54	9%	10%	10%	9%	7%	8%
55-59	8%	8%	9%	9%	8%	6%
60-64	8%	8%	8%	8%	8%	7%
65-69	7%	7%	7%	7%	8%	8%
70-74	6%	6%	7%	7%	7%	8%
75-79	5%	5%	5%	6%	6%	6%
80-84	4%	4%	4%	5%	5%	5%
85-89	2%	2%	3%	3%	3%	4%
90+	1%	1%	1%	2%	2%	3%
<b>All households</b>	<b>100%</b>	<b>100%</b>	<b>100%</b>	<b>100%</b>	<b>100%</b>	<b>100%</b>

1. Average annual change is the result of dividing the absolute change (before rounding) by the number of years referred to.

Household figures are rounded to the nearest 10.

**Table 3: Projected number of households in Scotland, by household type and age group of the head of household, 2008-2033**

Household type	Age group	Year						Change		Average annual change <sup>1</sup>		
		2008	2013	2018	2023	2028	2033	2008-2033	%	2008-2033	2008-2018	2018-2033
<b>1 adult: male</b>	16-19	3,000	3,240	3,340	3,870	4,470	4,840	1,830	61%	73	33	100
	20-24	15,360	16,120	15,750	15,130	16,600	17,720	2,360	15%	95	39	132
	25-29	33,800	40,460	43,490	43,620	42,800	47,560	13,750	41%	550	969	271
	30-34	33,930	43,360	52,000	56,220	56,630	55,760	21,820	64%	873	1,807	250
	35-39	36,000	33,960	42,590	50,480	54,180	54,370	18,380	51%	735	659	785
	40-44	38,000	38,960	36,130	44,570	52,140	55,400	17,400	46%	696	-187	1,284
	45-49	36,350	41,790	41,890	38,110	46,220	53,300	16,950	47%	678	553	761
	50-54	31,810	39,230	44,140	43,490	39,110	46,910	15,100	47%	604	1,233	185
	55-59	28,610	33,030	39,730	43,700	42,270	37,460	8,850	31%	354	1,111	-151
	60-64	26,950	28,710	32,220	37,730	40,560	38,480	11,530	43%	461	528	417
	65-69	20,850	25,050	25,850	28,090	31,910	33,390	12,540	60%	502	500	503
	70-74	21,050	22,700	27,920	29,340	32,380	37,290	16,240	77%	650	688	624
	75-79	18,830	20,410	22,170	27,150	28,350	31,090	12,270	65%	491	335	595
	80-84	13,470	15,140	17,200	19,070	23,580	24,750	11,280	84%	451	372	504
85-89	8,810	10,140	12,590	15,600	18,290	23,560	14,750	168%	590	378	732	
90+	3,330	4,660	6,290	8,780	12,340	16,180	12,840	385%	514	296	659	
<b>All ages</b>		<b>370,160</b>	<b>416,960</b>	<b>463,300</b>	<b>504,940</b>	<b>541,820</b>	<b>578,060</b>	<b>207,900</b>	<b>56%</b>	<b>8,316</b>	<b>9,314</b>	<b>7,651</b>
<b>1 adult: female</b>	16-19	4,640	5,030	5,220	6,090	7,050	7,660	3,020	65%	121	59	162
	20-24	16,510	18,340	18,800	18,830	21,400	23,560	7,050	43%	282	228	317
	25-29	28,100	34,710	38,250	39,120	39,000	43,920	15,820	56%	633	1,015	378
	30-34	21,430	27,610	33,350	36,290	36,780	36,400	14,970	70%	599	1,193	203
	35-39	19,730	18,680	23,510	27,960	30,130	30,350	10,610	54%	425	377	456
	40-44	22,630	23,250	21,610	26,720	31,350	33,400	10,770	48%	431	-102	786
	45-49	26,370	30,130	30,070	27,270	33,010	38,020	11,660	44%	466	370	530
	50-54	28,550	34,320	37,830	36,650	32,500	38,550	10,000	35%	400	929	48
	55-59	32,060	35,220	40,610	43,060	40,340	34,750	2,700	8%	108	855	-390
	60-64	37,090	35,890	36,770	39,470	39,050	34,200	-2,890	-8%	-116	-32	-172
	65-69	40,460	45,220	43,430	43,940	46,540	45,400	4,940	12%	198	296	132
	70-74	49,140	48,420	54,520	52,520	53,220	56,340	7,200	15%	288	538	121
	75-79	52,910	53,840	54,930	63,210	62,060	64,040	11,130	21%	445	202	607
	80-84	46,180	49,900	54,490	58,130	69,190	69,920	23,740	51%	949	831	1,028
85-89	31,690	34,830	41,400	49,290	55,660	69,240	37,550	118%	1,502	971	1,856	
90+	13,140	17,340	22,200	29,590	39,810	50,180	37,040	282%	1,482	906	1,865	
<b>All ages</b>		<b>470,630</b>	<b>512,740</b>	<b>557,000</b>	<b>598,160</b>	<b>637,080</b>	<b>675,940</b>	<b>205,300</b>	<b>44%</b>	<b>8,212</b>	<b>8,637</b>	<b>7,929</b>
<b>1 adult, 1+ children</b>	16-19	3,120	3,120	3,030	3,350	3,700	3,870	750	24%	30	-9	56
	20-24	15,270	15,650	14,980	14,150	15,300	16,130	860	6%	34	-29	77
	25-29	24,930	28,630	29,720	28,950	27,710	30,160	5,230	21%	209	479	29
	30-34	28,220	34,570	40,090	42,220	41,690	40,400	12,180	43%	487	1,187	21
	35-39	34,520	32,410	40,360	47,620	51,020	51,200	16,680	48%	667	584	723
	40-44	29,580	30,950	29,230	36,420	43,020	46,160	16,580	56%	663	-35	1,129
	45+	27,240	33,090	36,630	37,560	42,970	49,950	22,710	83%	908	939	888
	<b>All ages</b>		<b>162,880</b>	<b>178,420</b>	<b>194,040</b>	<b>210,280</b>	<b>225,430</b>	<b>237,870</b>	<b>74,980</b>	<b>46%</b>	<b>2,999</b>	<b>3,116</b>
<b>2+ adults</b>	16-19	7,310	8,080	8,490	10,050	11,760	12,880	5,580	76%	223	119	293
	20-24	40,610	43,510	43,240	42,150	46,970	50,780	10,170	25%	407	263	503
	25-29	50,550	56,080	56,430	53,370	49,730	52,910	2,360	5%	94	588	-235
	30-34	35,020	41,670	47,160	48,560	46,940	44,610	9,600	27%	384	1,215	-170
	35-39	30,870	26,300	30,410	33,660	34,080	32,500	1,630	5%	65	-47	140
	40-44	41,000	34,820	27,500	29,650	30,890	29,660	-11,340	-28%	-454	-1,350	144
	45-49	74,390	70,380	59,310	46,210	48,960	49,970	-24,410	-33%	-977	-1,508	-622
	50-54	108,680	116,660	115,970	102,280	83,280	91,750	-16,930	-16%	-677	729	-1,615
	55-59	118,850	123,070	134,470	135,720	121,520	100,450	-18,400	-15%	-736	1,562	-2,268
	60-64	118,560	117,100	122,780	135,230	137,430	123,800	5,240	4%	209	422	68
	65-69	93,380	109,190	109,660	116,270	129,150	132,170	38,790	42%	1,552	1,628	1,501
	70-74	76,300	79,510	94,840	96,660	103,710	116,310	40,020	52%	1,601	1,854	1,432
	75-79	53,680	57,430	61,610	74,650	77,060	83,670	29,990	56%	1,200	794	1,470
	80-84	29,770	33,230	37,490	41,320	50,860	53,090	23,320	78%	933	772	1,040
85-89	12,220	13,180	15,430	18,150	20,270	25,000	12,780	105%	511	321	638	
90+	2,970	3,430	3,860	4,550	5,440	6,120	3,140	106%	126	89	150	
<b>All ages</b>		<b>894,150</b>	<b>933,630</b>	<b>968,640</b>	<b>988,480</b>	<b>998,040</b>	<b>1,005,680</b>	<b>111,520</b>	<b>12%</b>	<b>4,461</b>	<b>7,449</b>	<b>2,469</b>
<b>2+ adults, 1+ children</b>	16-19	1,640	1,590	1,500	1,620	1,760	1,810	170	10%	7	-13	20
	20-24	9,360	8,140	6,610	5,290	4,850	4,330	-5,030	-54%	-201	-275	-152
	25-29	25,650	22,700	18,220	13,760	10,250	8,720	-16,930	-66%	-677	-744	-633
	30-34	53,100	52,810	50,050	43,330	35,340	28,420	-24,680	-46%	-987	-305	-1,442
	35-39	93,750	71,920	74,850	74,570	67,970	58,410	-35,340	-38%	-1,413	-1,890	-1,096
	40-44	110,930	96,450	77,100	83,550	86,740	82,450	-28,480	-26%	-1,139	-3,383	356
	45-49	84,330	87,360	79,910	67,060	76,250	83,010	-1,320	-2%	-53	-442	207
	50-54	35,140	39,330	40,570	36,950	30,930	35,010	-130	0%	-5	543	-371
	55+	19,520	18,400	18,130	17,290	15,310	12,810	-6,710	-34%	-269	-140	-354
	<b>All ages</b>		<b>433,420</b>	<b>398,700</b>	<b>366,940</b>	<b>343,430</b>	<b>329,400</b>	<b>314,970</b>	<b>-118,450</b>	<b>-27%</b>	<b>-4,738</b>	<b>-6,648</b>
<b>All households</b>	<b>All ages</b>	<b>2,331,250</b>	<b>2,440,440</b>	<b>2,549,930</b>	<b>2,645,300</b>	<b>2,731,760</b>	<b>2,812,520</b>	<b>481,270</b>	<b>21%</b>	<b>19,251</b>	<b>21,868</b>	<b>17,506</b>

1. Average annual change is the result of dividing the absolute change (before rounding) by the number of years referred to. Household figures are rounded to the nearest 10.

**Table 4: Projected percentage of people living alone, by gender and age group, 2008-2033**

Age group	2008	2013	2018	2023	2028	2033
<b>Males</b>						
16-19	2%	3%	3%	3%	4%	4%
20-24	9%	9%	9%	10%	10%	11%
25-29	20%	22%	24%	26%	27%	29%
30-34	23%	25%	28%	31%	33%	35%
35-39	21%	23%	25%	27%	30%	32%
40-44	20%	22%	25%	26%	28%	30%
45-49	19%	22%	24%	26%	28%	29%
50-54	19%	21%	23%	26%	27%	28%
55-59	18%	20%	22%	24%	25%	26%
60-64	18%	19%	20%	22%	23%	24%
65-69	18%	18%	18%	19%	19%	20%
70-74	22%	22%	22%	23%	24%	25%
75-79	26%	25%	25%	25%	25%	26%
80-84	30%	29%	28%	28%	27%	27%
85-89	40%	38%	38%	37%	37%	37%
90+	44%	42%	40%	39%	39%	40%
<b>All ages</b>	<b>18%</b>	<b>20%</b>	<b>22%</b>	<b>23%</b>	<b>24%</b>	<b>26%</b>
<b>Females</b>						
16-19	4%	4%	5%	5%	6%	7%
20-24	9%	11%	12%	13%	14%	15%
25-29	17%	19%	22%	24%	26%	28%
30-34	14%	16%	19%	21%	22%	24%
35-39	10%	12%	14%	15%	17%	18%
40-44	11%	12%	14%	16%	17%	19%
45-49	13%	14%	16%	18%	19%	21%
50-54	16%	17%	18%	19%	21%	23%
55-59	19%	20%	20%	21%	22%	23%
60-64	23%	22%	21%	20%	19%	19%
65-69	31%	30%	28%	27%	25%	23%
70-74	42%	40%	39%	37%	34%	32%
75-79	53%	52%	51%	50%	47%	45%
80-84	62%	63%	63%	63%	63%	62%
85-89	67%	71%	74%	77%	79%	81%
90+	56%	60%	63%	67%	70%	72%
<b>All ages</b>	<b>21%</b>	<b>23%</b>	<b>25%</b>	<b>27%</b>	<b>29%</b>	<b>30%</b>
<b>Total</b>						
16-19	3%	3%	4%	4%	5%	5%
20-24	9%	10%	11%	11%	12%	13%
25-29	18%	21%	23%	25%	27%	28%
30-34	18%	21%	23%	26%	28%	30%
35-39	15%	17%	19%	21%	23%	25%
40-44	15%	17%	19%	21%	23%	25%
45-49	16%	18%	20%	22%	23%	25%
50-54	17%	19%	21%	22%	24%	25%
55-59	19%	20%	21%	22%	23%	24%
60-64	21%	21%	21%	21%	21%	21%
65-69	25%	24%	24%	23%	22%	22%
70-74	33%	32%	31%	30%	29%	29%
75-79	41%	40%	39%	38%	37%	36%
80-84	50%	49%	49%	48%	47%	47%
85-89	58%	59%	60%	61%	62%	62%
90+	53%	55%	56%	58%	59%	60%
<b>All ages</b>	<b>20%</b>	<b>22%</b>	<b>24%</b>	<b>26%</b>	<b>28%</b>	<b>29%</b>

These figures are equal to the number of people in the age group projected to live in a 'one adult' household, divided by the projected population of that age and gender (including those living in communal establishments)

**Table 5: Household projections for Scotland, by local authority area, 2008-2033: All households**

Local authority	2008	2013	2018	2023	2028	2033	Change		Average annual change <sup>1</sup>		
							2008 - 2033		2008-2033	2008-2018	2018-2033
<b>Scotland</b>	<b>2,331,250</b>	<b>2,440,440</b>	<b>2,549,930</b>	<b>2,645,300</b>	<b>2,731,760</b>	<b>2,812,520</b>	<b>481,270</b>	<b>21%</b>	<b>19,251</b>	<b>21,868</b>	<b>17,506</b>
Aberdeen City	102,900	108,150	112,200	115,460	118,810	122,070	19,170	19%	767	930	658
Aberdeenshire	101,520	108,410	116,070	123,660	130,610	137,170	35,650	35%	1,426	1,456	1,406
Angus	49,970	52,010	54,050	55,910	57,570	59,070	9,100	18%	364	407	335
Argyll & Bute	41,410	41,780	42,500	43,000	43,120	42,900	1,490	4%	59	109	27
Clackmannanshire	22,620	24,460	26,320	28,150	30,040	31,920	9,300	41%	372	369	374
Dumfries & Galloway	67,850	69,780	71,460	72,750	73,770	74,410	6,560	10%	262	361	197
Dundee City	68,380	70,770	71,430	71,630	72,070	72,290	3,900	6%	156	305	57
East Ayrshire	53,030	54,880	56,440	57,580	58,360	59,000	5,980	11%	239	342	171
East Dunbartonshire	42,830	43,420	43,910	44,080	43,920	43,350	520	1%	21	108	-37
East Lothian	41,930	45,030	48,440	51,970	55,370	58,800	16,860	40%	675	651	690
East Renfrewshire	35,640	36,190	36,730	37,160	37,420	37,670	2,030	6%	81	110	62
Edinburgh, City of	217,650	232,530	248,410	263,120	278,310	293,150	75,500	35%	3,020	3,076	2,983
Eilean Siar	11,820	12,170	12,590	12,940	13,220	13,400	1,590	13%	63	77	54
Falkirk	67,810	71,350	75,440	79,300	82,870	86,410	18,610	27%	744	763	732
Fife	159,470	167,720	176,380	184,070	191,150	197,860	38,390	24%	1,535	1,690	1,432
Glasgow City	281,190	295,010	307,930	317,700	326,020	334,100	52,910	19%	2,117	2,674	1,745
Highland	99,720	106,320	112,870	118,920	124,430	129,790	30,070	30%	1,203	1,315	1,128
Inverclyde	36,560	36,830	36,840	36,430	35,630	34,610	-1,950	-5%	-78	28	-149
Midlothian	34,210	35,940	37,100	38,130	38,910	39,560	5,350	16%	214	289	164
Moray	38,810	40,180	41,560	42,480	43,100	43,480	4,670	12%	187	274	128
North Ayrshire	61,500	63,360	64,910	66,000	66,610	66,810	5,300	9%	212	341	126
North Lanarkshire	143,440	148,890	154,830	159,860	164,090	168,230	24,800	17%	992	1,139	894
Orkney Islands	9,070	9,730	10,380	10,960	11,510	11,980	2,910	32%	116	131	107
Perth & Kinross	64,350	68,990	74,120	79,080	84,020	89,030	24,680	38%	987	976	995
Renfrewshire	78,750	80,480	81,740	82,470	82,690	82,790	4,040	5%	162	299	70
Scottish Borders	51,270	54,130	57,120	59,910	62,480	64,880	13,610	27%	544	585	517
Shetland Islands	9,590	10,100	10,560	10,900	11,090	11,140	1,560	16%	62	97	39
South Ayrshire	51,130	52,190	53,380	54,220	54,870	55,390	4,260	8%	170	224	134
South Lanarkshire	135,550	141,590	148,430	154,600	160,450	165,980	30,430	22%	1,217	1,288	1,170
Stirling	37,550	39,190	40,960	42,540	43,900	45,090	7,540	20%	302	341	276
West Dunbartonshire	41,450	42,090	42,710	43,060	43,190	43,060	1,610	4%	64	126	23
West Lothian	72,250	76,750	82,090	87,280	92,180	97,100	24,850	34%	994	985	1,000

1. Average annual change is the result of dividing the absolute change (before rounding) by the number of years referred to.

Household figures are rounded to the nearest 10.

**Table 6: Household projections by local authority area and household type, 2008 and 2033: Percentage of households of each type**

2008

Local authority	1 adult,		2+adults,		Total
	1 adult	1+ children	2+ adults	1+ children	
<b>Scotland</b>	<b>36%</b>	<b>7%</b>	<b>38%</b>	<b>19%</b>	<b>100%</b>
Aberdeen City	45%	7%	35%	14%	100%
Aberdeenshire	28%	4%	43%	24%	100%
Angus	34%	6%	42%	19%	100%
Argyll & Bute	35%	5%	42%	18%	100%
Clackmannanshire	35%	8%	37%	20%	100%
Dumfries & Galloway	33%	5%	44%	19%	100%
Dundee City	42%	9%	35%	14%	100%
East Ayrshire	32%	7%	40%	21%	100%
East Dunbartonshire	29%	5%	42%	24%	100%
East Lothian	32%	6%	40%	22%	100%
East Renfrewshire	28%	5%	40%	26%	100%
Edinburgh, City of	40%	6%	39%	15%	100%
Eilean Siar	36%	5%	41%	18%	100%
Falkirk	35%	7%	38%	20%	100%
Fife	34%	7%	39%	19%	100%
Glasgow City	45%	10%	31%	14%	100%
Highland	34%	6%	41%	19%	100%
Inverclyde	39%	8%	35%	18%	100%
Midlothian	29%	8%	42%	21%	100%
Moray	31%	3%	44%	22%	100%
North Ayrshire	35%	9%	39%	18%	100%
North Lanarkshire	33%	9%	38%	20%	100%
Orkney Islands	35%	4%	41%	20%	100%
Perth & Kinross	34%	5%	42%	19%	100%
Renfrewshire	37%	7%	37%	19%	100%
Scottish Borders	34%	5%	42%	19%	100%
Shetland Islands	34%	5%	40%	20%	100%
South Ayrshire	34%	6%	42%	18%	100%
South Lanarkshire	34%	7%	39%	20%	100%
Stirling	31%	5%	43%	20%	100%
West Dunbartonshire	38%	9%	35%	18%	100%
West Lothian	31%	8%	39%	23%	100%

2033

Local authority	1 adult,		2+adults,		Total
	1 adult	1+ children	2+ adults	1+ children	
<b>Scotland</b>	<b>45%</b>	<b>8%</b>	<b>36%</b>	<b>11%</b>	<b>100%</b>
Aberdeen City	51%	7%	33%	9%	100%
Aberdeenshire	37%	6%	42%	15%	100%
Angus	42%	8%	39%	11%	100%
Argyll & Bute	43%	7%	40%	10%	100%
Clackmannanshire	45%	11%	33%	11%	100%
Dumfries & Galloway	42%	7%	41%	11%	100%
Dundee City	49%	9%	33%	10%	100%
East Ayrshire	40%	8%	39%	13%	100%
East Dunbartonshire	38%	7%	41%	15%	100%
East Lothian	40%	10%	35%	16%	100%
East Renfrewshire	38%	7%	37%	18%	100%
Edinburgh, City of	45%	6%	37%	11%	100%
Eilean Siar	45%	5%	41%	8%	100%
Falkirk	44%	9%	35%	12%	100%
Fife	43%	9%	36%	12%	100%
Glasgow City	54%	11%	26%	8%	100%
Highland	43%	7%	39%	10%	100%
Inverclyde	50%	8%	32%	10%	100%
Midlothian	38%	11%	38%	14%	100%
Moray	40%	2%	44%	14%	100%
North Ayrshire	44%	10%	36%	9%	100%
North Lanarkshire	44%	11%	35%	10%	100%
Orkney Islands	44%	4%	40%	12%	100%
Perth & Kinross	43%	7%	37%	13%	100%
Renfrewshire	47%	9%	34%	11%	100%
Scottish Borders	40%	6%	43%	11%	100%
Shetland Islands	45%	5%	40%	10%	100%
South Ayrshire	42%	8%	39%	10%	100%
South Lanarkshire	43%	10%	35%	12%	100%
Stirling	38%	7%	42%	13%	100%
West Dunbartonshire	48%	10%	31%	10%	100%
West Lothian	41%	10%	35%	13%	100%

**Table 7: Household projections for Scotland, by local authority area, 2008-2033: One adult households**

Local authority	2008	2013	2018	2023	2028	2033	Change		Average annual change <sup>1</sup>		
							2008 - 2033		2008-2033	2008-2018	2018-2033
<b>Scotland</b>	<b>840,790</b>	<b>929,700</b>	<b>1,020,300</b>	<b>1,103,110</b>	<b>1,178,890</b>	<b>1,254,000</b>	<b>413,210</b>	<b>49%</b>	<b>16,528</b>	<b>17,951</b>	<b>15,580</b>
Aberdeen City	45,840	50,090	53,610	56,560	59,490	62,650	16,800	37%	672	777	602
Aberdeenshire	28,330	32,170	36,620	41,430	46,240	51,030	22,700	80%	908	829	961
Angus	16,740	18,410	20,130	21,710	23,250	24,700	7,950	48%	318	339	305
Argyll & Bute	14,630	15,540	16,540	17,370	17,990	18,550	3,920	27%	157	191	134
Clackmannanshire	7,870	9,080	10,340	11,610	12,910	14,230	6,360	81%	254	247	259
Dumfries & Galloway	22,260	24,290	26,220	27,940	29,490	30,930	8,670	39%	347	396	314
Dundee City	28,470	30,670	32,060	33,120	34,050	35,080	6,600	23%	264	359	201
East Ayrshire	16,770	18,300	19,830	21,210	22,370	23,540	6,770	40%	271	305	248
East Dunbartonshire	12,230	13,360	14,510	15,470	16,110	16,510	4,270	35%	171	227	133
East Lothian	13,340	15,100	17,210	19,290	21,180	23,270	9,920	74%	397	387	404
East Renfrewshire	10,150	11,020	11,950	12,790	13,520	14,160	4,010	40%	161	180	147
Edinburgh, City of	87,740	96,660	106,220	115,350	124,260	133,110	45,370	52%	1,815	1,848	1,793
Eilean Siar	4,310	4,670	5,070	5,440	5,780	6,060	1,760	41%	70	76	66
Falkirk	23,400	26,190	29,360	32,420	35,250	38,050	14,650	63%	586	596	579
Fife	54,300	60,590	67,130	73,170	78,860	84,640	30,330	56%	1,213	1,282	1,167
Glasgow City	126,640	139,260	151,640	162,170	171,450	180,960	54,320	43%	2,173	2,500	1,955
Highland	34,280	38,780	43,440	47,910	52,110	56,330	22,050	64%	882	916	859
Inverclyde	14,140	15,190	16,070	16,660	17,010	17,240	3,100	22%	124	193	78
Midlothian	9,980	11,260	12,370	13,420	14,250	15,060	5,090	51%	203	240	179
Moray	12,110	13,340	14,660	15,710	16,550	17,320	5,210	43%	208	255	177
North Ayrshire	21,530	23,640	25,640	27,280	28,510	29,620	8,090	38%	324	411	265
North Lanarkshire	47,880	53,600	59,620	65,190	70,070	74,790	26,910	56%	1,077	1,174	1,012
Orkney Islands	3,200	3,620	4,070	4,500	4,920	5,290	2,100	66%	84	87	82
Perth & Kinross	22,160	25,030	28,200	31,300	34,570	37,960	15,800	71%	632	604	651
Renfrewshire	29,060	31,700	34,020	35,940	37,310	38,630	9,570	33%	383	496	307
Scottish Borders	17,390	19,040	20,860	22,620	24,270	25,900	8,510	49%	340	347	336
Shetland Islands	3,310	3,730	4,160	4,520	4,810	5,040	1,740	53%	69	85	59
South Ayrshire	17,510	18,930	20,360	21,520	22,510	23,510	6,000	34%	240	285	210
South Lanarkshire	45,530	50,910	56,590	61,860	66,950	71,950	26,420	58%	1,057	1,106	1,024
Stirling	11,730	12,870	14,120	15,320	16,320	17,240	5,510	47%	220	239	208
West Dunbartonshire	15,840	17,120	18,310	19,280	20,170	20,830	5,000	32%	200	247	169
West Lothian	22,120	25,510	29,380	33,040	36,380	39,810	17,690	80%	708	727	695

1. Average annual change is the result of dividing the absolute change (before rounding) by the number of years referred to.

Household figures are rounded to the nearest 10.

**Table 8: Household projections for Scotland, by local authority area, 2008-2033: Households with one adult and one or more children**

Local authority	2008	2013	2018	2023	2028	2033	Change		Average annual change <sup>1</sup>		
							2008 - 2033		2008-2033	2008-2018	2018-2033
<b>Scotland</b>	<b>162,880</b>	<b>178,420</b>	<b>194,040</b>	<b>210,280</b>	<b>225,430</b>	<b>237,870</b>	<b>74,980</b>	<b>46%</b>	<b>2,999</b>	<b>3,116</b>	<b>2,922</b>
Aberdeen City	7,460	7,970	8,480	8,900	9,080	9,030	1,570	21%	63	103	36
Aberdeenshire	4,520	5,140	5,770	6,500	7,350	8,210	3,690	82%	148	125	163
Angus	2,910	3,170	3,470	3,850	4,250	4,600	1,690	58%	68	56	75
Argyll & Bute	2,170	2,300	2,480	2,690	2,910	3,040	870	40%	35	31	37
Clackmannanshire	1,900	2,200	2,490	2,800	3,140	3,490	1,590	84%	64	59	66
Dumfries & Galloway	3,490	3,740	4,010	4,350	4,720	5,020	1,530	44%	61	52	68
Dundee City	5,870	6,360	6,710	6,920	6,840	6,650	770	13%	31	83	-4
East Ayrshire	3,550	3,840	4,080	4,330	4,600	4,810	1,260	36%	50	52	49
East Dunbartonshire	2,140	2,300	2,470	2,680	2,850	2,900	770	36%	31	33	29
East Lothian	2,650	3,160	3,680	4,300	5,000	5,730	3,090	117%	124	104	137
East Renfrewshire	1,800	1,930	2,100	2,360	2,620	2,800	1,000	55%	40	30	46
Edinburgh, City of	12,460	13,630	15,140	16,590	17,600	18,210	5,750	46%	230	268	205
Eilean Siar	530	570	600	630	670	710	180	33%	7	7	7
Falkirk	4,990	5,520	6,080	6,720	7,420	8,160	3,170	64%	127	110	138
Fife	11,360	12,630	13,930	15,360	16,860	18,210	6,850	60%	274	257	285
Glasgow City	28,730	31,690	34,330	36,310	37,280	37,580	8,850	31%	354	560	216
Highland	5,560	6,150	6,750	7,430	8,180	8,900	3,340	60%	134	119	143
Inverclyde	2,910	2,980	3,030	3,060	3,040	2,940	30	1%	1	11	-6
Midlothian	2,570	2,910	3,190	3,550	3,950	4,260	1,690	66%	68	62	72
Moray	1,110	1,140	1,140	1,090	1,060	1,050	-60	-5%	-2	3	-6
North Ayrshire	5,240	5,670	6,060	6,440	6,770	7,010	1,760	34%	71	81	63
North Lanarkshire	12,310	13,400	14,450	15,590	16,810	17,940	5,630	46%	225	214	232
Orkney Islands	340	360	390	420	440	460	130	37%	5	5	5
Perth & Kinross	3,410	3,950	4,540	5,190	5,870	6,520	3,110	91%	124	113	132
Renfrewshire	5,800	6,090	6,310	6,650	6,980	7,210	1,410	24%	56	51	60
Scottish Borders	2,420	2,690	2,920	3,180	3,520	3,890	1,470	60%	59	50	64
Shetland Islands	510	550	580	600	620	600	90	18%	4	7	1
South Ayrshire	2,940	3,160	3,410	3,720	4,050	4,340	1,400	48%	56	47	62
South Lanarkshire	10,040	11,110	12,330	13,670	15,030	16,270	6,240	62%	250	230	263
Stirling	2,030	2,160	2,330	2,580	2,910	3,200	1,170	57%	47	29	58
West Dunbartonshire	3,710	3,880	4,010	4,150	4,280	4,340	630	17%	25	30	22
West Lothian	5,450	6,070	6,770	7,670	8,740	9,770	4,320	79%	173	132	200

1. Average annual change is the result of dividing the absolute change (before rounding) by the number of years referred to.

Household figures are rounded to the nearest 10.

**Table 9: Household projections for Scotland, by local authority area, 2008-2033: Households with two or more adults and no children**

Local authority	2008	2013	2018	2023	2028	2033	Change		Average annual change <sup>1</sup>		
							2008 - 2033		2008-2033	2008-2018	2018-2033
<b>Scotland</b>	<b>894,150</b>	<b>933,630</b>	<b>968,640</b>	<b>988,480</b>	<b>998,040</b>	<b>1,005,680</b>	<b>111,520</b>	<b>12%</b>	<b>4,461</b>	<b>7,449</b>	<b>2,469</b>
Aberdeen City	35,550	36,780	37,400	37,810	38,610	39,880	4,320	12%	173	185	165
Aberdeenshire	44,010	47,890	51,930	55,020	56,620	57,360	13,350	30%	534	792	362
Angus	20,800	21,790	22,680	23,250	23,300	23,190	2,390	11%	96	188	34
Argyll & Bute	17,230	17,700	18,150	18,210	17,820	17,160	-60	0%	-3	93	-66
Clackmannanshire	8,430	8,970	9,500	9,960	10,340	10,660	2,230	26%	89	107	77
Dumfries & Galloway	29,550	30,610	31,350	31,470	31,050	30,300	760	3%	30	180	-70
Dundee City	24,190	24,580	24,170	23,480	23,460	23,650	-540	-2%	-22	-2	-35
East Ayrshire	21,330	22,200	23,000	23,360	23,210	22,790	1,450	7%	58	167	-14
East Dunbartonshire	18,200	18,800	19,210	19,080	18,440	17,580	-610	-3%	-25	101	-108
East Lothian	16,760	17,890	19,060	20,010	20,440	20,590	3,830	23%	153	230	102
East Renfrewshire	14,280	14,800	15,220	15,180	14,550	13,820	-460	-3%	-18	94	-93
Edinburgh, City of	84,550	89,410	93,760	97,450	102,690	109,680	25,130	30%	1,005	921	1,061
Eilean Siar	4,790	5,040	5,290	5,470	5,540	5,530	740	15%	29	50	16
Falkirk	25,680	26,800	28,100	29,020	29,600	30,090	4,410	17%	176	242	133
Fife	62,940	66,060	68,990	70,710	71,490	72,070	9,120	14%	365	605	205
Glasgow City	85,870	86,560	86,500	85,690	85,920	87,330	1,450	2%	58	63	55
Highland	40,850	43,890	46,700	48,720	50,040	51,050	10,200	25%	408	585	290
Inverclyde	12,920	13,010	12,940	12,540	11,870	11,120	-1,810	-14%	-72	2	-122
Midlothian	14,330	14,980	15,420	15,480	15,220	14,860	530	4%	21	109	-38
Moray	16,950	17,900	18,760	19,180	19,160	18,920	1,970	12%	79	181	10
North Ayrshire	23,840	24,550	25,030	25,130	24,870	24,290	450	2%	18	119	-49
North Lanarkshire	54,080	56,030	57,890	58,650	58,510	58,370	4,290	8%	172	380	33
Orkney Islands	3,720	4,050	4,340	4,540	4,690	4,800	1,080	29%	43	62	31
Perth & Kinross	26,730	28,570	30,350	31,660	32,520	33,370	6,630	25%	265	362	201
Renfrewshire	28,850	29,290	29,680	29,460	28,790	28,020	-830	-3%	-33	83	-111
Scottish Borders	21,720	23,410	25,100	26,440	27,250	27,710	5,990	28%	240	338	174
Shetland Islands	3,820	4,070	4,290	4,440	4,480	4,430	610	16%	24	47	9
South Ayrshire	21,380	21,970	22,440	22,530	22,250	21,770	380	2%	15	106	-45
South Lanarkshire	52,240	54,430	56,650	58,000	58,360	58,440	6,190	12%	248	441	119
Stirling	16,130	17,300	18,360	18,930	19,040	18,930	2,800	17%	112	223	38
West Dunbartonshire	14,480	14,570	14,670	14,500	14,020	13,510	-970	-7%	-39	19	-77
West Lothian	27,940	29,730	31,700	33,110	33,900	34,430	6,490	23%	259	376	182

1. Average annual change is the result of dividing the absolute change (before rounding) by the number of years referred to.

Household figures are rounded to the nearest 10.

**Table 10: Household projections for Scotland, by local authority area, 2008-2033: Households with two or more adults and one or more children**

Local authority	2008	2013	2018	2023	2028	2033	Change		Average annual change <sup>1</sup>		
							2008 - 2033		2008-2033	2008-2018	2018-2033
<b>Scotland</b>	<b>433,420</b>	<b>398,700</b>	<b>366,940</b>	<b>343,430</b>	<b>329,400</b>	<b>314,970</b>	<b>-118,450</b>	<b>-27%</b>	<b>-4,738</b>	<b>-6,648</b>	<b>-3,465</b>
Aberdeen City	14,050	13,320	12,700	12,190	11,640	10,520	-3,530	-25%	-141	-134	-146
Aberdeenshire	24,660	23,210	21,750	20,700	20,410	20,570	-4,090	-17%	-164	-291	-79
Angus	9,520	8,630	7,770	7,100	6,760	6,590	-2,940	-31%	-118	-176	-79
Argyll & Bute	7,390	6,250	5,320	4,730	4,410	4,150	-3,240	-44%	-130	-206	-79
Clackmannanshire	4,420	4,200	3,980	3,780	3,650	3,540	-880	-20%	-35	-44	-29
Dumfries & Galloway	12,550	11,140	9,880	8,980	8,500	8,150	-4,400	-35%	-176	-268	-115
Dundee City	9,840	9,160	8,490	8,110	7,720	6,910	-2,930	-30%	-117	-135	-105
East Ayrshire	11,370	10,540	9,540	8,670	8,180	7,860	-3,510	-31%	-140	-183	-112
East Dunbartonshire	10,260	8,950	7,730	6,850	6,520	6,360	-3,910	-38%	-156	-254	-91
East Lothian	9,190	8,890	8,490	8,370	8,740	9,200	20	0%	1	-70	48
East Renfrewshire	9,400	8,440	7,450	6,820	6,730	6,880	-2,520	-27%	-101	-195	-38
Edinburgh, City of	32,900	32,810	33,290	33,730	33,760	32,150	-750	-2%	-30	39	-76
Eilean Siar	2,180	1,900	1,630	1,400	1,230	1,100	-1,080	-50%	-43	-56	-35
Falkirk	13,740	12,830	11,900	11,140	10,590	10,120	-3,620	-26%	-145	-184	-119
Fife	30,870	28,440	26,330	24,840	23,950	22,950	-7,920	-26%	-317	-454	-225
Glasgow City	39,940	37,510	35,450	33,540	31,370	28,230	-11,710	-29%	-468	-449	-481
Highland	19,030	17,500	15,980	14,850	14,100	13,510	-5,520	-29%	-221	-305	-165
Inverclyde	6,590	5,650	4,800	4,170	3,710	3,310	-3,270	-50%	-131	-178	-99
Midlothian	7,330	6,790	6,120	5,670	5,490	5,380	-1,950	-27%	-78	-121	-49
Moray	8,650	7,810	7,000	6,510	6,330	6,190	-2,460	-28%	-98	-165	-54
North Ayrshire	10,890	9,510	8,190	7,150	6,460	5,890	-5,010	-46%	-200	-271	-153
North Lanarkshire	29,170	25,860	22,870	20,420	18,700	17,130	-12,040	-41%	-482	-630	-383
Orkney Islands	1,820	1,700	1,580	1,490	1,450	1,430	-400	-22%	-16	-24	-11
Perth & Kinross	12,050	11,440	11,030	10,930	11,070	11,200	-860	-7%	-34	-102	11
Renfrewshire	15,050	13,390	11,730	10,430	9,600	8,940	-6,110	-41%	-244	-331	-187
Scottish Borders	9,730	8,990	8,240	7,680	7,450	7,380	-2,350	-24%	-94	-149	-57
Shetland Islands	1,950	1,750	1,530	1,340	1,190	1,070	-880	-45%	-35	-42	-31
South Ayrshire	9,300	8,130	7,170	6,460	6,060	5,780	-3,520	-38%	-141	-213	-93
South Lanarkshire	27,740	25,140	22,850	21,070	20,100	19,310	-8,430	-30%	-337	-488	-236
Stirling	7,660	6,860	6,160	5,710	5,620	5,720	-1,940	-25%	-77	-151	-29
West Dunbartonshire	7,420	6,530	5,730	5,120	4,730	4,370	-3,050	-41%	-122	-169	-91
West Lothian	16,740	15,440	14,240	13,470	13,160	13,090	-3,650	-22%	-146	-250	-77

1. Average annual change is the result of dividing the absolute change (before rounding) by the number of years referred to.

Household figures are rounded to the nearest 10.

**Table 11: Household projections for Scotland, by local authority area and age group, 2008 and 2033: Percentage of households headed by someone in each age group**

2008							2033						
Local authority	16-29	30-44	45-59	60-74	75+	Total	Local authority	16-29	30-44	45-59	60-74	75+	Total
<b>Scotland</b>	<b>12%</b>	<b>27%</b>	<b>27%</b>	<b>21%</b>	<b>12%</b>	<b>100%</b>	<b>Scotland</b>	<b>12%</b>	<b>24%</b>	<b>23%</b>	<b>22%</b>	<b>19%</b>	<b>100%</b>
Aberdeen City	18%	28%	25%	17%	11%	100%	Aberdeen City	17%	24%	26%	18%	15%	100%
Aberdeenshire	7%	27%	31%	22%	13%	100%	Aberdeenshire	7%	23%	22%	24%	24%	100%
Angus	9%	24%	28%	24%	15%	100%	Angus	10%	21%	20%	25%	24%	100%
Argyll & Bute	7%	22%	29%	27%	15%	100%	Argyll & Bute	6%	21%	19%	26%	27%	100%
Clackmannanshire	12%	27%	27%	22%	11%	100%	Clackmannanshire	14%	24%	22%	22%	17%	100%
Dumfries & Galloway	8%	22%	28%	27%	16%	100%	Dumfries & Galloway	8%	19%	19%	26%	28%	100%
Dundee City	17%	24%	25%	20%	14%	100%	Dundee City	16%	22%	24%	20%	18%	100%
East Ayrshire	10%	26%	28%	23%	13%	100%	East Ayrshire	9%	22%	22%	25%	22%	100%
East Dunbartonshire	6%	23%	32%	25%	15%	100%	East Dunbartonshire	5%	22%	20%	25%	27%	100%
East Lothian	7%	27%	29%	23%	14%	100%	East Lothian	9%	27%	21%	23%	19%	100%
East Renfrewshire	5%	24%	32%	23%	15%	100%	East Renfrewshire	5%	23%	21%	25%	26%	100%
Edinburgh, City of	19%	29%	24%	16%	12%	100%	Edinburgh, City of	16%	26%	27%	17%	13%	100%
Eilean Siar	6%	23%	29%	27%	16%	100%	Eilean Siar	6%	18%	22%	29%	25%	100%
Falkirk	11%	29%	27%	21%	12%	100%	Falkirk	12%	25%	23%	22%	18%	100%
Fife	12%	26%	27%	22%	13%	100%	Fife	12%	23%	22%	23%	20%	100%
Glasgow City	18%	30%	25%	16%	10%	100%	Glasgow City	15%	28%	28%	19%	10%	100%
Highland	8%	25%	30%	24%	13%	100%	Highland	8%	21%	23%	25%	23%	100%
Inverclyde	10%	25%	29%	22%	13%	100%	Inverclyde	10%	21%	22%	26%	22%	100%
Midlothian	9%	27%	29%	23%	12%	100%	Midlothian	10%	25%	20%	24%	21%	100%
Moray	9%	25%	28%	24%	14%	100%	Moray	8%	21%	20%	27%	24%	100%
North Ayrshire	10%	25%	28%	24%	13%	100%	North Ayrshire	10%	22%	20%	26%	22%	100%
North Lanarkshire	11%	29%	28%	21%	11%	100%	North Lanarkshire	11%	25%	23%	24%	17%	100%
Orkney Islands	9%	23%	29%	25%	14%	100%	Orkney Islands	9%	18%	21%	25%	26%	100%
Perth & Kinross	10%	23%	28%	24%	15%	100%	Perth & Kinross	11%	24%	22%	22%	21%	100%
Renfrewshire	11%	27%	28%	21%	12%	100%	Renfrewshire	12%	25%	22%	23%	19%	100%
Scottish Borders	8%	24%	29%	24%	15%	100%	Scottish Borders	9%	22%	22%	24%	23%	100%
Shetland Islands	9%	27%	29%	23%	13%	100%	Shetland Islands	7%	18%	21%	27%	26%	100%
South Ayrshire	8%	23%	28%	25%	16%	100%	South Ayrshire	10%	22%	20%	24%	25%	100%
South Lanarkshire	10%	28%	29%	22%	12%	100%	South Lanarkshire	10%	25%	23%	23%	19%	100%
Stirling	10%	26%	28%	23%	13%	100%	Stirling	13%	26%	19%	22%	20%	100%
West Dunbartonshire	11%	27%	28%	21%	12%	100%	West Dunbartonshire	11%	25%	22%	24%	17%	100%
West Lothian	11%	31%	28%	20%	9%	100%	West Lothian	12%	27%	21%	23%	17%	100%

**Table 12: Household projections for Scotland, by local authority area and age group, 2008-2033: Households headed by someone aged 16-29**

Local authority	2008	2013	2018	2023	2028	2033	Change		Average annual change <sup>1</sup>		
							2008 - 2033		2008-2033	2008-2018	2018-2033
<b>Scotland</b>	<b>279,850</b>	<b>305,400</b>	<b>307,060</b>	<b>299,360</b>	<b>303,360</b>	<b>326,850</b>	<b>47,000</b>	<b>17%</b>	<b>1,880</b>	<b>2,721</b>	<b>1,319</b>
Aberdeen City	19,020	19,330	18,070	17,900	19,160	21,100	2,080	11%	83	-95	202
Aberdeenshire	7,230	8,650	9,590	9,400	9,160	9,590	2,360	33%	94	236	0
Angus	4,320	4,970	5,420	5,420	5,380	5,680	1,360	32%	55	110	18
Argyll & Bute	2,910	3,440	3,700	3,320	2,860	2,730	-180	-6%	-7	79	-65
Clackmannanshire	2,790	3,310	3,600	3,730	4,040	4,560	1,770	63%	71	81	64
Dumfries & Galloway	5,280	6,260	6,560	6,130	5,700	6,110	830	16%	33	128	-30
Dundee City	11,620	12,030	10,640	10,070	10,560	11,740	130	1%	5	-98	74
East Ayrshire	5,230	5,910	5,870	5,280	5,130	5,450	220	4%	9	64	-28
East Dunbartonshire	2,450	2,820	2,960	2,710	2,330	2,180	-280	-11%	-11	51	-52
East Lothian	3,080	4,330	5,290	5,200	5,080	5,490	2,400	78%	96	221	13
East Renfrewshire	1,910	2,290	2,410	2,320	2,030	1,920	10	0%	0	50	-33
Edinburgh, City of	41,610	41,460	40,140	40,520	42,840	46,780	5,170	12%	207	-147	443
Eilean Siar	700	750	800	780	760	770	70	10%	3	9	-2
Falkirk	7,660	8,250	9,030	9,030	9,440	10,310	2,650	35%	106	137	86
Fife	18,390	21,240	21,480	21,000	21,560	23,420	5,030	27%	201	309	129
Glasgow City	50,240	51,010	47,030	44,660	45,930	50,200	-40	0%	-2	-322	212
Highland	8,460	9,640	10,320	10,130	10,150	10,940	2,480	29%	99	186	41
Inverclyde	3,750	4,060	3,810	3,420	3,150	3,300	-450	-12%	-18	5	-34
Midlothian	2,990	3,660	3,880	3,740	3,690	3,850	860	29%	34	88	-2
Moray	3,320	4,000	4,290	3,860	3,500	3,580	250	8%	10	97	-48
North Ayrshire	6,100	6,790	6,860	6,340	6,030	6,380	290	5%	11	76	-32
North Lanarkshire	15,580	16,800	17,250	17,270	17,650	19,010	3,430	22%	137	167	117
Orkney Islands	810	930	1,000	950	940	1,030	220	27%	9	19	2
Perth & Kinross	6,410	8,100	8,640	8,870	8,900	9,400	2,990	47%	120	223	51
Renfrewshire	8,710	9,510	9,470	9,010	8,890	9,530	820	9%	33	76	4
Scottish Borders	4,120	5,150	5,790	5,710	5,780	6,110	1,980	48%	79	167	21
Shetland Islands	860	920	940	810	740	730	-130	-15%	-5	8	-14
South Ayrshire	4,340	5,120	5,280	4,990	4,930	5,280	930	21%	37	94	0
South Lanarkshire	13,350	15,000	15,760	15,710	15,880	17,130	3,780	28%	151	241	91
Stirling	3,900	5,120	5,780	5,880	5,850	6,010	2,110	54%	84	189	15
West Dunbartonshire	4,720	5,260	5,060	4,620	4,510	4,940	220	5%	9	35	-8
West Lothian	7,970	9,300	10,340	10,610	10,830	11,600	3,630	46%	145	237	84

1. Average annual change is the result of dividing the absolute change (before rounding) by the number of years referred to.

Household figures are rounded to the nearest 10.

**Table 13: Household projections for Scotland, by local authority area and age group, 2008-2033: Households headed by someone aged 30-44**

Local authority	2008	2013	2018	2023	2028	2033	Change		Average annual change <sup>1</sup>		
							2008 - 2033		2008-2033	2008-2018	2018-2033
<b>Scotland</b>	<b>628,720</b>	<b>607,720</b>	<b>625,950</b>	<b>681,840</b>	<b>698,880</b>	<b>679,500</b>	<b>50,780</b>	<b>8%</b>	<b>2,031</b>	<b>-277</b>	<b>3,570</b>
Aberdeen City	29,310	31,430	33,820	34,960	32,550	29,800	480	2%	19	451	-268
Aberdeenshire	27,340	24,890	24,240	27,070	29,900	30,960	3,610	13%	144	-311	448
Angus	12,120	10,890	10,330	11,220	12,230	12,560	440	4%	17	-179	149
Argyll & Bute	9,180	7,610	7,140	8,190	9,240	9,180	10	0%	0	-204	137
Clackmannanshire	6,190	6,060	6,330	7,020	7,600	7,810	1,620	26%	65	14	99
Dumfries & Galloway	14,920	12,800	12,120	13,340	14,500	14,060	-860	-6%	-34	-280	129
Dundee City	16,310	17,020	18,710	20,110	18,560	15,750	-560	-3%	-23	240	-197
East Ayrshire	13,940	12,560	12,180	13,370	13,850	13,220	-730	-5%	-29	-177	69
East Dunbartonshire	10,000	8,720	8,600	9,750	10,140	9,560	-440	-4%	-18	-140	64
East Lothian	11,360	10,300	10,170	12,370	14,810	16,060	4,710	41%	188	-119	393
East Renfrewshire	8,610	7,170	6,960	7,980	8,800	8,700	90	1%	4	-166	116
Edinburgh, City of	63,100	70,530	78,780	83,360	79,590	75,640	12,540	20%	502	1,568	-210
Eilean Siar	2,700	2,430	2,260	2,310	2,420	2,400	-300	-11%	-12	-44	9
Falkirk	19,670	18,960	18,720	20,180	21,070	21,720	2,050	10%	82	-95	200
Fife	41,750	39,040	40,120	44,620	47,140	46,090	4,340	10%	173	-163	398
Glasgow City	85,690	92,200	101,370	107,300	101,470	92,150	6,460	8%	258	1,568	-615
Highland	24,600	23,040	23,180	25,460	27,210	27,730	3,130	13%	125	-142	303
Inverclyde	9,220	8,090	7,980	8,440	8,290	7,240	-1,990	-22%	-79	-124	-49
Midlothian	9,160	8,480	8,340	9,320	10,060	10,090	920	10%	37	-82	116
Moray	9,660	8,300	7,520	8,200	9,040	8,930	-720	-8%	-29	-214	94
North Ayrshire	15,600	14,010	13,660	14,830	15,410	14,740	-860	-6%	-34	-194	72
North Lanarkshire	41,840	39,340	38,870	41,560	42,710	42,330	490	1%	20	-297	231
Orkney Islands	2,110	1,870	1,880	2,090	2,230	2,170	60	3%	2	-23	20
Perth & Kinross	15,100	14,280	15,730	18,550	20,910	21,410	6,310	42%	252	63	378
Renfrewshire	21,650	19,620	19,340	21,010	21,270	20,280	-1,370	-6%	-55	-231	63
Scottish Borders	12,480	11,120	10,640	12,010	13,340	13,990	1,510	12%	61	-183	223
Shetland Islands	2,570	2,350	2,170	2,210	2,180	2,040	-520	-20%	-21	-40	-8
South Ayrshire	11,660	10,300	10,320	11,650	12,380	12,000	340	3%	14	-134	112
South Lanarkshire	37,370	35,230	35,740	39,660	42,060	42,200	4,830	13%	193	-163	430
Stirling	9,600	8,260	8,120	9,710	11,190	11,570	1,960	20%	78	-148	230
West Dunbartonshire	11,230	10,200	10,450	11,480	11,670	10,670	-560	-5%	-22	-78	15
West Lothian	22,650	20,620	20,150	22,480	25,040	26,450	3,800	17%	152	-250	420

1. Average annual change is the result of dividing the absolute change (before rounding) by the number of years referred to.

Household figures are rounded to the nearest 10.

**Table 14: Household projections for Scotland, by local authority area and age group, 2008-2033: Households headed by someone aged 45-59**

Local authority	2008	2013	2018	2023	2028	2033	Change		Average annual change <sup>1</sup>		
							2008 - 2033		2008-2033	2008-2018	2018-2033
<b>Scotland</b>	<b>640,110</b>	<b>689,840</b>	<b>706,190</b>	<b>660,570</b>	<b>635,880</b>	<b>653,470</b>	<b>13,360</b>	<b>2%</b>	<b>535</b>	<b>6,608</b>	<b>-3,515</b>
Aberdeen City	25,870	27,350	27,970	27,490	29,590	31,830	5,960	23%	239	210	258
Aberdeenshire	31,330	33,890	35,060	33,260	30,730	30,430	-900	-3%	-36	373	-309
Angus	14,030	14,760	15,140	13,820	12,470	12,000	-2,030	-14%	-81	110	-209
Argyll & Bute	11,910	12,170	11,790	10,180	8,550	8,100	-3,810	-32%	-152	-12	-246
Clackmannanshire	6,190	6,820	7,280	7,170	6,960	7,170	980	16%	39	109	-7
Dumfries & Galloway	18,870	19,490	19,150	16,780	14,550	14,090	-4,780	-25%	-191	28	-337
Dundee City	16,940	17,690	17,270	15,280	15,830	17,410	470	3%	19	34	9
East Ayrshire	14,680	15,850	16,330	14,910	13,300	13,000	-1,680	-11%	-67	165	-222
East Dunbartonshire	13,570	13,850	12,790	10,300	8,850	8,800	-4,770	-35%	-191	-77	-267
East Lothian	12,070	13,670	14,460	13,570	12,220	12,180	110	1%	4	239	-152
East Renfrewshire	11,420	12,180	11,550	9,420	7,870	7,900	-3,530	-31%	-141	13	-244
Edinburgh, City of	52,060	56,730	60,630	63,110	72,180	80,280	28,230	54%	1,129	857	1,310
Eilean Siar	3,400	3,580	3,680	3,460	3,130	2,950	-450	-13%	-18	28	-48
Falkirk	18,300	20,140	21,610	21,210	20,420	20,060	1,760	10%	70	331	-104
Fife	43,440	46,870	48,410	45,100	42,120	43,390	-60	0%	-2	497	-335
Glasgow City	70,660	78,690	82,380	81,030	86,450	93,870	23,220	33%	929	1,172	766
Highland	29,970	32,180	32,870	31,230	29,540	29,840	-120	0%	-5	291	-202
Inverclyde	10,600	11,170	10,720	8,960	7,650	7,450	-3,150	-30%	-126	12	-218
Midlothian	9,970	10,480	10,440	9,220	8,190	8,060	-1,920	-19%	-77	47	-159
Moray	11,060	11,770	12,110	11,030	9,530	8,800	-2,250	-20%	-90	106	-221
North Ayrshire	17,010	17,830	17,590	15,690	13,880	13,480	-3,530	-21%	-141	58	-274
North Lanarkshire	40,140	43,750	45,250	42,130	39,140	38,410	-1,730	-4%	-69	510	-456
Orkney Islands	2,630	2,900	2,960	2,750	2,520	2,560	-70	-3%	-3	33	-27
Perth & Kinross	17,860	19,280	19,780	18,530	17,740	19,590	1,730	10%	69	192	-12
Renfrewshire	22,370	24,060	24,010	21,010	18,730	18,300	-4,070	-18%	-163	164	-381
Scottish Borders	14,750	16,190	16,870	15,720	14,280	13,960	-790	-5%	-32	212	-194
Shetland Islands	2,780	2,920	3,020	2,870	2,600	2,390	-390	-14%	-16	23	-42
South Ayrshire	14,460	14,850	14,400	12,540	11,110	11,160	-3,310	-23%	-132	-6	-217
South Lanarkshire	39,110	42,100	42,610	39,120	36,890	37,420	-1,690	-4%	-68	350	-346
Stirling	10,590	11,280	11,490	9,950	8,450	8,440	-2,150	-20%	-86	90	-203
West Dunbartonshire	11,690	12,460	12,040	10,550	9,390	9,550	-2,140	-18%	-86	35	-166
West Lothian	20,370	22,870	24,540	23,170	21,040	20,590	220	1%	9	417	-263

1. Average annual change is the result of dividing the absolute change (before rounding) by the number of years referred to.

Household figures are rounded to the nearest 10.

**Table 15: Household projections for Scotland, by local authority area and age group, 2008-2033: Households headed by someone aged 60-74**

Local authority	2008	2013	2018	2023	2028	2033	Change		Average annual change <sup>1</sup>		
							2008 - 2033		2008-2033	2008-2018	2018-2033
<b>Scotland</b>	<b>493,230</b>	<b>520,950</b>	<b>557,170</b>	<b>588,720</b>	<b>623,650</b>	<b>626,730</b>	<b>133,510</b>	<b>27%</b>	<b>5,340</b>	<b>6,394</b>	<b>4,638</b>
Aberdeen City	17,020	17,970	19,710	21,050	21,730	21,600	4,570	27%	183	269	126
Aberdeenshire	22,770	25,960	29,190	31,010	33,000	33,550	10,780	47%	431	642	291
Angus	12,220	13,190	13,850	14,220	14,690	14,810	2,590	21%	104	162	64
Argyll & Bute	11,060	11,490	11,660	11,510	11,650	11,190	130	1%	5	60	-32
Clackmannanshire	4,900	5,330	5,720	6,000	6,550	6,890	1,990	41%	80	82	78
Dumfries & Galloway	18,110	19,160	19,630	19,850	20,170	19,600	1,490	8%	60	152	-2
Dundee City	13,910	13,880	14,250	14,710	14,960	14,340	430	3%	17	34	6
East Ayrshire	12,330	12,950	13,440	13,690	14,370	14,560	2,230	18%	89	111	75
East Dunbartonshire	10,500	10,750	11,340	11,780	11,950	10,930	430	4%	17	84	-27
East Lothian	9,580	10,260	11,170	12,030	13,260	13,730	4,150	43%	166	159	171
East Renfrewshire	8,260	8,430	9,100	9,670	10,090	9,350	1,080	13%	43	84	16
Edinburgh, City of	35,800	37,830	41,660	45,350	48,940	51,170	15,370	43%	615	586	634
Eilean Siar	3,140	3,370	3,540	3,670	3,830	3,900	760	24%	30	40	24
Falkirk	14,260	15,160	15,910	16,840	18,150	19,040	4,770	33%	191	165	208
Fife	35,420	38,060	40,760	42,240	44,830	45,340	9,920	28%	397	534	306
Glasgow City	46,050	45,280	49,550	55,950	61,460	62,800	16,750	36%	670	350	883
Highland	23,690	26,480	28,770	30,330	31,790	31,940	8,250	35%	330	508	212
Inverclyde	8,090	8,360	8,780	9,370	9,660	9,060	960	12%	39	69	18
Midlothian	7,950	8,560	9,040	9,270	9,520	9,350	1,400	18%	56	109	21
Moray	9,460	9,990	10,570	10,940	11,410	11,560	2,090	22%	84	111	65
North Ayrshire	14,960	16,000	16,680	16,980	17,580	17,230	2,260	15%	91	172	37
North Lanarkshire	30,460	31,760	33,880	36,130	38,990	39,660	9,200	30%	368	342	385
Orkney Islands	2,250	2,510	2,650	2,820	3,040	3,050	790	35%	32	40	26
Perth & Kinross	15,400	16,750	17,830	18,530	19,610	19,840	4,440	29%	177	243	134
Renfrewshire	16,780	17,090	17,740	18,680	19,720	19,310	2,530	15%	101	96	105
Scottish Borders	12,420	13,430	14,220	14,690	15,480	15,630	3,210	26%	128	180	94
Shetland Islands	2,170	2,500	2,680	2,840	2,930	3,030	860	40%	34	51	23
South Ayrshire	12,680	13,150	13,660	13,790	13,910	13,270	590	5%	24	98	-26
South Lanarkshire	29,410	31,020	33,670	36,100	38,430	38,320	8,910	30%	356	426	310
Stirling	8,630	9,110	9,320	9,530	10,010	10,000	1,370	16%	55	69	45
West Dunbartonshire	8,760	9,100	9,860	10,370	10,990	10,440	1,680	19%	67	110	38
West Lothian	14,760	16,080	17,330	18,780	20,960	22,260	7,510	51%	300	257	329

1. Average annual change is the result of dividing the absolute change (before rounding) by the number of years referred to.

Household figures are rounded to the nearest 10.

**Table 16: Household projections for Scotland, by local authority area and age group, 2008-2033: Households headed by someone aged 75+**

Local authority	2008	2013	2018	2023	2028	2033	Change		Average annual change <sup>1</sup>		
							2008 - 2033		2008-2033	2008-2018	2018-2033
<b>Scotland</b>	<b>289,350</b>	<b>316,530</b>	<b>353,560</b>	<b>414,810</b>	<b>470,000</b>	<b>525,970</b>	<b>236,620</b>	<b>82%</b>	<b>9,465</b>	<b>6,421</b>	<b>11,494</b>
Aberdeen City	11,670	12,070	12,630	14,050	15,780	17,740	6,070	52%	243	95	341
Aberdeenshire	12,840	15,030	18,000	22,920	27,820	32,650	19,800	154%	792	516	976
Angus	7,280	8,200	9,320	11,230	12,800	14,010	6,730	93%	269	205	313
Argyll & Bute	6,360	7,070	8,210	9,790	10,830	11,700	5,340	84%	214	186	232
Clackmannanshire	2,560	2,930	3,390	4,240	4,890	5,490	2,930	115%	117	83	140
Dumfries & Galloway	10,670	12,060	14,000	16,640	18,850	20,540	9,880	93%	395	334	436
Dundee City	9,600	10,160	10,560	11,460	12,160	13,040	3,450	36%	138	96	166
East Ayrshire	6,840	7,610	8,630	10,320	11,710	12,780	5,940	87%	238	178	277
East Dunbartonshire	6,310	7,270	8,210	9,530	10,660	11,890	5,570	88%	223	190	245
East Lothian	5,840	6,470	7,350	8,810	10,000	11,330	5,490	94%	220	151	265
East Renfrewshire	5,430	6,110	6,710	7,760	8,620	9,800	4,380	81%	175	129	206
Edinburgh, City of	25,090	25,980	27,210	30,780	34,750	39,280	14,180	57%	567	211	804
Eilean Siar	1,870	2,040	2,320	2,710	3,100	3,370	1,500	80%	60	44	70
Falkirk	7,920	8,840	10,160	12,040	13,790	15,290	7,370	93%	295	225	341
Fife	20,470	22,520	25,610	31,100	35,490	39,620	19,150	94%	766	514	934
Glasgow City	28,540	27,830	27,600	28,760	30,720	35,080	6,540	23%	262	-94	499
Highland	13,010	14,980	17,730	21,760	25,740	29,330	16,330	126%	653	472	774
Inverclyde	4,890	5,150	5,560	6,240	6,880	7,570	2,680	55%	107	66	134
Midlothian	4,130	4,770	5,400	6,570	7,460	8,220	4,090	99%	164	127	188
Moray	5,320	6,120	7,060	8,440	9,620	10,620	5,300	100%	212	175	237
North Ayrshire	7,830	8,730	10,130	12,180	13,710	14,980	7,140	91%	286	230	323
North Lanarkshire	15,420	17,240	19,580	22,760	25,610	28,820	13,400	87%	536	416	616
Orkney Islands	1,280	1,510	1,900	2,350	2,780	3,170	1,900	149%	76	62	85
Perth & Kinross	9,580	10,580	12,140	14,610	16,860	18,800	9,220	96%	369	256	444
Renfrewshire	9,240	10,200	11,170	12,760	14,080	15,360	6,120	66%	245	193	279
Scottish Borders	7,500	8,240	9,600	11,790	13,600	15,190	7,690	103%	308	210	373
Shetland Islands	1,210	1,410	1,750	2,180	2,630	2,950	1,740	144%	70	54	80
South Ayrshire	7,990	8,780	9,710	11,250	12,540	13,690	5,700	71%	228	173	265
South Lanarkshire	16,310	18,240	20,650	24,010	27,190	30,920	14,610	90%	584	434	685
Stirling	4,830	5,430	6,250	7,470	8,410	9,080	4,250	88%	170	141	189
West Dunbartonshire	5,050	5,070	5,290	6,040	6,630	7,460	2,410	48%	97	25	145
West Lothian	6,500	7,880	9,730	12,240	14,310	16,200	9,700	149%	388	323	431

1. Average annual change is the result of dividing the absolute change (before rounding) by the number of years referred to.

Household figures are rounded to the nearest 10.

**Table 17: Projected average household size, by local authority area, 2008-2033**

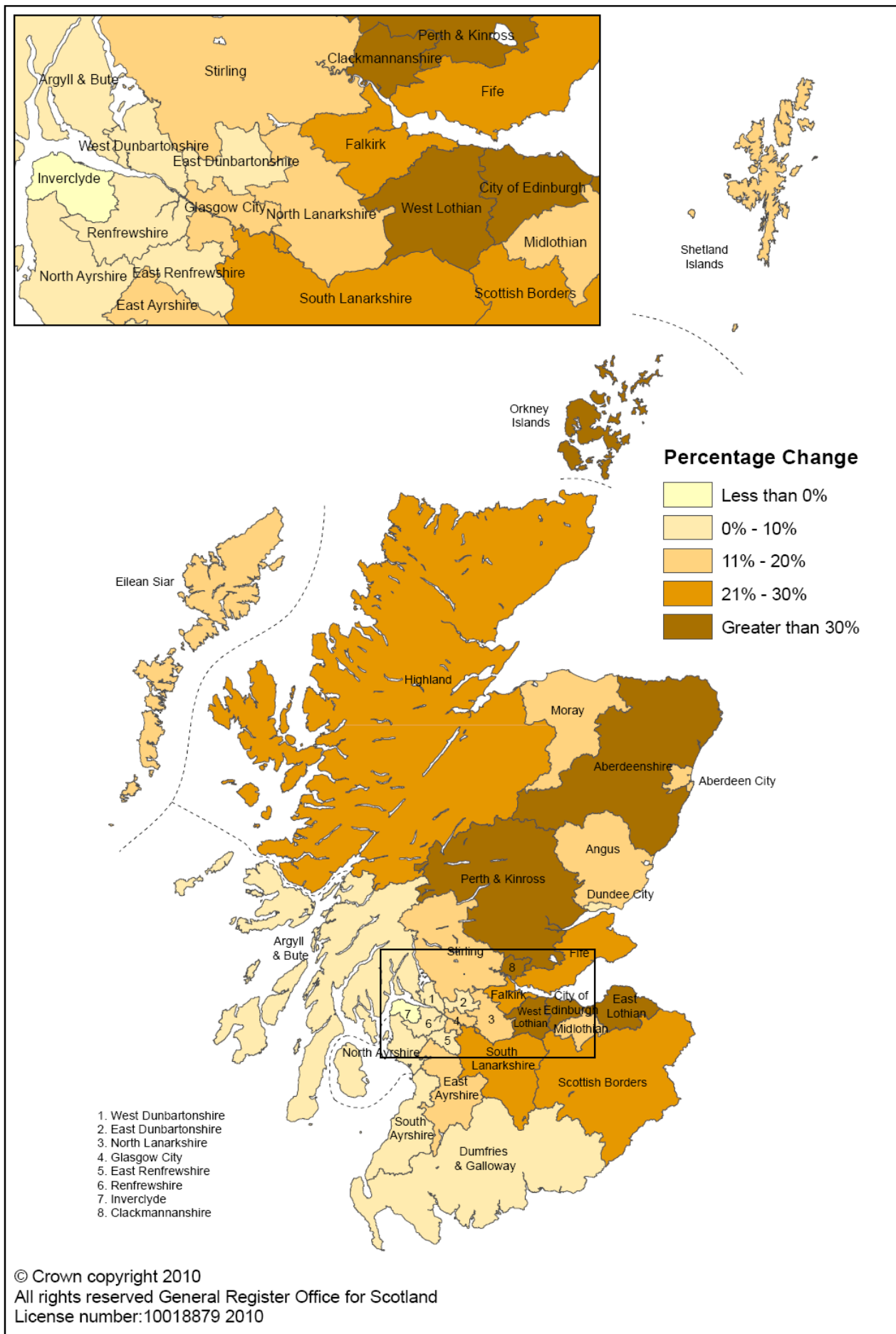
Local authority	2008	2013	2018	2023	2028	2033
<b>Scotland</b>	<b>2.18</b>	<b>2.12</b>	<b>2.06</b>	<b>2.02</b>	<b>1.97</b>	<b>1.93</b>
Aberdeen City	1.96	1.90	1.86	1.82	1.77	1.72
Aberdeenshire	2.36	2.31	2.25	2.20	2.16	2.12
Angus	2.18	2.13	2.09	2.05	2.01	1.97
Argyll & Bute	2.10	2.05	2.00	1.96	1.93	1.90
Clackmannanshire	2.18	2.12	2.06	2.01	1.96	1.91
Dumfries & Galloway	2.17	2.12	2.07	2.03	1.99	1.94
Dundee City	2.01	1.95	1.92	1.89	1.85	1.80
East Ayrshire	2.24	2.18	2.12	2.08	2.04	2.00
East Dunbartonshire	2.43	2.37	2.29	2.22	2.15	2.09
East Lothian	2.25	2.23	2.19	2.17	2.15	2.13
East Renfrewshire	2.49	2.44	2.39	2.35	2.31	2.26
Edinburgh, City of	2.10	2.04	1.98	1.93	1.87	1.82
Eilean Siar	2.19	2.10	2.02	1.95	1.89	1.84
Falkirk	2.21	2.16	2.10	2.05	2.00	1.95
Fife	2.22	2.16	2.11	2.06	2.01	1.97
Glasgow City	2.02	1.95	1.88	1.83	1.78	1.73
Highland	2.16	2.11	2.06	2.02	1.98	1.94
Inverclyde	2.18	2.11	2.04	1.99	1.94	1.88
Midlothian	2.32	2.26	2.20	2.15	2.11	2.06
Moray	2.20	2.15	2.09	2.06	2.04	2.01
North Ayrshire	2.19	2.13	2.07	2.01	1.96	1.91
North Lanarkshire	2.25	2.19	2.13	2.07	2.02	1.97
Orkney Islands	2.17	2.07	2.00	1.94	1.89	1.83
Perth & Kinross	2.18	2.15	2.10	2.06	2.03	1.99
Renfrewshire	2.13	2.08	2.03	1.99	1.95	1.90
Scottish Borders	2.17	2.13	2.08	2.05	2.01	1.98
Shetland Islands	2.27	2.15	2.04	1.95	1.87	1.79
South Ayrshire	2.16	2.11	2.06	2.03	1.99	1.95
South Lanarkshire	2.27	2.21	2.15	2.10	2.05	2.01
Stirling	2.24	2.17	2.10	2.06	2.02	1.98
West Dunbartonshire	2.18	2.13	2.07	2.02	1.97	1.92
West Lothian	2.33	2.30	2.24	2.19	2.16	2.12

Average household size is the result of dividing "private household population" by "all households"

**Table 18: Comparison between principal, low and high migration variant household projections by local authority area, 2013-2033**

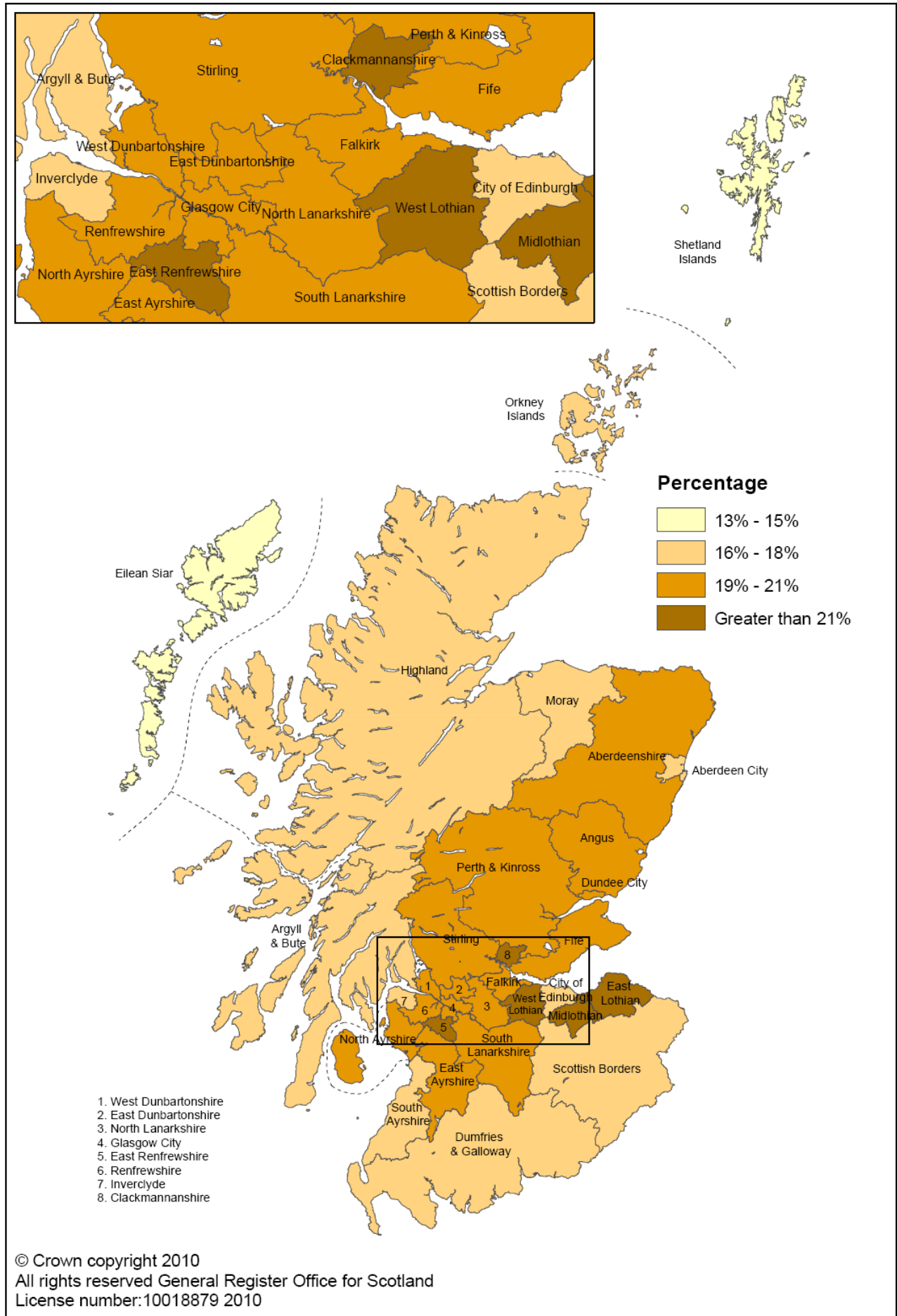
Local authority	2013			2018			2023			2028			2033			% difference between principal and variant migration projections in 2033	
	Low migration	Principal	High migration	Low migration	Principal	High migration	Low migration	Principal	High migration	Low migration	Principal	High migration	Low migration	Principal	High migration	Low	High
	<b>Scotland</b>	<b>2,425,160</b>	<b>2,440,440</b>	<b>2,455,690</b>	<b>2,512,410</b>	<b>2,549,930</b>	<b>2,587,360</b>	<b>2,583,190</b>	<b>2,645,300</b>	<b>2,707,270</b>	<b>2,643,250</b>	<b>2,731,760</b>	<b>2,820,050</b>	<b>2,695,460</b>	<b>2,812,520</b>	<b>2,929,300</b>	<b>-4%</b>
Aberdeen City	106,460	108,150	108,900	108,170	112,200	114,060	108,870	115,460	118,510	109,450	118,810	123,110	109,640	122,070	127,750	-10%	5%
Aberdeenshire	108,210	108,410	109,300	115,380	116,070	118,040	122,360	123,660	126,770	128,670	130,610	134,990	134,520	137,170	142,890	-2%	4%
Angus	51,970	52,010	52,350	53,890	54,050	54,860	55,630	55,910	57,300	57,150	57,570	59,560	58,490	59,070	61,740	-1%	5%
Argyll & Bute	41,540	41,780	41,920	41,790	42,500	43,070	41,760	43,000	44,070	41,350	43,120	44,750	40,560	42,900	45,090	-5%	5%
Clackmannanshire	24,430	24,460	24,640	26,180	26,320	26,690	27,910	28,150	28,720	29,650	30,040	30,770	31,370	31,920	32,830	-2%	3%
Dumfries & Galloway	69,300	69,780	70,260	70,230	71,460	72,630	70,710	72,750	74,680	70,880	73,770	76,520	70,620	74,410	78,080	-5%	5%
Dundee City	69,930	70,770	71,190	69,650	71,430	72,510	68,840	71,630	73,470	68,220	72,070	74,750	67,320	72,290	75,910	-7%	5%
East Ayrshire	54,570	54,880	55,150	55,750	56,440	56,960	56,490	57,580	58,380	56,830	58,360	59,470	57,000	59,000	60,450	-3%	2%
East Dunbartonshire	43,130	43,420	43,450	43,340	43,910	44,040	43,230	44,080	44,330	42,780	43,920	44,320	41,880	43,350	43,890	-3%	1%
East Lothian	44,660	45,030	45,560	47,650	48,440	49,320	50,770	51,970	53,190	53,750	55,370	56,950	56,750	58,800	60,770	-3%	3%
East Renfrewshire	36,010	36,190	36,240	36,330	36,730	36,890	36,540	37,160	37,440	36,560	37,420	37,810	36,520	37,670	38,160	-3%	1%
Edinburgh, City of	230,370	232,530	234,850	242,370	248,410	254,720	252,660	263,120	273,940	263,080	278,310	294,080	272,760	293,150	314,320	-7%	7%
Eilean Siar	12,150	12,170	12,230	12,450	12,590	12,780	12,680	12,940	13,260	12,820	13,220	13,680	12,860	13,400	14,020	-4%	5%
Falkirk	71,290	71,350	71,760	75,230	75,440	76,490	78,950	79,300	81,050	82,400	82,870	85,380	85,830	86,410	89,740	-1%	4%
Fife	167,020	167,720	168,610	174,380	176,380	178,670	180,590	184,070	187,890	186,080	191,150	196,650	191,070	197,860	205,160	-3%	4%
Glasgow City	291,440	295,010	296,940	300,070	307,930	312,740	305,090	317,700	325,730	308,300	326,020	337,460	310,840	334,100	349,180	-7%	5%
Highland	105,980	106,320	107,410	111,850	112,870	115,380	117,150	118,920	122,970	121,840	124,430	130,130	126,330	129,790	137,260	-3%	6%
Inverclyde	36,630	36,830	36,920	36,450	36,840	37,170	35,870	36,430	37,040	34,890	35,630	36,540	33,680	34,610	35,810	-3%	3%
Midlothian	35,620	35,940	36,170	36,490	37,100	37,470	37,200	38,130	38,630	37,640	38,910	39,550	37,930	39,560	40,360	-4%	2%
Moray	39,860	40,180	40,510	40,770	41,560	42,380	41,180	42,480	43,870	41,230	43,100	45,130	41,030	43,480	46,230	-6%	6%
North Ayrshire	63,020	63,360	63,630	64,150	64,910	65,570	64,790	66,000	67,060	64,940	66,610	68,130	64,630	66,810	68,820	-3%	3%
North Lanarkshire	148,310	148,890	149,230	153,560	154,830	155,780	157,910	159,860	161,530	161,410	164,090	166,540	164,760	168,230	171,480	-2%	2%
Orkney Islands	9,680	9,730	9,780	10,230	10,380	10,460	10,660	10,960	11,030	11,050	11,510	11,580	11,350	11,980	12,040	-5%	1%
Perth & Kinross	68,800	68,990	69,980	73,720	74,120	76,310	78,430	79,080	82,500	83,100	84,020	88,730	87,830	89,030	95,170	-1%	7%
Renfrewshire	79,990	80,480	80,730	80,800	81,740	82,410	81,040	82,470	83,590	80,750	82,690	84,330	80,300	82,790	85,010	-3%	3%
Scottish Borders	53,730	54,130	54,700	56,120	57,120	58,260	58,230	59,910	61,650	60,090	62,480	64,870	61,700	64,880	67,940	-5%	5%
Shetland Islands	10,030	10,100	10,190	10,360	10,560	10,770	10,550	10,900	11,260	10,560	11,090	11,590	10,420	11,140	11,830	-6%	6%
South Ayrshire	51,990	52,190	52,370	52,800	53,380	53,820	53,240	54,220	54,960	53,450	54,870	55,920	53,500	55,390	56,760	-3%	2%
South Lanarkshire	141,530	141,590	141,960	147,810	148,430	149,440	153,350	154,600	156,330	158,480	160,450	162,920	163,290	165,980	169,220	-2%	2%
Stirling	38,980	39,190	39,370	40,390	40,960	41,580	41,540	42,540	43,690	42,440	43,900	45,620	43,140	45,090	47,460	-4%	5%
West Dunbartonshire	41,920	42,090	42,200	42,390	42,710	43,060	42,570	43,060	43,650	42,540	43,190	44,040	42,250	43,060	44,240	-2%	3%
West Lothian	76,630	76,750	77,200	81,640	82,090	83,060	86,420	87,280	88,770	90,860	92,180	94,190	95,260	97,100	99,680	-2%	3%

**Map 1: Projected percentage change in households by local authority area, 2008 to 2033**

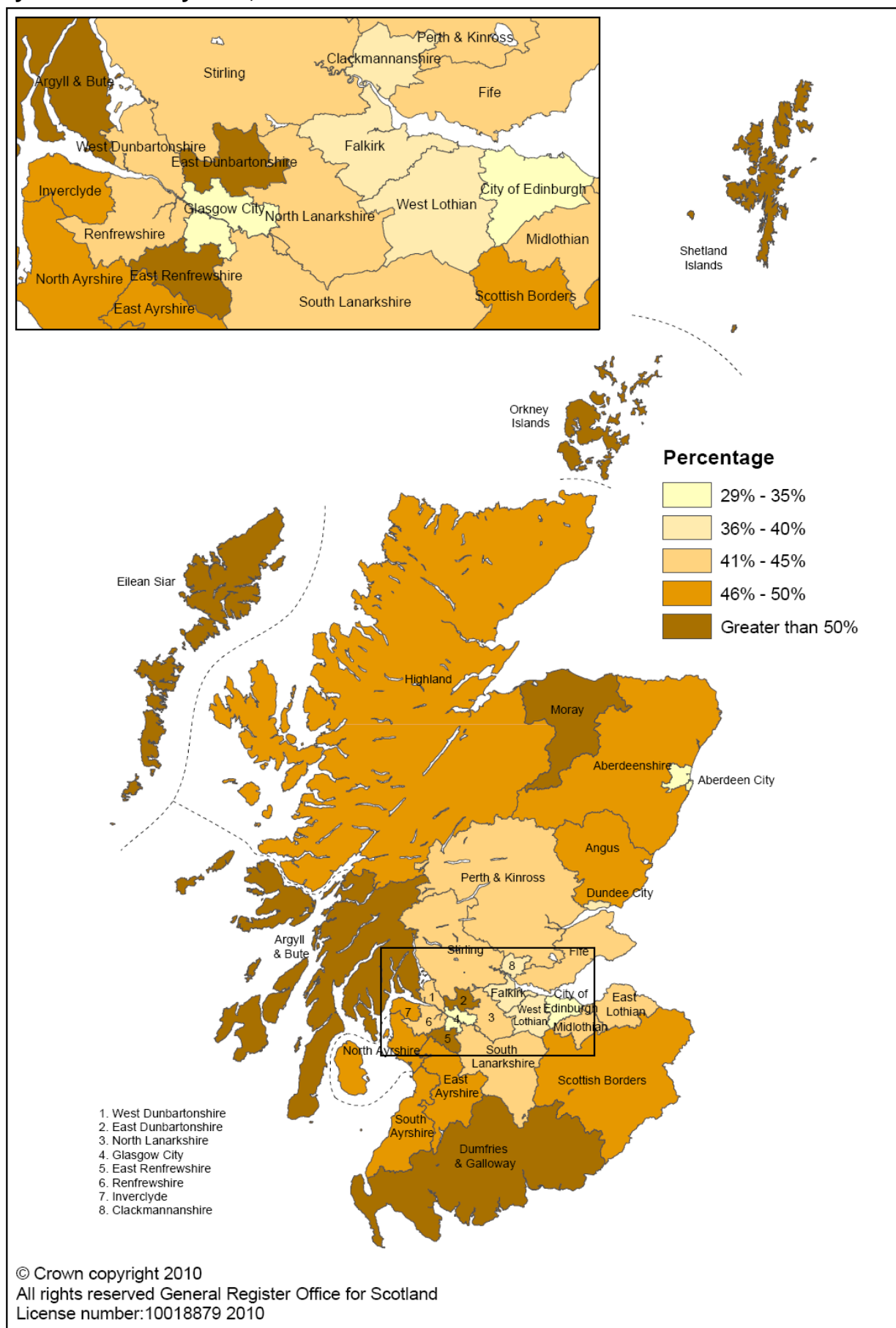




**Map 3: Projected percentage of households with children by local authority area, 2033**



**Map 4: Projected percentage of households headed by someone aged 60 and over by local authority area, 2033**



## 9. Notes on statistical publications

### National Statistics

This is a National Statistics publication. It has been produced to the high professional standards set out in the UK Statistics Authority Code of Practice for Official Statistics (<http://www.statisticsauthority.gov.uk/assessment/code-of-practice/index.html>). These statistics undergo regular quality assurance reviews to ensure that they meet customer needs. They are produced free from any political interference.

### Enquiries

Enquiries about this publication should be addressed to:

Statistics Customer Services,  
General Register Office for Scotland,  
Ladywell House,  
Edinburgh,  
EH12 7TF.  
Telephone: (0131) 314 4299  
E-mail: [customer@gro-scotland.gsi.gov.uk](mailto:customer@gro-scotland.gsi.gov.uk)

### General Register Office for Scotland

The General Register Office for Scotland (GROS) is the department of the devolved Scottish Administration responsible for the registration of births, marriages, civil partnerships, deaths, divorces and adoptions in Scotland. We are responsible for the Census of Population in Scotland which we use, with other sources of information, to produce population and household statistics. We make available important information for family history. The GROS website is <http://www.gro-scotland.gov.uk>. Our aim is to provide relevant and reliable information, analysis and advice that meet the needs of government, business and the people of Scotland.

Further detailed statistics produced by GROS are available from the Statistics Section on the GROS website (<http://www.gro-scotland.gov.uk/statistics/index.html>). Statistics from the 2001 Census are on Scotland's Census Results On-Line website (<http://www.scrol.gov.uk>) and on the Census section of the GROS website (<http://www.gro-scotland.gov.uk/census/index.html>).

Information about future publications is provided on the GROS website (<http://www.gro-scotland.gov.uk/futurepb.html>). If you would like to receive notification of forthcoming statistical publications, you can register your interest on the Scottish Government ScotStat website at <http://www.scotland.gov.uk/scotstat>.

### Comments and complaints

If you are not satisfied with our service, please write to Kirsty MacLachlan, Head of Demography Division, General Register Office for Scotland, Room 1/2/7, Ladywell House, Ladywell Road, Edinburgh EH12 7TF. Telephone: (0131) 314 4242, E-mail: [kirsty.maclachlan@gro-scotland.gsi.gov.uk](mailto:kirsty.maclachlan@gro-scotland.gsi.gov.uk). We also welcome any comments or suggestion that would help us to improve our standards of service.

## Related organisations

Organisation	Contact
<p>The Scottish Government (SG) forms the bulk of the devolved Scottish Administration. The aim of the statistical service in the SG is to provide relevant and reliable statistical information, analysis and advice that meets the needs of government, business and the people of Scotland.</p>	<p>Office of the Chief Statistician, Scottish Government, 1.N04, St Andrew's House, Edinburgh, EH1 3DG.</p> <p>Telephone: (0131) 244 0442</p> <p>E-mail: <a href="mailto:statistics.enquiries@scotland.gsi.gov.uk">statistics.enquiries@scotland.gsi.gov.uk</a></p> <p>Website: <a href="http://www.scotland.gov.uk/Topics/Statistics">http://www.scotland.gov.uk/Topics/Statistics</a></p>
<p>The Office for National Statistics (ONS) is responsible for producing a wide range of economic and social statistics. It also, for England and Wales, registers life events and holds the Census of Population.</p>	<p>Customer Contact Centre, Room 1.015, Office for National Statistics, Cardiff Road, Newport, NP10 8XG.</p> <p>Telephone: 0845 601 3034</p> <p>Minicom: 01633 812399</p> <p>E-mail: <a href="mailto:info@statistics.gsi.gov.uk">info@statistics.gsi.gov.uk</a></p> <p>Website: <a href="http://www.ons.gov.uk">http://www.ons.gov.uk</a></p>
<p>The Northern Ireland Statistics and Research Agency (NISRA) is Northern Ireland's official statistics organisation. The Agency also has responsibility, in Northern Ireland, for the registration of births, marriages, adoptions and deaths and the Census of Population.</p>	<p>Northern Ireland Statistics and Research Agency, McAuley House, 2-14 Castle Street, Belfast, BT1 1SA.</p> <p>Telephone: 028 9034 8100</p> <p>Website: <a href="http://www.nisra.gov.uk">http://www.nisra.gov.uk</a></p>

© Crown Copyright. Brief extracts from the Crown Copyright material in this publication may be reproduced provided the source is fully acknowledged.