



**General Register Office**  
*for*  
**SCOTLAND**  
*information about Scotland's people*

---

***Mid-2008 Population Estimates Scotland***  
Population estimates by sex, age and administrative  
area

Published on 28 April 2009

---

A National Statistics publication for Scotland

National Statistics are produced to high professional standards set out in the National Statistics Code of Practice. They undergo regular quality assurance reviews to ensure that they meet customer needs. They are produced free from any political interference.



## Contents

Main Points .....	1
1. Background .....	2
2. The Population of Scotland.....	2
3. The Age and Sex Structure of the Population.....	4
4. Results for Administrative Areas.....	6
4.1 Population Change 2007-2008 .....	6
4.2 Components of migration 2007-2008 .....	6
4.3 Population Change 1998-2008 .....	8
4.4 Sex and Age Structure of Administrative Areas in Scotland.....	12
5. Population Density.....	14
6. Notes and Definitions.....	35
7. Notes on Statistical Publications.....	40

## List of Tables

Table 1 Estimated population by age and sex, Scotland: 30 June 2008.....	15
Table 2 Estimated population by sex, single year of age and administrative area: 30 June 2008.....	16
Table 3 Estimated population by sex, five year age group and administrative area: 30 June 2008 .....	25
Table 4 Components of population change by administrative area: 2007-2008 .....	28
Table 5 Components of migration by administrative area: 2007-2008.....	29
Table 6 Components of population change by administrative area: 2001-2008 .....	30
Table 7 Components of population change by administrative area: 1998-2008 .....	31
Table 8 Age and sex structure of administrative areas: 30 June 2008 .....	32
Table 9 Rest of UK/Overseas moves by age group: 2007-2008.....	33
Table 10 Land area and population density, by administrative area: 30 June 2008 .....	34

## List of Figures

Figure 1 Estimated population of Scotland, 1951-2008 .....	3
Figure 2 Natural change and net migration, 1951-2008.....	4
Figure 3 Estimated population by age and sex, 30 June 2008 .....	5
Figure 4 The changing age structure of Scotland's population, 1998-2008 .....	6
Figure 5a Origin of in-migrants by Council areas, 2007–2008, (ranked by increasing percentage of migrants from within Scotland).....	8
Figure 5b Destination of out-migrants by Council areas, 2007–2008 (ranked by increasing percentage of migrants to within Scotland).....	8
Figure 6a Percentage change in population, Council areas, 1998-2008 (Map) .....	9
Figure 6b Percentage change in population, Council areas, 1998-2008 (Chart) .....	10
Figure 7a Percentage change in population, NHS Board areas, 1998-2008 (Map) .....	11
Figure 7b Percentage change in population, NHS Board areas, 1998-2008 (Chart) .....	12
Figure 8 Age structure of Council areas, 30 June 2008 (% under 16, 16-64 and 65+), (ranked by percentage aged 65+).....	13
Figure 9 Age structure of NHS Board areas, 30 June 2008 (% under 16, 16-64 and 65+), (ranked by percentage aged 65+).....	13

## Main Points

The key points in this publication are:-

- The estimated population of Scotland on 30 June 2008 was 5,168,500, a rise of 24,300 on the previous year and the highest since 1981;
- Between mid-2001 and mid-2008, Scotland's population increased by 2.1 per cent (+104,300) from 5.06 million to 5.17 million;
- Between mid-1998 and mid-2008, Scotland's population increased by 1.8 per cent (+91,430) from 5.08 million to 5.17 million;
- In the twelve months up to 30 June 2008, the number of births exceeded the number of deaths by 3,900, the largest natural increase since 1991-92;
- Over the year there was a net migration gain of 20,000 people. This includes net gains of 11,500 people from the rest of the UK, 7,700 people from overseas (including asylum seekers) and 800 people from the armed forces;
- Over the year 38,500 people (including asylum seekers) came to Scotland from overseas and 30,800 left Scotland to go overseas. The net gain of 7,700 is lower than the record gain of 16,800 in 2006-07 because more people left Scotland;
- The net gain from the rest of the UK exceeded that from overseas. Over the year 53,300 people came to Scotland from England, Wales and Northern Ireland and 41,800 left Scotland to go in the opposite direction. The net gain of 11,500 is greater than the previous year's 8,800 net gain because more people came to Scotland and fewer left;
- Among Council areas, between mid-2007 and mid-2008, East Lothian had the largest percentage population increase at +1.8 per cent followed by Perth & Kinross (+1.4 per cent) and Midlothian (+1.3 per cent). Argyll & Bute had the largest percentage population decrease at -0.9 per cent, followed by Eilean Siar and Inverclyde each with a percentage decrease of -0.4 per cent;
- Among NHS Board areas, Lothian (+1.0 per cent), Borders (+0.9 per cent) and Grampian (+0.8 per cent) had the largest percentage population increases. The only NHS Board area to have experienced a decline in population was Western Isles (-0.4 per cent);
- In the year to mid-2008, the city Council areas experienced net losses of migrants to the rest of Scotland. However, more migrants came to the city Council areas from both the rest of the UK and from overseas than went in the other direction;
- There were 66 people per square kilometre in Scotland, ranging from 9 persons per square kilometre in Eilean Siar and Highland Council areas to 3,329 persons per square kilometre in Glasgow City Council area.

## 1. Background

1.1 This paper summarises the Registrar General for Scotland's mid-2008 estimates of the population of Scotland and its administrative areas. Some relevant historical information and a table giving land areas and population densities are also presented.

1.2 These population estimates are produced using the demographic cohort component method. The estimates are based on the 2001 Census. Each year the population is 'aged on' one year (that is, the 0 year olds become 1 year olds, and so on), the number of births in the year are added, the number of deaths subtracted and adjustments are made for estimated migration and other changes in special populations. It is important to remember that while the number of births and deaths are considered to be almost complete, there is no comprehensive source of migration data for moves within Scotland, or to and from the rest of the UK and the rest of the world. Estimates of migration are made using the best proxy sources available including health service patient registrations and survey information. Therefore, any error in the estimates is likely to be due to the migration estimates, particularly the international estimates. The method used to estimate migration is described in [Section 6](#).

1.3 The Scottish Government has set a target to match average European (EU15) population growth over the period from 2007 to 2017. The population estimates in this publication will be used to measure how Scotland performs against this target. More details can be found on the Scotland Performs website at <http://www.scotland.gov.uk/About/scotPerforms>.

1.4 Population estimates are used for a variety of different purposes including resource allocation and planning of services such as education and health.

## 2. The Population of Scotland

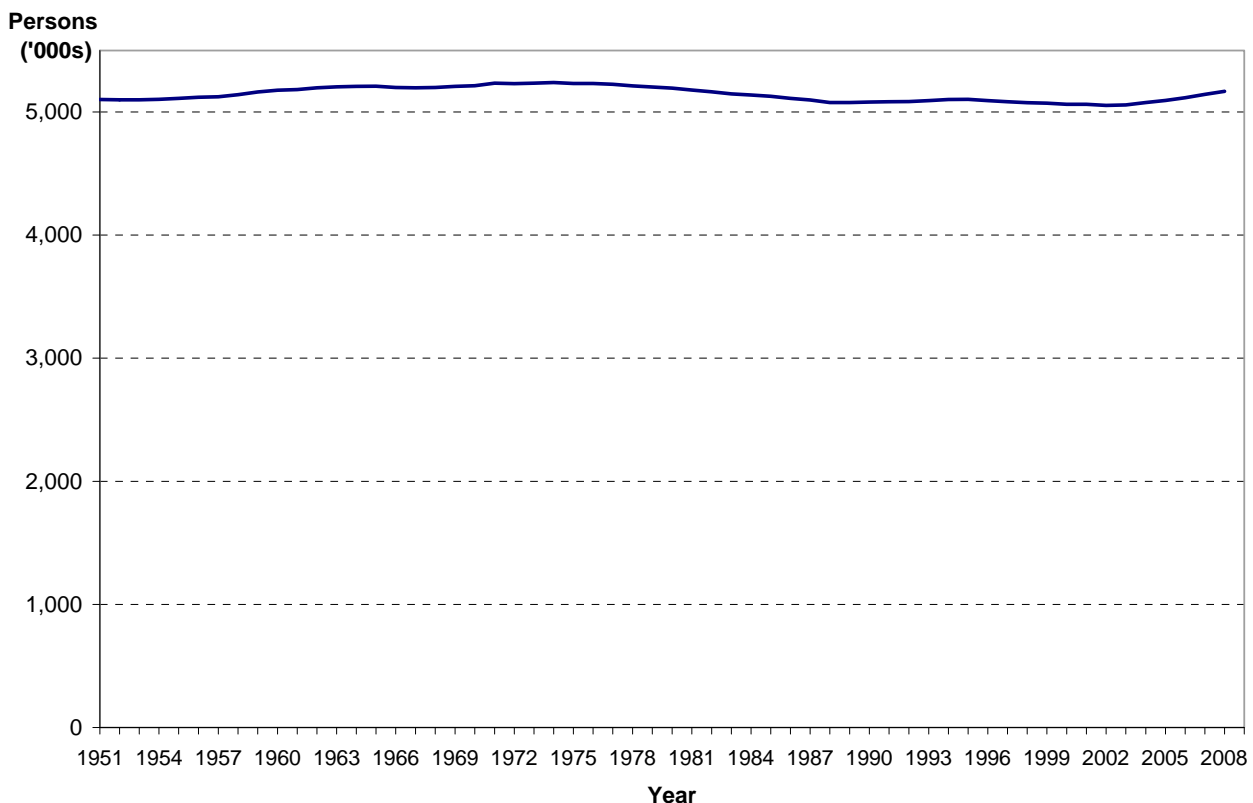
2.1 The estimated population of Scotland on 30 June 2008 was 5,168,500 – the highest since 1981. This represents an increase of 24,300 on the previous year and of almost 114,000 compared to mid-2002, when the population hit its lowest level since just after the Second World War. In the twelve months to mid-2008, there was a net migration gain of 20,000 people, consisting of a net gain of 11,500 people from the rest of the UK, a net gain of 7,700 from overseas (including asylum seekers) and a net gain of 800 due to movements to and from the armed forces. Other changes (including changes in the prison population, and changes in the number of armed forces stationed in Scotland) amounted to an increase of 400 people. There were 59,200 births in 2007-08 (4.4 per cent more than the previous year and the largest number since 1996-97) and 55,300 deaths (0.6 per cent fewer than the previous year). The number of births in the twelve months up to mid-2008 exceeded the number of deaths by 3,900. This is the largest gain in population due to natural change (births minus deaths) since 1991-92 and compares to a gain of 1,100 in 2006-07.

2.2 This is the sixth year in a row that the Scottish population has increased and most of the increase was because more people migrated into Scotland than left. In 2007-08 around 53,300 people came to Scotland from England, Wales and Northern Ireland and 41,800 left Scotland to go in the opposite direction. The resulting net gain of 11,500 was greater than the previous year's 8,800 net gain because more people entered and fewer people left.

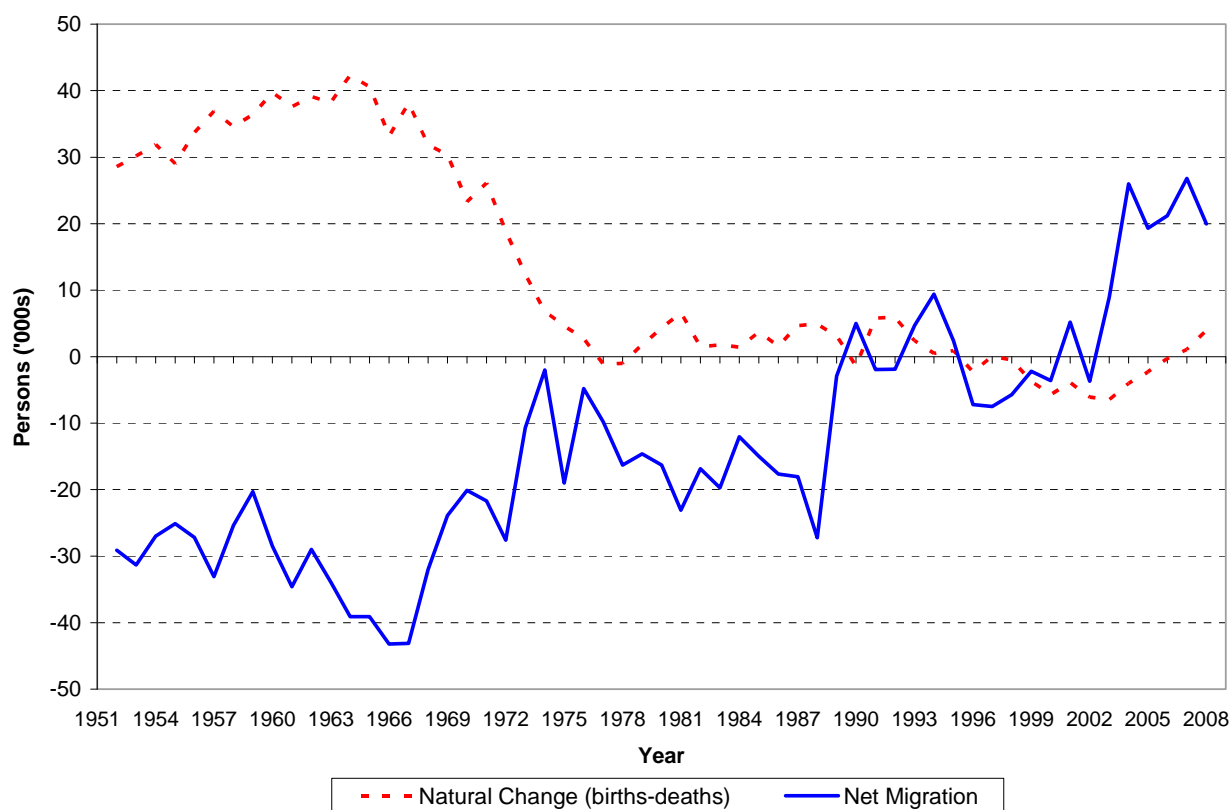
2.3 The overseas net gain of 7,700 came from an inflow of 38,500 and an outflow of 30,800. This compares to a net inflow of 16,800 the previous year which was a record gain. The difference is a result of more people leaving Scotland to go overseas despite slightly more people moving in the other direction: in the previous year, the inflow was 37,800 and the outflow 21,000. Estimating international migration is particularly difficult. The estimate is based primarily on the International Passenger Survey (IPS) which is a sample survey conducted at main airports and ports across the UK. The sample size for Scotland is very small (around 210 contacts in 2007-08). Internationally, a migrant is defined as someone who changes their country of usual residence for 12 months or more, so a short-term seasonal migrant worker will not be counted in the migration estimates or in the mid-year population estimates. More details about the migration data sources and definitions used can be found in [Section 6](#).

2.4 For comparison purposes it is better to look at a time frame of longer than one year, as population change tends to fluctuate from year to year, particularly for smaller areas. Between mid-2001 and mid-2008, Scotland's population increased by 2.1 per cent (+104,300) from 5.06 million to 5.17 million ([Table 6](#)). Over the last 10 years, between mid-1998 and mid-2008, Scotland's population increased by 1.8 per cent (+91,430) from 5.08 million ([Table 7](#) and [Figure 1](#)). As [Figure 2](#) shows, the main reason for the smaller increase over the longer period is that both migration and natural change (births minus deaths) were negative in the late 1990s.

**Figure 1 Estimated population of Scotland, 1951-2008**



**Figure 2 Natural change and net migration, 1951-2008**



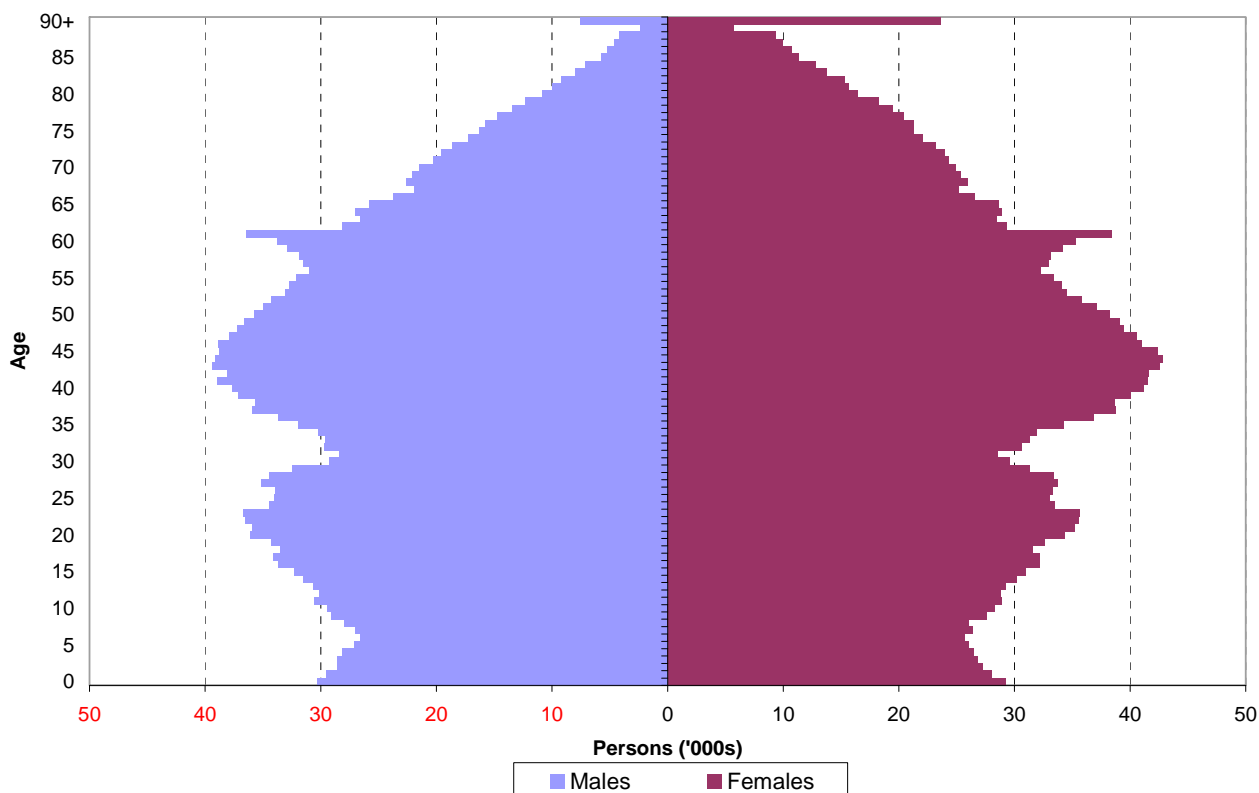
2.5 Table 9 shows movements to and from the UK and overseas between mid-2007 and mid-2008 by age group. The main source of data for the overseas migration calculations is the International Passenger Survey but, because of its small sample size, an age and sex distribution is calculated from General Medical Practitioner (GP) registrations. The method used to estimate international migration is described in Section 6.

2.6 Migrants tend to be younger than the general population as Table 9 shows. Of in-migrants to Scotland, 47 per cent from the rest of the UK and 67 per cent of those from overseas were aged 16-34 years, yet in the resident population only 24 per cent were in this age group. Only 5 per cent of people coming to Scotland from the rest of the UK and 1 per cent of people entering from overseas were aged 65 and over.

### 3. The Age and Sex Structure of the Population

3.1 The age and sex composition is one of the most important aspects of the population. Changes in different age groups will have different social and economic impacts. For example, increases in the elderly population are likely to place a greater demand on health and social services. Scotland's estimated population is shown by age and sex in Figure 3.

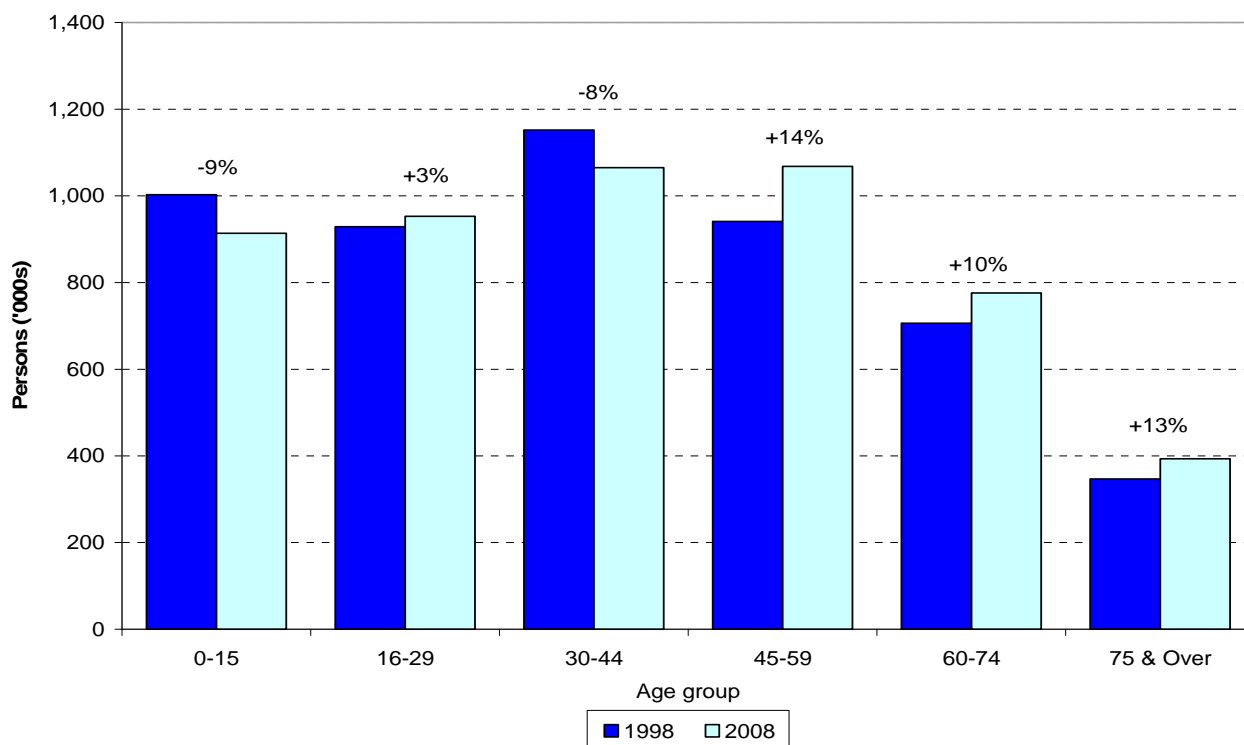
**Figure 3 Estimated population by age and sex, 30 June 2008**



3.2 Among older people, particularly over 75, the higher number of females reflects the longer expectation of life for women, partly as a result of higher rates of male mortality during the Second World War. The two baby booms of 1947 and the 1960s can also be seen with a sharp peak at age 61 and another peak between the ages of around 35 and 50. These baby boomers, along with relatively low fertility rates since the 1960s, are the main reasons why Scotland’s population is likely to age in the future.

3.3 The changing age structure of the population since 1998 is illustrated in [Figure 4](#). The ageing of the population is evident in the rises in the older age groups (14 per cent in the 45-59 age group, 10 per cent in the 60-74 age group and 13 per cent in the 75 and over age group) and the falls in some of the younger age groups (-9 per cent in the under 16 age group and -8 per cent in the 30-44 age group).

**Figure 4 The changing age structure of Scotland's population, 1998-2008**



## 4. Results for Administrative Areas

### 4.1 Population Change 2007-2008

4.1.1 Population estimates for each Council and NHS Board area, together with details of the components of population change (births, deaths, net migration and other changes) for the period mid-2007 to mid-2008, are shown in [Table 2](#), [Table 3](#) and [Table 4](#).

4.1.2 Among Council areas, East Lothian had the largest percentage population increase at +1.8 per cent followed by Perth & Kinross (+1.4 per cent), Midlothian (+1.3 per cent) and Clackmannanshire (+1.2 per cent). Seven councils experienced a decrease in population although the decreases were mainly very small. These were Argyll & Bute (-0.9 per cent), Eilean Siar and Inverclyde (both -0.4 per cent), West Dunbartonshire (-0.2 per cent), East Dunbartonshire (-0.1 per cent) and East Renfrewshire and South Ayrshire (where the population fell by less than 0.1 per cent).

4.1.3 Of NHS Board areas, Lothian (+1.0 per cent), Borders (+0.9 per cent) and Grampian (+0.8 per cent) had the largest percentage population increases. The only NHS Board area to have experienced a decline in population was Western Isles (-0.4 per cent).

### 4.2 Components of migration 2007-2008

4.2.1 For most areas, the main cause of population change in the year to mid-2008 was migration. [Table 5](#) shows, for this period, migration flows to and from each Council and NHS Board area for people moving within Scotland (i.e. between one Council area and another or between one NHS Board area and another), people moving between Scotland and the rest of the UK and people moving between Scotland and overseas. In [Table 5](#) and in [Figure 5a](#) and [Figure 5b](#), movements to and from the armed forces are included in the rest of UK figures.

## **In- and out-migration**

4.2.2 As [Figure 5a](#) shows, different Councils attract migrants from different areas. In some Council areas (such as East Renfrewshire, East Dunbartonshire, West Dunbartonshire, Midlothian and South Lanarkshire) most of the migrants came from other Council areas within Scotland. For example, of the 3,298 people estimated to have arrived in East Renfrewshire, 2,855 (87 per cent) were from elsewhere in Scotland, 333 (10 per cent) from the rest of the UK and 110 (3 per cent) were from overseas.

4.2.3 In other areas (such as Dumfries & Galloway, Shetland, Moray and Highland) more than half of the migrants entering the area came from outside Scotland with most of these coming from the rest of the UK. In some cases this will be partly due to movements to and from the armed forces.

4.2.4 In the city authorities, particularly City of Edinburgh, Glasgow City and Aberdeen City, the pattern was again for high proportions of migrants to come from outside Scotland. In Aberdeen City and Glasgow City most of these were from overseas whilst in City of Edinburgh just over half were from the rest of the UK.

4.2.5 As [Figure 5b](#) shows, there are also differences in the destinations of people migrating out of Council areas. Often the area to which most out-migrants moved was the same area from which most in-migrants had arrived. For example most of the migrants leaving East Dunbartonshire, East Renfrewshire and Midlothian moved elsewhere in Scotland and, as described above, most of the migrants arriving in these Council areas came from elsewhere in Scotland.

## **Net migration**

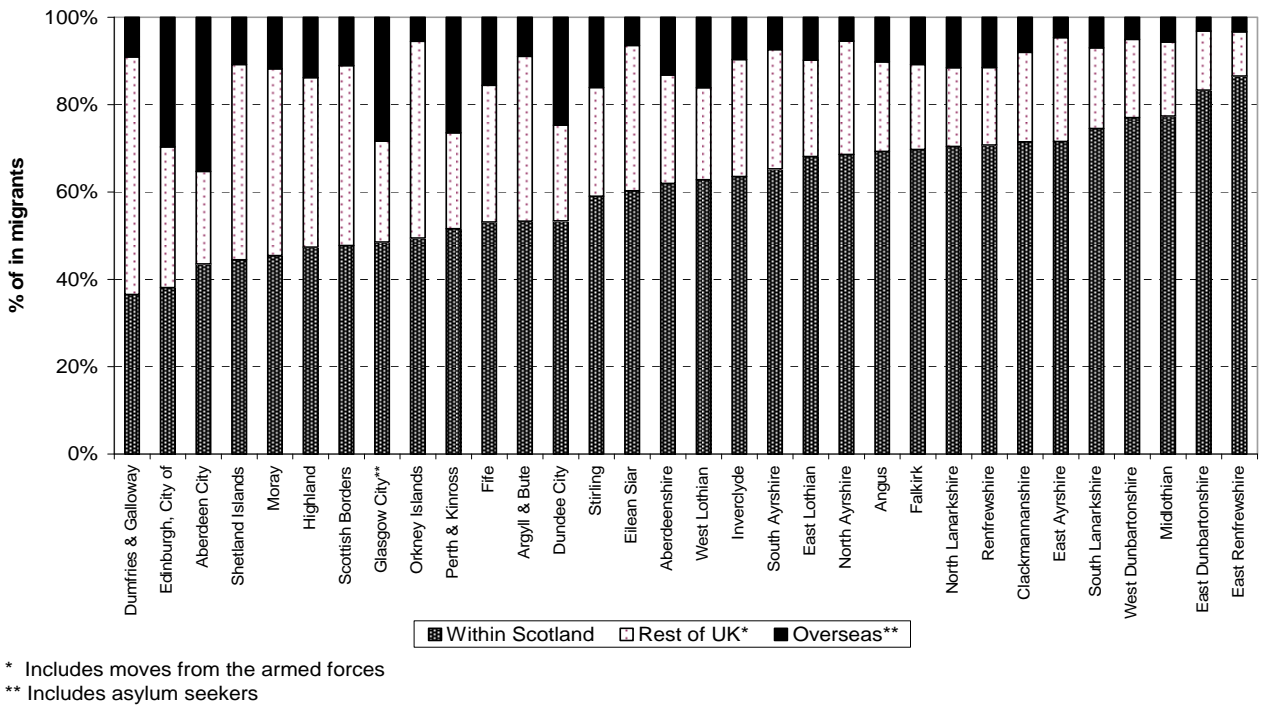
4.2.8 As [Table 5](#) shows, as a result of these different patterns of both in- and out-migration, some councils experienced net gains from one region but net losses to another whilst others experienced gains from all areas.

4.2.9 In some Council areas (such as Aberdeenshire, East Lothian, Highland, Perth & Kinross and West Lothian) more people arrived from each of the regions (within Scotland, the rest of the UK and overseas) than left. Even amongst these councils there were different patterns, with Aberdeenshire and East Lothian mostly gaining from within Scotland, Highland and West Lothian from the rest of the UK and Perth & Kinross from overseas.

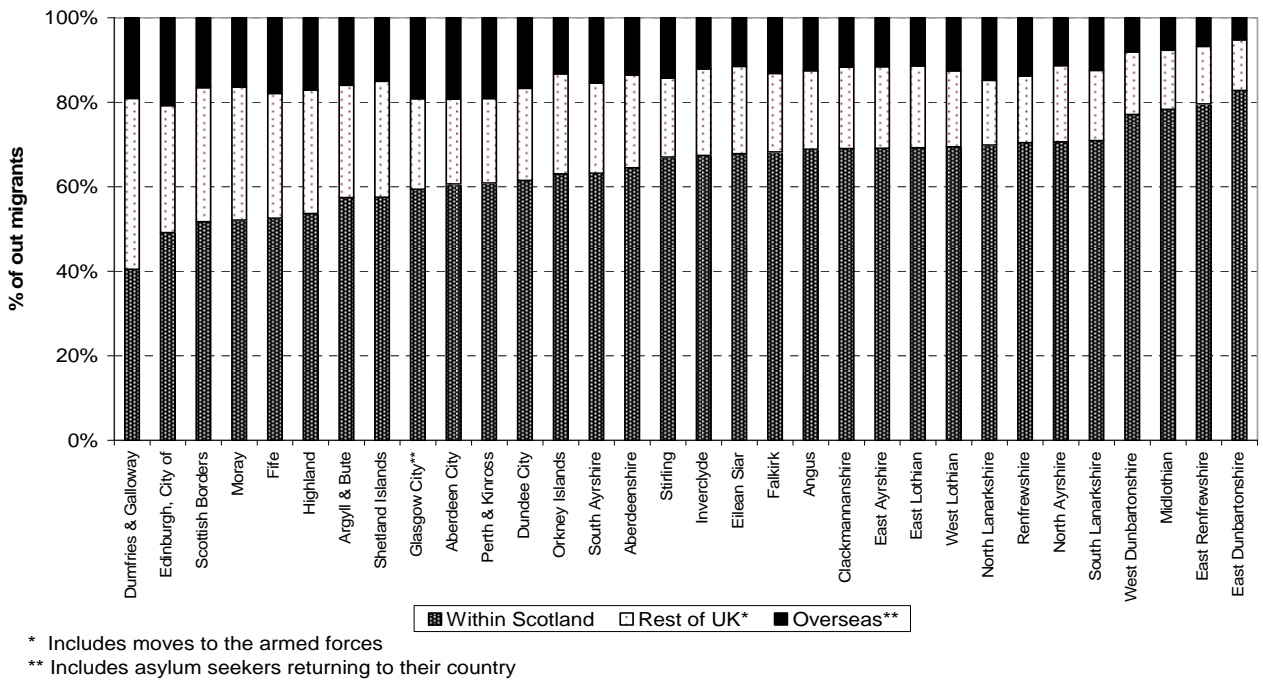
4.2.10 Other Council areas (such as East, North and South Ayrshire) had net gains from other areas within Scotland and from the rest of the UK but lost more than they gained from overseas.

4.2.11 The city authorities lost migrants to other areas of Scotland but gained from the rest of the UK and, in particular, overseas. For example, there was a net gain of over 850 migrants in Aberdeen City - comprising a net loss of over 1,700 people to the rest of Scotland and net gains of over 300 people from the rest of the UK and of more than 2,200 people from overseas.

**Figure 5a Origin of in-migrants by Council areas, 2007–2008, (ranked by increasing percentage of migrants from within Scotland)**



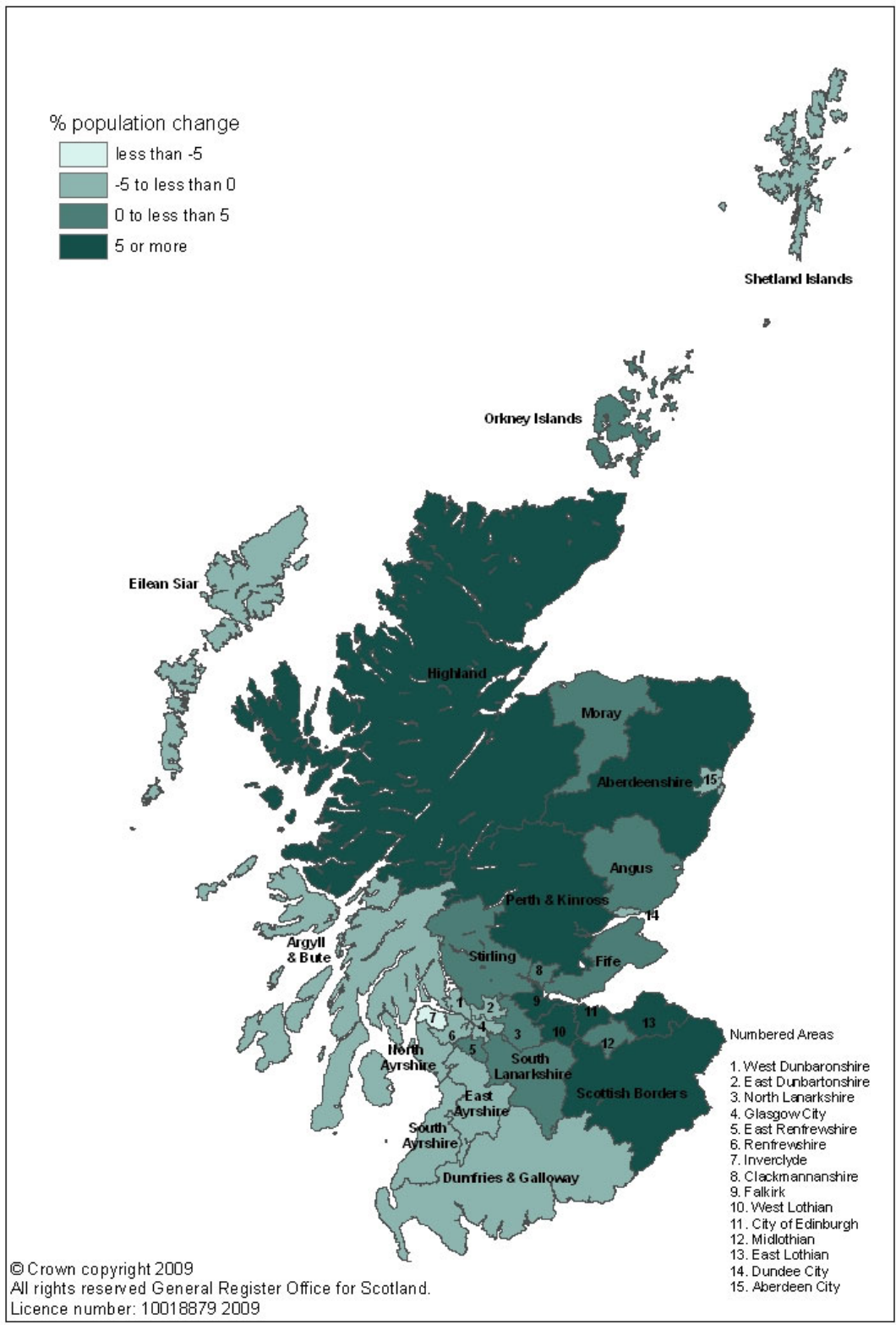
**Figure 5b Destination of out-migrants by Council areas, 2007–2008 (ranked by increasing percentage of migrants to within Scotland)**



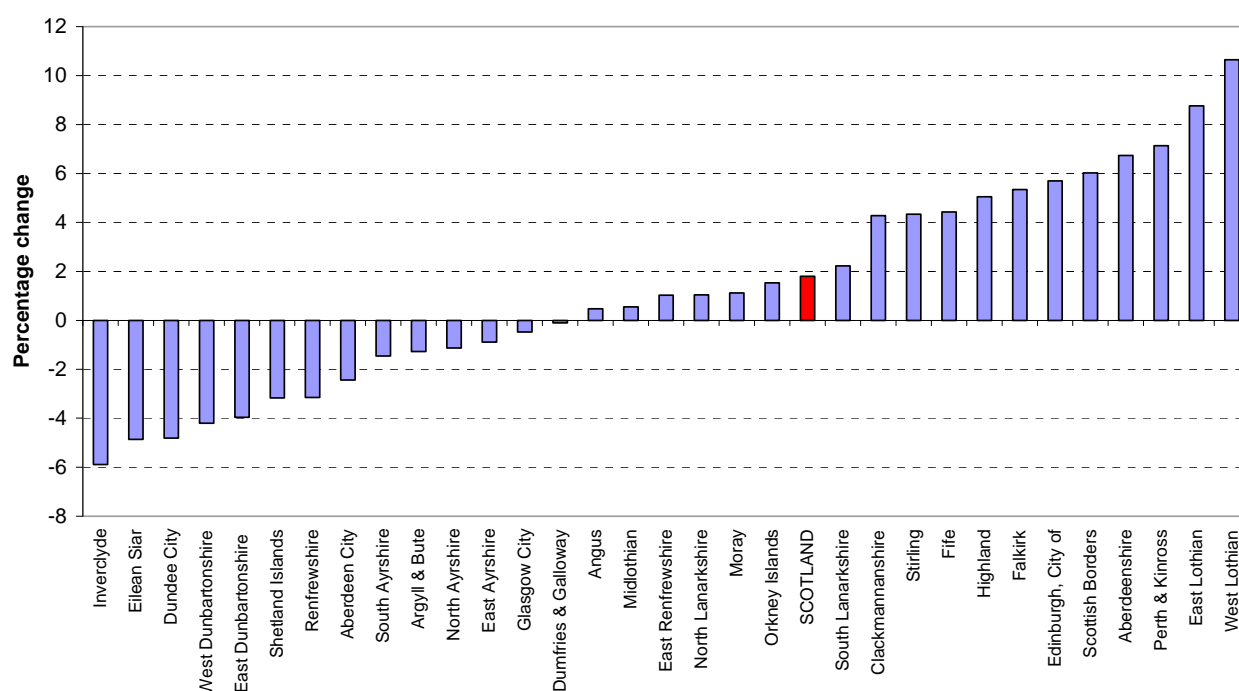
### 4.3 Population Change 1998-2008

4.3.1 Details of population changes in administrative areas between 1998 and 2008 are shown in [Table 7](#). These changes are illustrated for Council areas in the map at [Figure 6a](#) and the chart at [Figure 6b](#) which both show the percentage change in the population of Council areas between 1998 and 2008.

**Figure 6a Percentage change in population, Council areas, 1998-2008 (Map)**



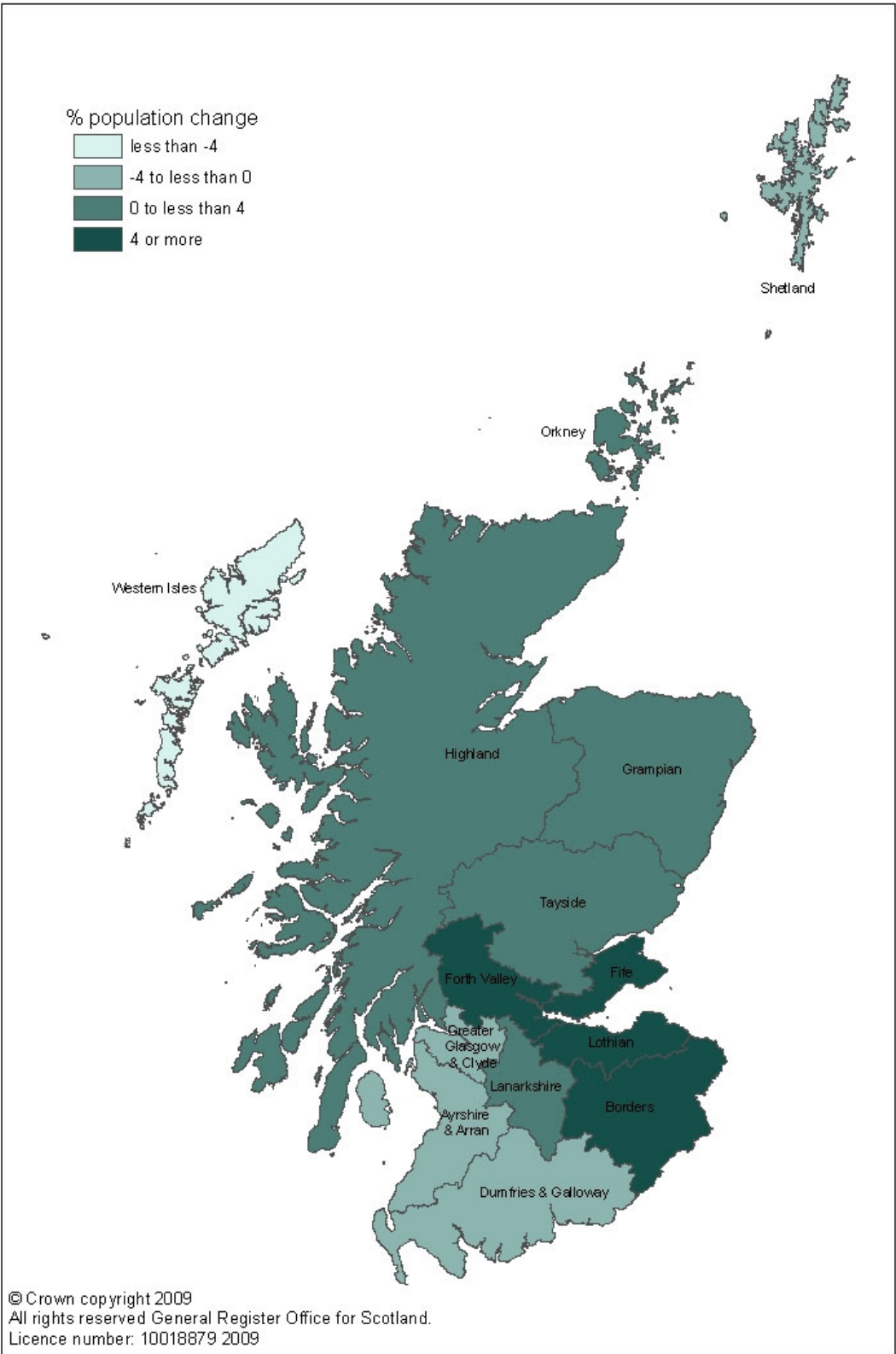
**Figure 6b Percentage change in population, Council areas, 1998-2008 (Chart)**



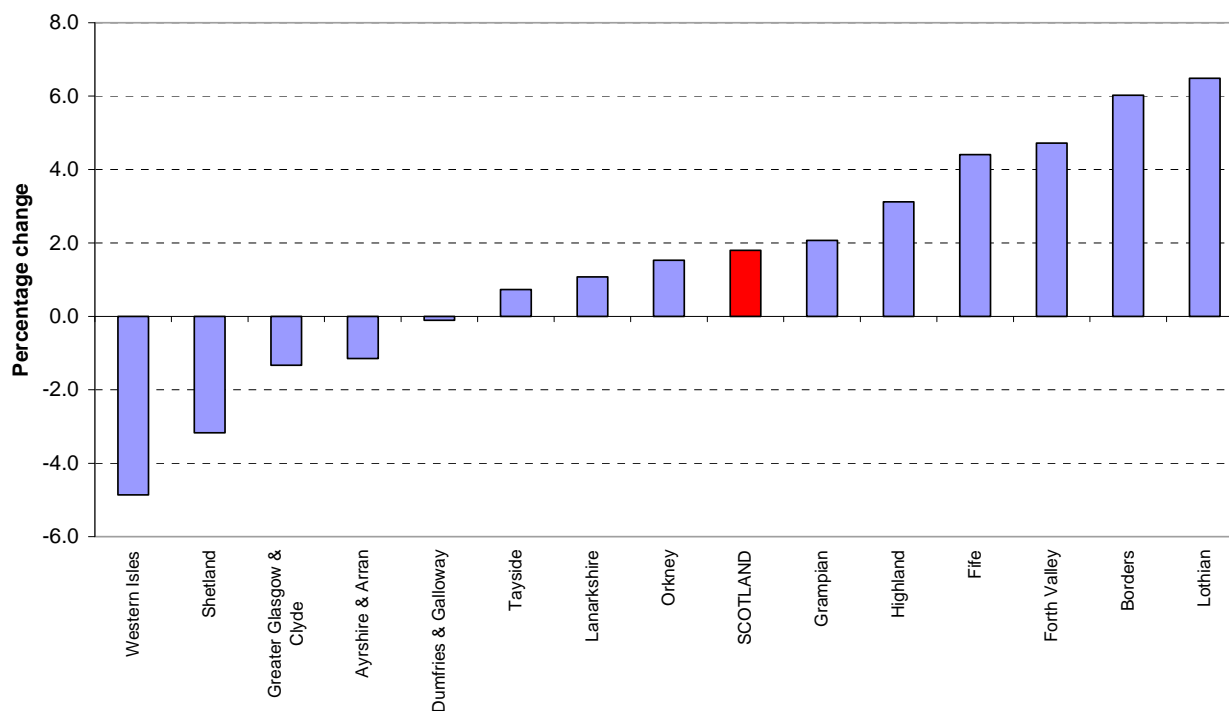
4.3.2 Between 1998 and 2008, the Council areas with the largest percentage population growth were West Lothian (+10.6 per cent), East Lothian (+8.8 per cent), Perth & Kinross (+7.1 per cent) and Aberdeenshire (+6.7 per cent). The largest absolute increase in numbers was in the City of Edinburgh (+25,410). Inverclyde (-5.9 per cent), Eilean Siar (-4.9 per cent), Dundee City (-4.8 per cent) and West Dunbartonshire (-4.2 per cent) showed the greatest percentage decreases during this period. The largest absolute decrease in numbers was in Dundee City (-7,210).

4.3.3 The map at [Figure 7a](#) and the chart at [Figure 7b](#) show the percentage change in population between 1998 and 2008 for each NHS Board area. The largest percentage increases in population were in Lothian (+6.5 per cent), Borders (+6.0 per cent) and Forth Valley (+4.7 per cent). The greatest percentage decreases occurred in the Western Isles (-4.9 per cent) and Shetland (-3.2 per cent).

Figure 7a Percentage change in population, NHS Board areas, 1998-2008 (Map)



**Figure 7b Percentage change in population, NHS Board areas, 1998-2008 (Chart)**



#### 4.4 Sex and Age Structure of Administrative Areas in Scotland

4.4.1 There were more women than men in Scotland in mid-2008 and this is the case for all Council areas other than Moray and Shetland Islands and for all NHS Board areas other than Shetland. [Table 8](#) shows the “sex ratio” for each Council and NHS Board area in Scotland. The sex ratio is the male population divided by the female population (e.g. a sex ratio of 0.95 means that for every 100 females there are 95 males). The sex ratio ranged from 0.90 in Dundee City, North Ayrshire and West Dunbartonshire to 1.02 in Moray and Shetland Islands. For the NHS Board areas, the sex ratio ranged from 0.92 in Ayrshire & Arran and Greater Glasgow & Clyde to 1.02 in Shetland.

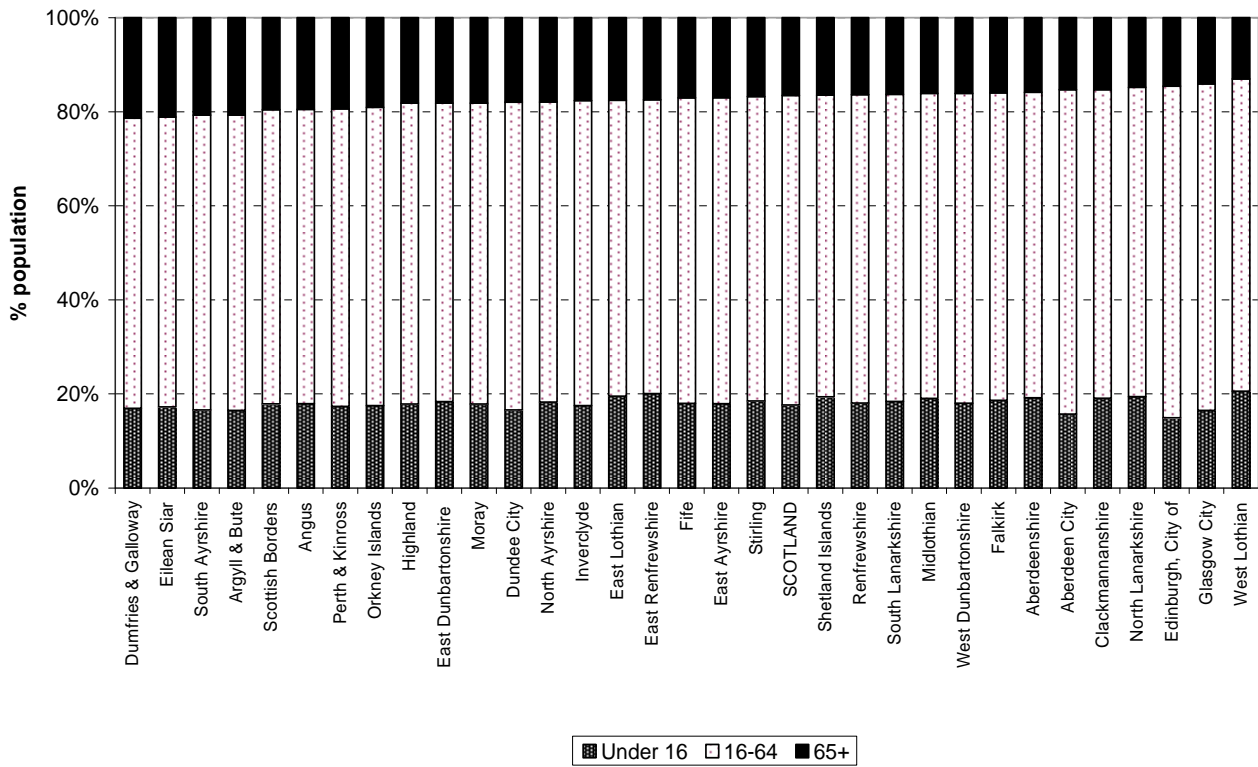
4.4.2 Though the pattern of age distribution is complex, some general themes can be seen from [Table 8](#). The major cities had the highest proportions of men and women of working age<sup>1</sup>. For example, in Edinburgh City 72 per cent of men and 65 per cent of women were of working age and in Glasgow City there were similar results (71 per cent of men and 63 per cent of women). The highest proportions of people of pensionable age<sup>2</sup> tended to be in rural areas such as Dumfries & Galloway (20 per cent of men and 31 per cent of women) and Argyll & Bute (18 per cent of men and 31 per cent of women).

4.4.3 These patterns can also be seen in [Figure 8](#) and [Figure 9](#) which show the proportion of the population aged under 16, 16-64, and 65 and over for Council and NHS Board areas respectively (sorted by proportion of population aged 65 and over).

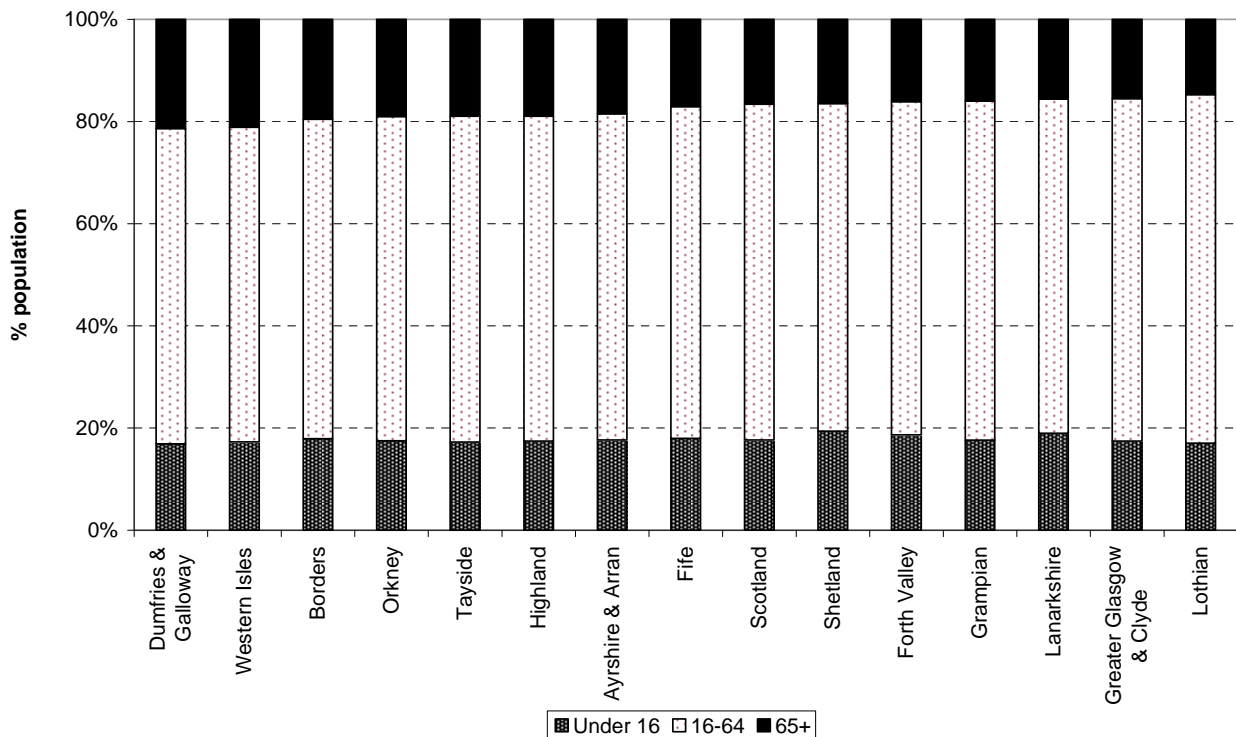
<sup>1</sup> 16-64 for men, 16-59 for women

<sup>2</sup> 65 and over for men, 60 and over for women

**Figure 8 Age structure of Council areas, 30 June 2008 (% under 16, 16-64 and 65+), (ranked by percentage aged 65+)**



**Figure 9 Age structure of NHS Board areas, 30 June 2008 (% under 16, 16-64 and 65+), (ranked by percentage aged 65+)**



## 5. Population Density

5.1 Information on land areas and population densities is shown in [Table 10](#). The mid-2008 population density was 66 persons per square kilometre for Scotland and ranged from 9 persons per square kilometre in the Eilean Siar and Highland Council areas to 3,329 persons per square kilometre in Glasgow City Council area.

**Table 1 Estimated population by age and sex, Scotland: 30 June 2008**

Age	Persons	Males	Females	Age	Persons	Males	Females	Age	Persons	Males	Females
<b>All ages</b>	<b>5,168,500</b>	<b>2,500,205</b>	<b>2,668,295</b>								
0	59,531	30,320	29,211	30	58,887	29,280	29,607	60	69,069	33,773	35,296
1	57,495	29,509	27,986	31	56,967	28,418	28,549	61	74,880	36,483	38,397
2	55,851	28,586	27,265	32	60,340	29,701	30,639	62	57,476	28,132	29,344
3	55,407	28,582	26,825	33	60,954	29,593	31,361	63	54,976	26,549	28,427
4	54,688	28,155	26,533	34	62,124	30,219	31,905	64	55,981	27,057	28,924
<b>0 - 4</b>	<b>282,972</b>	<b>145,152</b>	<b>137,820</b>	<b>30 - 34</b>	<b>299,272</b>	<b>147,211</b>	<b>152,061</b>	<b>60 - 64</b>	<b>312,382</b>	<b>151,994</b>	<b>160,388</b>
5	53,135	27,104	26,031	35	66,269	31,985	34,284	65	54,444	25,805	28,639
6	52,267	26,538	25,729	36	70,556	33,677	36,879	66	50,279	23,694	26,585
7	53,332	26,987	26,345	37	74,682	35,887	38,795	67	47,110	21,947	25,163
8	54,036	27,957	26,079	38	74,310	35,639	38,671	68	48,498	22,583	25,915
9	56,710	29,105	27,605	39	77,210	37,121	40,089	69	47,465	22,098	25,367
<b>5 - 9</b>	<b>269,480</b>	<b>137,691</b>	<b>131,789</b>	<b>35 - 39</b>	<b>363,027</b>	<b>174,309</b>	<b>188,718</b>	<b>65 - 69</b>	<b>247,796</b>	<b>116,127</b>	<b>131,669</b>
10	57,746	29,462	28,284	40	78,861	37,632	41,229	70	46,355	21,475	24,880
11	59,459	30,605	28,854	41	80,430	38,942	41,488	71	44,563	20,277	24,286
12	58,966	30,178	28,788	42	79,682	38,109	41,573	72	43,556	19,622	23,934
13	59,875	30,672	29,203	43	81,970	39,422	42,548	73	41,782	18,599	23,183
14	61,708	31,483	30,225	44	81,945	39,156	42,789	74	39,312	17,269	22,043
<b>10 - 14</b>	<b>297,754</b>	<b>152,400</b>	<b>145,354</b>	<b>40 - 44</b>	<b>402,888</b>	<b>193,261</b>	<b>209,627</b>	<b>70 - 74</b>	<b>215,568</b>	<b>97,242</b>	<b>118,326</b>
15	63,328	32,329	30,999	45	81,183	38,759	42,424	75	37,556	16,273	21,283
16	65,833	33,650	32,183	46	79,931	38,882	41,049	76	37,100	15,801	21,299
17	66,326	34,113	32,213	47	78,558	37,958	40,600	77	35,152	14,737	20,415
18	65,022	33,481	31,541	48	76,644	37,199	39,445	78	32,875	13,408	19,467
19	66,926	34,266	32,660	49	75,769	36,636	39,133	79	30,664	12,363	18,301
<b>15 - 19</b>	<b>327,435</b>	<b>167,839</b>	<b>159,596</b>	<b>45 - 49</b>	<b>392,085</b>	<b>189,434</b>	<b>202,651</b>	<b>75 - 79</b>	<b>173,347</b>	<b>72,582</b>	<b>100,765</b>
20	70,520	36,150	34,370	50	73,967	35,755	38,212	80	27,309	10,836	16,473
21	71,148	35,947	35,201	51	72,105	35,009	37,096	81	25,670	9,955	15,715
22	72,094	36,568	35,526	52	70,105	34,315	35,790	82	24,592	9,240	15,352
23	72,351	36,736	35,615	53	67,599	33,076	34,523	83	21,772	7,997	13,775
24	67,940	34,488	33,452	54	66,801	32,736	34,065	84	20,006	7,154	12,852
<b>20 - 24</b>	<b>354,053</b>	<b>179,889</b>	<b>174,164</b>	<b>50 - 54</b>	<b>350,577</b>	<b>170,891</b>	<b>179,686</b>	<b>80 - 84</b>	<b>119,349</b>	<b>45,182</b>	<b>74,167</b>
25	67,078	33,991	33,087	55	65,479	32,121	33,358	85	17,100	5,736	11,364
26	67,223	33,927	33,296	56	63,239	30,980	32,259	86	15,954	5,205	10,749
27	68,905	35,130	33,775	57	64,433	31,487	32,946	87	14,599	4,649	9,950
28	67,870	34,452	33,418	58	64,993	31,885	33,108	88	13,530	4,193	9,337
29	63,755	32,447	31,308	59	67,057	32,869	34,188	89	8,109	2,376	5,733
<b>25 - 29</b>	<b>334,831</b>	<b>169,947</b>	<b>164,884</b>	<b>55 - 59</b>	<b>325,201</b>	<b>159,342</b>	<b>165,859</b>	<b>85 - 89</b>	<b>69,292</b>	<b>22,159</b>	<b>47,133</b>
								<b>90 &amp; over</b>	<b>31,191</b>	<b>7,553</b>	<b>23,638</b>

**Age group summaries**

	Persons	Males	Females
All aged under 16	913,534	467,572	445,962
All aged under 18	1,045,693	535,335	510,358
All aged 16 & over	4,254,966	2,032,633	2,222,333
All aged 18 & over	4,122,807	1,964,870	2,157,937
All aged 16-29	952,991	485,346	467,645
All aged 30-44	1,065,187	514,781	550,406
All aged 45-64 (M), 45-59 (F)	1,219,857	671,661	548,196
All aged 65 & over (M), 60 & over (F)	1,016,931	360,845	656,086
All aged 75 & over	393,179	147,476	245,703

**Table 2 Estimated population by sex, single year of age and administrative area: 30 June 2008**

Area	PERSONS																																	
	All Ages	Age																																
	0	1	2	3	4	5	6	7	8	9	10	11	12	13	14	15	16	17	18	19	20	21	22	23	24	25	26	27	28	29	30			
<b>SCOTLAND</b>	<b>5,168,500</b>	<b>59,531</b>	<b>57,495</b>	<b>55,851</b>	<b>55,407</b>	<b>54,688</b>	<b>53,135</b>	<b>52,267</b>	<b>53,332</b>	<b>54,036</b>	<b>56,710</b>	<b>57,746</b>	<b>59,459</b>	<b>58,966</b>	<b>59,875</b>	<b>61,708</b>	<b>63,328</b>	<b>65,833</b>	<b>66,326</b>	<b>65,022</b>	<b>66,926</b>	<b>70,520</b>	<b>71,148</b>	<b>72,094</b>	<b>72,351</b>	<b>67,940</b>	<b>67,078</b>	<b>67,223</b>	<b>68,905</b>	<b>67,870</b>	<b>63,755</b>	<b>58,887</b>		
<b>Council areas</b>																																		
Aberdeen City	210,400	2,517	2,327	2,127	2,093	1,917	1,999	1,925	1,935	1,919	2,009	1,950	2,011	1,945	2,082	2,138	2,206	2,268	2,384	2,572	3,143	3,612	3,670	3,820	3,679	3,584	3,858	3,808	3,727	3,995	3,413	3,175		
Aberdeenshire	241,460	2,751	2,825	2,808	2,761	2,704	2,674	2,647	2,702	2,878	2,996	2,955	3,058	3,019	3,079	3,241	3,237	3,231	3,184	2,891	2,677	2,570	2,617	2,497	2,430	2,302	2,088	2,111	2,300	2,238	2,248	2,271		
Angus	110,310	1,183	1,201	1,128	1,185	1,183	1,176	1,139	1,194	1,195	1,223	1,286	1,339	1,304	1,304	1,373	1,372	1,427	1,235	1,191	1,121	1,134	1,164	1,156	1,039	987	989	983	973	973	1,021			
Argyll & Bute	90,500	773	796	752	803	876	790	863	820	892	1,024	999	1,085	1,084	1,070	1,144	1,178	1,179	1,129	1,105	1,037	944	926	997	951	880	852	719	810	806	685	654		
Clackmannanshire	50,480	673	581	610	579	535	519	577	568	566	585	593	624	640	631	627	719	709	673	620	566	634	655	622	566	594	550	550	587	583	492	573		
Dumfries & Galloway	148,580	1,487	1,543	1,491	1,458	1,404	1,409	1,332	1,426	1,428	1,526	1,730	1,628	1,783	1,798	1,885	1,829	1,893	1,868	1,651	1,531	1,530	1,533	1,454	1,441	1,331	1,171	1,236	1,300	1,266	1,265	1,175		
Dundee City	142,470	1,763	1,573	1,478	1,580	1,468	1,426	1,355	1,336	1,297	1,328	1,455	1,557	1,495	1,431	1,476	1,653	1,621	1,935	2,126	2,372	2,714	2,752	2,845	2,758	2,333	2,210	2,206	2,334	2,315	2,141	1,587		
East Ayrshire	119,920	1,331	1,342	1,302	1,259	1,309	1,273	1,193	1,276	1,255	1,274	1,367	1,356	1,367	1,450	1,530	1,627	1,669	1,641	1,575	1,591	1,522	1,544	1,527	1,436	1,303	1,278	1,308	1,274	1,258	1,267	1,208		
East Dunbartonshire	104,720	978	945	1,033	1,030	1,084	1,127	1,107	1,143	1,159	1,288	1,385	1,300	1,398	1,357	1,449	1,447	1,516	1,509	1,380	1,302	1,217	1,218	1,272	1,345	1,149	1,147	1,035	997	951	945	754		
East Lothian	96,100	1,202	1,163	1,185	1,111	1,152	1,005	1,067	1,047	1,144	1,181	1,215	1,315	1,231	1,209	1,257	1,273	1,379	1,304	1,227	1,243	1,071	1,101	1,015	1,026	799	863	857	766	745	724	755		
East Renfrewshire	89,220	900	952	954	1,044	1,076	1,057	1,045	1,069	1,125	1,172	1,224	1,241	1,205	1,296	1,303	1,255	1,278	1,195	1,187	1,203	1,081	1,036	1,038	1,002	826	787	795	769	726	675			
Edinburgh, City of	471,650	5,400	4,801	4,581	4,263	4,285	4,158	4,051	4,016	4,126	4,251	4,302	4,201	4,449	4,419	4,446	4,669	4,899	5,230	5,744	6,859	7,837	8,578	9,133	9,820	9,477	9,874	10,251	10,181	10,178	9,093	8,117		
Eilean Siar	26,200	256	276	253	237	276	273	254	246	277	291	272	324	331	311	329	318	367	313	296	244	238	228	217	224	206	188	195	231	244	261	197		
Falkirk	151,570	1,924	1,838	1,757	1,788	1,687	1,698	1,566	1,699	1,664	1,746	1,788	1,835	1,700	1,819	1,798	1,917	1,903	2,111	1,894	1,805	2,001	1,706	1,671	1,778	1,534	1,639	1,850	1,888	1,865	1,870	1,809		
Fife	361,890	4,292	4,079	4,015	3,923	3,909	3,794	3,662	3,905	3,791	4,054	4,028	4,115	4,159	4,336	4,430	4,549	4,561	4,626	4,654	5,138	5,501	5,374	5,193	4,756	4,288	4,060	4,005	4,135	4,265	3,909	3,593		
Glasgow City	584,240	7,182	6,746	6,423	6,262	5,966	5,693	5,496	5,576	5,532	5,555	5,733	5,940	5,727	6,036	6,012	6,451	6,928	6,976	7,651	8,974	9,959	10,424	10,899	11,380	11,001	11,604	11,311	11,640	11,379	10,649	9,626		
Highland	219,400	2,411	2,313	2,339	2,271	2,317	2,229	2,203	2,365	2,256	2,521	2,584	2,583	2,641	2,635	2,694	2,752	2,854	2,778	2,605	2,229	2,130	2,138	2,181	2,235	2,123	1,941	2,079	2,406	2,292	2,353	2,105		
Inverclyde	80,780	871	857	826	890	862	820	758	818	833	899	906	973	968	961	961	966	1,092	1,078	1,066	1,038	1,117	1,057	1,140	1,089	993	962	913	943	968	825	810		
Midlothian	80,560	955	930	945	913	914	904	837	946	954	1,027	987	1,016	969	1,003	1,034	1,005	1,174	1,169	1,039	987	1,071	1,007	1,027	911	879	838	874	799	787	810	706		
Moray	87,770	1,001	965	891	898	827	837	790	891	916	989	1,055	1,065	1,098	1,108	1,143	1,180	1,236	1,173	1,066	1,068	985	1,017	928	993	936	846	825	789	844	888	799		
North Ayrshire	135,920	1,522	1,509	1,508	1,451	1,456	1,480	1,431	1,434	1,436	1,428	1,568	1,640	1,654	1,728	1,790	1,764	1,825	1,917	1,719	1,701	1,798	1,698	1,615	1,589	1,410	1,463	1,471	1,485	1,361	1,340	1,260		
North Lanarkshire	325,520	4,133	4,073	3,869	3,965	3,939	3,784	3,780	3,718	3,695	4,012	3,977	4,164	4,058	3,899	4,118	4,051	4,397	4,338	4,174	4,193	4,199	4,221	4,297	4,426	4,166	4,125	4,225	4,186	4,267	3,936	3,660		
Orkney Islands	19,890	205	198	205	202	180	186	202	161	196	233	205	263	247	271	281	246	293	263	254	194	182	182	178	195	173	165	159	192	185	216	186		
Perth & Kinross	144,180	1,444	1,433	1,333	1,424	1,441	1,431	1,430	1,543	1,522	1,581	1,663	1,721	1,626	1,707	1,830	1,837	1,869	1,826	1,550	1,550	1,637	1,806	1,915	1,876	1,858	1,630	1,572	1,563	1,399	1,381	1,317		
Renfrewshire	169,800	1,990	1,898	1,886	1,916	1,882	1,787	1,797	1,847	1,792	1,864	1,909	2,011	1,938	1,974	2,055	2,140	2,211	2,234	2,150	2,046	2,179	2,216	2,196	2,205	2,082	2,129	2,049	2,245	2,086	1,878	1,858		
Scottish Borders	112,430	1,175	1,183	1,162	1,204	1,204	1,180	1,230	1,183	1,263	1,233	1,246	1,339	1,385	1,371	1,330	1,438	1,423	1,433	1,331	1,125	1,152	1,054	1,068	1,003	943	918	878	961	950	922	896		
Shetland Islands	21,980	238	260	265	229	236	259	234	245	291	250	282	301	274	298	284	315	340	310	272	216	193	212	211	237	201	186	205	245	244	269	224		
South Ayrshire	111,670	1,089	1,074	1,039	1,112	1,066	1,018	1,101	1,092	1,097	1,187	1,231	1,256	1,234	1,236	1,338	1,360	1,415	1,353	1,397	1,266	1,300	1,315	1,304	1,270	1,234	1,041	1,039	1,159	997	1,083	987		
South Lanarkshire	310,090	3,584	3,522	3,547	3,414	3,419	3,254	3,325	3,255	3,503	3,620	3,554	3,800	3,659	3,667	3,965	3,964	4,124	4,044	3,886	3,639	3,900	3,799	3,903	4,036	3,853	3,615	3,631	3,827	3,786	3,451	3,333		
Stirling	88,350	854	945	912	953	994	981	889	991	981	1,113	1,092	1,142	1,100	1,119	1,118	1,138	1,223	1,390	1,558	1,511	1,795	1,484	1,263	1,104	1,075	929	910	903	810	783	699		
West Dunbartonshire	90,940	1,142	1,078	1,033	991	954	927	914	901	981	964	1,013	1,082	1,049	1,073	1,105	1,175	1,225	1,206	1,226	1,204	1,269	1,234	1,314	1,375	1,276	1,216	1,182	1,221	1,029	1,006	946		
West Lothian	169,510	2,305	2,269	2,194	2,198	2,166	1,987	2,067	1,984	2,072	2,286	2,192	2,174	2,229	2,197	2,224	2,297	2,269	2,309	2,123	2,083	2,061	2,212	2,165	2,023	1,916	1,879	1,993	2,033	2,014	1,953	1,911		
<b>NHS Board areas</b>																																		
Ayrshire & Arran	367,510	3,942	3,925	3,849	3,822	3,831	3,771	3,725	3,802	3,788	3,889	4,166	4,252	4,255	4,414	4,658	4,751	4,909	4,911	4,691	4,558	4,620	4,557	4,446	4,295	3,947	3,782	3,818	3,918	3,616	3,690	3,455		
Borders	112,430	1,175	1,183	1,162	1,204	1,204	1,180	1,230	1,183	1,263	1,233	1,246	1,339	1,385	1,371	1,330	1,438	1,423	1,433	1,331	1,125	1,152	1,054	1,068	1,003	943	918	878	961	950	922	896		
Dumfries & Galloway	148,580	1,487	1,543	1,491	1,458	1,404	1,409	1,332	1,426	1,428	1,526	1,730	1,628	1,783	1,798	1,885	1,829	1,89																

Table 2 (continued)

Area	Age																													MALES		
	All Ages	0	1	2	3	4	5	6	7	8	9	10	11	12	13	14	15	16	17	18	19	20	21	22	23	24	25	26	27		28	29
<b>SCOTLAND</b>	<b>2,500,205</b>	<b>30,320</b>	<b>29,509</b>	<b>28,586</b>	<b>28,582</b>	<b>28,155</b>	<b>27,104</b>	<b>26,538</b>	<b>26,987</b>	<b>27,957</b>	<b>29,105</b>	<b>29,462</b>	<b>30,605</b>	<b>30,178</b>	<b>30,672</b>	<b>31,483</b>	<b>32,329</b>	<b>33,650</b>	<b>34,113</b>	<b>33,481</b>	<b>34,266</b>	<b>36,150</b>	<b>35,947</b>	<b>36,568</b>	<b>36,736</b>	<b>34,488</b>	<b>33,991</b>	<b>33,927</b>	<b>35,130</b>	<b>34,452</b>	<b>32,447</b>	<b>29,280</b>
<b>Council areas</b>																																
Aberdeen City	103,972	1,281	1,168	1,086	1,022	982	1,037	964	987	1,036	1,039	1,031	1,064	1,027	1,079	1,099	1,144	1,190	1,151	1,187	1,432	1,584	1,655	1,760	1,796	1,854	1,924	1,971	2,112	2,251	1,924	1,797
Aberdeenshire	119,820	1,453	1,463	1,464	1,430	1,406	1,368	1,326	1,380	1,545	1,526	1,569	1,616	1,557	1,567	1,657	1,667	1,581	1,657	1,517	1,427	1,362	1,420	1,345	1,305	1,240	1,129	1,131	1,169	1,128	1,107	1,103
Angus	53,390	579	627	578	605	616	589	582	604	622	645	653	685	653	646	729	705	733	817	660	614	587	580	646	620	566	486	500	512	489	526	465
Argyll & Bute	45,057	404	406	376	428	450	416	422	413	455	499	521	571	528	576	590	563	591	598	571	618	554	529	618	545	553	491	438	484	485	382	365
Clackmannanshire	24,676	343	298	310	307	274	267	319	277	281	322	293	322	321	323	308	358	360	334	329	297	310	352	355	310	331	301	272	306	296	239	263
Dumfries & Galloway	71,926	744	820	756	757	711	719	695	750	737	802	852	811	944	905	974	893	962	952	909	830	830	810	772	771	646	602	581	662	590	581	557
Dundee City	67,540	873	792	747	831	759	751	690	683	649	673	751	793	772	761	773	844	782	916	986	1,120	1,228	1,274	1,365	1,423	1,181	1,167	1,092	1,172	1,231	1,084	832
East Ayrshire	58,003	723	699	671	660	674	646	574	655	628	632	748	723	702	786	758	831	841	791	817	844	823	792	774	723	665	657	631	618	605	608	599
East Dunbartonshire	50,473	527	469	525	546	577	590	568	575	611	663	750	654	736	698	767	767	751	815	758	726	664	664	666	708	608	597	570	570	526	517	367
East Lothian	45,968	620	590	626	592	569	523	543	504	583	606	597	650	634	618	645	631	715	659	613	568	605	602	526	515	396	430	376	391	359	367	344
East Renfrewshire	42,660	465	503	467	511	557	540	539	554	588	627	658	616	622	686	656	616	671	615	648	671	577	580	542	554	569	440	412	429	422	331	339
Edinburgh, City of	227,922	2,718	2,461	2,436	2,218	2,236	2,172	2,110	2,037	2,134	2,139	2,171	2,275	2,282	2,311	2,256	2,457	2,527	2,691	2,816	3,400	3,751	4,002	4,267	4,664	4,464	4,778	5,102	5,019	5,092	4,649	4,068
Eilean Siar	12,881	145	138	126	120	127	140	122	111	154	147	135	156	161	152	156	170	191	168	166	142	128	145	133	135	97	115	94	100	119	127	99
Falkirk	73,367	927	948	885	918	872	863	825	843	878	875	916	975	856	911	921	995	988	1,111	999	984	1,069	890	860	840	760	742	926	964	940	866	880
Fife	174,643	2,208	2,071	2,024	1,986	2,023	1,944	1,854	1,979	2,022	2,120	1,933	2,109	2,150	2,186	2,215	2,270	2,368	2,391	2,393	2,499	2,778	2,632	2,678	2,504	2,199	2,042	2,108	2,068	2,133	1,888	1,726
Glasgow City	281,709	3,644	3,369	3,318	3,258	3,098	2,848	2,800	2,852	2,838	2,812	2,913	3,038	2,967	3,095	3,110	3,277	3,535	3,568	3,909	4,389	5,028	5,170	5,441	5,647	5,421	5,820	5,658	5,916	5,752	5,601	5,043
Highland	107,636	1,251	1,192	1,195	1,183	1,165	1,132	1,127	1,236	1,175	1,352	1,345	1,355	1,315	1,349	1,370	1,361	1,471	1,465	1,305	1,231	1,217	1,183	1,186	1,209	1,167	991	1,016	1,226	1,139	1,213	1,040
Inverclyde	38,592	481	456	419	475	443	421	385	415	437	452	493	500	483	488	448	502	570	575	536	575	578	552	598	546	514	491	445	492	489	424	416
Midlothian	38,297	457	482	464	478	485	480	433	461	460	487	504	492	497	513	528	515	598	598	531	544	547	530	518	480	428	444	431	363	374	393	319
Moray	44,404	516	507	485	446	421	436	434	451	504	515	549	534	561	577	600	594	636	648	574	623	552	580	558	581	537	469	467	464	516	484	440
North Ayrshire	64,448	771	789	781	757	741	767	717	705	736	709	778	836	834	886	910	941	937	999	900	894	935	915	818	775	662	733	722	749	633	642	581
North Lanarkshire	156,516	2,150	2,107	1,992	2,053	2,026	1,917	1,932	1,876	1,885	2,097	1,990	2,121	2,078	1,998	2,141	2,075	2,294	2,228	2,165	2,105	2,201	2,113	2,131	2,183	2,116	2,127	2,146	2,088	2,127	1,961	1,754
Orkney Islands	9,789	96	109	96	99	96	87	91	80	94	137	115	145	141	130	125	102	145	140	136	118	103	90	93	110	91	93	79	98	93	102	88
Perth & Kinross	70,394	768	727	656	739	760	733	743	748	803	819	880	853	790	849	937	926	1,003	939	853	864	905	987	987	969	1,009	915	835	871	938	756	695
Renfrewshire	81,137	993	977	983	951	946	927	892	923	891	955	976	1,090	967	1,018	1,053	1,126	1,083	1,164	1,114	1,014	1,125	1,131	1,085	1,150	1,041	1,056	1,049	1,157	1,021	922	879
Scottish Borders	54,451	567	580	619	620	626	596	604	621	619	648	608	705	704	694	672	723	727	712	667	600	592	524	553	522	469	448	413	498	499	449	445
Shetland Islands	11,099	123	134	123	135	126	133	123	117	155	116	142	149	136	149	145	168	186	154	143	120	108	127	123	143	107	101	116	137	130	127	111
South Ayrshire	53,381	557	546	518	540	537	520	575	562	603	600	617	627	615	624	646	696	710	701	733	681	665	660	678	666	620	565	528	571	521	576	442
South Lanarkshire	148,371	1,799	1,847	1,767	1,740	1,743	1,599	1,667	1,616	1,793	1,814	1,810	1,938	1,890	1,859	1,999	2,018	2,110	2,105	2,060	1,892	2,075	1,968	2,003	2,075	1,941	1,843	1,850	1,884	1,905	1,734	1,557
Stirling	42,189	435	498	452	497	524	501	463	491	494	593	573	579	565	562	577	577	588	661	798	731	908	718	650	560	599	491	445	444	338	386	286
West Dunbartonshire	43,144	543	563	527	526	497	468	437	464	483	498	518	567	560	533	599	593	655	623	626	616	659	665	657	681	646	622	564	608	487	505	449
West Lothian	82,350	1,159	1,173	1,114	1,154	1,088	974	982	1,017	1,064	1,186	1,073	1,056	1,130	1,143	1,119	1,224	1,151	1,167	1,062	1,097	1,102	1,107	1,092	1,026	991	876	959	988	1,024	976	931
<b>NHS Board areas</b>																																
Ayrshire & Arran	175,832	2,051	2,034	1,970	1,957	1,952	1,933	1,866	1,922	1,967	1,941	2,143	2,186	2,151	2,296	2,314	2,468	2,488	2,491	2,450	2,419	2,423	2,367	2,270	2,164	1,947	1,955	1,881	1,938	1,759	1,826	1,622
Borders	54,451	567	580	619	620	626	596	604	621	619	648	608	705	704	694	672	723	727	712	667	600	592	524	553	522	469	448	413	498	499	449	445

Table 2 (continued)

FEMALES

Area	All Ages	Age																																
		0	1	2	3	4	5	6	7	8	9	10	11	12	13	14	15	16	17	18	19	20	21	22	23	24	25	26	27	28	29	30		
<b>SCOTLAND</b>	<b>2,668,295</b>	<b>29,211</b>	<b>27,986</b>	<b>27,265</b>	<b>26,825</b>	<b>26,533</b>	<b>26,031</b>	<b>25,729</b>	<b>26,345</b>	<b>26,079</b>	<b>27,605</b>	<b>28,284</b>	<b>28,854</b>	<b>28,788</b>	<b>29,203</b>	<b>30,225</b>	<b>30,999</b>	<b>32,183</b>	<b>32,213</b>	<b>31,541</b>	<b>32,660</b>	<b>34,370</b>	<b>35,201</b>	<b>35,526</b>	<b>35,615</b>	<b>33,452</b>	<b>33,087</b>	<b>33,296</b>	<b>33,775</b>	<b>33,418</b>	<b>31,308</b>	<b>29,607</b>		
<b>Council areas</b>																																		
Aberdeen City	106,428	1,236	1,159	1,041	1,071	935	962	961	948	883	970	919	947	918	1,003	1,039	1,062	1,078	1,233	1,385	1,711	2,028	2,015	2,060	1,883	1,730	1,934	1,837	1,615	1,744	1,489	1,378		
Aberdeenshire	121,640	1,298	1,362	1,344	1,331	1,298	1,306	1,321	1,322	1,333	1,470	1,386	1,442	1,462	1,512	1,584	1,570	1,650	1,527	1,374	1,250	1,208	1,197	1,152	1,125	1,062	959	980	1,131	1,110	1,141	1,168		
Angus	56,920	604	574	550	580	567	587	557	590	573	578	633	654	651	658	644	667	729	610	575	577	534	554	518	536	473	501	489	471	484	447	556		
Argyll & Bute	45,443	369	390	376	375	426	374	441	407	437	525	478	514	556	494	554	615	588	531	534	419	390	397	379	406	327	361	281	326	321	303	289		
Clackmannanshire	25,804	330	283	300	272	261	252	258	291	285	263	300	302	319	308	319	361	349	339	291	269	324	303	267	256	263	249	278	281	287	253	310		
Dumfries & Galloway	76,654	743	723	735	701	693	690	637	676	691	724	878	817	839	893	911	936	931	916	742	701	700	723	682	670	685	569	655	638	676	684	618		
Dundee City	74,930	890	781	731	749	709	675	665	653	648	655	704	764	723	670	703	809	839	1,019	1,140	1,252	1,486	1,478	1,480	1,335	1,152	1,043	1,114	1,162	1,084	1,057	755		
East Ayrshire	61,917	608	643	631	599	635	627	619	621	627	642	619	633	665	664	772	796	828	850	758	747	699	752	753	713	638	621	677	656	653	659	609		
East Dunbartonshire	54,247	451	476	508	484	507	537	539	568	548	625	635	646	662	659	682	680	765	694	622	576	553	554	606	637	541	550	465	427	425	428	387		
East Lothian	50,132	582	573	559	519	583	482	524	543	561	575	618	665	597	591	612	642	664	645	614	675	466	499	489	511	403	433	481	375	386	357	411		
East Renfrewshire	46,560	435	449	487	533	519	517	506	515	537	545	566	625	583	610	647	639	607	580	539	532	504	456	521	484	433	386	375	366	347	395	336		
Edinburgh, City of	243,728	2,682	2,340	2,145	2,045	2,049	1,986	1,941	1,979	1,992	2,112	2,131	1,926	2,167	2,108	2,190	2,212	2,372	2,539	2,928	3,459	4,086	4,576	4,766	5,156	5,013	5,098	5,149	5,162	5,086	4,444	4,049		
Eilean Siar	13,319	111	138	127	117	149	133	132	135	123	144	137	168	170	159	173	148	176	145	130	102	110	83	94	89	109	73	101	131	125	134	98		
Falkirk	78,203	997	890	872	870	815	835	741	856	786	871	872	860	844	908	877	922	915	1,000	895	821	932	816	811	938	774	897	924	924	925	1,004	929		
Fife	187,247	2,084	2,008	1,991	1,937	1,886	1,850	1,808	1,926	1,769	1,934	2,095	2,006	2,009	2,150	2,215	2,279	2,193	2,235	2,261	2,639	2,723	2,742	2,515	2,252	2,089	2,019	1,897	2,067	2,132	2,021	1,867		
Glasgow City	302,531	3,538	3,377	3,105	3,004	2,868	2,845	2,696	2,724	2,694	2,743	2,820	2,902	2,760	2,941	2,902	3,174	3,393	3,408	3,742	4,585	4,931	5,254	5,458	5,733	5,580	5,784	5,653	5,724	5,627	5,048	4,583		
Highland	111,764	1,160	1,121	1,144	1,088	1,152	1,097	1,076	1,129	1,081	1,169	1,239	1,228	1,326	1,286	1,324	1,391	1,383	1,313	1,098	998	913	955	995	1,026	956	944	1,063	1,180	1,154	1,140	1,065		
Inverclyde	42,188	390	401	407	415	419	399	373	403	396	447	413	473	485	473	513	464	522	503	530	463	539	505	542	543	479	471	468	451	479	401	394		
Midlothian	42,263	498	448	481	435	429	424	404	485	494	540	483	524	472	490	506	490	576	571	508	443	524	477	509	431	451	394	443	436	413	417	387		
Moray	43,366	485	458	406	452	406	401	356	440	412	474	506	531	537	531	543	586	600	525	492	445	433	437	370	412	399	377	358	325	328	404	359		
North Ayrshire	71,472	751	720	727	694	715	713	714	729	700	719	790	804	820	842	880	823	888	918	819	807	863	783	797	814	748	730	749	736	728	698	679		
North Lanarkshire	169,004	1,983	1,966	1,877	1,912	1,913	1,867	1,848	1,842	1,810	1,915	1,987	2,043	1,980	1,901	1,977	1,976	2,103	2,110	2,009	2,088	1,998	2,108	2,166	2,243	2,050	1,998	2,079	2,098	2,120	1,975	1,906		
Orkney Islands	10,101	109	89	109	103	84	99	111	81	102	96	90	118	106	141	156	144	148	123	118	76	79	92	85	85	82	72	80	94	92	114	98		
Perth & Kinross	73,786	676	706	677	685	681	698	687	795	719	762	783	868	836	858	893	911	866	887	697	686	732	819	928	907	849	715	737	692	661	625	622		
Renfrewshire	88,663	997	921	903	965	936	860	905	924	901	909	933	921	971	956	1,002	1,014	1,128	1,070	1,036	1,032	1,054	1,085	1,111	1,055	1,041	1,073	1,000	1,088	1,065	956	979		
Scottish Borders	57,979	608	603	543	584	578	584	626	562	644	585	638	634	681	677	658	715	696	721	664	525	560	530	515	481	474	470	465	463	451	473	451		
Shetland Islands	10,881	115	126	142	94	110	126	111	128	136	134	140	152	138	149	139	147	154	156	129	96	85	85	88	94	94	85	89	108	114	142	113		
South Ayrshire	58,289	532	528	521	572	529	498	526	530	494	587	614	629	619	612	692	664	705	652	664	585	635	655	626	604	614	476	511	588	476	507	545		
South Lanarkshire	161,719	1,785	1,675	1,780	1,674	1,676	1,655	1,658	1,639	1,710	1,806	1,744	1,862	1,769	1,808	1,966	1,946	2,014	1,939	1,826	1,747	1,825	1,831	1,900	1,961	1,912	1,772	1,781	1,943	1,881	1,717	1,776		
Stirling	46,161	419	447	460	456	470	480	426	500	487	520	519	563	535	557	541	561	635	729	760	780	887	766	613	544	476	438	465	459	472	397	413		
West Dunbartonshire	47,796	599	515	506	465	457	459	477	437	498	466	495	515	489	540	506	582	570	583	600	588	610	569	657	694	630	594	618	613	542	501	497		
West Lothian	87,160	1,146	1,096	1,080	1,044	1,078	1,013	1,085	967	1,008	1,100	1,119	1,118	1,099	1,054	1,105	1,073	1,118	1,142	1,061	986	959	1,105	1,073	997	925	1,003	1,034	1,045	990	977	980		
<b>NHS Board areas</b>																																		
Ayrshire & Arran	191,678	1,891	1,891	1,879	1,865	1,879	1,838	1,859	1,880	1,821	1,948	2,023	2,066	2,104	2,118	2,344	2,283	2,421	2,420	2,241	2,139	2,197	2,190	2,176	2,131	2,000	1,827	1,937	1,980	1,857	1,864	1,833		
Borders	57,979	608	603	543	584	578	584	626	562	644	585	638	634	681	677	658	715	696	721	664	525	560	530	515	481	474	470	465	463	451	473	451		
Dumfries & Galloway	76,654	743	723	735	701	693	690	637	676	691	724	878																						

Table 2 (continued)

PERSONS (continued)

Area	Age																													
	31	32	33	34	35	36	37	38	39	40	41	42	43	44	45	46	47	48	49	50	51	52	53	54	55	56	57	58	59	60
<b>SCOTLAND</b>	56,967	60,340	60,954	62,124	66,269	70,556	74,682	74,310	77,210	78,861	80,430	79,682	81,970	81,945	81,183	79,931	78,558	76,644	75,769	73,967	72,105	70,105	67,599	66,801	65,479	63,239	64,433	64,993	67,057	69,069
<b>Council areas</b>																														
Aberdeen City	3,018	2,883	2,831	2,901	2,937	2,997	3,019	2,955	3,046	2,933	3,095	2,955	3,110	3,094	3,062	3,038	2,888	3,150	3,041	2,902	2,818	2,811	2,772	2,656	2,471	2,486	2,457	2,478	2,607	2,594
Aberdeenshire	2,323	2,477	2,531	2,942	3,206	3,281	3,830	3,692	3,979	3,871	4,069	4,053	4,095	4,138	4,042	3,921	3,900	3,733	3,787	3,824	3,699	3,615	3,597	3,687	3,395	3,302	3,428	3,389	3,525	3,623
Angus	940	1,072	1,056	1,159	1,388	1,470	1,502	1,423	1,581	1,532	1,683	1,624	1,761	1,775	1,750	1,813	1,675	1,762	1,633	1,565	1,560	1,568	1,458	1,532	1,611	1,475	1,541	1,587	1,674	1,768
Argyll & Bute	730	832	904	846	1,063	1,111	1,116	1,267	1,266	1,374	1,366	1,336	1,459	1,416	1,381	1,376	1,445	1,387	1,356	1,350	1,320	1,367	1,242	1,299	1,226	1,219	1,405	1,308	1,398	1,433
Clackmannanshire	549	574	575	602	677	735	680	742	850	791	911	809	817	838	835	781	771	750	763	692	703	661	715	683	650	613	655	691	719	743
Dumfries & Galloway	1,128	1,359	1,304	1,454	1,524	1,770	1,919	1,904	2,074	2,035	2,172	2,285	2,364	2,352	2,421	2,374	2,311	2,206	2,162	2,194	2,119	2,149	2,084	2,093	2,063	2,073	2,144	2,308	2,352	2,404
Dundee City	1,448	1,459	1,488	1,478	1,589	1,587	1,842	1,717	1,840	1,753	1,811	1,920	2,008	1,978	2,068	1,997	2,014	2,012	1,873	1,940	1,886	1,699	1,706	1,610	1,605	1,617	1,550	1,629	1,722	1,743
East Ayrshire	1,111	1,353	1,380	1,310	1,472	1,703	1,756	1,762	1,902	1,922	2,000	1,903	2,068	1,895	1,908	1,820	1,815	1,726	1,803	1,699	1,735	1,563	1,543	1,537	1,596	1,465	1,576	1,678	1,661	1,760
East Dunbartonshire	850	803	782	928	1,043	1,206	1,257	1,368	1,440	1,464	1,602	1,567	1,714	1,725	1,825	1,819	1,760	1,702	1,815	1,685	1,758	1,583	1,543	1,468	1,502	1,339	1,396	1,440	1,472	1,484
East Lothian	839	941	1,114	1,052	1,223	1,272	1,526	1,487	1,557	1,575	1,674	1,487	1,668	1,624	1,605	1,528	1,549	1,479	1,469	1,419	1,432	1,344	1,282	1,273	1,251	1,152	1,245	1,201	1,202	1,382
East Renfrewshire	662	726	677	856	888	982	1,159	1,181	1,283	1,321	1,415	1,451	1,467	1,562	1,562	1,545	1,507	1,522	1,519	1,432	1,398	1,359	1,301	1,192	1,133	1,172	1,061	1,125	1,162	1,211
Edinburgh, City of	7,678	7,466	7,470	7,033	7,049	6,977	7,275	6,819	6,708	6,999	7,042	6,735	6,817	6,663	6,835	6,522	6,526	6,281	6,137	5,973	6,020	5,544	5,306	5,196	5,052	4,991	5,071	5,088	5,226	5,167
Eilean Siar	251	314	260	266	322	362	308	340	402	425	395	377	391	406	405	412	388	405	377	388	401	364	389	340	385	382	355	418	401	394
Falkirk	1,725	1,854	1,954	2,048	2,091	2,297	2,345	2,327	2,407	2,559	2,542	2,424	2,521	2,464	2,415	2,395	2,288	2,242	2,126	2,120	2,056	1,986	1,865	1,878	1,881	1,834	1,997	1,993	1,997	2,018
Fife	3,630	4,009	3,863	4,029	4,411	4,836	5,129	5,196	5,497	5,583	5,639	5,546	5,639	5,622	5,548	5,527	5,421	5,286	5,218	5,138	4,951	4,883	4,700	4,721	4,532	4,444	4,602	4,667	4,957	5,170
Glasgow City	8,895	9,099	8,738	8,414	8,591	8,795	8,885	8,496	8,712	8,674	8,420	8,693	8,689	8,960	8,688	8,716	8,422	8,128	8,070	7,499	7,421	7,344	6,951	6,518	6,298	5,846	5,709	5,633	5,675	5,898
Highland	2,061	2,319	2,399	2,374	2,626	2,812	2,942	2,999	3,022	3,265	3,379	3,445	3,618	3,635	3,523	3,377	3,515	3,473	3,382	3,394	3,267	3,254	3,240	3,248	3,256	3,198	3,215	3,222	3,363	3,510
Inverclyde	759	763	846	825	986	999	1,027	1,046	1,095	1,217	1,260	1,256	1,259	1,331	1,405	1,397	1,277	1,276	1,259	1,180	1,225	1,156	1,083	1,048	1,025	1,018	1,139	1,053	1,055	1,081
Midlothian	786	815	877	933	948	1,063	1,200	1,256	1,214	1,315	1,256	1,272	1,286	1,253	1,354	1,246	1,222	1,278	1,244	1,210	1,155	1,100	1,077	1,063	1,077	1,039	1,049	1,092	1,168	1,139
Moray	824	944	916	1,006	1,122	1,243	1,375	1,343	1,430	1,369	1,453	1,428	1,404	1,377	1,471	1,385	1,359	1,292	1,256	1,298	1,200	1,260	1,149	1,185	1,192	1,063	1,200	1,224	1,186	1,274
North Ayrshire	1,214	1,442	1,358	1,575	1,528	1,669	1,858	1,935	1,931	2,032	2,110	2,059	2,140	2,178	2,111	2,092	1,973	1,967	2,019	1,963	1,927	1,907	1,813	1,791	1,826	1,773	1,774	1,853	1,931	2,063
North Lanarkshire	3,509	4,119	4,029	4,144	4,420	4,772	4,877	5,144	5,248	5,234	5,300	5,308	5,407	5,192	5,055	5,166	4,914	4,745	4,659	4,638	4,580	4,372	4,163	4,196	4,139	3,814	3,797	3,959	3,955	4,115
Orkney Islands	158	201	211	174	232	230	277	296	244	319	346	336	317	323	331	326	316	315	303	277	325	308	281	284	301	283	291	275	307	308
Perth & Kinross	1,291	1,259	1,386	1,568	1,593	1,804	1,827	1,842	1,990	2,159	2,151	2,251	2,286	2,312	2,300	2,197	2,181	1,975	2,157	2,086	2,009	1,929	1,966	1,957	2,031	1,885	1,918	2,057	2,072	2,193
Renfrewshire	1,732	1,681	1,846	1,925	2,015	2,222	2,413	2,559	2,602	2,746	2,757	2,847	2,893	2,871	2,733	2,925	2,885	2,594	2,609	2,541	2,349	2,320	2,136	2,257	2,154	2,032	2,258	2,124	2,241	2,173
Scottish Borders	960	1,023	1,165	1,109	1,279	1,514	1,580	1,621	1,678	1,790	1,843	1,852	1,834	1,845	1,902	1,732	1,788	1,771	1,781	1,698	1,638	1,602	1,533	1,566	1,555	1,511	1,567	1,594	1,670	1,783
Shetland Islands	294	255	285	243	308	320	318	308	305	328	320	353	321	380	351	369	352	316	304	312	280	312	331	303	308	292	309	322	314	313
South Ayrshire	889	935	1,105	1,101	1,219	1,399	1,451	1,462	1,429	1,601	1,593	1,608	1,753	1,759	1,649	1,783	1,759	1,668	1,676	1,733	1,639	1,604	1,585	1,549	1,569	1,571	1,546	1,556	1,676	1,644
South Lanarkshire	3,069	3,439	3,597	3,647	3,997	4,248	4,535	4,541	4,852	4,876	4,952	4,797	4,906	5,217	4,995	4,930	4,834	4,903	4,764	4,728	4,588	4,444	4,298	4,251	4,086	4,021	3,818	3,831	3,969	4,043
Stirling	770	743	853	850	1,007	1,140	1,280	1,309	1,288	1,364	1,321	1,412	1,412	1,449	1,385	1,333	1,364	1,317	1,249	1,217	1,153	1,118	1,086	1,141	1,118	1,113	1,139	1,120	1,134	1,221
West Dunbartonshire	950	1,016	1,025	1,013	1,066	1,120	1,261	1,252	1,363	1,424	1,428	1,418	1,479	1,504	1,484	1,336	1,451	1,409	1,355	1,397	1,262	1,329	1,295	1,209	1,116	1,171	1,148	1,089	1,146	1,230
West Lothian	1,924	2,165	2,129	2,319	2,449	2,620	2,913	2,721	2,975	3,011	3,125	2,857	3,053	2,807	2,784	2,753	2,688	2,574	2,603	2,475	2,231	2,250	2,109	2,070	2,075	2,045	2,073	1,989	2,120	2,187
<b>NHS Board areas</b>																														
Ayrshire & Arran	3,214	3,730	3,843	3,986	4,219	4,771	5,065	5,159	5,262	5,555	5,703	5,570	5,961	5,832	5,668	5,695	5,547	5,361	5,498	5,395	5,301	5,074	4,941	4,877	4,991	4,809	4,916	5,087	5,268	5,467
Borders	960	1,023	1,165	1,109	1,279	1,514	1,580	1,621	1,678	1,790	1,843	1,852	1,834	1,845	1,902	1,732	1,788	1,771	1,781	1,698	1,638	1,602	1,533	1,566	1,555	1,511	1,567	1,594	1,670	1,783
Dumfries & Galloway	1,128	1,359	1,304	1,454	1,524	1,770	1,919	1,904	2,074	2,035	2,172	2,285	2,364	2,352	2,421	2,374	2,311	2,206	2,162	2,194	2,119	2,149	2,084	2,093	2,063	2,073	2,144	2,308	2,352	2,404
Fife	3,630	4,009	3,862	4,029	4,411	4,838	5,125	5,196	5,495	5,581	5,636	5,544	5,637	5,623	5,545	5,524	5,420	5,286	5,217	5,137	4,950	4,883	4,700	4,718	4,531	4,443	4,602	4,664	4,956	5,169
Forth Valley	3,037	3,167	3,374	3,500	3,776	4,163	4,299	4,371	4,538	4,708	4,774	4,654	4,756	4,747	4,635	4,501	4,422	4,304	4,131	4,030	3,905	3,760	3,662	3,696						

Table 2 (continued)

MALES (continued)

Area	Age																													
	31	32	33	34	35	36	37	38	39	40	41	42	43	44	45	46	47	48	49	50	51	52	53	54	55	56	57	58	59	60
<b>SCOTLAND</b>	28,418	29,701	29,593	30,219	31,985	33,677	35,887	35,639	37,121	37,632	38,942	38,109	39,422	39,156	38,759	38,882	37,958	37,199	36,636	35,755	35,009	34,315	33,076	32,736	32,121	30,980	31,487	31,885	32,869	33,773
<b>Council areas</b>																														
Aberdeen City	1,743	1,564	1,502	1,528	1,553	1,537	1,540	1,455	1,550	1,490	1,652	1,450	1,491	1,532	1,545	1,486	1,408	1,569	1,481	1,439	1,434	1,429	1,424	1,397	1,279	1,239	1,264	1,268	1,273	1,321
Aberdeenshire	1,092	1,163	1,202	1,360	1,533	1,510	1,811	1,790	1,943	1,882	2,028	1,989	2,001	2,021	1,993	2,007	1,961	1,838	1,904	1,995	1,845	1,815	1,798	1,843	1,675	1,658	1,743	1,726	1,825	1,885
Angus	439	532	501	552	653	707	692	680	749	720	796	754	845	877	848	909	778	858	794	767	727	767	704	743	807	717	760	802	771	882
Argyll & Bute	372	412	461	428	554	564	554	612	641	709	692	659	693	690	687	698	741	676	661	668	668	699	616	652	620	583	668	629	696	670
Clackmannanshire	259	285	294	279	303	357	332	364	438	383	438	378	399	427	416	379	377	385	389	304	349	303	354	326	322	298	286	347	360	368
Dumfries & Galloway	564	656	604	691	680	874	928	915	968	930	1,059	1,113	1,157	1,127	1,178	1,141	1,120	1,029	1,024	1,067	1,007	1,034	1,004	1,041	983	1,009	1,075	1,154	1,179	1,229
Dundee City	747	680	707	699	740	743	868	798	839	772	811	878	930	925	935	900	891	948	898	916	907	828	846	819	739	796	769	728	878	824
East Ayrshire	507	663	697	638	709	825	837	841	918	878	961	930	993	907	909	878	884	772	889	812	833	768	749	759	798	699	804	862	802	847
East Dunbartonshire	435	351	326	424	462	537	574	663	657	680	712	693	839	761	844	852	836	789	870	805	817	775	754	689	729	630	687	683	807	736
East Lothian	346	414	536	471	593	567	709	705	747	731	778	726	845	733	755	767	750	709	716	685	713	673	605	654	603	550	576	563	559	658
East Renfrewshire	304	330	279	387	370	461	504	538	600	556	637	688	651	722	729	728	740	717	777	702	697	689	617	558	555	581	494	555	550	575
Edinburgh, City of	3,967	3,819	3,748	3,573	3,564	3,397	3,666	3,430	3,336	3,490	3,492	3,266	3,370	3,154	3,264	3,125	3,213	3,032	2,982	2,895	2,876	2,838	2,662	2,604	2,498	2,503	2,433	2,429	2,526	2,550
Eilean Siar	120	148	135	134	158	186	158	158	201	208	208	175	197	201	207	205	192	205	210	197	212	174	194	180	212	184	180	213	210	222
Falkirk	865	888	920	1,024	983	1,093	1,111	1,121	1,149	1,213	1,250	1,169	1,263	1,195	1,141	1,158	1,111	1,134	1,029	1,083	995	954	887	911	912	876	934	981	967	968
Fife	1,734	1,941	1,818	1,972	2,139	2,330	2,435	2,548	2,639	2,667	2,798	2,643	2,688	2,717	2,624	2,674	2,698	2,639	2,536	2,459	2,461	2,369	2,280	2,321	2,224	2,153	2,226	2,243	2,367	2,473
Glasgow City	4,676	4,688	4,446	4,286	4,355	4,393	4,423	4,146	4,216	4,093	4,111	4,129	4,105	4,113	4,175	4,209	3,943	3,931	3,860	3,497	3,625	3,465	3,503	3,181	3,149	2,851	2,842	2,780	2,815	2,928
Highland	1,042	1,156	1,209	1,117	1,271	1,351	1,400	1,391	1,381	1,605	1,641	1,695	1,703	1,747	1,739	1,707	1,692	1,735	1,620	1,649	1,621	1,623	1,590	1,644	1,587	1,596	1,597	1,598	1,720	1,734
Inverclyde	387	366	388	383	474	475	490	470	475	529	596	563	612	612	679	686	633	589	579	587	607	572	526	497	508	499	559	524	515	510
Midlothian	366	356	403	434	444	486	548	632	551	594	609	564	585	573	582	575	568	612	584	561	515	550	509	518	515	506	482	538	567	549
Moray	414	505	443	560	577	635	697	701	763	727	723	741	706	720	752	711	700	667	649	662	576	635	560	567	601	526	583	609	592	631
North Ayrshire	568	664	589	782	706	739	828	920	898	947	953	932	1,021	1,026	924	1,007	943	926	945	893	907	922	884	844	840	863	879	903	912	978
North Lanarkshire	1,668	1,948	1,968	1,993	2,112	2,184	2,313	2,441	2,498	2,468	2,569	2,558	2,577	2,534	2,328	2,538	2,354	2,210	2,212	2,163	2,234	2,091	1,983	2,007	2,016	1,845	1,813	1,924	1,905	1,944
Orkney Islands	71	106	92	77	121	101	113	152	131	162	181	170	147	166	181	173	160	153	149	141	153	145	142	155	143	140	146	133	178	146
Perth & Kinross	636	653	687	726	746	849	819	852	935	998	1,026	1,119	1,074	1,171	1,125	1,078	1,052	982	1,069	1,012	966	911	976	942	984	899	921	1,023	1,008	1,106
Renfrewshire	850	849	878	876	922	973	1,131	1,171	1,241	1,301	1,266	1,329	1,406	1,392	1,303	1,424	1,308	1,237	1,259	1,217	1,149	1,134	1,003	1,075	1,046	980	1,053	1,044	1,069	1,053
Scottish Borders	483	475	551	501	591	737	737	794	836	894	887	915	918	866	916	871	880	844	831	826	794	773	786	769	759	762	776	795	810	873
Shetland Islands	134	134	146	104	159	153	161	156	150	157	171	185	169	186	192	189	174	161	154	150	134	167	156	162	151	155	158	170	168	182
South Ayrshire	398	452	516	546	593	674	702	659	675	763	782	747	859	833	732	872	842	828	796	803	773	774	779	748	763	745	753	847	795	
South Lanarkshire	1,508	1,641	1,692	1,705	1,857	1,980	2,151	2,164	2,340	2,334	2,339	2,280	2,302	2,410	2,364	2,338	2,354	2,378	2,241	2,369	2,143	2,128	2,015	2,049	2,013	1,953	1,905	1,852	1,939	1,898
Stirling	301	316	385	401	440	506	600	571	562	628	618	653	683	715	629	652	648	666	652	595	578	556	528	545	566	567	561	569	595	
West Dunbartonshire	431	476	495	484	497	516	601	563	631	683	667	636	730	713	699	615	676	711	636	675	589	639	605	554	560	583	544	524	566	563
West Lothian	991	1,070	975	1,084	1,126	1,237	1,454	1,238	1,463	1,440	1,491	1,382	1,463	1,390	1,364	1,330	1,331	1,269	1,240	1,161	1,104	1,115	1,037	998	985	1,012	1,018	971	1,039	1,080
<b>NHS Board areas</b>																														
Ayrshire & Arran	1,473	1,779	1,802	1,966	2,008	2,238	2,367	2,420	2,491	2,588	2,696	2,609	2,873	2,766	2,565	2,757	2,669	2,526	2,630	2,508	2,513	2,464	2,412	2,351	2,401	2,330	2,428	2,518	2,561	2,620
Borders	483	475	551	501	591	737	737	794	836	894	887	915	918	866	916	871	880	844	831	826	794	773	786	769	759	762	776	795	810	873
Dumfries & Galloway	564	656	604	691	680	874	928	915	968	930	1,059	1,113	1,157	1,127	1,178	1,141	1,120	1,029	1,024	1,067	1,007	1,034	1,004	1,041	983	1,009	1,075	1,154	1,179	1,229
Fife	1,734	1,941	1,818	1,972	2,139	2,332	2,432	2,548	2,639	2,667	2,797	2,643	2,688	2,717	2,621	2,673	2,697	2,639	2,535	2,459	2,461	2,369	2,280	2,320	2,223	2,152	2,226	2,241	2,367	2,472
Forth Valley	1,421	1,486	1,594	1,703	1,725	1,950	2,038	2,053	2,148	2,218	2,306	2,195	2,342	2,333	2,187	2,180	2,135	2,183	2,069	1,982	1,921	1,811	1,768	1,765	1,771	1,737	1,784	1,886	1,893	1,924
Grampian	3,249	3,232	3,147	3,448	3,663	3,682	4,048	3,946	4,256	4,099	4,403	4,180	4,198	4,273	4,290	4,204	4,069	4,074	4,034	4,096	3,855	3,879	3,782	3,807	3,555	3,423	3,590	3,603	3,690	3,837
Greater Glasgow	7,477	7,474	7,275	7,261	7,569	7,864	8,247	8,081	8,429	8,447	8,518	8,550	8,863	8,849	8,983	9,074	8,643	8,510	8,562	8,051	7,994	7,760	7,512	7,060	7,057	6,608	6,621	6,584	6,635	6,834
Highland	1,414	1,568	1,670	1,545	1,825	1,915	1,954	2,003	2,022	2,314	2,333	2,354	2,396	2,437	2,426	2,405	2,433	2,411	2,281	2,317	2,289	2,322	2,206	2,296	2,207	2,179	2,265	2,227	2,416	2,404
Lanarkshire	2,782	3,1																												

Table 2 (continued)

FEMALES (continued)

Area	Age																													
	31	32	33	34	35	36	37	38	39	40	41	42	43	44	45	46	47	48	49	50	51	52	53	54	55	56	57	58	59	60
<b>SCOTLAND</b>	<b>28,549</b>	<b>30,639</b>	<b>31,361</b>	<b>31,905</b>	<b>34,284</b>	<b>36,879</b>	<b>38,795</b>	<b>38,671</b>	<b>40,089</b>	<b>41,229</b>	<b>41,488</b>	<b>41,573</b>	<b>42,548</b>	<b>42,789</b>	<b>42,424</b>	<b>41,049</b>	<b>40,600</b>	<b>39,445</b>	<b>39,133</b>	<b>38,212</b>	<b>37,096</b>	<b>35,790</b>	<b>34,523</b>	<b>34,065</b>	<b>33,358</b>	<b>32,259</b>	<b>32,946</b>	<b>33,108</b>	<b>34,188</b>	<b>35,296</b>
<b>Council areas</b>																														
Aberdeen City	1,275	1,319	1,329	1,373	1,384	1,460	1,479	1,500	1,496	1,443	1,443	1,505	1,619	1,562	1,517	1,552	1,480	1,581	1,560	1,463	1,384	1,382	1,348	1,259	1,192	1,247	1,193	1,210	1,334	1,273
Aberdeenshire	1,231	1,314	1,329	1,582	1,673	1,771	2,019	1,902	2,036	1,989	2,041	2,064	2,094	2,117	2,049	1,914	1,939	1,895	1,883	1,829	1,854	1,800	1,799	1,844	1,720	1,644	1,685	1,663	1,700	1,738
Angus	501	540	555	607	735	763	810	743	832	812	887	870	916	898	902	904	897	904	839	798	833	801	754	789	804	758	781	785	903	886
Argyll & Bute	358	420	443	418	509	547	562	655	625	665	674	677	766	726	694	678	704	711	695	682	652	668	626	647	606	636	737	679	702	763
Clackmannanshire	290	289	281	323	374	378	348	378	412	408	473	431	418	411	419	402	394	365	374	388	354	358	361	357	328	315	369	344	359	375
Dumfries & Galloway	564	703	700	763	844	896	991	989	1,106	1,105	1,113	1,172	1,207	1,225	1,243	1,233	1,191	1,177	1,138	1,127	1,112	1,115	1,080	1,052	1,080	1,064	1,069	1,154	1,173	1,175
Dumfries City	701	779	781	779	849	844	974	919	1,001	981	1,000	1,042	1,078	1,053	1,133	1,097	1,123	1,064	975	1,024	979	871	860	791	866	821	781	901	844	919
East Ayrshire	604	690	683	672	763	878	919	921	984	1,044	1,039	973	1,075	988	999	942	931	954	914	887	902	795	794	778	798	766	772	816	859	913
East Dunbartonshire	415	452	456	504	581	669	683	705	783	784	890	874	875	964	981	967	924	913	945	880	941	808	789	779	773	709	709	757	785	748
East Lothian	493	527	578	581	630	705	817	782	810	844	896	761	823	891	850	761	799	770	753	734	719	671	677	619	648	602	669	638	643	724
East Renfrewshire	358	396	398	469	518	521	655	643	683	765	778	763	816	840	833	817	767	805	742	730	701	670	684	634	578	591	567	570	612	636
Edinburgh, City of	3,711	3,647	3,722	3,460	3,485	3,580	3,609	3,389	3,372	3,509	3,550	3,469	3,447	3,509	3,571	3,397	3,313	3,249	3,155	3,078	3,144	2,706	2,644	2,592	2,554	2,488	2,638	2,659	2,700	2,617
Eilean Siar	131	166	125	132	164	176	150	182	201	217	187	202	194	205	198	207	196	200	167	191	189	190	195	160	173	198	175	205	191	172
Falkirk	860	966	1,034	1,024	1,108	1,204	1,234	1,206	1,258	1,346	1,292	1,273	1,258	1,269	1,274	1,237	1,177	1,108	1,097	1,037	1,061	1,032	978	967	969	958	1,063	1,012	1,030	1,050
Fife	1,896	2,068	2,045	2,057	2,272	2,506	2,694	2,648	2,858	2,916	2,841	2,903	2,951	2,905	2,924	2,853	2,723	2,647	2,682	2,679	2,490	2,514	2,420	2,400	2,308	2,291	2,376	2,424	2,590	2,697
Glasgow City	4,219	4,411	4,292	4,128	4,236	4,402	4,462	4,350	4,496	4,581	4,309	4,564	4,584	4,847	4,513	4,507	4,479	4,197	4,210	4,002	3,796	3,879	3,448	3,337	3,149	2,995	2,867	2,853	2,860	2,970
Highland	1,019	1,163	1,190	1,257	1,355	1,461	1,542	1,608	1,641	1,660	1,738	1,750	1,915	1,888	1,784	1,670	1,823	1,738	1,762	1,745	1,646	1,631	1,650	1,604	1,669	1,602	1,618	1,624	1,643	1,776
Inverclyde	372	397	458	442	512	524	537	576	620	688	664	693	647	719	726	711	644	687	680	593	618	584	557	551	517	519	580	529	540	571
Midlothian	420	459	474	499	504	577	652	624	663	721	647	708	701	680	712	671	654	666	660	649	640	550	568	545	562	533	567	554	601	590
Moray	410	439	473	446	545	608	678	642	667	642	730	687	698	657	719	674	659	625	607	636	624	625	589	618	591	537	617	615	594	643
North Ayrshire	646	778	769	793	822	930	1,030	1,015	1,033	1,085	1,157	1,127	1,119	1,152	1,187	1,085	1,030	1,041	1,074	1,070	1,020	985	929	947	986	910	915	950	1,019	1,085
North Lanarkshire	1,841	2,171	2,061	2,151	2,308	2,588	2,564	2,703	2,750	2,766	2,731	2,750	2,830	2,658	2,727	2,628	2,560	2,535	2,447	2,475	2,346	2,281	2,180	2,189	2,123	1,969	1,964	2,035	2,050	2,171
Orkney Islands	87	95	119	97	111	129	164	144	113	157	165	166	170	157	150	153	156	162	154	136	172	163	139	129	158	143	145	142	129	162
Perth & Kinross	655	606	699	842	847	955	1,008	990	1,055	1,161	1,125	1,132	1,212	1,141	1,175	1,119	1,129	993	1,088	1,074	1,043	1,018	990	1,015	1,047	986	997	1,034	1,064	1,087
Renfrewshire	882	832	968	1,049	1,093	1,249	1,282	1,388	1,361	1,445	1,491	1,518	1,487	1,479	1,430	1,501	1,577	1,357	1,350	1,324	1,200	1,186	1,133	1,182	1,108	1,052	1,205	1,080	1,172	1,120
Scottish Borders	477	548	614	608	688	777	843	827	842	896	956	937	916	979	986	861	908	927	950	872	844	829	747	797	796	749	791	799	860	910
Shetland Islands	160	121	139	139	149	167	157	152	155	171	149	168	152	194	159	180	178	155	150	162	146	145	175	141	157	137	151	152	146	131
South Ayrshire	491	483	589	555	626	725	749	803	754	838	811	861	894	926	917	911	917	840	880	930	866	830	806	801	806	803	801	803	829	849
South Lanarkshire	1,561	1,798	1,905	1,942	2,140	2,268	2,384	2,377	2,512	2,542	2,613	2,517	2,604	2,807	2,631	2,592	2,480	2,525	2,523	2,359	2,445	2,316	2,283	2,202	2,073	2,068	1,913	1,979	2,030	2,145
Stirling	469	427	468	449	567	634	680	738	726	736	703	759	743	734	756	681	716	651	597	622	575	562	558	612	573	547	572	559	565	626
West Dunbartonshire	519	540	530	529	569	604	660	689	732	741	761	782	749	791	785	721	775	698	719	722	673	690	690	655	556	588	604	565	580	667
West Lothian	933	1,095	1,154	1,235	1,323	1,383	1,459	1,483	1,512	1,571	1,634	1,475	1,590	1,417	1,420	1,423	1,357	1,305	1,363	1,314	1,127	1,135	1,072	1,072	1,090	1,033	1,055	1,018	1,081	1,107
<b>NHS Board areas</b>																														
Ayrshire & Arran	1,741	1,951	2,041	2,020	2,211	2,533	2,698	2,739	2,771	2,967	3,007	2,961	3,088	3,066	3,103	2,938	2,878	2,835	2,868	2,887	2,788	2,610	2,529	2,526	2,590	2,479	2,488	2,569	2,707	2,847
Borders	477	548	614	608	688	777	843	827	842	896	956	937	916	979	986	861	908	927	950	872	844	829	747	797	796	749	791	799	860	910
Dumfries & Galloway	564	703	700	763	844	896	991	989	1,106	1,105	1,113	1,172	1,207	1,225	1,243	1,233	1,191	1,177	1,138	1,127	1,112	1,115	1,080	1,052	1,080	1,064	1,069	1,154	1,173	1,175
Fife	1,896	2,068	2,044	2,057	2,272	2,506	2,693	2,648	2,856	2,914	2,839	2,901	2,949	2,906	2,924	2,851	2,723	2,647	2,682	2,678	2,489	2,514	2,420	2,398	2,308	2,291	2,376	2,423	2,589	2,697
Forth Valley	1,616	1,681	1,780	1,797	2,051	2,213	2,261	2,318	2,390	2,490	2,468	2,459	2,414	2,414	2,448	2,321	2,287	2,121	2,062	2,048	1,984	1,949	1,894	1,931	1,867	1,818	2,000	1,912	1,953	2,047
Grampian	2,916	3,072	3,131	3,401	3,602	3,839	4,176	4,044	4,199	4,074	4,214	4,256	4,411	4,336	4,285	4,140	4,078	4,101	4,050	3,928	3,862	3,807	3,736	3,721	3,503	3,428	3,495	3,488	3,628	3,654
Greater Glasgow	7,229	7,529	7,642	7,646	8,086	8,566	8,904	8,946	9,284	9,597	9,519	9,816	9,820	10,277	9,893	9,836	9,783	9,225	9,248	8,835	8,537	8,397	7,859	7,682	7,195	6,956	6,966	6,816	7,067	7,238
Highland	1,377	1,583	1,633	1,675	1,864	2,008	2,104	2,263																						

**Table 2 (continued)**

**PERSONS (continued)**

Area	Age																														
	61	62	63	64	65	66	67	68	69	70	71	72	73	74	75	76	77	78	79	80	81	82	83	84	85	86	87	88	89	90+	
<b>SCOTLAND</b>	<b>74,880</b>	<b>57,476</b>	<b>54,976</b>	<b>55,981</b>	<b>54,444</b>	<b>50,279</b>	<b>47,110</b>	<b>48,498</b>	<b>47,465</b>	<b>46,355</b>	<b>44,563</b>	<b>43,556</b>	<b>41,782</b>	<b>39,312</b>	<b>37,556</b>	<b>37,100</b>	<b>35,152</b>	<b>32,875</b>	<b>30,664</b>	<b>27,309</b>	<b>25,670</b>	<b>24,592</b>	<b>21,772</b>	<b>20,006</b>	<b>17,100</b>	<b>15,954</b>	<b>14,599</b>	<b>13,530</b>	<b>8,109</b>	<b>31,191</b>	
<b>Council areas</b>																															
Aberdeen City	2,787	2,060	1,731	1,814	1,848	1,784	1,623	1,746	1,636	1,671	1,620	1,580	1,524	1,534	1,468	1,542	1,399	1,320	1,234	1,061	1,068	950	882	788	660	609	629	573	280	1,166	
Aberdeenshire	3,805	3,010	2,701	2,728	2,597	2,431	2,118	2,296	2,164	2,062	1,947	1,944	1,804	1,724	1,628	1,521	1,476	1,390	1,333	1,196	1,088	1,004	1,030	965	743	723	617	640	339	1,492	
Angus	1,976	1,420	1,381	1,415	1,376	1,268	1,163	1,220	1,125	1,120	1,135	1,093	1,052	976	861	934	951	830	750	718	650	659	557	522	452	414	326	336	216	836	
Argyll & Bute	1,747	1,259	1,249	1,267	1,179	1,171	1,081	1,170	1,075	979	1,000	946	897	817	817	808	729	674	664	604	524	524	473	417	359	319	322	299	213	696	
Clackmannanshire	801	589	597	596	551	496	449	438	443	447	484	402	375	321	334	342	273	312	257	241	209	202	163	180	145	144	136	100	78	199	
Dumfries & Galloway	2,676	2,105	2,055	2,080	2,069	1,954	1,822	1,843	1,761	1,685	1,727	1,616	1,466	1,452	1,443	1,334	1,258	1,224	1,147	999	1,004	889	836	665	655	575	494	436	273	1,134	
Dundee City	1,996	1,476	1,475	1,361	1,381	1,316	1,305	1,356	1,346	1,395	1,253	1,289	1,182	1,195	1,135	1,154	1,095	1,023	971	868	766	785	786	711	599	564	490	456	252	980	
East Ayrshire	1,920	1,402	1,429	1,406	1,334	1,245	1,208	1,206	1,155	1,137	1,122	1,044	1,030	976	954	885	841	752	662	634	549	575	481	414	390	355	328	292	191	669	
East Dunbartonshire	1,634	1,263	1,276	1,222	1,171	1,093	1,044	1,074	1,084	1,047	1,059	959	962	925	854	828	759	738	694	642	597	507	473	422	371	345	292	270	179	629	
East Lothian	1,376	1,118	1,063	1,155	1,018	1,012	957	912	887	989	820	824	811	790	722	734	682	638	635	548	534	535	423	375	360	327	306	288	128	649	
East Renfrewshire	1,315	988	952	972	946	811	849	821	812	870	793	810	751	723	684	714	655	605	570	525	501	513	376	393	313	326	272	240	153	557	
Edinburgh, City of	5,783	4,145	3,871	3,886	3,811	3,437	3,313	3,472	3,408	3,469	3,293	3,354	3,193	3,088	3,068	2,977	2,966	2,744	2,552	2,420	2,276	2,152	1,898	1,814	1,614	1,157	1,466	1,329	819	3,110	
Eilean Siar	452	359	319	342	341	299	328	317	296	295	287	260	266	254	248	236	188	202	208	174	167	162	144	142	118	125	108	99	55	213	
Falkirk	2,209	1,639	1,633	1,612	1,636	1,451	1,427	1,386	1,502	1,394	1,296	1,238	1,225	1,120	1,052	1,006	974	902	849	709	717	633	611	567	458	428	383	382	190	726	
Fife	5,711	4,379	4,238	4,316	4,038	3,781	3,355	3,493	3,435	3,189	3,237	3,158	2,960	2,800	2,624	2,512	2,391	2,333	2,082	1,950	1,940	1,803	1,593	1,490	1,231	1,144	1,092	986	651	2,485	
Glasgow City	6,093	4,854	4,634	4,620	4,702	4,317	4,260	4,396	4,396	4,361	4,222	4,175	4,329	3,851	3,718	3,901	3,605	3,342	3,144	2,754	2,481	2,474	2,122	1,921	1,682	1,594	1,461	1,368	795	3,060	
Highland	3,493	2,808	2,719	2,822	2,769	2,559	2,254	2,355	2,156	2,197	2,003	1,960	1,853	1,781	1,710	1,677	1,602	1,465	1,464	1,218	1,197	1,132	1,002	967	785	727	679	556	361	1,434	
Inverclyde	1,140	974	881	943	929	776	791	777	777	787	723	744	669	640	619	651	624	560	543	433	404	416	330	323	293	256	255	225	151	540	
Midlothian	1,287	997	969	929	852	764	764	751	759	747	667	703	657	598	527	569	548	486	474	384	389	323	297	305	252	189	234	226	93	416	
Moray	1,401	1,046	1,056	1,061	1,031	994	895	930	850	874	823	781	849	808	727	648	671	573	564	520	454	436	401	362	299	284	221	249	147	540	
North Ayrshire	2,246	1,687	1,594	1,717	1,610	1,524	1,416	1,547	1,396	1,409	1,238	1,259	1,204	1,139	1,092	1,059	982	899	837	732	635	683	539	482	480	408	434	344	205	840	
North Lanarkshire	4,253	3,383	3,231	3,447	3,388	2,933	2,845	2,967	2,918	2,835	2,611	2,600	2,434	2,257	2,164	2,033	1,920	1,847	1,662	1,420	1,343	1,296	1,069	1,012	808	755	677	595	398	1,404	
Orkney Islands	342	245	241	283	274	283	203	277	216	216	183	170	181	166	139	142	137	146	130	118	92	101	94	82	60	73	65	49	46	143	
Perth & Kinross	2,376	1,882	1,795	1,779	1,759	1,688	1,470	1,522	1,597	1,408	1,427	1,374	1,355	1,223	1,169	1,180	1,166	1,050	1,003	897	921	822	708	711	631	542	467	452	272	1,187	
Renfrewshire	2,494	1,848	1,829	1,939	1,754	1,661	1,615	1,537	1,604	1,539	1,525	1,454	1,431	1,302	1,138	1,219	1,184	1,100	984	862	777	820	701	588	532	504	377	440	222	930	
Scottish Borders	2,031	1,516	1,427	1,490	1,524	1,263	1,215	1,243	1,326	1,199	1,150	1,094	1,036	983	940	937	917	850	746	725	648	620	571	487	438	417	388	357	218	707	
Shetland Islands	338	252	269	249	275	259	203	224	184	184	169	158	166	130	135	129	128	129	113	99	112	76	72	81	72	66	28	66	28	154	
South Ayrshire	1,906	1,477	1,492	1,442	1,447	1,358	1,198	1,282	1,180	1,213	1,226	1,174	1,114	1,034	1,034	1,000	944	866	793	711	697	740	612	580	467	472	408	394	215	993	
South Lanarkshire	4,410	3,388	3,253	3,351	3,308	3,046	2,891	2,918	2,851	2,788	2,711	2,696	2,409	2,357	2,311	2,174	2,080	1,962	1,846	1,596	1,504	1,415	1,197	1,145	952	851	771	769	460	1,625	
Stirling	1,389	1,036	908	1,023	956	915	834	845	882	776	807	747	721	654	653	649	580	555	482	463	411	385	417	342	262	285	274	235	138	547	
West Dunbartonshire	1,242	1,041	962	1,007	915	858	778	778	826	771	765	739	722	667	703	665	599	598	552	459	433	417	372	327	273	248	251	223	167	525	
West Lothian	2,251	1,830	1,746	1,707	1,655	1,532	1,436	1,399	1,418	1,302	1,225	1,200	1,162	991	890	934	827	761	703	615	595	529	502	431	346	303	304	256	176	605	
<b>NHS Board areas</b>																															
Ayrshire & Arran	6,072	4,566	4,515	4,565	4,391	4,127	3,822	4,035	3,731	3,759	3,586	3,477	3,348	3,149	3,080	2,944	2,767	2,517	2,292	2,077	1,881	1,998	1,632	1,476	1,337	1,235	1,170	1,030	611	2,502	
Borders	2,031	1,516	1,427	1,490	1,524	1,263	1,215	1,243	1,326	1,199	1,150	1,094	1,036	983	940	937	917	850	746	725	648	620	571	487	438	417	388	357	218	707	
Dumfries & Galloway	2,676	2,105	2,055	2,080	2,069	1,954	1,822	1,843	1,761	1,685	1,727	1,616	1,466	1,452	1,443	1,334	1,258	1,224	1,147	999	1,004	889	836	665	655	575	494	436	273	1,134	
Fife	5,708	4,377	4,238	4,314	4,036	3,780	3,355	3,492	3,434	3,188	3,237	3,158	2,959	2,799	2,623	2,512	2,390	2,333	2,081	1,950	1,940	1,803	1,593	1,489	1,231	1,144	1,092	986	651	2,484	
Forth Valley	4,398	3,260	3,132	3,227	3,142	2,863	2,709	2,668	2,818	2,611	2,583	2,380	2,318	2,090	2,042	1,992	1,822	1,764	1,582	1,409	1,338	1,217	1,189	1,088	861	858	788	716	398	1,456	
Grampian	7,993	6,116	5,488	5,603	5,476	5,209	4,636	4,972	4,650	4,607	4,390	4,305	4,177	4,066	3,823	3,711	3,546	3,283	3,131	2,777	2,610	2,390	2,313	2,115	1,702	1,616	1,467	1,462	766	3,198	
Greater Glasgow & Clyde	14,911	11,799	11,270	11,493	11,174	10,145	9,974	10,050	10,151	9,972	9,697	9,485	9,423	8,647	8,239	8,457	7,879	7,381	6,927	6,043	5,555	5,474	4,635	4,213	3,710	3,487	3,121	2,942	1,777	6,567	

Table 2 (continued)

MALES (continued)

Area	Age																													
	61	62	63	64	65	66	67	68	69	70	71	72	73	74	75	76	77	78	79	80	81	82	83	84	85	86	87	88	89	90+
<b>SCOTLAND</b>	<b>36,483</b>	<b>28,132</b>	<b>26,549</b>	<b>27,057</b>	<b>25,805</b>	<b>23,694</b>	<b>21,947</b>	<b>22,583</b>	<b>22,098</b>	<b>21,475</b>	<b>20,277</b>	<b>19,622</b>	<b>18,599</b>	<b>17,269</b>	<b>16,273</b>	<b>15,801</b>	<b>14,737</b>	<b>13,408</b>	<b>12,363</b>	<b>10,836</b>	<b>9,955</b>	<b>9,240</b>	<b>7,997</b>	<b>7,154</b>	<b>5,736</b>	<b>5,205</b>	<b>4,649</b>	<b>4,193</b>	<b>2,376</b>	<b>7,553</b>
<b>Council areas</b>																														
Aberdeen City	1,380	1,022	808	872	887	839	764	785	741	802	738	679	682	700	621	652	570	539	476	382	440	348	330	253	196	188	206	215	84	296
Aberdeenshire	1,882	1,518	1,353	1,402	1,289	1,178	1,033	1,133	1,077	1,039	944	946	884	805	767	688	670	609	588	483	468	409	430	370	251	266	217	187	112	371
Angus	937	703	650	690	677	616	581	569	538	513	545	527	467	425	384	404	427	379	286	315	241	253	204	187	158	140	93	120	84	227
Argyll & Bute	803	595	647	647	604	585	534	553	517	471	474	452	408	370	365	347	333	273	297	268	209	188	188	143	139	95	102	98	59	180
Clackmannanshire	381	301	287	294	257	227	204	205	191	227	216	172	173	159	166	169	111	125	105	111	90	79	57	61	50	39	41	28	22	51
Dumfries & Galloway	1,320	1,049	984	1,033	966	948	862	906	821	841	848	763	662	664	684	614	576	534	468	404	413	382	335	241	241	203	170	156	90	283
Dundee City	960	705	725	700	699	620	572	664	637	642	554	570	516	502	467	460	454	413	406	347	289	271	296	260	199	197	187	144	63	267
East Ayrshire	925	691	674	697	637	563	568	542	588	534	493	474	466	423	413	371	361	303	271	271	226	212	197	160	142	111	97	100	64	162
East Dunbartonshire	799	613	599	561	543	500	469	502	483	478	479	443	437	415	373	380	331	326	297	258	221	181	163	148	138	96	95	93	54	171
East Lothian	671	564	521	543	490	495	453	405	406	480	388	355	346	359	317	346	302	253	270	228	214	216	171	126	133	111	93	80	49	149
East Renfrewshire	613	518	443	429	418	372	396	370	384	396	367	355	318	307	300	288	275	238	214	199	163	216	139	138	109	104	78	68	37	112
Edinburgh, City of	2,787	1,936	1,888	1,856	1,774	1,582	1,547	1,605	1,537	1,511	1,472	1,507	1,401	1,355	1,311	1,187	1,227	1,097	1,011	942	833	756	682	638	526	524	466	406	265	788
Eilean Siar	231	192	157	186	156	152	148	142	152	145	129	116	135	114	96	113	81	83	86	63	64	63	51	51	41	31	23	35	12	40
Falkirk	1,107	809	801	753	815	661	669	647	678	665	589	574	567	513	454	435	405	355	346	277	287	246	204	217	166	165	116	111	44	179
Fife	2,818	2,134	2,066	2,038	1,915	1,837	1,605	1,628	1,624	1,505	1,488	1,412	1,360	1,264	1,180	1,126	1,004	932	857	796	815	662	563	547	377	380	358	308	168	560
Glasgow City	2,956	2,337	2,226	2,201	2,157	2,055	1,884	1,965	1,910	1,899	1,820	1,740	1,690	1,473	1,449	1,471	1,376	1,246	1,159	956	857	875	708	648	516	469	421	349	196	631
Highland	1,754	1,411	1,373	1,410	1,352	1,282	1,026	1,121	1,028	1,038	924	883	837	849	764	733	705	657	612	476	468	459	399	374	277	250	225	179	106	335
Inverclyde	551	480	423	455	428	363	372	339	350	364	301	319	306	282	248	268	226	205	200	181	134	145	123	126	77	59	70	60	35	113
Midlothian	597	471	497	439	408	359	365	342	364	344	315	318	293	252	232	240	253	193	201	159	186	125	97	113	83	64	70	94	21	92
Moray	655	530	505	524	481	478	429	454	422	406	394	374	380	373	328	269	280	257	266	220	168	170	143	133	107	90	83	91	46	156
North Ayrshire	1,077	824	757	832	763	669	638	727	697	659	558	590	537	485	465	457	408	369	316	267	245	256	202	177	178	123	124	90	57	205
North Lanarkshire	2,089	1,644	1,504	1,630	1,548	1,379	1,326	1,364	1,322	1,249	1,112	1,116	1,073	965	926	897	775	741	651	555	530	486	366	332	271	254	205	185	124	322
Orkney Islands	184	124	108	150	132	133	98	136	113	106	77	81	93	77	66	59	53	65	66	52	34	40	34	41	23	28	21	12	10	23
Perth & Kinross	1,152	958	844	884	823	781	694	736	760	665	665	630	642	577	565	542	524	450	402	394	350	326	245	254	229	188	168	137	93	314
Renfrewshire	1,247	855	851	923	834	775	757	725	706	684	646	643	626	538	459	529	488	437	422	364	310	311	265	207	180	187	119	149	57	245
Scottish Borders	1,001	747	708	730	746	595	552	583	641	564	532	549	463	442	409	419	412	382	334	330	264	250	229	180	169	139	137	120	80	170
Shetland Islands	198	130	124	137	136	125	100	116	99	83	89	92	64	90	54	58	69	62	58	34	35	34	43	32	25	17	25	27	11	37
South Ayrshire	929	698	717	677	697	624	575	603	557	553	583	537	515	446	470	443	386	348	321	283	268	292	219	218	174	188	134	107	63	239
South Lanarkshire	2,126	1,630	1,572	1,565	1,559	1,381	1,320	1,317	1,292	1,286	1,219	1,200	1,051	1,010	978	915	833	773	677	607	583	526	421	409	286	245	248	238	138	423
Stirling	672	528	419	491	467	415	394	403	422	354	378	338	338	291	300	267	248	214	185	176	167	129	148	137	86	83	82	71	41	146
West Dunbartonshire	591	537	472	489	390	366	345	339	368	360	328	320	316	287	270	263	230	218	225	180	126	131	137	97	69	75	72	47	42	133
West Lothian	1,090	878	846	819	757	719	667	657	673	612	612	547	553	457	392	391	344	332	290	258	257	203	208	136	120	96	103	88	49	133
<b>NHS Board areas</b>																														
Ayrshire & Arran	2,931	2,213	2,148	2,206	2,097	1,856	1,781	1,872	1,842	1,746	1,634	1,601	1,518	1,354	1,348	1,271	1,155	1,020	908	821	739	760	618	555	494	422	355	297	184	606
Borders	1,001	747	708	730	746	595	552	583	641	564	532	549	463	442	409	419	412	382	334	330	264	250	229	180	169	139	137	120	80	170
Dumfries & Galloway	1,320	1,049	984	1,033	966	948	862	906	821	841	848	763	662	664	684	614	576	534	468	404	413	382	335	241	241	203	170	156	90	283
Fife	2,818	2,134	2,066	2,037	1,914	1,836	1,605	1,628	1,623	1,504	1,488	1,412	1,359	1,264	1,180	1,126	1,003	932	856	796	815	662	563	547	377	380	358	308	168	559
Forth Valley	2,160	1,636	1,507	1,535	1,537	1,303	1,266	1,255	1,289	1,243	1,178	1,081	1,077	960	922	867	763	693	633	562	544	451	409	415	297	289	238	212	104	369
Grampian	3,917	3,070	2,666	2,798	2,657	2,495	2,226	2,372	2,240	2,247	2,076	1,999	1,946	1,878	1,716	1,609	1,520	1,405	1,330	1,085	1,076	927	903	756	554	544	506	493	242	823
Greater Glasgow	7,243	5,733	5,369	5,428	5,143	4,743	4,510	4,539	4,464	4,432	4,212	4,098	3,950	3,513	3,297	3,396	3,098	2,842	2,682	2,273	1,934	1,966	1,608	1,435	1,170	1,051	919	817	460	1,468
Highland	2,557	2,006	2,020	2,057	1,956	1,867	1,560	1,674	1,545	1,509	1,398	1,335	1,245	1,219	1,129	1,080	1,038	930	909	744	677	647	587	517	416	345	327	277	165	515
Lanarkshire	3,734	2,886	2,725	2,832	2,736	2,469	2,359	2,385	2,354	2,289	2,063	2,039	1,870	1,767	1,706	1,619	1,437	1,343	1,167	1,027	991	907	714	671	479	437	390	372	224	692
Lothian	5,141	3,847	3,749	3,654	3,429	3,156	3,032	3,009	2,979	2,945	2,789	2,729	2,592	2,423	2,253	2,164	2,126	1,875	1,772	1,588	1,490	1,302	1,158	1,013	863	795	732	667	385	1,160
Orkney	184	124	108	150	132	133	98	136	1																					

Table 2 (continued)

FEMALES (continued)

Area	Age																													
	61	62	63	64	65	66	67	68	69	70	71	72	73	74	75	76	77	78	79	80	81	82	83	84	85	86	87	88	89	90+
<b>SCOTLAND</b>	<b>38,397</b>	<b>29,344</b>	<b>28,427</b>	<b>28,924</b>	<b>28,639</b>	<b>26,585</b>	<b>25,163</b>	<b>25,915</b>	<b>25,367</b>	<b>24,880</b>	<b>24,286</b>	<b>23,934</b>	<b>23,183</b>	<b>22,043</b>	<b>21,283</b>	<b>21,299</b>	<b>20,415</b>	<b>19,467</b>	<b>18,301</b>	<b>16,473</b>	<b>15,715</b>	<b>15,352</b>	<b>13,775</b>	<b>12,852</b>	<b>11,364</b>	<b>10,749</b>	<b>9,950</b>	<b>9,337</b>	<b>5,733</b>	<b>23,638</b>
<b>Council areas</b>																														
Aberdeen City	1,407	1,038	923	942	961	945	859	961	895	869	882	901	842	834	847	890	829	781	758	679	628	602	552	535	464	421	423	358	196	870
Aberdeenshire	1,923	1,492	1,348	1,326	1,308	1,253	1,085	1,163	1,087	1,023	1,003	998	920	919	861	833	806	781	745	713	620	595	600	595	492	457	400	453	227	1,121
Angus	1,039	717	731	725	699	652	582	651	587	607	590	566	585	551	477	530	524	451	464	403	409	406	353	335	294	274	233	216	132	609
Argyll & Bute	944	664	602	620	575	586	547	617	558	508	526	494	489	447	452	461	396	401	367	336	315	336	285	274	220	224	220	201	154	516
Clackmannanshire	420	288	310	302	294	269	245	233	252	220	268	230	202	162	168	173	162	187	152	130	119	123	106	119	95	105	95	72	56	148
Dumfries & Galloway	1,356	1,056	1,071	1,047	1,103	1,006	960	937	940	844	879	853	804	788	759	720	682	690	679	595	591	507	501	424	414	372	324	280	183	851
Dundee City	1,036	771	750	661	682	696	733	692	709	753	699	719	666	693	668	694	641	610	565	521	477	514	490	451	400	367	303	312	189	713
East Ayrshire	995	711	755	709	697	682	640	664	567	603	629	570	564	553	541	514	480	449	391	363	323	363	284	254	248	244	231	192	127	507
East Dunbartonshire	835	650	677	661	628	593	575	572	601	569	580	516	525	510	481	448	428	412	397	384	376	326	310	274	233	249	197	177	125	458
East Lothian	705	554	542	612	528	517	504	507	481	509	432	469	465	431	405	388	380	385	365	320	320	319	252	249	227	216	213	208	79	500
East Renfrewshire	702	470	509	543	528	439	453	451	428	474	426	455	433	416	384	426	380	367	356	326	338	297	237	255	204	222	194	172	116	445
Edinburgh, City of	2,996	2,209	1,983	2,030	2,037	1,855	1,766	1,867	1,871	1,958	1,821	1,847	1,792	1,733	1,757	1,790	1,739	1,647	1,541	1,478	1,443	1,396	1,216	1,176	1,088	1,043	1,000	923	554	2,322
Eilean Siar	221	167	162	156	185	147	180	175	144	150	158	144	131	140	152	123	107	119	122	111	103	99	93	91	77	94	85	64	43	173
Falkirk	1,102	830	832	859	821	790	758	739	824	729	707	664	658	607	598	573	569	547	503	432	430	387	407	350	292	263	267	271	146	547
Fife	2,893	2,245	2,172	2,278	2,123	1,944	1,750	1,865	1,811	1,684	1,749	1,746	1,600	1,536	1,444	1,386	1,387	1,401	1,225	1,154	1,125	1,141	1,030	943	854	764	734	678	483	1,925
Glasgow City	3,137	2,517	2,408	2,419	2,545	2,262	2,376	2,431	2,486	2,462	2,402	2,435	2,639	2,378	2,269	2,430	2,229	2,096	1,985	1,798	1,624	1,599	1,414	1,273	1,166	1,125	1,040	1,019	599	2,429
Highland	1,739	1,397	1,346	1,412	1,417	1,277	1,228	1,234	1,128	1,159	1,079	1,077	1,016	932	946	944	897	808	852	742	729	673	603	593	508	477	454	377	255	1,099
Inverclyde	589	494	458	488	501	413	419	438	427	423	422	425	363	358	371	383	398	355	343	252	270	271	207	197	216	197	185	165	116	427
Midlothian	690	526	472	490	444	405	399	409	395	403	352	385	364	346	295	329	295	293	273	225	203	198	200	192	169	125	164	132	72	324
Moray	746	516	551	537	550	516	466	476	428	468	429	407	469	435	399	379	391	316	298	300	286	266	258	229	192	194	138	158	101	384
North Ayrshire	1,169	863	837	885	847	855	778	820	699	750	680	669	667	654	627	602	574	530	521	465	390	427	337	305	302	285	310	254	148	635
North Lanarkshire	2,164	1,739	1,727	1,817	1,840	1,554	1,519	1,603	1,596	1,499	1,484	1,361	1,292	1,238	1,136	1,145	1,106	1,011	865	813	810	703	680	537	501	472	410	274	1,082	
Orkney Islands	158	121	133	133	142	150	105	141	103	110	106	89	88	89	73	83	84	81	64	66	58	61	60	41	37	45	44	37	36	120
Perth & Kinross	1,224	924	951	895	936	907	776	786	837	743	762	744	713	646	604	638	642	600	601	503	571	496	463	457	402	354	299	315	179	873
Renfrewshire	1,247	993	978	1,016	920	886	858	812	898	855	879	811	805	764	679	690	696	663	562	498	467	509	436	381	352	317	258	291	165	685
Scottish Borders	1,030	769	719	760	778	668	663	660	685	635	618	545	573	541	531	518	505	468	412	395	384	370	342	307	269	278	251	237	138	537
Shetland Islands	140	122	145	112	139	134	103	108	85	101	95	77	94	76	76	77	60	66	71	79	64	56	69	44	47	64	47	39	17	117
South Ayrshire	977	779	775	765	750	734	623	679	623	660	643	637	599	588	564	557	558	518	472	428	429	448	393	362	293	284	274	287	152	754
South Lanarkshire	2,284	1,758	1,681	1,786	1,749	1,665	1,571	1,601	1,559	1,502	1,492	1,496	1,358	1,347	1,333	1,259	1,247	1,189	1,169	989	921	889	776	736	666	606	523	531	322	1,202
Stirling	717	508	489	532	489	500	440	442	460	422	429	409	383	363	353	382	332	341	297	287	244	256	269	205	176	202	192	164	97	401
West Dunbartonshire	651	504	490	518	525	472	433	439	458	411	437	419	406	380	433	402	369	380	327	279	307	286	235	230	204	173	179	176	125	392
West Lothian	1,161	952	900	888	898	813	769	742	745	690	613	653	609	534	498	543	483	429	413	357	338	326	294	295	226	207	201	168	127	472
<b>NHS Board areas</b>																														
Ayrshire & Arran	3,141	2,353	2,367	2,359	2,294	2,271	2,041	2,163	1,889	2,013	1,952	1,876	1,830	1,795	1,732	1,673	1,612	1,497	1,384	1,256	1,142	1,238	1,014	921	843	813	815	733	427	1,896
Borders	1,030	769	719	760	778	668	663	660	685	635	618	545	573	541	531	518	505	468	412	395	384	370	342	307	269	278	251	237	138	537
Dumfries & Galloway	1,356	1,056	1,071	1,047	1,103	1,006	960	937	940	844	879	853	804	788	759	720	682	690	679	595	591	507	501	424	414	372	324	280	183	851
Fife	2,890	2,243	2,172	2,277	2,122	1,944	1,750	1,864	1,811	1,684	1,749	1,746	1,600	1,535	1,443	1,386	1,387	1,401	1,225	1,154	1,125	1,141	1,030	942	854	764	734	678	483	1,925
Forth Valley	2,238	1,624	1,625	1,692	1,605	1,560	1,443	1,413	1,529	1,368	1,405	1,299	1,241	1,130	1,120	1,125	1,059	1,071	949	847	794	766	780	673	564	569	550	504	294	1,087
Grampian	4,076	3,046	2,822	2,805	2,819	2,714	2,410	2,600	2,410	2,360	2,314	2,306	2,231	2,188	2,107	2,102	2,026	1,878	1,801	1,692	1,534	1,463	1,410	1,359	1,148	1,072	961	969	524	2,375
Greater Glasgow	7,668	6,066	5,901	6,065	6,031	5,402	5,464	5,511	5,687	5,540	5,485	5,387	5,473	5,134	4,942	5,061	4,781	4,539	4,245	3,770	3,621	3,508	3,027	2,778	2,540	2,436	2,202	2,125	1,317	5,099
Highland	2,683	2,061	1,948	2,032	1,992	1,863	1,775	1,851	1,686	1,667	1,605	1,571	1,505	1,379	1,398	1,405	1,293	1,209	1,219	1,078	1,044	1,009	888	867	728	701	674	578	409	1,615
Lanarkshire	3,946	3,059	3,035	3,187	3,204	2,884	2,742	2,841	2,774	2,746	2,651	2,659	2,420	2,313	2,247	2,114	2,115	2,031	1,907	1,623	1,494	1,481	1,295	1,248	1,038	956	849	817	528	2,059
Lothian	5,548	4,244	3,895	4,019	3,907	3,588																								

**Table 3 Estimated population by sex, five year age group and administrative area: 30 June 2008**

Area	Age group																			Area	
	All Ages	0 - 4	5 - 9	10 - 14	15 - 19	20 - 24	25 - 29	30 - 34	35 - 39	40 - 44	45 - 49	50 - 54	55 - 59	60 - 64	65 - 69	70 - 74	75 - 79	80 - 84	85 - 89		90+
<b>SCOTLAND</b>	<b>5,168,500</b>	<b>282,972</b>	<b>269,480</b>	<b>297,754</b>	<b>327,435</b>	<b>354,053</b>	<b>334,831</b>	<b>299,272</b>	<b>363,027</b>	<b>402,888</b>	<b>392,085</b>	<b>350,577</b>	<b>325,201</b>	<b>312,382</b>	<b>247,796</b>	<b>215,568</b>	<b>173,347</b>	<b>119,349</b>	<b>69,292</b>	<b>31,191</b>	<b>SCOTLAND</b>
<b>Council areas</b>																					<b>Council areas</b>
Aberdeen City	210,400	10,981	9,787	10,126	12,573	18,365	18,801	14,808	14,954	15,187	15,179	13,959	12,499	10,986	8,637	7,929	6,963	4,749	2,751	1,166	Aberdeen City
Aberdeenshire	241,460	13,849	13,897	15,352	15,220	12,416	10,985	12,544	17,988	20,226	19,383	18,422	17,039	15,867	11,606	9,481	7,348	5,283	3,062	1,492	Aberdeenshire
Angus	110,310	5,880	5,927	6,606	6,687	5,614	4,905	5,248	7,364	8,375	8,633	7,683	7,888	7,960	6,152	5,376	4,326	3,106	1,744	836	Angus
Argyll & Bute	90,500	4,000	4,389	5,382	5,628	4,698	3,872	3,966	5,823	6,951	6,945	6,578	6,556	6,955	5,676	4,639	3,692	2,542	1,512	696	Argyll & Bute
Clackmannanshire	50,480	2,978	2,815	3,115	3,287	3,071	2,762	2,873	3,684	4,166	3,900	3,454	3,328	3,326	2,377	2,029	1,518	995	603	199	Clackmannanshire
Dumfries & Galloway	148,580	7,383	7,121	8,824	8,772	7,289	6,238	6,420	9,191	11,208	11,474	10,639	10,940	11,320	9,449	7,946	6,406	4,393	2,433	1,134	Dumfries & Galloway
Dundee City	142,470	7,862	6,742	7,414	9,707	13,402	11,206	7,460	8,575	9,470	9,964	8,841	8,123	8,051	6,704	6,314	5,378	3,916	2,361	980	Dundee City
East Ayrshire	119,920	6,543	6,271	7,070	8,103	7,332	6,385	6,362	8,595	9,788	9,072	8,077	7,976	7,917	6,148	5,309	4,094	2,653	1,556	669	East Ayrshire
East Dunbartonshire	104,720	5,070	5,824	6,889	7,154	6,201	5,075	4,117	6,314	8,072	8,921	8,037	7,149	6,879	5,466	4,952	3,873	2,641	1,457	629	East Dunbartonshire
East Lothian	96,100	5,813	5,444	6,227	6,426	5,012	3,955	4,701	7,065	8,028	7,630	6,750	6,051	6,094	4,786	4,234	3,411	2,415	1,409	649	East Lothian
East Renfrewshire	89,220	4,926	5,468	6,269	6,118	5,220	3,903	3,596	5,493	7,216	7,655	6,682	5,653	5,438	4,239	3,947	3,228	2,308	1,304	557	East Renfrewshire
Edinburgh, City of	471,650	23,330	20,602	21,817	27,401	44,845	49,577	37,764	34,828	34,256	32,301	28,039	25,428	22,852	17,441	16,397	14,307	10,560	6,795	3,110	Edinburgh, City of
Eilean Siar	26,200	1,298	1,341	1,567	1,538	1,113	1,119	1,288	1,734	1,994	1,987	1,882	1,941	1,866	1,581	1,362	1,082	789	505	213	Eilean Siar
Falkirk	151,570	8,994	8,373	8,940	8,630	8,690	9,112	9,390	11,467	12,528	11,466	9,905	9,702	9,111	7,402	6,273	4,783	3,237	1,841	726	Falkirk
Fife	361,890	20,218	19,206	21,068	23,528	25,112	20,374	19,124	25,069	28,029	27,000	24,393	23,202	23,814	18,102	15,344	11,942	8,776	5,104	2,485	Fife
Glasgow City	584,240	32,579	27,852	29,448	36,980	53,663	56,583	44,772	43,479	43,436	42,024	35,733	29,161	26,099	22,071	20,938	17,710	11,752	6,900	3,060	Glasgow City
Highland	219,400	11,651	11,574	13,137	13,016	10,807	11,072	11,258	14,401	17,342	17,270	16,403	16,254	15,352	12,093	9,794	7,918	5,516	3,108	1,434	Highland
Inverclyde	80,780	4,306	4,128	4,769	5,240	5,396	4,611	4,003	5,153	6,323	6,614	5,692	5,290	5,019	4,050	3,563	2,997	1,906	1,180	540	Inverclyde
Midlothian	80,560	4,657	4,668	5,009	5,374	4,895	4,108	4,117	5,681	6,382	6,344	5,605	5,425	5,321	3,890	3,372	2,604	1,698	994	416	Midlothian
Moray	87,770	4,582	4,423	5,469	5,723	4,859	4,192	4,489	6,513	7,031	6,763	6,092	5,865	5,838	4,700	4,135	3,183	2,173	1,200	540	Moray
North Ayrshire	135,920	7,446	7,209	8,380	8,926	8,110	7,120	6,849	8,921	10,519	10,162	9,401	9,177	9,307	7,493	6,249	4,869	3,071	1,871	840	North Ayrshire
North Lanarkshire	325,520	19,979	18,989	20,216	21,153	21,309	20,759	19,461	24,461	26,441	24,539	21,949	19,644	18,429	15,051	12,737	9,626	6,140	3,233	1,404	North Lanarkshire
Orkney Islands	19,890	990	978	1,267	1,250	910	917	930	1,279	1,641	1,591	1,475	1,457	1,419	1,253	916	694	487	293	143	Orkney Islands
Perth & Kinross	144,180	7,075	7,507	8,547	8,632	9,092	7,545	6,821	9,056	11,159	10,810	9,947	9,963	10,025	8,036	6,787	5,568	4,059	2,364	1,187	Perth & Kinross
Renfrewshire	169,800	9,572	9,087	9,887	10,781	10,878	10,387	9,042	11,811	14,114	13,746	11,603	10,809	10,283	8,171	7,251	5,625	3,748	2,075	930	Renfrewshire
Scottish Borders	112,430	5,928	6,089	6,671	6,750	5,220	4,629	5,153	7,672	9,164	8,974	8,037	7,897	8,247	6,571	5,462	4,390	3,051	1,818	707	Scottish Borders
Shetland Islands	21,980	1,228	1,279	1,439	1,453	1,054	1,149	1,301	1,559	1,702	1,692	1,538	1,545	1,421	1,145	861	651	490	319	154	Shetland Islands
South Ayrshire	111,670	5,380	5,495	6,295	6,791	6,423	5,319	5,017	6,960	8,314	8,535	8,110	7,918	7,961	6,465	5,761	4,637	3,340	1,956	993	South Ayrshire
South Lanarkshire	310,090	17,486	16,957	18,645	19,657	19,491	18,310	17,085	22,173	24,748	24,426	22,309	19,725	18,445	15,014	12,961	10,373	6,857	3,803	1,625	South Lanarkshire
Stirling	88,350	4,658	4,955	5,571	6,820	6,721	4,335	3,915	6,024	6,972	6,648	5,715	5,624	5,577	4,432	3,705	2,919	2,018	1,194	547	Stirling
West Dunbartonshire	90,940	5,198	4,687	5,322	6,036	6,468	5,654	4,950	6,062	7,253	7,035	6,492	5,670	5,482	4,155	3,664	3,117	2,008	1,162	525	West Dunbartonshire
West Lothian	169,510	11,132	10,396	11,016	11,081	10,377	9,872	10,448	13,678	14,853	13,402	11,135	10,302	9,721	7,440	5,880	4,115	2,672	1,385	605	West Lothian
<b>NHS Board areas</b>																					<b>NHS Board areas</b>
Ayrshire & Arran	367,510	19,369	18,975	21,745	23,820	21,865	18,824	18,228	24,476	28,621	27,769	25,588	25,071	25,185	20,106	17,319	13,600	9,064	5,383	2,502	Ayrshire & Arran
Borders	112,430	5,928	6,089	6,671	6,750	5,220	4,629	5,153	7,672	9,164	8,974	8,037	7,897	8,247	6,571	5,462	4,390	3,051	1,818	707	Borders
Dumfries & Galloway	148,580	7,383	7,121	8,824	8,772	7,289	6,238	6,420	9,191	11,208	11,474	10,639	10,940	11,320	9,449	7,946	6,406	4,393	2,433	1,134	Dumfries & Galloway
Fife	361,815	20,218	19,205	21,057	23,522	25,108	20,374	19,123	25,065	28,021	26,992	24,388	23,196	23,806	18,097	15,341	11,939	8,775	5,104	2,484	Fife
Forth Valley	290,447	16,623	16,136	17,606	19,724	18,463	16,199	16,153	21,147	23,639	21,993	19,053	18,621	17,988	14,200	11,982	9,202	6,241	3,621	1,456	Forth Valley
Grampian	539,630	29,412	28,107	30,947	33,516	35,640	33,978	31,841	39,455	42,444	41,325	38,473	35,403	32,691	24,943	21,545	17,494	12,205	7,013	3,198	Grampian
Greater Glasgow & Clyde	1,194,675	66,268	61,167	66,876	76,896	92,482	91,010	75,125	83,976	92,256	91,757	79,687	68,505	63,545	51,494	47,224	38,883	25,920	15,037	6,567	Greater Glasgow & Clyde
Highland	309,900	15,651	15,963	18,519	18,644	15,505	14,944	15,224	20,224	24,293	24,215	22,981	22,810	22,307	17,769	14,433	11,610	8,058	4,620	2,130	Highland
Lanarkshire	561,174	32,879	31,848	34,606	36,253	36,121	34,247	31,917	41,024	45,400	43,264	38,851	34,645	32,576	26,748	22,817	17,686	11,451	6,090	2,751	Lanarkshire
Lothian	817,727	44,916	41,096	44,057	50,271	65,172	67,552	57,035	61,227	63,497	59,644	51,510	47,192	43,973	33,550	29,882	24,440	17,347	10,586	4,780	Lothian
Orkney	19,890	990	978	1,267	1,250	910	917	930	1,279	1,641	1,591	1,475	1,457	1,419	1,253	916	694	487	293	143	Orkney
Shetland	21,980	1,228	1,279	1,439	1,453	1,054	1,149	1,301	1,559	1,702	1,692	1,538	1,545	1,421	1,145	861	651	490	319	154	Shetland
Tayside	396,942	20,809	20,175	22,573	25,026	28,111	23,651	19,534	24,998	29,008	29,408	26,475	25,978	26,038	20,890	18,478	15,270	11,078	6,470	2,972	Tayside

Table 3 (continued)

MALES

Area	Age group																			Area	
	All Ages	0 - 4	5 - 9	10 - 14	15 - 19	20 - 24	25 - 29	30 - 34	35 - 39	40 - 44	45 - 49	50 - 54	55 - 59	60 - 64	65 - 69	70 - 74	75 - 79	80 - 84	85 - 89		90+
<b>SCOTLAND</b>	<b>2,500,205</b>	<b>145,152</b>	<b>137,691</b>	<b>152,400</b>	<b>167,839</b>	<b>179,889</b>	<b>169,947</b>	<b>147,211</b>	<b>174,309</b>	<b>193,261</b>	<b>189,434</b>	<b>170,891</b>	<b>159,342</b>	<b>151,994</b>	<b>116,127</b>	<b>97,242</b>	<b>72,582</b>	<b>45,182</b>	<b>22,159</b>	<b>7,553</b>	
<b>Council areas</b>																					<b>Council areas</b>
Aberdeen City	103,972	5,539	5,063	5,300	6,104	8,649	10,182	8,134	7,635	7,615	7,489	7,123	6,323	5,403	4,016	3,601	2,858	1,753	889	296	Aberdeen City
Aberdeenshire	119,820	7,216	7,145	7,966	7,849	6,672	5,664	5,920	8,587	9,921	9,703	9,296	8,627	8,040	5,710	4,618	3,322	2,160	1,033	371	Aberdeenshire
Angus	53,390	3,005	3,042	3,366	3,529	2,999	2,513	2,489	3,481	3,992	4,187	3,708	3,857	3,862	2,981	2,477	1,880	1,200	595	227	Angus
Argyll & Bute	45,057	2,064	2,205	2,786	2,941	2,799	2,280	2,038	2,925	3,443	3,463	3,303	3,196	3,362	2,793	2,175	1,615	996	493	180	Argyll & Bute
Clackmannanshire	24,676	1,532	1,466	1,567	1,678	1,658	1,414	1,380	1,794	2,025	1,946	1,636	1,163	1,631	1,084	947	676	398	180	51	Clackmannanshire
Dumfries & Galloway	71,926	3,788	3,703	4,486	4,546	3,829	3,016	3,072	4,365	5,386	5,492	5,153	5,400	5,615	4,503	3,778	2,876	1,775	860	283	Dumfries & Galloway
Dundee City	67,540	4,002	3,446	3,850	4,648	6,471	5,746	3,665	3,988	4,316	4,572	4,316	3,910	3,914	3,192	2,784	2,200	1,463	790	267	Dundee City
East Ayrshire	58,003	3,427	3,135	3,717	4,124	3,777	3,119	3,104	4,130	4,669	4,332	3,921	3,965	3,834	2,898	2,390	1,719	1,066	514	162	East Ayrshire
East Dunbartonshire	50,473	2,644	3,007	3,605	3,817	3,310	2,780	1,903	2,893	3,685	4,191	3,840	3,416	3,308	2,497	2,252	1,707	971	476	171	East Dunbartonshire
East Lothian	45,968	2,997	2,759	3,144	3,186	2,644	1,923	2,111	3,321	3,813	3,697	3,330	2,851	2,957	2,249	1,928	1,488	955	466	149	East Lothian
East Renfrewshire	42,660	2,503	2,848	3,238	3,221	2,822	2,034	1,639	2,473	3,254	3,691	3,263	2,735	2,578	1,940	1,743	1,315	855	396	112	East Renfrewshire
Edinburgh, City of	227,922	12,069	10,592	11,295	13,891	21,248	24,640	19,175	17,393	16,772	15,616	13,875	12,389	11,017	8,045	7,246	5,833	3,851	2,187	788	Edinburgh, City of
Eilean Siar	12,881	656	674	760	837	628	555	636	861	989	1,019	957	999	988	750	639	459	292	142	40	Eilean Siar
Falkirk	73,367	4,550	4,284	4,579	5,077	4,419	4,438	4,577	5,457	6,090	5,573	4,830	4,670	4,438	3,470	2,908	1,995	1,231	602	179	Falkirk
Fife	174,643	10,312	9,919	10,593	11,921	12,791	10,238	9,191	12,091	13,513	13,171	11,890	11,213	11,529	8,609	7,029	5,099	3,383	1,591	560	Fife
Glasgow City	281,709	16,687	14,150	15,123	18,678	26,707	28,747	23,139	21,533	20,551	20,118	17,271	14,437	12,648	9,971	8,622	6,701	4,044	1,951	631	Glasgow City
Highland	107,636	5,986	6,022	6,734	6,833	5,962	5,591	5,564	6,794	8,391	8,493	8,127	8,098	7,682	5,809	4,531	3,471	2,176	1,037	335	Highland
Inverclyde	38,592	2,274	2,110	2,412	2,758	2,788	2,341	1,940	2,384	2,912	3,166	2,789	2,605	2,419	1,852	1,572	1,147	709	301	113	Inverclyde
Midlothian	38,297	2,366	2,321	2,534	2,786	2,503	2,005	1,878	2,661	2,925	2,921	2,653	2,608	2,553	1,838	1,522	1,119	680	332	92	Midlothian
Moray	44,404	2,375	2,340	2,821	3,075	2,808	2,400	2,362	3,373	3,617	3,929	3,000	2,911	2,845	2,264	1,927	1,400	834	417	156	Moray
North Ayrshire	64,448	3,839	3,634	4,244	4,671	4,105	3,479	3,184	4,091	4,879	4,745	4,450	4,397	4,468	3,494	2,829	2,015	1,147	572	205	North Ayrshire
North Lanarkshire	156,516	10,328	9,707	10,328	10,867	10,744	10,449	9,331	11,548	12,706	11,642	10,478	9,503	8,811	6,939	5,515	3,990	2,269	1,039	322	North Lanarkshire
Orkney Islands	9,789	496	489	656	641	487	465	434	618	826	816	736	740	712	612	434	309	201	94	23	Orkney Islands
Perth & Kinross	70,394	3,650	3,846	4,309	4,585	4,857	4,115	3,397	4,201	5,388	5,306	4,807	4,835	4,944	3,794	3,179	2,483	1,569	815	314	Perth & Kinross
Renfrewshire	81,137	4,850	4,588	5,104	5,501	5,532	5,205	4,332	5,438	6,694	6,531	5,578	5,192	4,929	3,797	3,137	2,335	1,457	692	245	Renfrewshire
Scottish Borders	54,451	3,012	3,088	3,383	3,429	2,660	2,307	2,455	3,695	4,480	4,342	3,948	3,902	4,059	3,117	2,550	1,956	1,253	645	170	Scottish Borders
Shetland Islands	11,099	641	644	721	771	608	611	629	779	868	870	769	802	771	576	418	301	178	105	37	Shetland Islands
South Ayrshire	53,381	2,698	2,860	3,129	3,521	3,289	2,761	2,354	3,303	3,984	4,070	3,877	3,876	3,816	3,056	2,634	1,968	1,280	666	239	South Ayrshire
South Lanarkshire	148,371	8,896	8,489	9,496	10,185	10,062	9,216	8,103	10,492	11,665	11,675	10,704	9,662	8,791	6,869	5,766	4,176	2,546	1,155	423	South Lanarkshire
Stirling	42,189	2,406	2,542	2,856	3,355	3,435	2,104	1,689	2,679	3,297	3,247	2,786	2,808	2,705	2,101	1,699	1,214	757	363	146	Stirling
West Dunbartonshire	43,144	2,656	2,350	2,777	3,113	3,308	2,786	2,335	2,808	3,429	3,337	3,062	2,777	2,652	1,828	1,611	1,206	671	305	133	West Dunbartonshire
West Lothian	82,350	5,688	5,223	5,521	5,701	5,318	4,823	5,051	6,518	7,166	6,534	5,415	5,025	4,713	3,473	2,781	1,749	1,062	456	133	West Lothian
<b>NHS Board areas</b>																					<b>NHS Board areas</b>
Ayrshire & Arran	175,832	9,964	9,629	11,090	12,316	11,171	9,359	8,642	11,524	13,532	13,147	12,248	12,238	12,118	9,448	7,853	5,702	3,493	1,752	606	Ayrshire & Arran
Borders	54,451	3,012	3,088	3,383	3,429	2,660	2,307	2,455	3,695	4,480	4,342	3,948	3,902	4,059	3,117	2,550	1,956	1,253	645	170	Borders
Dumfries & Galloway	71,926	3,788	3,703	4,486	4,546	3,829	3,016	3,072	4,365	5,386	5,492	5,153	5,400	5,615	4,503	3,778	2,876	1,775	860	283	Dumfries & Galloway
Fife	174,608	10,312	9,919	10,586	11,918	12,790	10,237	9,191	12,090	13,512	13,165	11,889	11,209	11,527	8,606	7,027	5,097	3,383	1,591	559	Fife
Forth Valley	140,043	8,486	8,288	8,995	10,099	9,499	7,949	7,628	9,914	11,394	10,754	9,247	9,071	8,762	6,650	5,539	3,878	2,381	1,140	369	Forth Valley
Grampian	268,196	15,130	14,548	16,087	18,129	18,246	16,416	19,595	21,153	20,671	19,419	17,861	16,288	11,990	10,146	7,580	4,747	2,339	823	823	Grampian
Greater Glasgow & Clyde	573,021	33,952	31,152	34,387	39,384	46,779	46,273	37,396	40,190	43,227	43,772	38,377	33,505	30,607	23,399	20,205	15,315	9,216	4,417	1,468	Greater Glasgow & Clyde
Highland	152,693	8,050	8,227	9,520	9,774	8,761	7,871	7,602	9,719	11,834	11,956	11,430	11,294	11,044	8,602	6,706	5,086	3,172	1,530	515	Highland
Lanarkshire	269,818	16,902	16,113	17,706	18,777	18,478	17,266	15,326	19,414	21,694	20,606	18,625	16,849	15,555	12,303	10,028	7,272	4,310	1,902	692	Lanarkshire
Lothian	394,510	23,111	20,883	22,492	25,554	31,741	33,418	28,229	29,872	30,671	28,758	25,261	22,865	21,229	15,605	13,478	10,190	6,551	3,442	1,160	Lothian
Orkney	9,789	496	489	656	641	487	465	434	618	826	816	736	740	712	612	434	309	201	94	23	Orkney
Shetland	11,099	641	644	721	771	608	611	629	779	868	870	769	802	771	576	418	301	178	105	37	Shetland
Tayside	191,338	10,652	10,334	11,531	12,765	14,329	12,374	9,555	11,673	13,695	14,066	12,832	12,607	12,719	9,966	8,441	6,561	4,230	2,200	808	Tayside
Western Isles	12,922	656	674	760	837	628	555	636	861	989	1,019	957	999	988	750	639	459	292	142	40	Western Isles

Table 3 (continued)

FEMALES

Area	Age group																			Area	
	All Ages	0 - 4	5 - 9	10 - 14	15 - 19	20 - 24	25 - 29	30 - 34	35 - 39	40 - 44	45 - 49	50 - 54	55 - 59	60 - 64	65 - 69	70 - 74	75 - 79	80 - 84	85 - 89		90+
<b>Council areas</b>	<b>2,668,295</b>	<b>137,820</b>	<b>131,789</b>	<b>145,354</b>	<b>159,596</b>	<b>174,164</b>	<b>164,884</b>	<b>152,061</b>	<b>188,718</b>	<b>209,627</b>	<b>202,651</b>	<b>179,686</b>	<b>165,859</b>	<b>160,388</b>	<b>131,669</b>	<b>118,326</b>	<b>100,765</b>	<b>74,167</b>	<b>47,133</b>	<b>23,638</b>	<b>SCOTLAND</b>
																					<b>Council areas</b>
Aberdeen City	106,428	5,442	4,724	4,826	6,469	9,716	8,619	6,674	7,319	7,572	7,690	6,836	6,176	5,583	4,621	4,328	4,105	2,996	1,862	870	Aberdeen City
Aberdeenshire	121,640	6,633	6,752	7,386	7,371	5,744	5,321	6,624	9,401	10,305	9,680	9,126	8,412	7,827	5,896	4,863	4,026	3,123	2,029	1,121	Aberdeenshire
Angus	56,920	2,875	2,885	3,240	3,158	2,615	2,392	2,759	3,883	4,383	4,446	3,975	4,031	4,098	3,171	2,899	2,446	1,906	1,149	609	Angus
Argyll & Bute	45,443	1,936	2,184	2,596	2,687	1,899	1,592	1,928	2,898	3,508	3,482	3,275	3,360	3,593	2,883	2,464	2,077	1,546	1,019	516	Argyll & Bute
Clackmannanshire	25,804	1,446	1,349	1,548	1,609	1,413	1,348	1,493	1,890	2,141	1,954	1,818	1,715	1,695	1,293	1,082	842	597	423	148	Clackmannanshire
Dumfries & Galloway	76,654	3,595	3,418	4,338	4,226	3,460	3,222	3,348	4,826	5,822	5,982	5,486	5,540	5,705	4,946	4,168	3,530	2,618	1,573	851	Dumfries & Galloway
Dundee City	74,930	3,860	3,296	3,564	5,059	6,931	5,460	3,795	4,587	5,154	5,392	4,525	4,213	4,137	3,512	3,530	3,178	2,453	1,571	713	Dundee City
East Ayrshire	61,917	3,116	3,136	3,353	3,979	3,555	3,266	3,258	4,465	5,119	4,740	4,156	4,011	4,083	3,250	2,919	2,375	1,587	1,042	509	East Ayrshire
East Dunbartonshire	54,247	2,426	2,817	3,284	3,337	2,891	2,295	2,214	3,421	4,387	4,730	4,197	3,733	3,571	2,969	2,700	2,166	1,670	981	458	East Dunbartonshire
East Lothian	50,132	2,816	2,685	3,083	3,240	2,368	2,032	2,590	3,744	4,215	3,933	3,420	3,200	3,137	2,537	2,306	1,923	1,460	943	500	East Lothian
East Renfrewshire	46,560	2,423	2,620	3,031	2,897	2,398	1,869	1,957	3,020	3,962	3,964	3,419	2,918	2,860	2,299	2,204	1,913	1,453	908	445	East Renfrewshire
Edinburgh, City of	243,728	11,261	10,010	10,522	13,510	23,597	24,937	18,589	17,435	17,484	16,685	14,164	13,039	11,835	9,396	9,151	8,474	6,709	4,608	2,322	Edinburgh, City of
Eilean Siar	13,319	642	667	807	701	485	564	652	873	1,005	968	925	942	878	831	723	623	497	363	173	Eilean Siar
Falkirk	78,203	4,444	4,089	4,361	4,553	4,271	4,674	4,813	6,010	6,438	5,893	5,075	5,032	4,673	3,932	3,365	2,788	2,006	1,239	547	Falkirk
Fife	187,247	9,906	9,287	10,475	11,607	12,321	10,136	9,933	12,978	14,516	13,829	12,503	11,989	12,285	9,493	8,315	6,843	5,393	3,513	1,925	Fife
Glasgow City	302,531	15,892	13,702	14,325	18,302	26,956	27,836	21,633	21,946	22,885	21,906	18,462	14,724	13,451	12,100	12,316	11,009	7,708	4,949	2,429	Glasgow City
Highland	111,764	5,665	5,552	6,403	6,183	4,845	5,481	5,694	7,607	8,951	8,777	8,276	8,156	7,670	6,284	5,263	4,447	3,340	2,071	1,099	Highland
Inverclyde	42,188	2,032	2,018	2,357	2,482	2,608	2,270	2,063	2,769	3,411	3,448	2,903	2,685	2,600	2,198	1,991	1,850	1,197	879	427	Inverclyde
Midlothian	42,263	2,291	2,347	2,475	2,588	2,392	2,103	2,239	3,020	3,457	3,423	2,952	2,817	2,768	2,052	1,850	1,485	1,018	662	324	Midlothian
Moray	43,366	2,207	2,083	2,648	2,648	2,051	1,792	2,127	3,140	3,414	3,284	3,092	2,954	2,993	2,436	2,208	1,783	1,339	783	384	Moray
North Ayrshire	71,472	3,607	3,575	4,136	4,255	4,005	3,641	3,665	4,830	5,640	5,417	4,951	4,780	4,839	3,999	3,420	2,854	1,924	1,299	635	North Ayrshire
North Lanarkshire	169,004	9,651	9,282	9,888	10,286	10,565	10,310	10,130	12,913	13,735	12,897	11,471	10,141	9,618	8,112	7,222	5,636	3,871	2,194	1,082	North Lanarkshire
Orkney Islands	10,101	494	489	611	609	423	452	496	661	815	775	739	717	707	641	482	385	286	199	120	Orkney Islands
Perth & Kinross	73,786	3,425	3,661	4,238	4,047	4,235	3,430	3,424	4,855	5,771	5,504	5,140	5,128	5,081	4,242	3,608	3,085	2,490	1,549	873	Perth & Kinross
Renfrewshire	88,663	4,722	4,499	4,783	5,280	5,346	5,182	4,710	6,373	7,420	7,215	6,025	5,617	5,354	4,374	4,114	3,290	2,291	1,383	685	Renfrewshire
Scottish Borders	57,979	2,916	3,001	3,288	3,321	2,560	2,322	2,698	3,977	4,684	4,632	4,089	3,995	4,188	3,454	2,912	2,434	1,798	1,173	537	Scottish Borders
Shetland Islands	10,881	587	635	718	682	446	538	672	780	834	822	769	743	650	569	443	350	312	214	117	Shetland Islands
South Ayrshire	58,289	2,682	2,635	3,166	3,270	3,134	2,558	2,663	3,657	4,330	4,465	4,233	4,042	4,145	3,409	3,127	2,669	2,060	1,290	754	South Ayrshire
South Lanarkshire	161,719	8,590	8,468	9,149	9,472	9,429	9,094	8,982	11,681	13,083	12,751	11,605	10,063	9,654	8,145	7,195	6,197	4,311	2,648	1,202	South Lanarkshire
Stirling	46,161	2,252	2,413	2,715	3,465	3,286	2,231	2,226	3,345	3,675	3,401	2,929	2,816	2,872	2,331	2,006	1,705	1,261	831	401	Stirling
West Dunbartonshire	47,796	2,542	2,337	2,545	2,923	3,160	2,868	2,615	3,254	3,824	3,698	3,430	2,893	2,830	2,327	2,053	1,911	1,337	857	392	West Dunbartonshire
West Lothian	87,160	5,444	5,173	5,495	5,380	5,059	5,049	5,397	7,160	7,687	6,868	5,720	5,277	5,008	3,967	3,099	2,366	1,610	929	472	West Lothian
<b>NHS Board areas</b>																					<b>NHS Board areas</b>
Ayrshire & Arran	191,678	9,405	9,346	10,655	11,504	10,694	9,465	9,586	12,952	15,089	14,622	13,340	12,833	13,067	10,658	9,466	7,898	5,571	3,631	1,896	Ayrshire & Arran
Borders	57,979	2,916	3,001	3,288	3,321	2,560	2,322	2,698	3,977	4,684	4,632	4,089	3,995	4,188	3,454	2,912	2,434	1,798	1,173	537	Borders
Dumfries & Galloway	76,654	3,595	3,418	4,338	4,226	3,460	3,222	3,348	4,826	5,822	5,982	5,486	5,540	5,705	4,946	4,168	3,530	2,618	1,573	851	Dumfries & Galloway
Fife	187,207	9,906	9,286	10,471	11,604	12,318	10,137	9,932	12,975	14,509	13,827	12,499	11,987	12,279	9,491	8,314	6,842	5,392	3,513	1,925	Fife
Forth Valley	150,004	8,137	7,848	8,611	9,625	8,964	8,250	8,525	11,233	12,245	11,239	9,806	9,550	9,226	7,550	6,443	5,324	3,860	2,481	1,087	Forth Valley
Grampian	271,434	14,282	13,559	14,860	16,488	17,511	15,732	15,425	19,860	21,291	20,654	19,054	17,542	16,403	12,953	11,399	9,914	7,458	4,674	2,375	Grampian
Greater Glasgow & Clyde	621,654	32,316	30,015	32,489	37,512	45,703	44,737	37,729	43,786	49,029	47,985	41,310	35,000	32,938	28,095	27,019	23,568	16,704	10,620	5,099	Greater Glasgow & Clyde
Highland	157,207	7,601	7,736	8,999	8,870	6,744	7,073	7,622	10,505	12,459	12,259	11,551	11,516	11,263	9,167	7,727	6,524	4,886	3,090	1,615	Highland
Lanarkshire	291,356	15,977	15,735	16,900	17,476	17,643	16,981	16,591	21,610	23,706	22,658	20,226	17,796	17,021	14,445	12,789	10,414	7,141	4,188	2,059	Lanarkshire
Lothian	423,217	21,805	20,213	21,565	24,717	33,431	34,134	28,806	31,355	32,826	30,886	26,249	24,327	22,744	17,945	16,404	14,250	10,796	7,144	3,620	Lothian
Orkney	10,101	494	489	611	609	423	452	496	661	815	775	739	717	707	641	482	385	286	199	120	Orkney
Shetland	10,881	587	635	718	682	446	538	672	780	834	822	769	743	650	569	443	350	312	214	117	Shetland
Tayside	205,604	10,157	9,841	11,042	12,261	13,782	11,277	9,979	13,325	15,313	15,342	13,643	13,371	13,319	10,924	10,037	8,709	6,848	4,270	2,164	Tayside
Western Isles	13,319	642	667	807	701	485	564	652	873	1,005	968	925	942	878	831	723	623	497	363	173	Western Isles

**Table 4 Components of population change by administrative area: 2007-2008**

	Estimated population 30 June 2007	Births	Deaths	Natural change	Estimated <sup>1</sup> net civilian migration	Other <sup>2</sup> changes	Estimated population 30 June 2008	Population change	
								Number	%
<b>SCOTLAND</b>	<b>5,144,200</b>	<b>59,240</b>	<b>55,293</b>	<b>3,947</b>	<b>19,953</b>	<b>400</b>	<b>5,168,500</b>	<b>24,300</b>	<b>0.5</b>
<b>Council areas</b>									
Aberdeen City	209,260	2,479	2,166	313	848	-21	210,400	1,140	0.5
Aberdeenshire	239,160	2,712	2,224	488	1,813	-1	241,460	2,300	1.0
Angus	109,870	1,187	1,240	-53	520	-27	110,310	440	0.4
Argyll & Bute	91,350	772	1,108	-336	-64	-450	90,500	-850	-0.9
Clackmannanshire	49,900	661	501	160	373	47	50,480	580	1.2
Dumfries & Galloway	148,300	1,476	1,799	-323	613	-10	148,580	280	0.2
Dundee City	142,150	1,747	1,715	32	288	0	142,470	320	0.2
East Ayrshire	119,570	1,333	1,418	-85	413	22	119,920	350	0.3
East Dunbartonshire	104,850	958	970	-12	-118	0	104,720	-130	-0.1
East Lothian	94,440	1,181	1,017	164	1,496	0	96,100	1,660	1.8
East Renfrewshire	89,260	880	848	32	-72	0	89,220	-40	0.0
Edinburgh, City of	468,070	5,375	4,305	1,070	2,512	-2	471,650	3,580	0.8
Eilean Siar	26,300	250	349	-99	-1	0	26,200	-100	-0.4
Falkirk	150,720	1,913	1,592	321	519	10	151,570	850	0.6
Fife	360,500	4,300	3,808	492	1,258	-360	361,890	1,390	0.4
Glasgow City	581,940	7,248	6,851	397	1,809	94	584,240	2,300	0.4
Highland	217,440	2,363	2,327	36	1,924	0	219,400	1,960	0.9
Inverclyde	81,080	872	983	-111	-181	-8	80,780	-300	-0.4
Midlothian	79,510	957	811	146	444	460	80,560	1,050	1.3
Moray	86,870	993	901	92	348	460	87,770	900	1.0
North Ayrshire	135,760	1,518	1,638	-120	280	0	135,920	160	0.1
North Lanarkshire	324,680	4,101	3,473	628	205	7	325,520	840	0.3
Orkney Islands	19,860	202	250	-48	78	0	19,890	30	0.2
Perth & Kinross	142,140	1,425	1,507	-82	1,962	160	144,180	2,040	1.4
Renfrewshire	169,600	1,984	1,926	58	142	0	169,800	200	0.1
Scottish Borders	111,430	1,165	1,267	-102	1,102	0	112,430	1,000	0.9
Shetland Islands	21,950	239	195	44	-14	0	21,980	30	0.1
South Ayrshire	111,690	1,084	1,336	-252	232	0	111,670	-20	0.0
South Lanarkshire	309,500	3,592	3,430	162	428	0	310,090	590	0.2
Stirling	88,190	851	817	34	107	19	88,350	160	0.2
West Dunbartonshire	91,090	1,127	1,130	-3	-147	0	90,940	-150	-0.2
West Lothian	167,770	2,295	1,391	904	836	0	169,510	1,740	1.0
<b>NHS Board areas</b>									
Ayrshire & Arran	367,020	3,935	4,392	-457	925	22	367,510	490	0.1
Borders	111,430	1,165	1,267	-102	1,102	0	112,430	1,000	0.9
Dumfries & Galloway	148,300	1,476	1,799	-323	613	-10	148,580	280	0.2
Fife	360,428	4,300	3,808	492	1,255	-360	361,815	1,387	0.4
Forth Valley	288,473	3,424	2,912	512	986	76	290,047	1,574	0.5
Grampian	535,290	6,184	5,291	893	3,009	438	539,630	4,340	0.8
Greater Glasgow & Clyde	1,192,419	14,090	13,505	585	1,585	86	1,194,675	2,256	0.2
Highland	308,790	3,135	3,435	-300	1,860	-450	309,900	1,110	0.4
Lanarkshire	560,042	6,679	6,109	570	555	7	561,174	1,132	0.2
Lothian	809,764	9,805	7,525	2,280	5,225	458	817,727	7,963	1.0
Orkney	19,860	202	250	-48	78	0	19,890	30	0.2
Shetland	21,950	239	195	44	-14	0	21,980	30	0.1
Tayside	394,134	4,356	4,456	-100	2,775	133	396,942	2,808	0.7
Western Isles	26,300	250	349	-99	-1	0	26,200	-100	-0.4

<sup>1</sup> Includes movements to/from armed forces

<sup>2</sup> Includes changes in the number of prisoners and armed forces stationed in Scotland.

**Table 5 Components of migration by administrative area: 2007-2008**

	In-migration				Out-migration				Net-migration			
	Total <sup>2</sup>	within Scotland	Rest of UK <sup>1</sup>	Overseas	Total <sup>2</sup>	within Scotland	Rest of UK <sup>1</sup>	Overseas	Total <sup>3</sup>	within Scotland	Rest of UK <sup>1</sup>	Overseas
<b>SCOTLAND</b>	<b>94,165</b>	<b>n/a</b>	<b>55,665</b>	<b>38,500</b>	<b>74,189</b>	<b>n/a</b>	<b>43,389</b>	<b>30,800</b>	<b>19,976</b>	<b>0</b>	<b>12,276</b>	<b>7,700</b>
<b>Council areas</b>												
Aberdeen City	12,961	5,643	2,745	4573	12,110	7,350	2427	2,333	851	-1,707	318	2,240
Aberdeenshire	9,745	6,036	2,422	1287	7,929	5,114	1,741	1,074	1,816	922	681	213
Angus	4,274	2,963	874	437	3,750	2,583	697	470	524	380	177	-33
Argyll & Bute	4,100	2,187	1,546	367	4,161	2,391	1,105	665	-61	-204	441	-298
Clackmannanshire	2,114	1,511	433	170	1,742	1,203	335	204	372	308	98	-34
Dumfries & Galloway	4,900	1,790	2,666	444	4,287	1,736	1,734	817	613	54	932	-373
Dundee City	7,091	3,784	1,556	1,751	6,801	4,183	1,482	1,136	290	-399	74	615
East Ayrshire	3,797	2,718	903	176	3,385	2,340	654	391	412	378	249	-215
East Dunbartonshire	3,428	2,857	463	108	3,541	2,932	425	184	-113	-75	38	-76
East Lothian	4,775	3,254	1,053	468	3,274	2,267	634	373	1,501	987	419	95
East Renfrewshire	3,298	2,855	333	110	3,371	2,685	458	228	-73	170	-125	-118
Edinburgh, City of	28,383	10,817	9,136	8430	25,874	12,719	7776	5,379	2,509	-1,902	1,360	3,051
Eilean Siar	1,022	616	340	66	1,026	696	212	118	-4	-80	128	-52
Falkirk	4,287	2,990	833	464	3,767	2,571	700	496	520	419	133	-32
Fife	12,030	6,396	3,763	1871	10,774	5,663	3181	1,930	1,256	733	582	-59
Glasgow City <sup>4</sup>	30,045	14,599	6,928	8518	28,234	16,778	6049	5,407	1,811	-2,179	879	3,111
Highland	9,557	4,531	3,706	1320	7,634	4,100	2,228	1,306	1,923	431	1,478	14
Inverclyde	1,685	1,071	451	163	1,863	1,256	381	226	-178	-185	70	-63
Midlothian	3,008	2,328	510	170	2,565	2,009	359	197	443	319	151	-27
Moray	3,603	1,637	1,540	426	3,253	1,695	1,023	535	350	-58	517	-109
North Ayrshire	4,218	2,894	1,095	229	3,937	2,781	710	446	281	113	385	-217
North Lanarkshire	7,817	5,506	1,411	900	7,613	5,322	1,166	1,125	204	184	245	-225
Orkney Islands	744	368	335	41	664	419	157	88	80	-51	178	-47
Perth & Kinross	7,515	3,879	1,647	1,989	5,553	3,382	1,109	1,062	1,962	497	538	927
Renfrewshire	4,956	3,507	880	569	4,815	3,392	760	663	141	115	120	-94
Scottish Borders	5,227	2,496	2,151	580	4,125	2,135	1,308	682	1,102	361	843	-102
Shetland Islands	742	330	332	80	752	433	206	113	-10	-103	126	-33
South Ayrshire	3,839	2,508	1,047	284	3,604	2,279	767	558	235	229	280	-274
South Lanarkshire	8,668	6,460	1,604	604	8,237	5,844	1,368	1,025	431	616	236	-421
Stirling	4,910	2,899	1,223	788	4,802	3,219	897	686	108	-320	326	102
West Dunbartonshire	2,461	1,896	441	124	2,613	2,016	385	212	-152	-120	56	-88
West Lothian	6,163	3,872	1,298	993	5,331	3,705	955	671	832	167	343	322
<b>NHS Board areas</b>												
Ayrshire & Arran	9,075	5,341	3,045	689	8,147	4,621	2,131	1,395	928	720	914	-706
Borders	5,227	2,496	2,151	580	4,125	2,135	1,308	682	1,102	361	843	-102
Dumfries & Galloway	4,900	1,790	2,666	444	4,287	1,736	1,734	817	613	54	932	-373
Fife	12,030	6,396	3,763	1871	10,774	5,663	3,181	1,930	1,256	733	582	-59
Forth Valley	9,701	5,788	2,491	1422	8,714	5,391	1,934	1,389	987	397	557	33
Grampian	19,314	6,321	6,707	6286	16,297	7,164	5,191	3,942	3,017	-843	1,516	2,344
Greater Glasgow & Clyde <sup>4</sup>	34,273	14,833	9,751	9689	32,690	16,927	8,703	7,060	1,583	-2,094	1,048	2,629
Highland	13,319	6,380	5,252	1687	11,457	6,153	3,333	1,971	1,862	227	1,919	-284
Lanarkshire	12,304	8,130	2,766	1408	11,747	7,446	2,291	2,010	557	684	475	-602
Lothian	33,772	11,719	11,992	10061	28,548	12,204	9,724	6,620	5,224	-485	2,268	3,441
Orkney	744	368	335	41	664	419	157	88	80	-51	178	-47
Shetland	742	330	332	80	752	433	206	113	-10	-103	126	-33
Tayside	15,168	6,918	4,074	4176	12,387	6,438	3,284	2,665	2,781	480	790	1,511
Western Isles	1,022	616	340	66	1,026	696	212	118	-4	-80	128	-52

<sup>1</sup> The number of moves between Scotland and the rest of the UK shown here differ from those quoted elsewhere.

This is because movements to/from the armed forces are included in these figures but are excluded from the others.

<sup>2</sup> The total in- and out-migration figures for Scotland equal the sum of migration from / to the rest of the UK and overseas. However, they do not equal the sum of moves for individual Council or NHS Board areas. Migration for individual Council and NHS Board areas includes people moving within Scotland. Since such moves do not involve anyone leaving or entering Scotland, they are not counted in the Scotland totals.

<sup>3</sup> Figures in this column have not been rounded and so may differ slightly from those in table 4.

<sup>4</sup> Includes asylum seekers

**Table 6 Components of population change by administrative area: 2001-2008**

	Estimated population 30 June 2001	Births	Deaths	Natural change	Estimated <sup>1</sup> net civilian migration	Other <sup>2</sup> changes	Estimated population 30 June 2008	Population change	
								Number	%
<b>SCOTLAND</b>	<b>5,064,200</b>	<b>381,793</b>	<b>395,950</b>	<b>-14,157</b>	<b>118,365</b>	<b>92</b>	<b>5,168,500</b>	<b>104,300</b>	<b>2.1</b>
<b>Council areas</b>									
Aberdeen City	211,910	15,160	15,081	79	-1,556	-33	210,400	-1,510	-0.7
Aberdeenshire	226,940	17,308	15,003	2,305	12,467	-252	241,460	14,520	6.4
Angus	108,370	7,686	9,143	-1,457	3,811	-414	110,310	1,940	1.8
Argyll & Bute	91,300	5,380	7,921	-2,541	2,351	-610	90,500	-800	-0.9
Clackmannanshire	48,070	3,751	3,552	199	1,960	251	50,480	2,410	5.0
Dumfries & Galloway	147,780	9,838	12,918	-3,080	3,882	-2	148,580	800	0.5
Dundee City	145,460	10,959	12,246	-1,287	-1,703	0	142,470	-2,990	-2.1
East Ayrshire	120,310	8,789	9,996	-1,207	726	91	119,920	-390	-0.3
East Dunbartonshire	108,250	6,494	6,884	-390	-2,946	-194	104,720	-3,530	-3.3
East Lothian	90,180	7,137	7,173	-36	5,956	0	96,100	5,920	6.6
East Renfrewshire	89,410	6,290	6,028	262	-452	0	89,220	-190	-0.2
Edinburgh, City of	449,020	33,325	31,018	2,307	19,814	509	471,650	22,630	5.0
Eilean Siar	26,450	1,714	2,644	-930	680	0	26,200	-250	-0.9
Falkirk	145,270	11,957	11,373	584	5,698	18	151,570	6,300	4.3
Fife	349,770	26,803	26,968	-165	11,915	370	361,890	12,120	3.5
Glasgow City	578,710	47,188	50,881	-3,693	9,109	114	584,240	5,530	1.0
Highland	208,920	15,238	16,495	-1,257	11,780	-43	219,400	10,480	5.0
Inverclyde	84,150	5,954	7,426	-1,472	-1,907	9	80,780	-3,370	-4.0
Midlothian	80,950	6,184	5,811	373	-1,123	360	80,560	-390	-0.5
Moray	87,000	6,236	6,626	-390	1,480	-320	87,770	770	0.9
North Ayrshire	135,820	10,021	11,334	-1,313	1,413	0	135,920	100	0.1
North Lanarkshire	321,180	27,273	24,293	2,980	1,207	153	325,520	4,340	1.4
Orkney Islands	19,220	1,289	1,544	-255	925	0	19,890	670	3.5
Perth & Kinross	134,950	9,235	11,190	-1,955	11,050	135	144,180	9,230	6.8
Renfrewshire	172,850	12,983	14,005	-1,022	-2,028	0	169,800	-3,050	-1.8
Scottish Borders	106,950	7,580	9,295	-1,715	7,195	0	112,430	5,480	5.1
Shetland Islands	21,960	1,683	1,443	240	-188	-32	21,980	20	0.1
South Ayrshire	112,160	7,066	9,953	-2,887	2,497	-100	111,670	-490	-0.4
South Lanarkshire	302,340	23,228	23,483	-255	8,005	0	310,090	7,750	2.6
Stirling	86,200	6,132	6,166	-34	2,102	82	88,350	2,150	2.5
West Dunbartonshire	93,320	7,123	7,982	-859	-1,521	0	90,940	-2,380	-2.6
West Lothian	159,030	14,789	10,075	4,714	5,766	0	169,510	10,480	6.6
<b>NHS Board areas</b>									
Ayrshire & Arran	368,290	25,876	31,283	-5,407	4,636	-9	367,510	-780	-0.2
Borders	106,950	7,577	9,293	-1,716	7,196	0	112,430	5,480	5.1
Dumfries & Galloway	147,780	9,838	12,918	-3,080	3,882	-2	148,580	800	0.5
Fife	349,690	26,803	26,968	-165	11,920	370	361,815	12,125	3.5
Forth Valley	279,240	21,835	21,139	696	9,760	351	290,047	10,807	3.9
Grampian	525,850	38,704	36,710	1,994	12,391	-605	539,630	13,780	2.6
Greater Glasgow & Clyde	1,197,570	92,163	98,974	-6,811	3,987	-71	1,194,675	-2,895	-0.2
Highland	300,220	20,618	24,416	-3,798	14,131	-653	309,900	9,680	3.2
Lanarkshire	553,230	44,400	42,021	2,379	5,412	153	561,174	7,944	1.4
Lothian	779,000	61,424	54,081	7,343	30,515	869	817,727	38,727	5.0
Orkney	19,220	1,289	1,544	-255	925	0	19,890	670	3.5
Shetland	21,960	1,683	1,443	240	-188	-32	21,980	20	0.1
Tayside	388,750	27,869	32,516	-4,647	13,118	-279	396,942	8,192	2.1
Western Isles	26,450	1,714	2,644	-930	680	0	26,200	-250	-0.9

<sup>1</sup> Includes movements to/from armed forces.

<sup>2</sup> Includes changes in the number of armed forces stationed in Scotland.

**Table 7 Components of population change by administrative area: 1998-2008**

	Estimated population 30 June 1998	Births	Deaths	Natural change	Estimated <sup>1</sup> net civilian migration and other changes	Estimated population 30 June 2008	Population change	
							Number	%
<b>SCOTLAND</b>	<b>5,077,070</b>	<b>545,186</b>	<b>572,645</b>	<b>-27,459</b>	<b>118,889</b>	<b>5,168,500</b>	<b>91,430</b>	<b>1.8</b>
<b>Council areas</b>								
Aberdeen City	215,650	21,834	21,859	-25	-5,225	210,400	-5,250	-2.4
Aberdeenshire	226,220	24,594	21,246	3,348	11,892	241,460	15,240	6.7
Angus	109,790	10,957	13,273	-2,316	2,836	110,310	520	0.5
Argyll & Bute	91,670	7,824	11,472	-3,648	2,478	90,500	-1,170	-1.3
Clackmannanshire	48,410	5,315	5,100	215	1,855	50,480	2,070	4.3
Dumfries & Galloway	148,740	13,933	18,332	-4,399	4,239	148,580	-160	-0.1
Dundee City	149,680	15,458	17,889	-2,431	-4,779	142,470	-7,210	-4.8
East Ayrshire	121,000	12,569	14,512	-1,943	863	119,920	-1,080	-0.9
East Dunbartonshire	109,040	9,580	9,874	-294	-4,026	104,720	-4,320	-4.0
East Lothian	88,360	10,093	10,292	-199	7,939	96,100	7,740	8.8
East Renfrewshire	88,310	9,157	8,558	599	311	89,220	910	1.0
Edinburgh, City of	446,240	47,385	45,722	1,663	23,747	471,650	25,410	5.7
Eilean Siar	27,540	2,465	3,790	-1,325	-15	26,200	-1,340	-4.9
Falkirk	143,880	16,668	16,271	397	7,293	151,570	7,690	5.3
Fife	346,540	37,765	38,851	-1,086	16,436	361,890	15,350	4.4
Glasgow City	587,050	67,498	75,265	-7,767	4,957	584,240	-2,810	-0.5
Highland	208,850	21,935	23,774	-1,839	12,389	219,400	10,550	5.1
Inverclyde	85,840	8,687	10,863	-2,176	-2,884	80,780	-5,060	-5.9
Midlothian	80,120	9,040	8,352	688	-248	80,560	440	0.5
Moray	86,800	9,083	9,467	-384	1,354	87,770	970	1.1
North Ayrshire	137,470	14,360	16,323	-1,963	413	135,920	-1,550	-1.1
North Lanarkshire	322,180	38,831	34,846	3,985	-645	325,520	3,340	1.0
Orkney Islands	19,590	1,807	2,180	-373	673	19,890	300	1.5
Perth & Kinross	134,580	13,284	15,981	-2,697	12,297	144,180	9,600	7.1
Renfrewshire	175,320	18,854	20,256	-1,402	-4,118	169,800	-5,520	-3.1
Scottish Borders	106,040	10,743	13,213	-2,470	8,860	112,430	6,390	6.0
Shetland Islands	22,700	2,448	2,046	402	-1,122	21,980	-720	-3.2
South Ayrshire	113,320	10,255	14,360	-4,105	2,455	111,670	-1,650	-1.5
South Lanarkshire	303,330	33,064	33,675	-611	7,371	310,090	6,760	2.2
Stirling	84,680	8,797	8,964	-167	3,837	88,350	3,670	4.3
West Dunbartonshire	94,930	10,229	11,521	-1,292	-2,698	90,940	-3,990	-4.2
West Lothian	153,200	20,674	14,518	6,156	10,154	169,510	16,310	10.6
<b>NHS Board areas</b>								
Ayrshire & Arran	371,790	37,184	45,195	-8,011	3,731	367,510	-4,280	-1.2
Borders	106,040	10,740	13,211	-2,471	8,861	112,430	6,390	6.0
Dumfries & Galloway	148,740	13,933	18,332	-4,399	4,239	148,580	-160	-0.1
Fife	346,540	37,765	38,851	-1,086	16,361	361,815	15,275	4.4
Forth Valley	276,970	30,775	30,383	392	12,685	290,047	13,077	4.7
Grampian	528,670	55,511	52,572	2,939	8,021	539,630	10,960	2.1
Greater Glasgow & Clyde	1,210,820	132,475	144,777	-12,302	-3,843	1,194,675	-16,145	-1.3
Highland	300,520	29,759	35,246	-5,487	14,867	309,900	9,380	3.1
Lanarkshire	555,180	63,455	60,094	3,361	2,633	561,174	5,994	1.1
Lothian	767,920	87,181	78,888	8,293	41,514	817,727	49,807	6.5
Orkney	19,590	1,807	2,180	-373	673	19,890	300	1.5
Shetland	22,700	2,448	2,046	402	-1,122	21,980	-720	-3.2
Tayside	394,050	39,688	47,080	-7,392	10,284	396,942	2,892	0.7
Western Isles	27,540	2,465	3,790	-1,325	-15	26,200	-1,340	-4.9

<sup>1</sup> Includes movements to/from armed forces and changes in the number of armed forces stationed in Scotland.

**Table 8 Age and sex structure of administrative areas: 30 June 2008**

	Males				Females				Sex Ratio <sup>3</sup>
	Average Age <sup>1</sup>	% under 16	% working age	% pension - able age <sup>2</sup>	Average Age <sup>1</sup>	% under 16	% working age	% pension - able age <sup>2</sup>	
<b>SCOTLAND</b>	<b>39</b>	<b>19</b>	<b>67</b>	<b>14</b>	<b>41</b>	<b>17</b>	<b>59</b>	<b>25</b>	<b>0.94</b>
<b>Council areas</b>									
Aberdeen City	38	16	71	13	40	15	62	23	0.98
Aberdeenshire	39	20	66	14	41	18	58	24	0.99
Angus	41	19	64	18	43	17	54	29	0.94
Argyll & Bute	42	17	65	18	45	16	53	31	0.99
Clackmannanshire	38	20	67	14	41	18	58	24	0.96
Dumfries & Galloway	42	18	63	20	45	16	53	31	0.94
Dundee City	39	18	66	16	41	15	59	25	0.90
East Ayrshire	39	19	66	15	42	17	58	25	0.94
East Dunbartonshire	40	20	64	16	43	17	56	27	0.93
East Lothian	39	21	64	16	42	18	56	26	0.92
East Renfrewshire	39	22	64	15	42	19	55	26	0.92
Edinburgh, City of	37	16	72	12	40	14	65	22	0.94
Eilean Siar	42	18	64	18	45	17	52	31	0.97
Falkirk	38	20	66	14	41	18	59	24	0.94
Fife	39	19	66	15	42	17	57	26	0.93
Glasgow City	36	17	71	11	39	16	63	21	0.93
Highland	40	19	65	16	43	17	56	27	0.96
Inverclyde	39	19	66	15	42	16	57	26	0.91
Midlothian	39	20	65	15	41	18	58	24	0.91
Moray	40	18	66	16	43	17	55	28	1.02
North Ayrshire	39	20	64	16	42	17	56	27	0.90
North Lanarkshire	37	21	66	13	40	18	59	22	0.93
Orkney Islands	41	18	65	17	43	17	55	28	0.97
Perth & Kinross	41	18	65	17	43	17	55	28	0.95
Renfrewshire	39	19	66	14	41	17	59	24	0.92
Scottish Borders	41	19	63	18	43	17	54	28	0.94
Shetland Islands	39	20	66	15	41	19	56	24	1.02
South Ayrshire	41	18	64	18	44	16	54	30	0.92
South Lanarkshire	39	19	66	14	41	17	58	24	0.92
Stirling	39	20	65	15	41	17	58	25	0.91
West Dunbartonshire	38	19	67	13	41	17	59	24	0.90
West Lothian	37	21	67	12	39	20	60	20	0.94
<b>NHS Board areas</b>									
Ayrshire & Arran	40	19	65	16	43	17	56	27	0.92
Borders	41	19	63	18	43	17	54	28	0.94
Dumfries & Galloway	42	18	63	20	45	16	53	31	0.94
Fife	39	19	66	15	42	17	57	26	0.93
Forth Valley	38	20	66	14	41	18	58	24	0.93
Grampian	39	18	68	14	41	17	59	24	0.99
Greater Glasgow & Clyde	37	19	68	13	41	16	60	23	0.92
Highland	41	18	65	17	44	17	55	28	0.97
Lanarkshire	38	20	66	14	41	18	59	23	0.93
Lothian	38	18	69	13	40	16	62	22	0.93
Orkney	41	18	65	17	43	17	55	28	0.97
Shetland	39	20	66	15	41	19	56	24	1.02
Tayside	40	18	65	17	43	16	56	27	0.93
Western Isles	42	18	64	18	45	17	52	31	0.97

<sup>1</sup> The average is the arithmetic mean age of a population count for a particular area.

<sup>2</sup> Pensionable age is 65 for men and 60 for women.

<sup>3</sup> The sex ratio is the male population divided by the female population.

**Table 9 Rest of UK/Overseas moves by age group: 2007-2008**

Movements between Scotland and the rest of the UK <sup>1</sup>																				
	0-15		16-24		25-34		35-44		45-54		55-64		65-74		75-84		85+		All ages	
	N	%	N	%	N	%	N	%	N	%	N	%	N	%	N	%	N	%	N	%
IN	8,110	15	12,203	23	13,092	25	8,429	16	5,049	9	3,640	7	1,563	3	800	2	441	1	53,327	100
OUT	6,089	15	9,807	23	12,274	29	6,153	15	3,330	8	2,210	5	1,082	3	550	1	323	1	41,818	100
NET	2,021		2,396		818		2,276		1,719		1,430		481		250		118		11,509	
Movements between Scotland and Overseas (including asylum seekers) <sup>2</sup>																				
	0-15		16-24		25-34		35-44		45-54		55-64		65-74		75-84		85+		All ages	
	N	%	N	%	N	%	N	%	N	%	N	%	N	%	N	%	N	%	N	%
IN	5,564	14	12,534	33	13,356	35	3,901	10	1,826	5	794	2	342	1	141	0	42	0	38,500	100
OUT	4,426	14	7,198	23	9,209	30	4,579	15	2,419	8	1,571	5	772	3	401	1	225	1	30,800	100
NET	1,138		5,336		4,147		-678		-593		-777		-430		-260		-183		7,700	
Total net migration (including asylum seekers and rounding) <sup>3</sup>																				
	0-15		16-24		25-34		35-44		45-54		55-64		65-74		75-84		85+		All ages	
	N		N		N		N		N		N		N		N		N		N	
NET	3,332		7,507		5,283		1,944		1,215		681		58		-9		-58		19,953	

1. National Health Service Central Register (NHSCR) patient movements mid-2007 to mid-2008.

2. Totals are based primarily on International Passenger Survey (IPS) data. However, the sample size in Scotland is too small to give an age breakdown so an age distribution is assumed using NHSCR data.

3. Note that the movements between Scotland and the rest of the UK and overseas will not sum to the total net migration as they exclude movements to and from the armed forces and rounding adjustments.

**Table 10 Land area and population density, by administrative area: 30 June 2008**

	Estimated population 30 June 2008	Area <sup>1</sup> (sq km)	Persons <sup>2</sup> per sq km
<b>SCOTLAND</b>	<b>5,168,500</b>	<b>77,925</b>	<b>66</b>
<b>Council areas</b>			
Aberdeen City	210,400	186	1,133
Aberdeenshire	241,460	6,313	38
Angus	110,310	2,182	51
Argyll & Bute	90,500	6,909	13
Clackmannanshire	50,480	159	318
Dumfries & Galloway	148,580	6,426	23
Dundee City	142,470	60	2,381
East Ayrshire	119,920	1,262	95
East Dunbartonshire	104,720	175	600
East Lothian	96,100	679	141
East Renfrewshire	89,220	174	513
Edinburgh, City of	471,650	264	1,788
Eilean Siar	26,200	3,071	9
Falkirk	151,570	297	510
Fife	361,890	1,325	273
Glasgow City	584,240	175	3,329
Highland	219,400	25,659	9
Inverclyde	80,780	160	503
Midlothian	80,560	354	228
Moray	87,770	2,238	39
North Ayrshire	135,920	885	154
North Lanarkshire	325,520	470	693
Orkney Islands	19,890	990	20
Perth & Kinross	144,180	5,286	27
Renfrewshire	169,800	261	650
Scottish Borders	112,430	4,732	24
Shetland Islands	21,980	1,466	15
South Ayrshire	111,670	1,222	91
South Lanarkshire	310,090	1,772	175
Stirling	88,350	2,187	40
West Dunbartonshire	90,940	159	572
West Lothian	169,510	427	397
<b>NHS Board areas</b>			
Ayrshire & Arran	367,510	3,377	109
Borders	112,430	4,732	24
Dumfries & Galloway	148,580	6,426	23
Fife	361,815	1,325	273
Forth Valley	290,047	2,633	110
Grampian	539,630	8,736	62
Greater Glasgow & Clyde	1,194,675	1,151	1,038
Highland	309,900	32,568	10
Lanarkshire	561,174	2,181	257
Lothian	817,727	1,760	465
Orkney	19,890	990	20
Shetland	21,980	1,466	15
Tayside	396,942	7,508	53
Western Isles	26,200	3,071	9

<sup>1</sup> See note on page 36. Figures may not add exactly because of rounding.

<sup>2</sup> Persons per sq km has been calculated using actual, not rounded areas.

## 6. Notes and Definitions

### Population Covered

The estimated population of an area includes all those usually resident there, whatever their nationality. Students are treated as being resident at their term-time address. Members of UK and non-UK armed forces stationed in Scotland are included; UK forces stationed outside Scotland are excluded. Short-term international migrants are excluded.

### Age

Population figures relate to 30 June of the year shown and ages relate to age last birthday.

### Presentation of Results

Although the populations are tabulated in units, this does not imply accuracy to that level. The data are presented in units for the convenience of users wishing to compile non-standard aggregations without encountering rounding problems.

### Administrative Areas

The composition of the NHS Board areas in terms of Council areas is summarised in the table below. From 1 April 2006 responsibility for NHS Argyll & Clyde was split between NHS Greater Glasgow (now known as Greater Glasgow and Clyde) and NHS Highland. The tables presented in this report present information for the new NHS Board areas.

#### Composition of NHS Board areas

<b>NHS Board area</b>	<b>Council area</b>
<b>Ayrshire &amp; Arran</b>	East Ayrshire, North Ayrshire, South Ayrshire
<b>Borders</b>	Scottish Borders
<b>Dumfries &amp; Galloway</b>	Dumfries & Galloway
<b>Fife</b>	Fife
<b>Forth Valley</b>	Clackmannanshire, Falkirk (part), Stirling (part), Perth & Kinross (part)
<b>Grampian</b>	Aberdeen City, Aberdeenshire, Moray
<b>Greater Glasgow &amp; Clyde</b> <sup>1</sup>	East Dunbartonshire, East Renfrewshire, Glasgow City, Inverclyde, North Lanarkshire (part), Renfrewshire, South Lanarkshire (part), Stirling (part), West Dunbartonshire
<b>Highland</b> <sup>1</sup>	Highland, Argyll & Bute
<b>Lanarkshire</b>	North Lanarkshire (part), South Lanarkshire (part), West Lothian (part), Falkirk (part)
<b>Lothian</b>	East Lothian, City of Edinburgh, Midlothian, West Lothian (part), Falkirk (part)
<b>Orkney</b>	Orkney Islands
<b>Shetland</b>	Shetland Islands
<b>Tayside</b>	Angus, Dundee City, Perth & Kinross (part)
<b>Western Isles</b>	Eilean Siar

<sup>1</sup> New NHS Board areas including parts of former Argyll & Clyde.

Note: In practice there are some other very small "slivers" where NHS Board and Council area boundaries cross.

## **Land Area**

The land areas used to calculate the population density information presented in Table 9 were derived from digital boundaries used for the 2001 Census.

## **Sources of migration data**

Migration is the most difficult component of population change to estimate, as there is no comprehensive system which registers migration in the UK – either moves to or from the rest of the world, or moves within the UK. Estimates of migration have therefore to be based on survey data and the best proxy data that exist.

Migration estimates are derived from three key sources of data. The National Health Service Central Register (NHSCR) is used to calculate moves between NHS Board areas within the UK, with migration at Council area and below estimated using anonymised data from the Community Health Index (CHI). The International Passenger Survey (IPS) provides information on moves into and out of Scotland with an origin or destination of outside the UK. In addition to IPS data, additional information is used for migrants to and from the Republic of Ireland and asylum seekers. These three main sources are described in more detail below.

## **Internal migration**

The NHSCR system records the movements of patients between NHS health board areas in the UK. Each time a patient transfers to a new NHS doctor in a different health board area, the NHSCR is notified and then the patient is considered to have made a migrant move. Counts of these re-registrations are used as a proxy indicator for moves within the UK.

The CHI holds records of people registered with an NHS doctor in Scotland. Unlike the NHSCR, the records provided to the General Register Office for Scotland (GROS) contain the postcode of the patient's address, which enables migration to be estimated for councils, and for smaller areas. The approach used for estimating council-level migration involves matching CHI patient records extracted from a database which reflects the 'live' CHI system on two occasions one year apart.

Currently, GROS migration data derived from the NHSCR is considered to be the most reliable data available at health board level, so estimates from the CHI are controlled to ensure that they are consistent with the NHSCR data for moves across a health board boundary by origin, destination, age and sex.

## **International migration**

An international migrant is defined by the United Nations (UN) as someone who changes country of residence for 12 months or more. There is no single, all-inclusive system in place to measure all movements of population into and out of the UK. Therefore, it is necessary to use a combination of data from different sources that have different characteristics and attributes in order to produce estimates of international migration. While offering the best data currently available, none of the data sources used is specifically designed to capture information solely on international migration.

Three sources of data are used to compile the National Statistics estimates of international migration into Scotland:

- The International Passenger Survey (IPS) is a continuous sample survey conducted by the Office for National Statistics at the principal air, sea and Channel Tunnel routes between the United Kingdom and countries outside the British Isles. It is the prime source of migration data to and from the UK, providing estimates of both inflows and outflows, but does not cover all migration types
- Home Office, which provides data on asylum seekers and their dependants
- Irish Central Statistics Office, which provides estimates of migration of all citizenships between the UK and the Irish Republic

Given that the IPS collects information on intentions which may or may not be realised, an adjustment is made to the IPS data for visitor and migrant switchers (people who change their intentions and their migratory status). The Total International Migration (TIM) estimate is derived by combining these components.

The IPS provides an estimate of international migrants into the United Kingdom. The allocation of these migrants to Scotland is based on the Labour Force Survey. This provides more reliable data on the geographical distribution of immigrants than the destination provided in the IPS as it is based on where migrants actually live rather than on their initial intentions. The outflow of international migrants from Scotland is based directly on the IPS data. More information on the TIM method can be found in the Office for National Statistics (ONS) publication Total International Migration 2007 which is available through the following link:

<http://www.statistics.gov.uk/cci/nugget.asp?id=260>

This is the second year in which the TIM estimate for Scotland has been used for the mid-year estimates for Scotland. Previously, GROS used a similar method based on the IPS, but this did not use the Labour Force Survey distribution or include estimates of migrant switchers. It did however use an adjustment for unmeasured migration. The results of the 2001 Census indicated that the previously published 2000 mid-year estimates had been overestimated as a result of cumulative errors in estimating migration. To ensure that migration estimates did not continue to be overestimated, an unmeasured migration adjustment was included. The TIM methodology does not include this adjustment. Rather the assumption is that, since the census and estimates are calculated using different methodologies, differences inevitably arise. An evaluation of the impact of changing method has been carried out. The conclusion was that the GROS method estimated a net migration gain around 9,700 higher than the TIM method between the census and the 2006 estimates. There are currently no plans to revise the previous mid-year estimates.

### **Distribution of International Migrants to Scotland**

International migration flows to NHS Boards were allocated by using overseas inflows recorded on the NHSCR. However, NHSCR records hold limited data on international outflows from NHS Boards to overseas, as patients rarely de-register with their doctor when moving overseas. As a result international outflows were allocated using averaged proportions based on international inflows, outflows to the rest of the UK and the population size of each Health Board.

Age and sex distributions of international in-migrants are obtained directly from the NHSCR. The age/sex distribution of moves for international out-migrants was based on the distribution of migrants to the rest of the UK, as recorded by the NHSCR.

Distribution of migrants to Council areas is based on the Community Health Index (CHI) records, controlled to the NHSCR geographic & age / sex distributions. International in-migrants were allocated using records appearing on the CHI extract where the patient had arrived from overseas. Like the NHSCR, the CHI extract holds limited data on people leaving Scotland for overseas and so international out-migrants were allocated using a combination of in-migrants to Scotland from overseas and migrants leaving Scotland for the rest of the UK.

Work to improve the method used to allocate international out-migrants to NHS Board and Council areas is continuing and further improvements will be considered for future publications.

### **Additional Migration Data**

The GROS website now includes a migration section which provides additional tables showing migration estimates associated with mid-year population estimates. This can be accessed through the following link:

<http://www.gro-scotland.gov.uk/statistics/migration/index.html>

### **Research into improving Migration and Population Statistics**

It is increasingly important to have high quality statistics on migration and the population, for policy development and for planning and providing public services. Achieving this aim is challenging in the context of increasingly complex lifestyles and changes in migration to and from the UK over the last decade.

It was in this context that the National Statistician set up the Inter-Departmental Task Force on Migration Statistics to make recommendations on timely improvements that could be made to estimates of migration and migrant populations in the United Kingdom, both nationally and at a local level. The report of the Inter-Departmental Task Force on Migration Statistics was published on 15 December 2006 by the ONS. The GROS represented the devolved administrations on this task force, and is working with the ONS on the implementation of the recommendations through the Improvements to Migration and Population Statistics (IMPS) cross-government programme.

The IMPS workplan involves:

- Improving the data available on numbers entering and leaving the United Kingdom;
- Making effective use of new and existing administrative and survey data sources;
- Improving local population estimates and projections used in allocating resources and developing services;
- Improving the public reporting of population and migration statistics;
- Establishing a wider range of timely indicators and analysis to inform the evidence base on migration and its impacts on policy and public services.

The GROS is involved in a number of workstreams within this programme with the aim of incorporating the research into their outputs. More details can be found on the GROS website

<http://www.gro-scotland.gov.uk/statistics/migration/migration-statistics-improvements.html>

More detail on the IMPS programme is available from the following link on the ONS website

<http://www.statistics.gov.uk/about/data/methodology/specific/population/future/imps/updates/default.asp>

## 7. Notes on Statistical Publications

**ENQUIRIES ABOUT THIS PUBLICATION** Enquiries should be addressed to: Statistics Customer Services, General Register Office for Scotland, Ladywell House, Edinburgh, EH12 7TF  
Telephone: (0131) 314 4299, Fax: (0131) 314 4696, E-mail: [customer@gro-scotland.gsi.gov.uk](mailto:customer@gro-scotland.gsi.gov.uk).

**NATIONAL STATISTICS** This is a National Statistics publication. It has been produced to high professional standards set out in the National Statistics Code of Practice and Release Practice Protocol ([www.statistics.gov.uk/about\\_ns/cop/default.asp](http://www.statistics.gov.uk/about_ns/cop/default.asp)). These statistics undergo regular quality assurance reviews to ensure that they meet customer needs. They are produced free from any political interference.

**THE GENERAL REGISTER OFFICE FOR SCOTLAND (GROS)** GROS is the devolved Government department in Scotland responsible for the registration of births, marriages, civil partnerships, deaths, divorces and adoptions in Scotland. We are responsible for the Census of Population in Scotland which we use, with other sources of information, to produce population and household statistics. We make available important information for family history. Our website is [www.gro-scotland.gov.uk/](http://www.gro-scotland.gov.uk/).

**OTHER GROS STATISTICS** Further detailed statistics produced by GROS are available from the statistics pages of the GROS website ([www.gro-scotland.gov.uk/statistics/index.html](http://www.gro-scotland.gov.uk/statistics/index.html)). Statistics from the 2001 Census are on the Scotland's Census Results On-Line website ([www.scrol.gov.uk](http://www.scrol.gov.uk)) and on the Census section of the main website ([www.gro-scotland.gov.uk/census/index.html](http://www.gro-scotland.gov.uk/census/index.html)).

Information about future publications is provided on the GROS website ([www.gro-scotland.gov.uk/futurepb.html](http://www.gro-scotland.gov.uk/futurepb.html)). If you would like to receive notification of forthcoming statistical publications, you can register your interest on The Scottish Government's ScotStat web site at [www.scotland.gov.uk/Topics/Statistics/scotstat/Intro](http://www.scotland.gov.uk/Topics/Statistics/scotstat/Intro).

**COMPLAINTS AND SUGGESTIONS** If you are not satisfied with our service, please write to Kirsty MacLachlan, Head of Demography Division, Room 1/2/7, Ladywell House, Ladywell Road, Edinburgh, EH12 7TF, Telephone: (0131) 314 4242, E-mail: [kirsty.maclachlan@gro-scotland.gsi.gov.uk](mailto:kirsty.maclachlan@gro-scotland.gsi.gov.uk).

We also welcome any comments or suggestions that would help us to improve our standards of service.

### RELATED ORGANISATIONS

ORGANISATION	CONTACT
THE SCOTTISH GOVERNMENT (SG): The SG is responsible for a wide range of devolved functions. The aim of the statistical service in the SG is to provide relevant and reliable statistical information, analysis and advice that meets the needs of government, business and the people of Scotland	Office of the Chief Statistician, The Scottish Government, 3 <sup>rd</sup> Floor West Rear, St Andrews House, Edinburgh, EH1 3DG Telephone: (0131) 244 0442 Fax: (0131) 244 0335 E-mail: <a href="mailto:statistics.enquiries@scotland.gsi.gov.uk">statistics.enquiries@scotland.gsi.gov.uk</a> Website: <a href="http://www.scotland.gov.uk/Topics/Statistics">www.scotland.gov.uk/Topics/Statistics</a>
The OFFICE FOR NATIONAL STATISTICS (ONS) is responsible for producing a wide range of economic and social statistics. It also, for England and Wales, registers life events and holds the Census of Population.	Customer Contact Centre, Room 1.015, Office for National Statistics, Cardiff Road, Newport, NP10 8XG Telephone: 0845 601 3034 Minicom: 01633 812399 Fax: 01633 652747 E-mail: <a href="mailto:info@statistics.gsi.gov.uk">info@statistics.gsi.gov.uk</a> Website: <a href="http://www.statistics.gov.uk">www.statistics.gov.uk</a>
The NORTHERN IRELAND STATISTICS AND RESEARCH AGENCY (NISRA) is Northern Ireland's official statistics organisation. The Agency also has responsibility, in Northern Ireland, for the registration of births, marriages, adoptions and deaths and the Census of Population.	Northern Ireland Statistics and Research Agency, McAuley House, 2-14 Castle Street, Belfast, BT1 1SA Telephone 028 9034 8100 Fax 028 9034 8106 Website: <a href="http://www.nisra.gov.uk">www.nisra.gov.uk</a>

© Crown Copyright. Brief extracts from the Crown Copyright material in General Register Office for Scotland publications may be reproduced provided the source is fully acknowledged.