



General Register Office
for
SCOTLAND
information about Scotland's people

Mid-2007 Population Estimates Scotland
Population estimates by sex, age and administrative
area

Published on 24 July 2008

A National Statistics publication for Scotland

National Statistics are produced to high professional standards set out in the National Statistics Code of Practice. They undergo regular quality assurance reviews to ensure that they meet customer needs. They are produced free from any political interference.



Contents

Main Points	1
1. Background	2
2. The Population of Scotland.....	2
3. The Age and Sex Structure of the Population.....	4
4. Results for Administrative Areas.....	6
4.1 Population Change 2006-2007	6
4.2 Components of migration 2006-2007	6
4.3 Population Change 1997-2007	8
4.4 Sex and Age Structure of Administrative Areas in Scotland.....	12
5. Population Density.....	14
6. Notes and Definitions.....	35
7. Notes on Statistical Publications.....	40

List of Tables

Table 1 Estimated population by age and sex, Scotland: 30 June 2007.....	15
Table 2 Estimated population by sex, single year of age and administrative area: 30 June 2007.....	16
Table 3 Estimated population by sex, five year age group and administrative area: 30 June 2007	25
Table 4 Components of population change by administrative area: 2006-2007	28
Table 5 Components of migration by administrative area: 2006-2007.....	29
Table 6 Components of population change by administrative area: 2001-2007	29
Table 7 Components of population change by administrative area: 1997-2007	31
Table 8 Age structure of administrative areas: 30 June 2007	32
Table 9 Rest of UK/Overseas moves by age group: 2006-2007.....	33
Table 10 Land area and population density, by administrative area: 30 June 2007	34

List of Figures

Figure 1	Estimated population of Scotland, 1951-2007	3
Figure 2	Natural change and net migration, 1951-2007	4
Figure 3	Estimated population by age and sex, 30 June 2007	5
Figure 4	The changing age structure of Scotland's population, 1997-2007	6
Figure Ya	Type of in-migration by Council areas, 2006–2007	8
Figure Yb	Type of out-migration by Council areas, 2006–2007	8
Figure 5a	Percentage change in population, Council areas, 1997-2007 (Map)	9
Figure 5b	Percentage change in population, Council areas, 1997-2007 (Chart)	10
Figure 6a	Percentage change in population, NHS Board areas, 1997-2007 (Map)	11
Figure 6b	Percentage change in population, NHS Board areas, 1997-2007 (Chart)	12
Figure 7	Age structure of Council areas, 30 June 2007 (% under 16, 16-64 and 65+)	13
Figure 8	Age structure of NHS Board areas, 30 June 2007 (% under 16, 16-64 and 65+)	13

Main Points

The key points in this publication are:-

- The estimated population of Scotland on 30 June 2007 was 5,144,200, a rise of 27,300 on the previous year and the highest since 1983;
- Between mid-2001 and mid-2007, Scotland's population increased by 1.6 per cent (+80,000) from 5.06 million to 5.14 million;
- Between mid-1997 and mid-2007, Scotland's population increased by 1.2 per cent (+60,860) from 5.08 million to 5.14 million;
- In the twelve months up to 30 June 2007, the number of births exceeded the number of deaths by 1,100. The last time that births exceeded deaths in Scotland was in 1996-97. In 2005-06 there were around 300 more deaths than births;
- Over the year there was a net migration gain of 26,800, the largest level recorded since current records started in 1952. This includes net gains of 8,800 people from the rest of the UK and of 16,800 people from overseas (including asylum seekers);
- Over the year 51,500 people came to Scotland from England, Wales and Northern Ireland and 42,700 left Scotland to go in the opposite direction. The net inflow of 8,800 is about the same as the previous year's 8,900 net inflow although the numbers of people entering and leaving Scotland have both fallen;
- The net inflow from overseas exceeded that from England, Wales and Northern Ireland. Over the year 37,800 people (including asylum seekers) came to Scotland from overseas and 21,000 left Scotland to go overseas. The net inflow of 16,800 is the highest ever and compares to an inflow of 12,700 in 2005-06;
- For Council areas, between mid-2006 and mid-2007, Clackmannanshire had the largest percentage population increase at +2.0 per cent followed by East Lothian (+1.7 per cent) and Perth & Kinross (+1.4 per cent). East Dunbartonshire and Inverclyde had the largest percentage population decreases at -0.6 per cent, followed by Eilean Siar and West Dunbartonshire with percentage decreases of -0.2 per cent;
- For NHS Board areas, Lothian and Borders (both +1.1 per cent), Grampian (+1.0 per cent) and Forth Valley (+0.8 per cent) had the largest percentage population increases. The only NHS Board area to have experienced a decline in population was Western Isles although this amounted to only 50 fewer people (-0.2 per cent);
- In the year to mid-2007 the **city** Council areas experienced net-losses of migrants to the rest of Scotland. However, more migrants entered from overseas than went in the other direction and, in most cases, there were also net-gains from the rest of the UK;
- Population density was 66 persons per square kilometre for Scotland and ranged from 8 persons per square kilometre in Highland Council area to 3,316 persons per square kilometre in Glasgow City Council area.

1. Background

1.1 This paper summarises the Registrar General for Scotland's mid-2007 estimates of the population of Scotland and its administrative areas. Some relevant historical information and a table giving land areas and population densities are also presented.

1.2 These population estimates are produced using the demographic cohort component method. The estimates are based on the 2001 Census. Each year the population is 'aged on' one year (that is, the 0 year olds become 1 year olds, and so on), the number of births in the year are added, the number of deaths subtracted and adjustments are made for estimated migration and other changes in special populations. It is important to remember that while the number of births and deaths are considered to be almost complete, there is no comprehensive source of migration data for moves within Scotland, to the rest of the UK, or to the rest of the world. Estimates of migration are made using the best proxy sources available including health service patient registrations and survey information. Therefore, any error in the estimates is likely to be due to the migration estimates, particularly the international estimates. The method used to estimate migration is described in Section 6.

1.3 The Scottish Government has introduced a target to match average European (EU15) population growth over the period from 2007 to 2017. The population estimates in this publication will form the baseline for measuring how Scotland performs against this target. More details can be found on the Scotland Performs website at <http://www.scotland.gov.uk/About/scotPerforms/purposes>

1.4 Population estimates are used for a variety of different purposes including resource allocation and planning of services such as education and health.

2. The Population of Scotland

2.1 The estimated population of Scotland on 30 June 2007 was 5,144,200 – the highest since 1983. The increase of 27,300 on the previous year was the biggest single year increase since 1946-47. There are almost 90,000 more people in Scotland than in 2002, when the population hit its lowest level since just after the Second World War. In the twelve months to mid-2007, there was a net migration gain of 26,800, the largest level recorded since current records started in 1952. This consisted of a net gain of 8,800 people from the rest of the UK, a net gain of 16,800 from overseas (including asylum seekers) and a net gain of 1,200 due to movements to and from the armed forces. Other changes (including changes in the prison population, and changes in the number of armed forces stationed in Scotland) amounted to a decrease of 600 people. Compared with the previous year there were more births (+3.2 per cent) and slightly more deaths (+0.7 per cent). The number of births in the twelve months up to mid-2007 exceeded the number of deaths by 1,100. The last time that births exceeded deaths in Scotland was in 1996-97. In 2005-06 there were around 300 more deaths than births.

2.2 This is the fifth year in a row that the Scottish population has increased and this recent increase has been largely a result of more people migrating into Scotland than leaving. In 2006-07 around 51,500 people came to Scotland from England, Wales and Northern Ireland and 42,700 left Scotland to go in the opposite direction. The resulting net inflow of 8,800 was very similar to the previous year's 8,900 net inflow although around 1,800 fewer people moved in each direction.

2.3 The overseas net gain of 16,800 came from an inflow of 37,800 and an outflow of 21,000. This record net gain from overseas compares to a net inflow of 12,700 the previous year which was itself a record. The difference is a result of fewer people leaving Scotland to go overseas despite slightly fewer people moving in the other direction. Estimating international migration is particularly difficult. The estimate is based primarily on the International Passenger Survey (IPS) which is a sample survey conducted at main airports and ports across the UK. The sample size for Scotland is very small with around 180 contacts in 2006-07. Internationally, a migrant is defined as someone who changes their country of usual residence for 12 months or more, so a short-term seasonal migrant worker will not be counted in the migration estimates or in the mid-year population estimates. More details about the migration data sources and definitions used can be found in Section 6.

2.4 For comparison purposes it is better to look at a time frame of longer than one year, as population change tends to fluctuate from year to year, particularly for smaller areas. Between mid-2001 and mid-2007, Scotland's population increased by 1.6 per cent (+80,000) from 5.06 million to 5.14 million (Table 6). Over the last 10 years, between mid-1997 and mid-2007, Scotland's population increased by 1.2 per cent (+60,860) from 5.08 million (Table 7 and Figure 1). As shown by Figure 2, the main reason for the smaller increase over the longer period is that there was a negative net migration for the early years of the period 1997-2007. Natural change (births minus deaths) was also negative for most of this period.

Figure 1 Estimated population of Scotland, 1951-2007

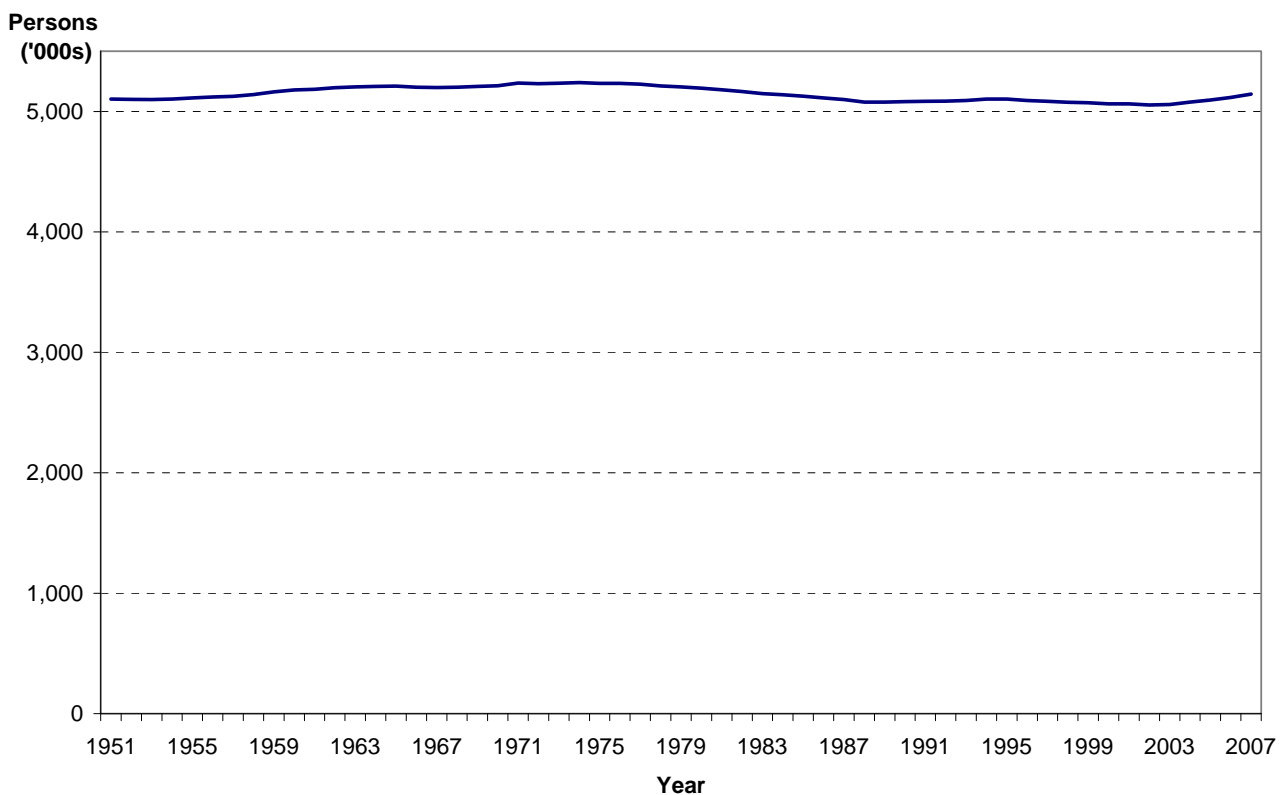
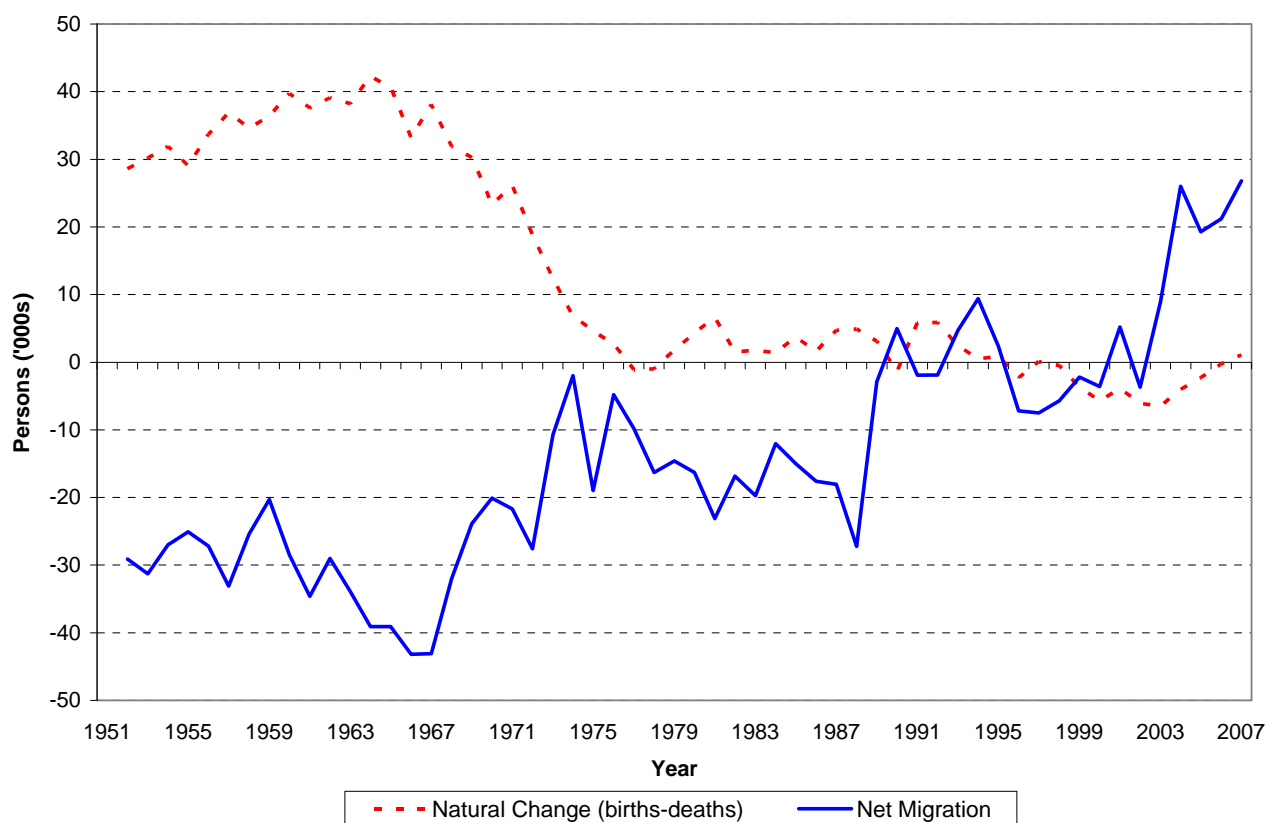


Figure 2 Natural change and net migration, 1951-2007



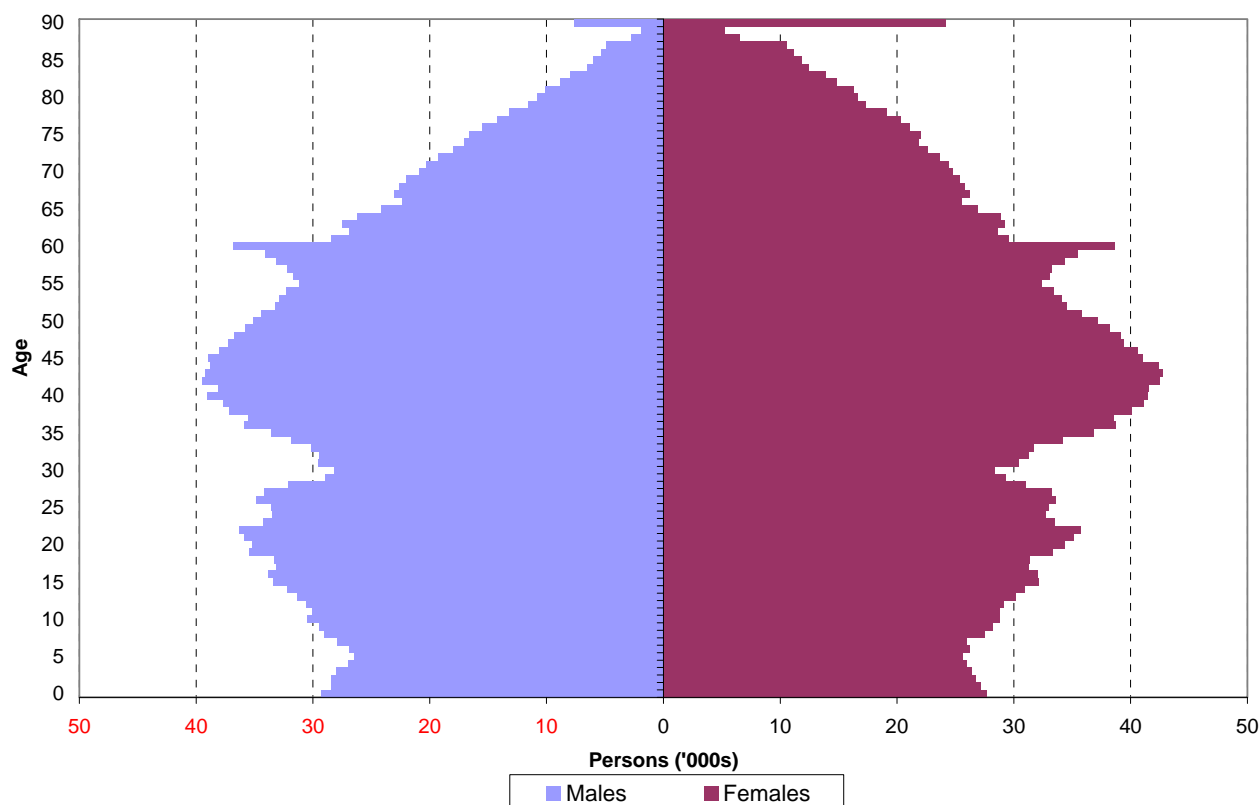
2.5 Table 9 shows movements to and from the UK and overseas between mid-2006 and mid-2007 by age group. The main source of data for the overseas migration calculations is the International Passenger Survey and as the sample size is small for Scotland (about 180) an age and sex distribution is assumed using information about General Practitioner (GP) registrations. The method used to estimate international migration is described in Section 6.

2.6 Migrants tend to be younger than the general population. Of in-migrants to Scotland, 46 per cent of those from the rest of the UK and 68 per cent of those from overseas were aged 16-34 years, compared with 24 per cent of the resident population for this age group. Only 5 per cent of people coming to Scotland from the rest of the UK were aged 65 and over.

3. The Age and Sex Structure of the Population

3.1 The age and sex composition is one of the most important aspects of the population. Changes in different age groups will have different social and economic impacts. For example, increases in the elderly population are likely to place a greater demand on health and social services. Scotland's estimated population is shown by age and sex in Figure 3.

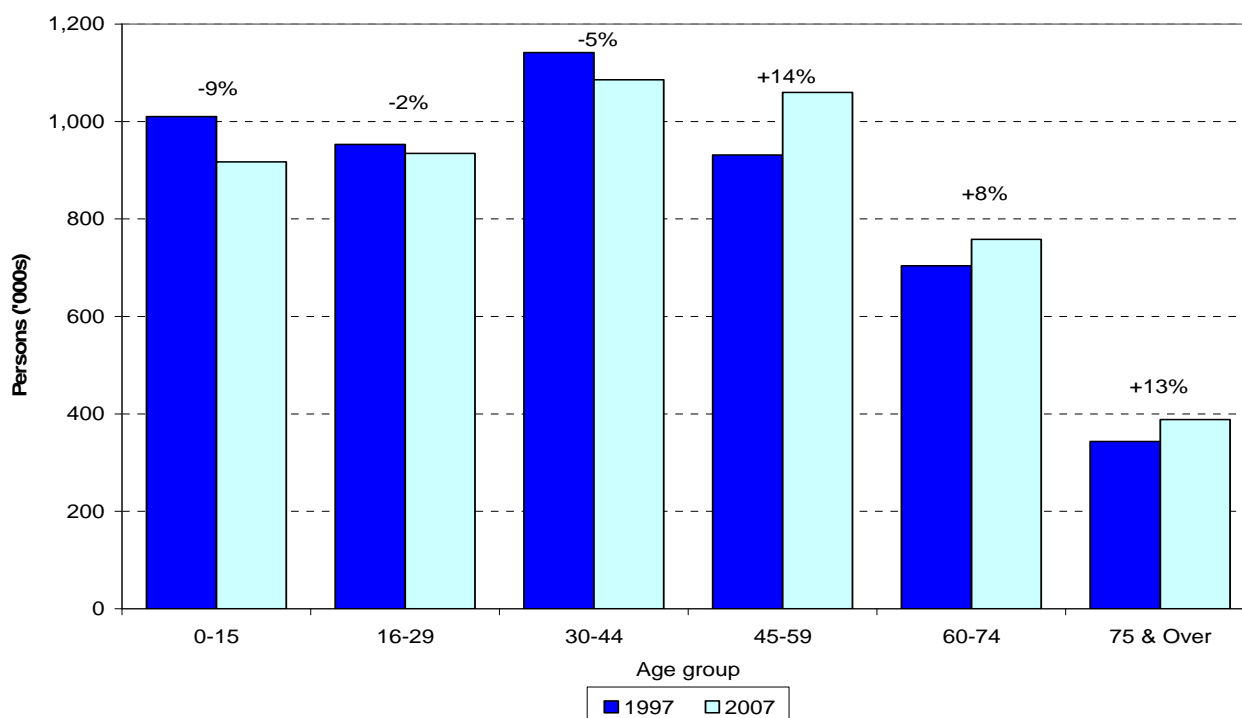
Figure 3 Estimated population by age and sex, 30 June 2007



3.2 Among older people, particularly over 75, the higher number of females reflects the longer expectation of life for women, partly as a result of higher rates of male mortality during the Second World War. The effects of a flu epidemic in 1922 and lower levels of fertility during the First World War are also evident, as seen in the sharp decline in the population aged over 85. The two baby booms of 1947 and the 1960s can also be seen with a sharp peak at age 60 and another peak between the ages of around 35 and 45. These baby boomers along with relatively low fertility rates are the main reasons why Scotland's population is likely to age in the future, though the scale of ageing is open to debate.

3.3 The changing age structure of the population since 1997 is illustrated in Figure 4. The ageing of the population is evident in the rises in the older age groups (14 per cent in the 45-59 age group, 8 per cent in the 60-74 age group and 13 per cent in the 75 and over age group) and the falls in the younger age groups (-9 per cent in the under 16 age group, -2 per cent in the 16-29 age group and -5 per cent in the 30-44 age group).

Figure 4 The changing age structure of Scotland's population, 1997-2007



4. Results for Administrative Areas

4.1 Population Change 2006-2007

4.1.1 Population estimates for each Council and NHS Board area, together with details of the components of population change (births, deaths, net migration and other changes) for the period mid-2006 to mid-2007, are shown in Table 2, Table 3 and Table 4.

4.1.2 Amongst the Council areas, Clackmannanshire had the largest percentage population increase at +2.0 per cent followed by East Lothian (+1.7 per cent), Perth & Kinross (+1.4 per cent) and Aberdeen City, Aberdeenshire and West Lothian (all +1.2 per cent). Seven councils experienced a decrease in population although the decreases were mainly very small. These were East Dunbartonshire and Inverclyde (both -0.6 per cent), Eilean Siar and West Dunbartonshire (both -0.2 per cent) and Argyll & Bute, Dundee City and East Renfrewshire (where the population fell by less than 0.1 per cent).

4.1.3 For the NHS Board areas, Lothian and Borders (both +1.1 per cent), Grampian (+1 per cent) and Forth Valley (+0.8 per cent) had the largest percentage population increases. The only NHS Board area to have experienced a decline in population was Western Isles although this amounted to only 50 fewer people (-0.2 per cent).

4.2 Components of migration 2006-2007

4.2.1 For most areas, the main cause of population change in the year to mid-2007 was migration. Table 5 shows, for this period, migration flows to and from each Council and NHS Board area for people moving within Scotland (i.e. between one Council area and another or between one NHS Board area and another), people moving between Scotland and the rest of the UK and people moving between Scotland and overseas. In Table 5 and in Figure 5a and Figure 5b movements to and from the armed forces are included in the rest of UK figures.

In-migration

4.2.2 As Figure 5a shows, different Councils attract migrants from different areas. In some Council areas (such as East Renfrewshire, East Dunbartonshire, Midlothian, East Lothian and East Ayrshire) most of the migrants came from other Council areas within Scotland. For example, of the 3,271 people arriving in East Renfrewshire, 2,850 (87 per cent) were from elsewhere in Scotland, 311 (10 per cent) from the rest of the UK and 110 (3 per cent) were from overseas.

4.2.3 In other areas (such as Dumfries & Galloway, Moray, Highland and the Shetland Islands) more than half of the migrants entering the area came from outside Scotland with most of these coming from the rest of the UK. In some cases this will be partly due to movements to and from the armed forces.

4.2.4 In the city authorities, particularly City of Edinburgh, Glasgow City and Aberdeen City, the pattern was again for high proportions of migrants to come from outside Scotland. In Aberdeen City and Glasgow City most of these were from overseas whilst in City of Edinburgh around half were from overseas and half from the rest of the UK.

Out-migration

4.2.5 As Figure 5b shows, there are also differences in the destinations of people migrating out of Council areas. Often the area to which most out-migrants moved was the same area from which most in-migrants had arrived. For example most of the migrants leaving Midlothian, East Dunbartonshire and East Renfrewshire moved elsewhere in Scotland and, as described above, most of the migrants arriving in these Council areas came from elsewhere in Scotland.

Net migration

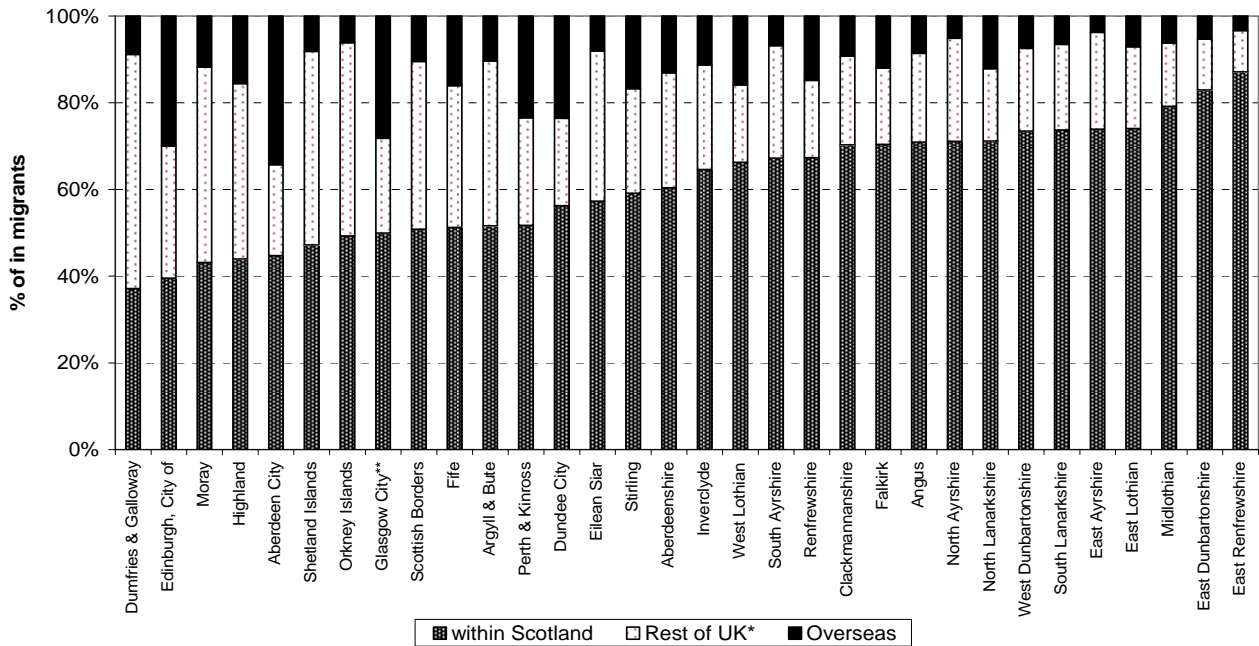
4.2.8 As a result of these different patterns in both in- and out- migration, some councils experienced net gains from one region but net losses to another whilst others experienced gains from all areas. Only one council – Inverclyde – lost migrants to all areas although the net losses, particularly to overseas, were relatively small.

4.2.9 In some Council areas (such as Aberdeenshire, Fife, Perth & Kinross and West Lothian) more people arrived from each of the regions (within Scotland, Rest of UK and overseas) than left. Even amongst these councils there were different patterns with Aberdeenshire and West Lothian mostly gaining from within Scotland, Fife from the rest of the UK and Perth & Kinross from overseas.

4.2.10 Other Council areas (such as East, North and South Ayrshire) had net gains from other areas within Scotland and from the rest of the UK but lost more than they gained from overseas.

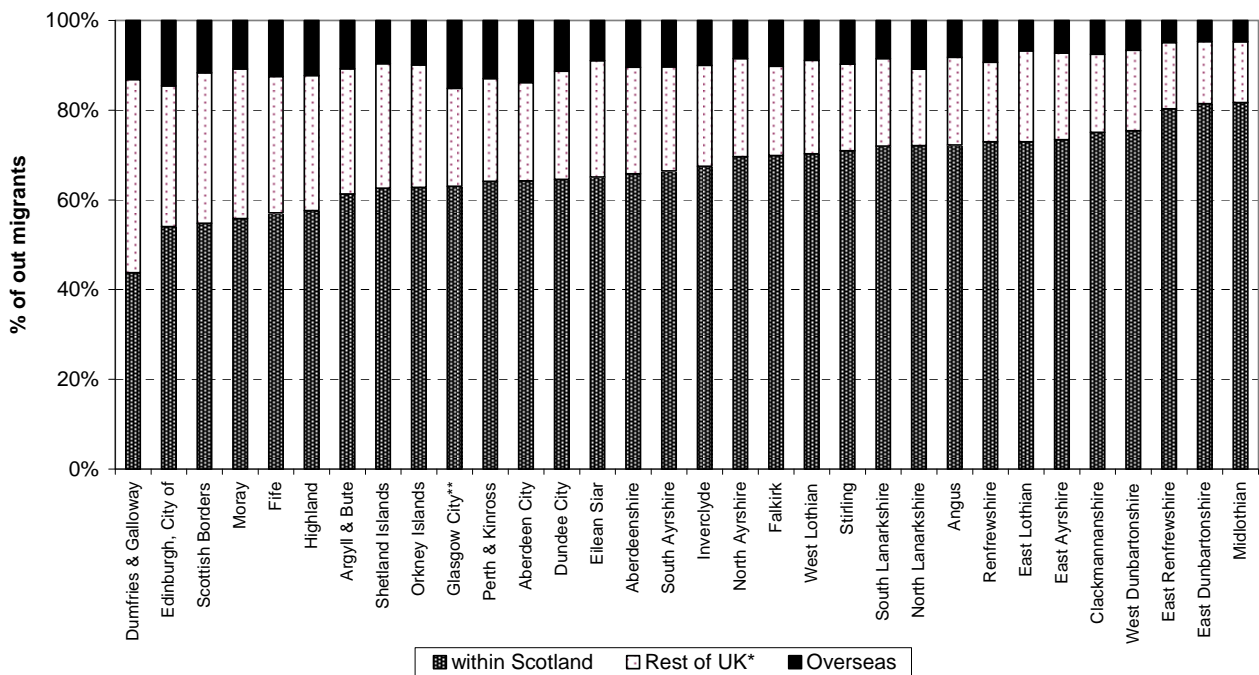
4.2.11 Most of the city authorities lost migrants to other areas of Scotland but gained from the rest of the UK and, in particular, overseas. For example, there was a net gain of over 3,600 migrants in the City of Edinburgh. However, over 2,100 more people left Edinburgh to move elsewhere in Scotland than arrived from the rest of Scotland. There was a gain of almost 900 people from the rest of the UK and of almost 4,900 people from overseas.

Figure 5a Type of in-migration by Council areas, 2006–2007



* Includes moves from the armed forces
 ** Includes asylum seekers

Figure 5b Type of out-migration by Council areas, 2006–2007



* Includes moves to the armed forces
 ** Includes returning asylum seekers

4.3 Population Change 1997-2007

4.3.1 Details of population changes between 1997 and 2007 for administrative areas are shown in Table 7. These changes are illustrated for Council areas in the map at Figure 6a and the chart at Figure 6b which both show the percentage change in the population of Council areas between 1997 and 2007.

Figure 6a Percentage change in population, Council areas, 1997-2007 (Map)

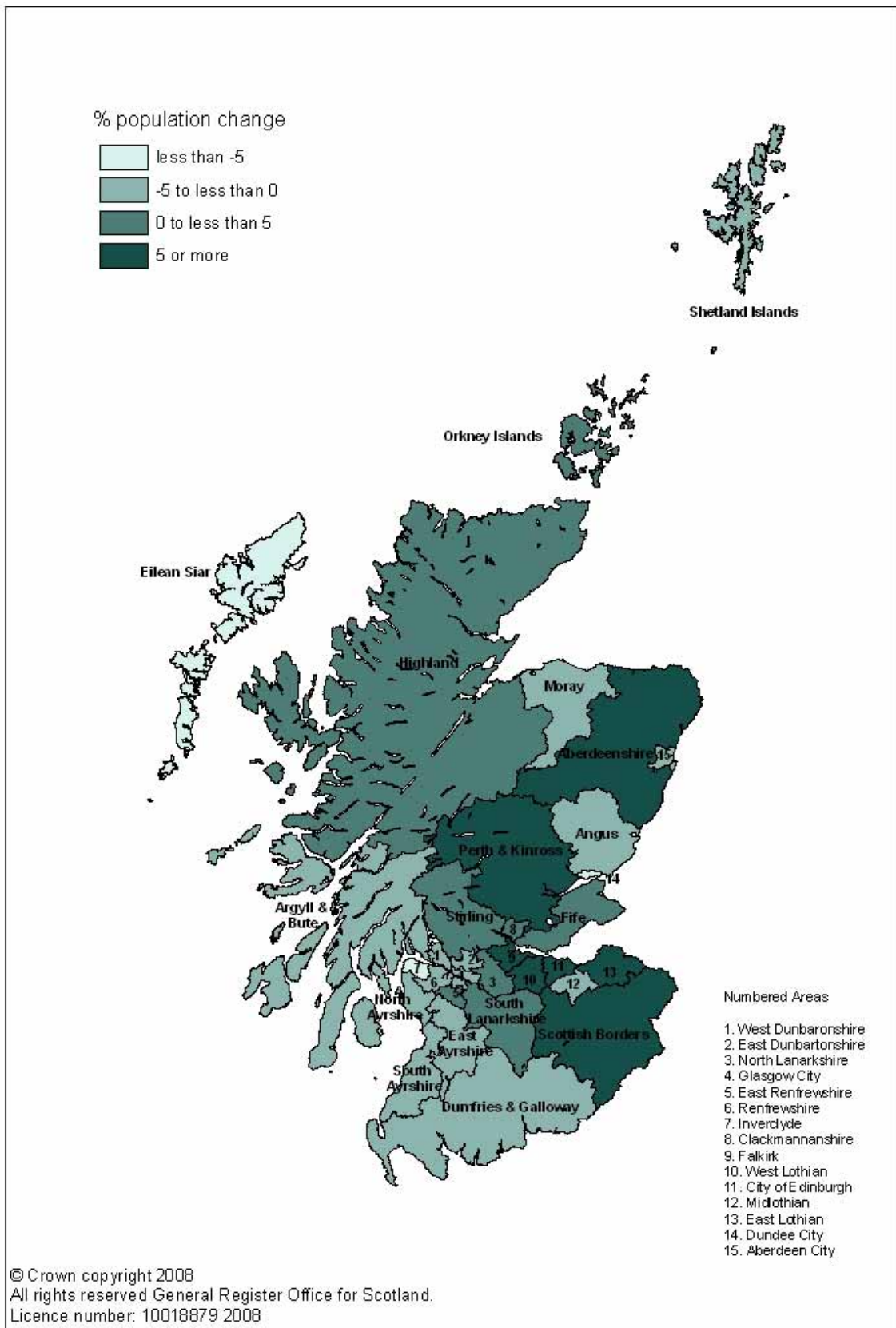
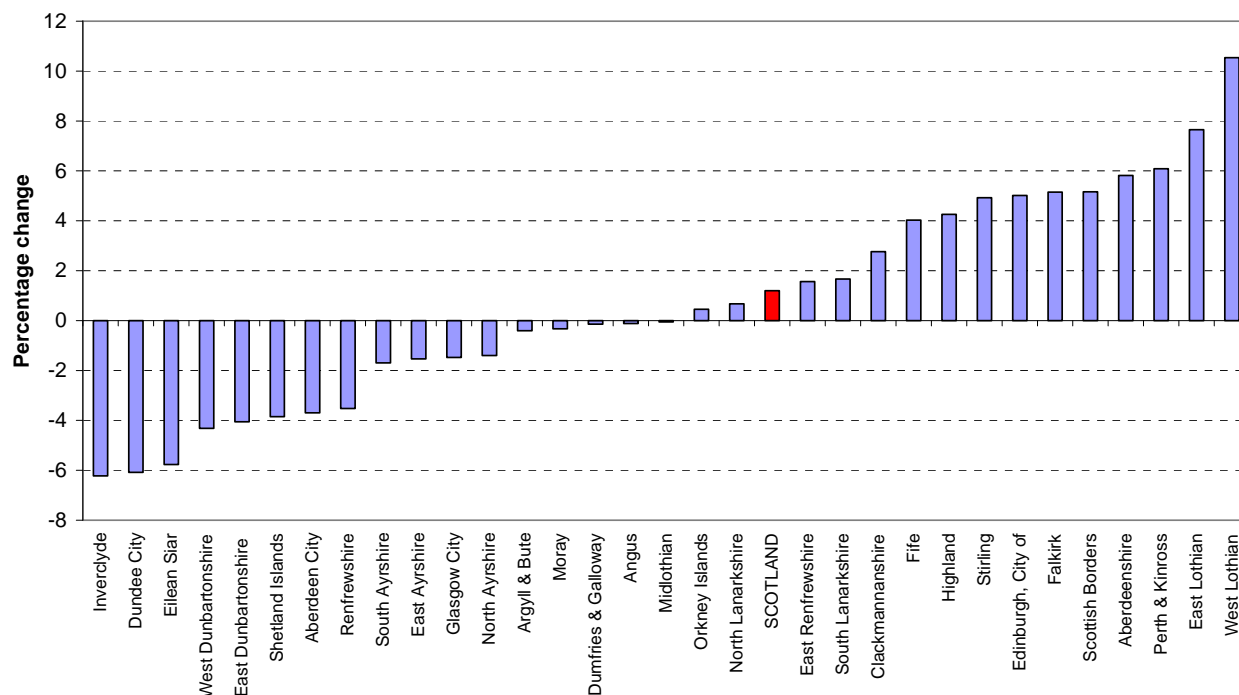


Figure 6b Percentage change in population, Council areas, 1997-2007 (Chart)



4.3.2 Between 1997 and 2007, West Lothian (+10.5 per cent), East Lothian (+7.6 per cent), Perth & Kinross (+6.1 per cent) and Aberdeenshire (+5.8 per cent) showed the greatest percentage increases for Council areas. The largest absolute increase in numbers was in the City of Edinburgh (+22,350). Inverclyde (-6.2 per cent), Dundee City (-6.1 per cent), Eilean Siar (-5.8 per cent) and West Dunbartonshire (-4.3 per cent) showed the greatest percentage decreases during this period. The largest absolute decrease in numbers was in Dundee City (-9,200).

4.3.3 The map at Figure 7a and the chart at Figure 7b show the percentage change in population between 1997 and 2007 for each NHS Board area. The largest percentage increases in population were in Lothian (+5.9 per cent), Borders (+5.2 per cent) and Forth Valley (+4.5 per cent). The greatest percentage decreases occurred in the Western Isles (-5.8 per cent) and Shetland (-3.9 per cent).

Figure 7a Percentage change in population, NHS Board areas, 1997-2007 (Map)

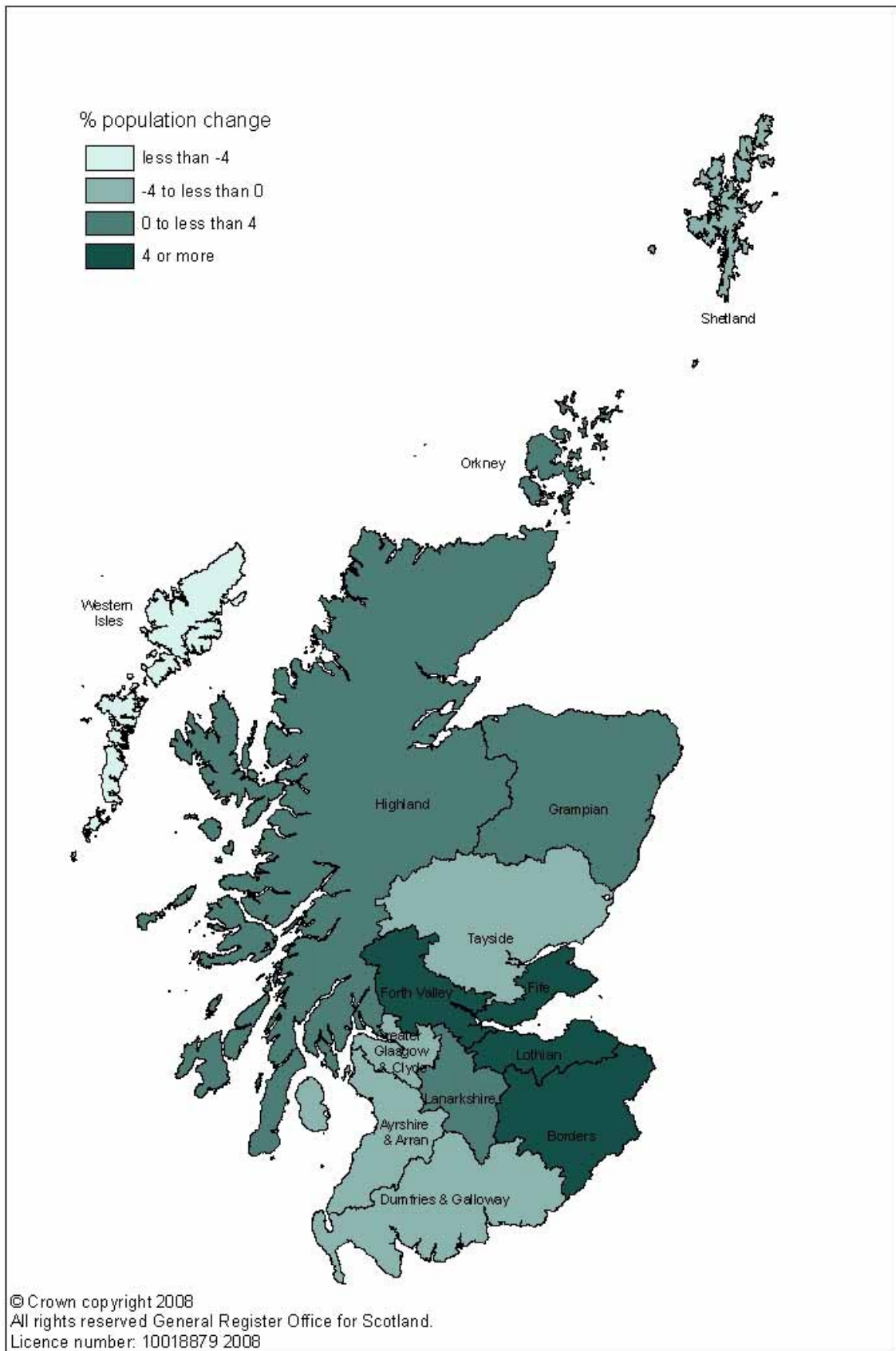
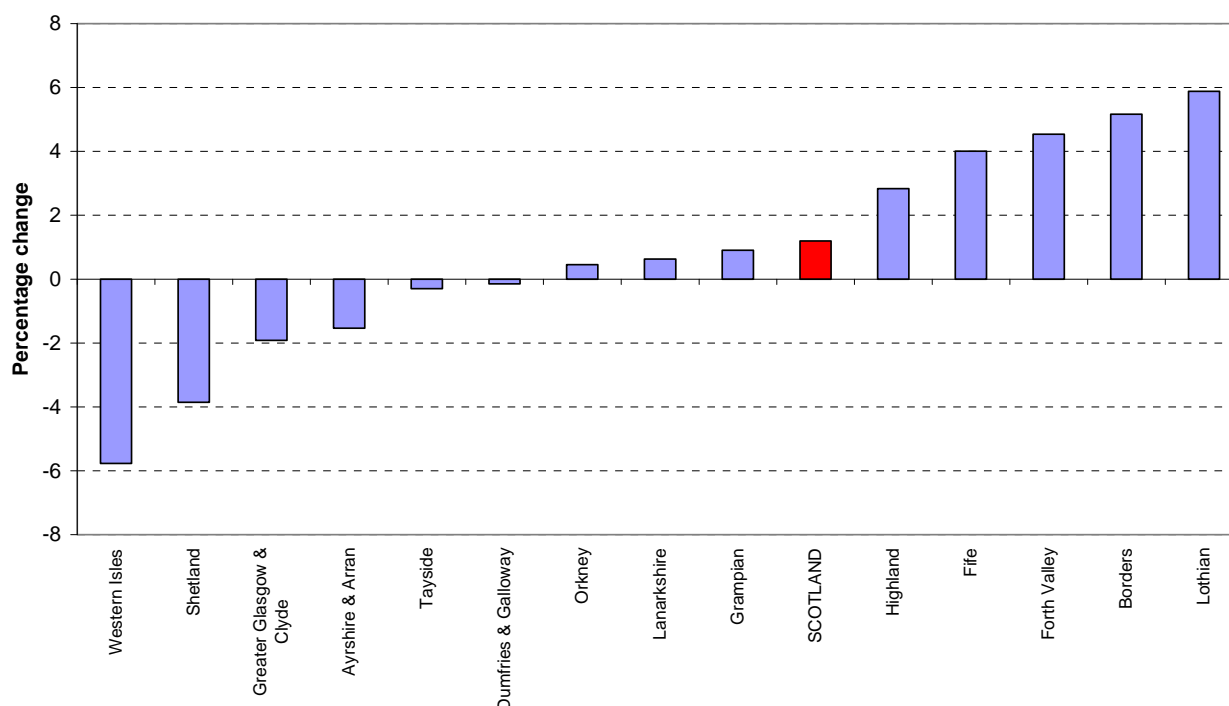


Figure 7b Percentage change in population, NHS Board areas, 1997-2007 (Chart)



4.4 Sex and Age Structure of Administrative Areas in Scotland

4.4.1 There were more females than males in Scotland in mid-2007 and this is the case for all Council areas other than Moray and Shetland Islands and for all NHS Board areas other than Shetland Islands. Table 8 shows the “sex ratio” for each Council and NHS Board area in Scotland. The sex ratio is the male population divided by the female population (e.g. a sex ratio of 0.95 means that for every 100 females there are 95 males). The sex ratio ranged from 0.90 in Dundee City, Midlothian, North Ayrshire and West Dunbartonshire to 1.01 in Shetland Islands. For the NHS Board areas, the sex ratio ranged from 0.91 in Ayrshire & Arran to 1.01 in Shetland.

4.4.2 Though the pattern of age distribution is complex, some general themes can be seen from Table 8. The major cities had the highest proportions of males and females of working age¹. For example, in Edinburgh City 71 per cent of males and 64 per cent of females were of working age and in Glasgow City there were similar results (71 per cent of males and 63 per cent of females). The highest proportions of people of pensionable age² tended to be in rural areas such as Dumfries & Galloway (19 per cent of males and 30 per cent of females) and Eilean Siar (18 per cent of males and 30 per cent of females).

4.4.3 These patterns can also be seen in Figure 8 and Figure 9 which show the proportion of the population under 16, aged 16-64, and 65 and over for Council and NHS Board areas respectively (sorted by proportion of population aged 65 and over).

¹ 16-64 for men, 16-59 for women

² 65 and over for men, 60 and over for women

Figure 8 Age structure of Council areas, 30 June 2007 (% under 16, 16-64 and 65+)

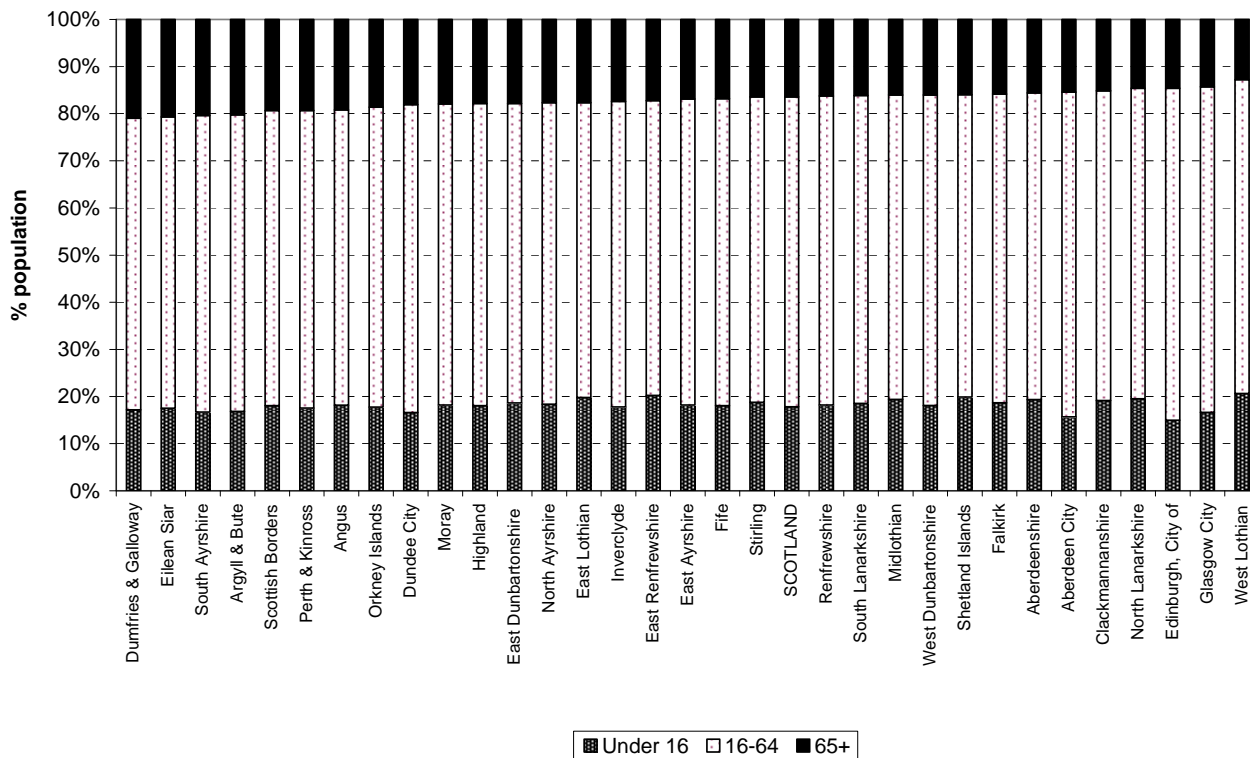
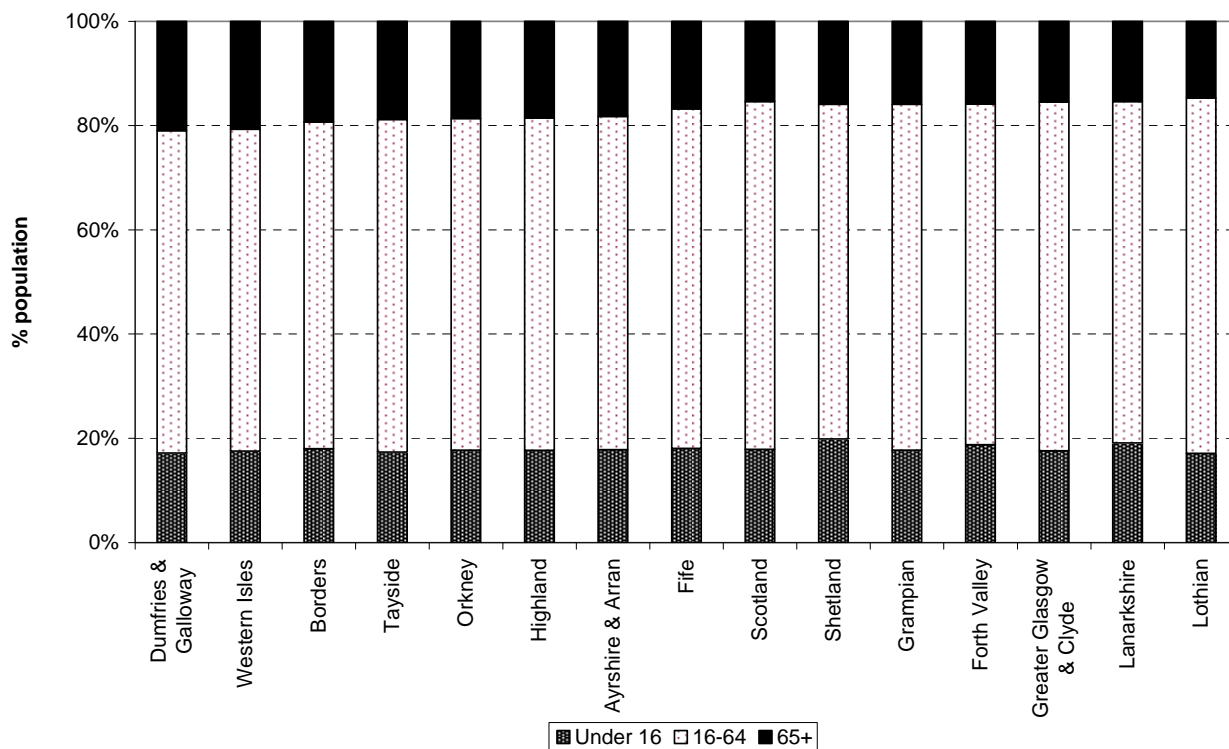


Figure 9 Age structure of NHS Board areas, 30 June 2007 (% under 16, 16-64 and 65+)



5. Population Density

5.1 Information on land areas and population densities is shown in Table 10. The mid-2007 population density was 66 persons per square kilometre for Scotland and ranged from 8 persons per square kilometre in the Highland Council area to 3,316 persons per square kilometre in Glasgow City Council area.

Table 1 Estimated population by age and sex, Scotland: 30 June 2007

Age	Persons	Males	Females	Age	Persons	Males	Females	Age	Persons	Males	Females
All ages	5,144,200	2,485,599	2,658,601								
0	57,003	29,289	27,714	30	56,549	28,173	28,376	60	75,487	36,858	38,629
1	55,597	28,420	27,177	31	60,014	29,555	30,459	61	58,063	28,466	29,597
2	55,206	28,422	26,784	32	60,793	29,500	31,293	62	55,537	26,908	28,629
3	54,439	28,006	26,433	33	61,864	30,130	31,734	63	56,735	27,473	29,262
4	52,955	27,011	25,944	34	66,076	31,892	34,184	64	55,171	26,244	28,927
0 - 4	275,200	141,148	134,052	30 - 34	305,296	149,250	156,046	60 - 64	300,993	145,949	155,044
5	52,093	26,461	25,632	35	70,414	33,576	36,838	65	51,067	24,146	26,921
6	53,147	26,917	26,230	36	74,659	35,901	38,758	66	47,935	22,410	25,525
7	53,979	27,948	26,031	37	74,138	35,545	38,593	67	49,342	23,073	26,269
8	56,565	29,053	27,512	38	77,229	37,139	40,090	68	48,473	22,671	25,802
9	57,656	29,435	28,221	39	78,848	37,683	41,165	69	47,448	22,060	25,388
5 - 9	273,440	139,814	133,626	35 - 39	375,288	179,844	195,444	65 - 69	244,265	114,360	129,905
10	59,314	30,531	28,783	40	80,562	39,074	41,488	70	45,691	20,919	24,772
11	58,911	30,126	28,785	41	79,619	38,085	41,534	71	44,734	20,295	24,439
12	59,676	30,554	29,122	42	82,024	39,483	42,541	72	43,051	19,338	23,713
13	61,601	31,406	30,195	43	82,001	39,217	42,784	73	40,660	17,977	22,683
14	63,192	32,262	30,930	44	81,262	38,799	42,463	74	38,975	17,060	21,915
10 - 14	302,694	154,879	147,815	40 - 44	405,468	194,658	210,810	70 - 74	213,111	95,589	117,522
15	65,617	33,454	32,163	45	80,095	39,028	41,067	75	38,647	16,603	22,044
16	65,991	33,887	32,104	46	78,699	38,028	40,671	76	36,686	15,537	21,149
17	64,465	33,206	31,259	47	76,702	37,275	39,427	77	34,649	14,284	20,365
18	64,698	33,358	31,340	48	75,895	36,722	39,173	78	32,422	13,251	19,171
19	68,802	35,459	33,343	49	74,061	35,851	38,210	79	28,976	11,625	17,351
15 - 19	329,573	169,364	160,209	45 - 49	385,452	186,904	198,548	75 - 79	171,380	71,300	100,080
20	69,614	35,266	34,348	50	72,351	35,162	37,189	80	27,496	10,841	16,655
21	71,089	35,936	35,153	51	70,362	34,492	35,870	81	26,479	10,120	16,359
22	72,056	36,311	35,745	52	67,810	33,240	34,570	82	23,712	8,888	14,824
23	67,803	34,311	33,492	53	67,056	32,896	34,160	83	21,916	7,968	13,948
24	66,248	33,480	32,768	54	65,760	32,292	33,468	84	18,984	6,498	12,486
20 - 24	346,810	175,304	171,506	50 - 54	343,339	168,082	175,257	80 - 84	118,587	44,315	74,272
25	66,567	33,561	33,006	55	63,587	31,199	32,388	85	17,864	5,986	11,878
26	68,467	34,900	33,567	56	64,847	31,749	33,098	86	16,507	5,362	11,145
27	67,457	34,185	33,272	57	65,466	32,206	33,260	87	15,509	4,894	10,615
28	63,186	32,144	31,042	58	67,529	33,176	34,353	88	9,397	2,799	6,598
29	58,315	28,991	29,324	59	69,613	34,118	35,495	89	7,188	1,956	5,232
25 - 29	323,992	163,781	160,211	55 - 59	331,042	162,448	168,594	85 - 89	66,465	20,997	45,468
								90 & over	31,805	7,613	24,192

Age group summaries

	Persons	Males	Females
All aged under 16	916,951	469,295	447,656
All aged under 18	1,047,407	536,388	511,019
All aged 16 & over	4,227,249	2,016,304	2,210,945
All aged 18 & over	4,096,793	1,949,211	2,147,582
All aged 16-29	934,758	474,995	459,763
All aged 30-44	1,086,052	523,752	562,300
All aged 45-64 (M), 45-59 (F)	1,205,782	663,383	542,399
All aged 65 & over (M), 60 & over (F)	1,000,657	354,174	646,483
All aged 75 & over	388,237	144,225	244,012

Table 2 Estimated population by sex, single year of age and administrative area: 30 June 2007

Area	All Ages	Age																															
		0	1	2	3	4	5	6	7	8	9	10	11	12	13	14	15	16	17	18	19	20	21	22	23	24	25	26	27	28	29	30	
SCOTLAND	5,144,200	57,003	55,597	55,206	54,439	52,955	52,093	53,147	53,979	56,565	57,656	59,314	58,911	59,676	61,601	63,192	65,617	65,991	64,465	64,698	68,802	69,614	71,089	72,056	67,803	66,248	66,567	68,467	67,457	63,186	58,315	56,549	
Council areas																																	
Aberdeen City	209,260	2,361	2,099	2,111	1,909	2,005	1,895	1,932	1,916	2,013	1,936	2,003	1,956	2,085	2,143	2,224	2,240	2,346	2,316	2,746	3,342	3,530	3,681	3,577	3,550	3,762	3,719	3,711	3,944	3,411	3,133	3,053	
Aberdeenshire	239,160	2,724	2,766	2,705	2,669	2,600	2,606	2,679	2,854	2,949	2,924	3,044	2,986	3,063	3,236	3,235	3,255	3,315	3,098	2,888	2,632	2,619	2,481	2,451	2,264	2,037	2,057	2,193	2,152	2,125	2,190	2,176	
Angus	109,870	1,155	1,134	1,174	1,186	1,173	1,135	1,185	1,193	1,211	1,274	1,338	1,298	1,303	1,353	1,360	1,462	1,450	1,341	1,231	1,133	1,117	1,148	1,146	1,036	977	1,012	980	971	973	993	905	
Argyll & Bute	91,350	803	753	796	879	792	867	821	891	1,023	1,017	1,087	1,086	1,066	1,162	1,176	1,195	1,151	1,175	1,100	974	928	1,007	946	915	891	746	835	824	692	683	763	
Clackmannanshire	49,900	563	595	572	538	511	573	555	555	577	594	609	639	623	621	713	702	688	678	602	627	622	593	566	594	532	531	573	572	508	538	514	
Dumfries & Galloway	148,300	1,521	1,475	1,455	1,399	1,405	1,322	1,404	1,438	1,514	1,719	1,637	1,782	1,779	1,871	1,847	1,891	1,918	1,776	1,599	1,584	1,541	1,441	1,455	1,321	1,167	1,210	1,312	1,281	1,254	1,170	1,114	
Dundee City	142,150	1,585	1,495	1,594	1,471	1,406	1,353	1,336	1,299	1,342	1,471	1,559	1,504	1,407	1,492	1,646	1,606	1,766	1,822	2,068	2,558	2,723	2,819	2,799	2,404	2,224	2,269	2,421	2,362	2,219	1,612	1,488	
East Ayrshire	119,570	1,335	1,289	1,266	1,300	1,246	1,191	1,266	1,245	1,273	1,359	1,341	1,364	1,433	1,537	1,615	1,671	1,671	1,621	1,603	1,524	1,513	1,511	1,409	1,320	1,274	1,303	1,235	1,275	1,235	1,206	1,099	
East Dunbartonshire	104,850	881	990	993	1,044	1,113	1,095	1,141	1,148	1,280	1,367	1,286	1,383	1,362	1,459	1,460	1,526	1,533	1,458	1,631	1,233	1,247	1,269	1,359	1,191	1,197	1,077	1,026	1,015	942	780	854	
East Lothian	94,440	1,103	1,151	1,091	1,131	998	1,065	1,031	1,130	1,166	1,195	1,318	1,223	1,220	1,258	1,267	1,365	1,299	1,228	1,086	972	1,029	964	963	803	841	798	774	706	701	733	808	
East Renfrewshire	89,260	897	921	999	1,035	1,033	1,022	1,072	1,117	1,168	1,218	1,229	1,197	1,301	1,307	1,261	1,290	1,231	1,267	1,264	1,105	1,042	1,062	1,081	1,012	863	814	840	775	727	668	643	
Edinburgh, City of	468,070	4,876	4,645	4,348	4,295	4,165	4,076	4,024	4,154	4,284	4,298	4,218	4,456	4,414	4,446	4,643	4,832	4,853	5,139	5,856	7,136	7,990	8,838	9,682	9,423	9,636	10,171	10,086	10,166	9,029	8,114	7,668	
Eilean Siar	26,300	275	249	234	278	269	255	239	276	288	272	327	329	301	330	322	365	348	348	277	251	236	222	232	213	176	192	231	254	257	203	253	
Falkirk	150,720	1,848	1,769	1,785	1,678	1,678	1,565	1,686	1,659	1,734	1,784	1,827	1,799	1,820	1,796	1,921	1,887	2,061	1,921	1,878	1,955	1,774	1,649	1,761	1,490	1,617	1,819	1,862	1,824	1,808	1,782	1,706	
Fife	360,500	4,016	3,997	3,880	3,890	3,796	3,642	3,906	3,789	4,044	4,047	4,098	4,174	4,328	4,418	4,536	4,556	4,650	4,515	4,653	5,375	5,364	5,294	5,033	4,515	4,134	4,077	4,179	4,242	3,907	3,556	3,564	
Glasgow City	581,940	6,879	6,534	6,439	6,024	5,792	5,543	5,614	5,590	5,619	5,816	6,015	5,771	6,021	5,969	6,426	6,837	6,826	6,896	7,896	9,403	10,028	10,642	11,151	10,768	11,228	11,030	11,462	11,293	10,568	9,595	8,969	
Highland	217,440	2,256	2,306	2,255	2,260	2,218	2,184	2,320	2,227	2,497	2,580	2,568	2,601	2,632	2,686	2,758	2,873	2,852	2,640	2,415	2,179	2,086	2,104	2,152	2,037	1,860	2,050	2,363	2,237	2,284	2,048	2,021	
Inverclyde	81,080	861	830	899	855	826	763	814	838	901	910	969	960	958	969	968	1,094	1,081	1,094	1,031	1,109	1,060	1,146	1,114	988	977	933	961	971	832	812	759	
Midlothian	79,510	912	940	874	914	897	833	936	950	1,027	987	1,007	958	1,000	1,025	990	1,177	1,170	1,044	1,001	1,052	964	993	900	875	812	826	761	746	765	655	736	
Moray	86,870	951	904	875	827	834	780	900	942	972	1,051	1,071	1,094	1,084	1,126	1,163	1,234	1,183	1,172	1,118	961	992	908	988	904	818	806	766	826	859	781	791	
North Ayrshire	135,760	1,500	1,498	1,435	1,445	1,469	1,426	1,421	1,425	1,424	1,537	1,634	1,660	1,727	1,779	1,764	1,823	1,933	1,760	1,719	1,803	1,710	1,647	1,610	1,455	1,477	1,481	1,465	1,364	1,354	1,257	1,213	
North Lanarkshire	324,680	4,044	3,872	3,934	3,929	3,780	3,793	3,698	3,681	4,008	3,991	4,158	4,056	3,912	4,107	4,033	4,414	4,384	4,173	4,209	4,221	4,179	4,306	4,401	4,152	4,120	4,196	4,174	4,271	3,945	3,655	3,506	
Orkney Islands	19,860	198	198	199	174	184	193	157	191	232	203	257	250	268	282	247	292	289	286	226	191	178	174	196	170	157	164	192	173	205	180	154	
Perth & Kinross	142,140	1,380	1,316	1,409	1,430	1,410	1,401	1,544	1,509	1,553	1,650	1,697	1,596	1,659	1,787	1,828	1,829	1,852	1,636	1,647	1,589	1,660	1,746	1,718	1,769	1,540	1,466	1,487	1,350	1,316	1,274	1,259	
Renfrewshire	169,600	1,875	1,886	1,904	1,879	1,787	1,789	1,842	1,794	1,877	1,909	2,010	1,935	1,975	2,046	2,126	2,208	2,240	2,188	2,053	2,175	2,204	2,197	2,188	2,057	2,102	2,017	2,229	2,106	1,892	1,863	1,760	
Scottish Borders	111,430	1,148	1,126	1,173	1,175	1,165	1,203	1,167	1,250	1,222	1,215	1,329	1,388	1,365	1,330	1,438	1,413	1,434	1,396	1,190	1,156	1,040	1,037	1,010	924	909	849	945	913	910	879	931	
Shetland Islands	21,950	260	270	226	235	258	239	244	292	250	280	289	269	303	286	320	341	320	322	253	198	208	228	224	193	187	195	237	240	259	219	295	
South Ayrshire	111,690	1,057	997	1,083	1,052	1,011	1,088	1,072	1,101	1,186	1,236	1,240	1,235	1,238	1,337	1,346	1,408	1,376	1,455	1,305	1,296	1,300	1,287	1,289	1,270	1,053	1,079	1,174	979	1,078	975	890	
South Lanarkshire	309,500	3,487	3,509	3,385	3,433	3,247	3,336	3,267	3,500	3,586	3,525	3,789	3,668	3,660	3,979	3,961	4,138	4,090	3,931	3,717	3,919	3,802	3,885	4,054	3,877	3,606	3,615	3,823	3,761	3,394	3,301	3,060	
Stirling	88,190	921	896	948	987	958	878	986	993	1,100	1,075	1,129	1,090	1,119	1,125	1,132	1,225	1,163	1,330	1,462	1,847	1,546	1,388	1,232	1,154	1,010	963	926	844	817	674	772	
West Dunbartonshire	91,090	1,066	1,026	985	965	929	926	903	972	968	1,026	1,078	1,054	1,070	1,115	1,182	1,211	1,216	1,234	1,188	1,270	1,240	1,325	1,370	1,261	1,217	1,185	1,247	1,035	991	928	945	
West Lothian	167,770	2,265	2,161	2,180	2,153	1,985	2,056	1,985	2,060	2,277	2,190	2,153	2,240	2,180	2,224	2,284	2,257	2,302	2,205	2,116	2,032	2,142	2,117	1,999	1,898	1,847	1,918	1,997	1,985	1,929	1,858	1,880	
NHS Board areas																																	
Ayrshire & Arran	367,020	3,892	3,784	3,784	3,797	3,726	3,705	3,759	3,771	3,883	4,132	4,215	4,259	4,398	4,653	4,725	4,902	4,980	4,836	4,627	4,623	4,523	4,445	4,308	4,045	3,804	3,863	3,874	3,618	3,667	3,438	3,202	
Borders	111,430	1,148	1,126	1,173	1,175	1,165	1,203	1,167	1,250	1,222	1,215	1,329	1,388	1,365	1,330	1,438	1,413	1,434	1,396	1,190	1,156	1,040	1,037	1,010	924	909	849	945	913	910	879	931	
Dumfries & Galloway	148,300	1,521	1,475	1,455	1,399	1,405	1,322	1,404	1,438	1,514	1,719	1,637	1,782	1,779	1,871	1,847	1,891	1,918	1,776	1,599	1,584												

Table 2 (continued)

MALES

Area	Age																																
	All Ages	0	1	2	3	4	5	6	7	8	9	10	11	12	13	14	15	16	17	18	19	20	21	22	23	24	25	26	27	28	29	30	
SCOTLAND	2,485,599	29,289	28,420	28,422	28,006	27,011	26,461	26,917	27,948	29,053	29,435	30,531	30,126	30,554	31,406	32,262	33,454	33,887	33,206	33,358	35,459	35,266	35,936	36,311	34,311	33,480	33,561	34,900	34,185	32,144	28,991	28,173	
Council areas																																	
Aberdeen City	103,203	1,189	1,066	1,029	978	1,037	934	995	1,030	1,040	1,029	1,066	1,032	1,087	1,102	1,150	1,181	1,153	1,115	1,303	1,472	1,552	1,707	1,688	1,825	1,829	1,887	2,069	2,213	1,914	1,753	1,731	
Aberdeenshire	118,484	1,419	1,452	1,407	1,385	1,318	1,319	1,377	1,540	1,504	1,558	1,592	1,538	1,546	1,647	1,669	1,584	1,701	1,593	1,503	1,399	1,421	1,323	1,310	1,227	1,109	1,112	1,140	1,094	1,055	1,073	1,027	
Angus	53,120	601	576	592	619	588	576	599	619	639	644	686	638	648	713	692	726	814	704	637	597	582	636	615	576	497	498	511	481	524	457	423	
Argyll & Bute	45,504	409	371	420	445	410	421	417	452	491	522	564	534	574	591	566	593	597	568	636	570	552	633	560	573	528	465	512	502	402	377	402	
Clackmannanshire	24,301	291	302	299	279	262	315	272	271	317	291	311	315	317	299	354	353	331	346	307	316	323	339	310	337	293	262	289	284	255	242	231	
Dumfries & Galloway	71,791	799	747	744	702	715	683	737	741	799	848	817	941	893	962	916	963	963	949	863	872	815	759	781	656	596	582	685	589	591	553	556	
Dundee City	67,411	801	758	836	771	738	693	680	652	687	758	797	781	752	775	843	779	873	900	1,004	1,164	1,236	1,335	1,388	1,200	1,163	1,128	1,243	1,276	1,139	815	780	
East Ayrshire	57,731	696	667	654	668	630	571	651	621	628	750	713	706	779	764	828	833	807	834	847	820	769	786	706	676	644	626	591	623	601	603	520	
East Dunbartonshire	50,494	440	502	527	564	581	571	582	599	657	729	649	728	697	768	771	758	817	788	740	665	691	657	721	627	615	583	582	561	516	389	438	
East Lothian	45,333	570	611	591	555	523	548	489	567	600	589	657	632	617	648	628	704	654	629	549	571	582	512	490	404	425	356	413	347	360	341	336	
East Renfrewshire	42,572	460	458	493	538	525	530	551	587	624	659	610	616	688	654	616	675	626	678	686	581	578	544	561	566	456	431	456	421	339	333	299	
Edinburgh, City of	225,926	2,495	2,448	2,241	2,232	2,177	2,109	2,051	2,152	2,167	2,177	2,282	2,282	2,301	2,256	2,449	2,500	2,522	2,575	3,003	3,472	3,770	4,183	4,500	4,389	4,658	5,015	4,987	5,050	4,607	4,081	3,953	
Eilean Siar	12,922	137	121	119	127	137	122	105	155	148	135	159	160	146	161	170	191	181	191	154	137	145	125	135	106	111	93	100	125	129	102	122	
Falkirk	72,981	965	889	922	867	866	822	833	882	867	915	972	863	903	920	997	962	1,061	1,007	985	1,044	981	849	842	725	730	913	944	924	833	868	845	
Fife	173,957	2,042	2,017	1,960	2,015	1,950	1,848	1,973	2,037	2,117	1,956	2,094	2,162	2,183	2,217	2,373	2,271	2,303	2,310	2,324	2,728	2,625	2,705	2,609	2,303	2,068	2,144	2,089	2,143	1,902	1,721	1,713	
Glasgow City	279,865	3,479	3,360	3,334	3,105	2,923	2,822	2,848	2,877	2,836	2,944	3,086	2,980	3,078	3,066	3,246	3,473	3,499	3,621	3,939	4,748	4,937	5,223	5,471	5,268	5,619	5,504	5,748	5,662	5,505	5,015	4,667	
Highland	106,453	1,168	1,176	1,158	1,140	1,127	1,110	1,212	1,157	1,339	1,340	1,355	1,282	1,354	1,371	1,365	1,464	1,476	1,415	1,310	1,237	1,178	1,182	1,190	1,120	954	1,005	1,221	1,117	1,174	1,011	1,012	
Inverclyde	38,686	458	421	476	438	426	384	415	440	453	497	501	478	484	459	505	569	567	542	555	572	552	595	562	516	501	459	508	487	428	420	392	
Midlothian	37,698	465	463	457	482	474	436	451	460	489	509	488	489	518	519	506	594	595	523	547	531	506	493	474	428	417	409	340	350	359	289	335	
Moray	43,725	498	486	436	419	431	429	462	516	513	547	542	553	573	586	587	639	641	607	624	528	572	531	570	516	452	451	438	495	459	427	396	
North Ayrshire	64,331	789	762	748	737	761	714	698	734	711	765	835	831	887	897	941	941	1,012	921	898	947	911	832	801	696	732	729	733	636	646	575	560	
North Lanarkshire	156,107	2,086	2,003	2,031	2,020	1,914	1,939	1,868	1,878	2,097	1,995	2,118	2,077	2,001	2,136	2,073	2,302	2,249	2,151	2,121	2,223	2,095	2,148	2,178	2,108	2,124	2,144	2,088	2,127	1,972	1,737	1,682	
Orkney Islands	9,779	112	95	99	93	87	85	76	91	136	115	143	144	131	127	105	147	149	151	131	107	94	90	109	85	91	86	99	87	94	86	70	
Perth & Kinross	69,135	690	656	727	747	714	729	756	796	802	867	841	782	827	930	923	975	955	879	897	880	893	902	885	950	863	772	800	707	712	670	617	
Renfrewshire	80,991	961	966	959	946	924	889	920	893	965	982	1,085	964	1,016	1,052	1,105	1,075	1,162	1,135	1,015	1,123	1,137	1,094	1,140	1,035	1,043	1,036	1,137	1,027	928	898	871	
Scottish Borders	53,998	566	595	608	606	590	596	621	614	648	586	694	710	683	669	725	717	723	707	639	620	514	539	514	454	440	409	489	480	449	447	471	
Shetland Islands	11,037	137	126	130	124	132	124	120	154	113	141	140	131	151	149	170	185	157	160	127	113	132	121	139	103	96	106	130	127	125	109	137	
South Ayrshire	53,299	535	501	527	537	519	566	556	601	603	617	618	617	630	650	697	703	704	742	683	666	661	665	667	641	569	539	583	499	563	445	394	
South Lanarkshire	148,052	1,822	1,744	1,731	1,751	1,599	1,683	1,629	1,791	1,797	1,802	1,925	1,895	1,851	2,005	2,013	2,117	2,134	2,065	1,918	2,097	1,982	2,002	2,089	1,949	1,841	1,848	1,905	1,903	1,696	1,550	1,494	
Stirling	42,065	482	443	494	525	494	461	487	502	584	562	573	561	561	583	571	592	581	684	698	912	741	699	606	629	527	475	465	367	405	281	308	
West Dunbartonshire	43,219	558	522	531	500	470	446	467	481	493	529	567	568	533	607	594	641	618	624	604	659	670	654	687	637	626	574	610	496	497	430	433	
West Lothian	81,429	1,169	1,116	1,142	1,091	969	986	1,019	1,058	1,189	1,077	1,051	1,136	1,145	1,123	1,216	1,147	1,165	1,092	1,109	1,088	1,069	1,073	1,013	986	863	920	995	985	965	893	958	
NHS Board areas																																	
Ayrshire & Arran	175,361	2,020	1,930	1,929	1,942	1,910	1,851	1,905	1,956	1,942	2,132	2,166	2,154	2,296	2,311	2,466	2,477	2,523	2,497	2,428	2,433	2,341	2,283	2,174	2,013	1,945	1,894	1,907	1,758	1,810	1,623	1,474	
Borders	53,998	566	595	608	606	590	596	621	614	648	586	694	710	683	669	725	717	723	707	639	620	514	539	514	454	440	409	489	480	449	447	471	
Dumfries & Galloway	71,791	799	747	744	702	715	683	737	741																								

Table 2 (continued)

FEMALES

Area	All Ages	Age																															
		0	1	2	3	4	5	6	7	8	9	10	11	12	13	14	15	16	17	18	19	20	21	22	23	24	25	26	27	28	29	30	
SCOTLAND	2,658,601	27,714	27,177	26,784	26,433	25,944	25,632	26,230	26,031	27,512	28,221	28,783	28,785	29,122	30,195	30,930	32,163	32,104	31,259	31,340	33,343	34,348	35,153	35,745	33,492	32,768	33,006	33,567	33,272	31,042	29,324	28,376	
Council areas																																	
Aberdeen City	106,057	1,172	1,033	1,082	931	968	961	937	886	973	907	937	924	998	1,041	1,074	1,059	1,193	1,201	1,443	1,870	1,978	1,974	1,889	1,725	1,933	1,832	1,642	1,731	1,497	1,380	1,322	
Aberdeenshire	120,676	1,305	1,314	1,298	1,284	1,282	1,287	1,302	1,314	1,445	1,366	1,452	1,448	1,517	1,589	1,566	1,671	1,614	1,505	1,383	1,233	1,198	1,158	1,141	1,037	928	945	1,053	1,058	1,070	1,117	1,149	
Angus	56,750	554	558	582	567	585	559	586	574	572	630	652	660	655	640	668	736	636	637	594	536	535	512	531	460	480	514	469	490	449	536	482	
Argyll & Bute	45,846	394	382	376	434	382	446	404	439	532	495	523	552	492	571	610	602	554	607	464	404	376	374	386	342	363	281	323	322	290	306	361	
Clackmannanshire	25,599	272	293	273	259	249	258	283	284	260	303	298	324	306	322	359	351	357	332	295	311	299	254	256	257	239	269	284	288	253	296	283	
Dumfries & Galloway	76,509	722	728	711	697	690	639	667	697	715	871	820	841	886	909	931	928	955	827	736	712	726	682	674	665	571	628	627	692	663	617	558	
Dundee City	74,739	784	737	758	700	668	660	656	647	655	713	762	723	655	717	803	827	893	922	1,064	1,394	1,487	1,484	1,411	1,204	1,061	1,141	1,178	1,086	1,080	797	708	
East Ayrshire	61,839	639	622	612	632	616	620	615	624	645	609	628	658	654	773	787	838	864	787	756	704	744	725	703	644	630	677	644	652	634	603	579	
East Dunbartonshire	54,356	441	488	466	480	532	524	559	549	623	638	637	655	665	691	689	768	716	670	621	568	556	612	638	564	582	494	444	454	426	391	416	
East Lothian	49,107	533	540	500	576	475	517	542	563	566	606	661	591	603	610	639	661	645	599	537	401	447	452	473	399	416	442	361	359	341	392	472	
East Renfrewshire	46,688	437	463	506	497	508	492	521	530	544	559	619	581	613	653	645	615	605	589	578	524	464	518	520	446	407	383	384	354	388	335	344	
Edinburgh, City of	242,144	2,381	2,197	2,107	2,063	1,988	1,967	1,973	2,002	2,117	2,121	1,936	2,174	2,113	2,190	2,194	2,332	2,331	2,564	2,853	3,664	4,220	4,655	5,182	5,034	4,978	5,156	5,099	5,116	4,422	4,033	3,715	
Eilean Siar	13,378	138	128	115	151	132	133	134	121	140	137	168	169	155	169	152	174	167	157	123	114	91	97	107	65	99	131	129	128	101	131		
Falkirk	77,739	883	880	863	851	827	743	853	777	867	869	855	846	917	876	924	925	1,000	914	833	911	793	800	919	765	887	906	918	900	975	914	861	
Fife	186,543	1,974	1,980	1,920	1,875	1,846	1,794	1,933	1,752	1,927	2,091	2,004	2,012	2,145	2,201	2,265	2,183	2,250	2,205	2,329	2,647	2,739	2,589	2,424	2,212	2,066	1,933	2,090	2,099	2,005	1,835	1,851	
Glasgow City	302,075	3,400	3,174	3,105	2,919	2,869	2,721	2,766	2,713	2,783	2,872	2,929	2,791	2,943	2,903	3,180	3,364	3,327	3,275	3,957	4,655	5,091	5,419	5,680	5,500	5,609	5,526	5,714	5,631	5,063	4,580	4,302	
Highland	110,987	1,088	1,130	1,097	1,120	1,091	1,074	1,108	1,070	1,158	1,240	1,213	1,319	1,278	1,315	1,393	1,409	1,376	1,225	1,105	942	908	922	962	917	906	1,045	1,142	1,120	1,110	1,037	1,009	
Inverclyde	42,394	403	409	423	417	400	379	399	398	448	413	468	482	474	510	463	525	514	552	476	537	508	551	552	472	476	474	453	484	404	392	367	
Midlothian	41,812	447	477	417	432	423	397	485	490	538	478	519	469	482	506	484	583	575	521	454	521	458	500	426	447	395	417	421	396	406	366	401	
Moray	43,145	453	418	439	408	403	351	438	426	459	504	529	541	511	540	576	595	542	565	494	433	420	377	418	388	366	354	328	331	400	354	395	
North Ayrshire	71,429	711	736	687	708	708	712	723	691	713	772	799	829	840	882	823	882	921	839	821	856	799	815	809	759	745	752	732	728	708	682	653	
North Lanarkshire	168,573	1,958	1,869	1,903	1,909	1,866	1,854	1,830	1,803	1,911	1,996	2,040	1,919	1,971	1,971	1,960	2,112	2,135	2,022	2,088	1,998	2,084	2,158	2,223	2,044	1,996	2,052	2,086	2,144	1,973	1,918	1,824	
Orkney Islands	10,081	86	103	100	81	97	108	81	100	96	88	114	106	137	155	142	145	140	135	95	84	84	84	87	85	66	78	93	86	111	94	84	
Perth & Kinross	73,005	690	660	682	683	696	672	788	713	751	783	856	814	832	857	905	854	897	757	750	709	767	844	833	819	677	694	687	643	604	604	642	
Renfrewshire	88,609	914	920	945	933	863	900	922	901	912	927	925	971	959	994	1,021	1,133	1,078	1,053	1,038	1,052	1,067	1,103	1,048	1,022	1,059	981	1,092	1,079	964	965	889	
Scottish Borders	57,432	582	531	565	569	575	607	546	636	574	629	635	678	682	661	713	696	711	689	551	536	526	498	496	470	469	440	456	433	461	432	460	
Shetland Islands	10,913	123	144	96	111	126	115	124	138	137	139	149	138	152	137	150	156	163	162	126	85	76	87	85	90	91	89	107	113	134	110	158	
South Ayrshire	58,391	522	496	556	515	492	522	516	500	583	619	622	618	608	687	649	705	672	713	622	630	639	622	622	629	484	540	591	480	515	530	496	
South Lanarkshire	161,448	1,665	1,765	1,654	1,682	1,648	1,653	1,638	1,709	1,789	1,723	1,864	1,773	1,809	1,974	1,948	2,021	1,956	1,866	1,799	1,822	1,820	1,883	1,965	1,928	1,765	1,767	1,918	1,858	1,698	1,751	1,566	
Stirling	46,125	439	453	454	462	464	417	499	491	516	513	556	529	558	542	561	633	582	646	764	935	805	689	626	525	483	488	461	477	412	393	464	
West Dunbartonshire	47,871	508	504	454	465	459	480	436	491	475	497	511	486	537	508	588	570	598	610	584	611	570	671	683	624	591	611	637	539	494	498	512	
West Lothian	86,341	1,096	1,045	1,038	1,062	1,016	1,070	966	1,002	1,088	1,113	1,102	1,104	1,035	1,101	1,068	1,110	1,137	1,113	1,007	944	1,073	1,044	986	912	984	998	1,002	1,000	964	965	922	
NHS Board areas																																	
Ayrshire & Arran	191,659	1,872	1,854	1,855	1,855	1,816	1,854	1,854	1,815	1,941	2,000	2,049	2,105	2,102	2,342	2,259	2,425	2,457	2,339	2,199	2,190	2,182	2,162	2,134	2,032	1,859	1,969	1,967	1,860	1,857	1,815	1,728	
Borders	57,432	582	531	565	569	575	607	546	636	574	629	635	678	682	661	713	696	711	689	551	536	526	498	496	470	469	440	456	433	461	432	460	
Dumfries & Galloway	76,509	722	728	711	697	690	639	667	697	715	871	820	841	886	909	931	928	955	827	736	712	726	682	674	665	571	628	627	692	663	617	558	
Fife	186,505	1,974	1,980	1,920	1,875	1,846	1,795	1,932	1,751	1,927	2,091	2,003	2,011	2,145	2,200	2,265	2,183	2,250	2,204	2,327	2,647	2,740	2,589	2,421	2,211	2,068	1,933	2,090	2,098	2,005	1,835	1,851	
Forth Valley	149,302	1,595	1,624	1,590	1,531	1,538	1,418	1,635	1,551	1,644	1,681	1,703	1,699	1,779	1,738	1,842	1,907	1,937	1,890	1,895	2,155	1,897	1,741	1,808	1,543	1,612	1,662	1,660	1,665	1,639	1,603	1,605	
Grampian	269,878	2,930	2,765	2,819	2,623	2,653	2,599	2,677	2,626	2,877	2,777	2,918	2,913	3,026	3,170	3,216	3,325	3,349	3,271	3,320	3,536	3,596	3,509	3,448	3,150	3,227	3,131	3,023	3,120	2,967	2,851		

Table 2 (continued)

PERSONS (continued)

Area	Age																														
	31	32	33	34	35	36	37	38	39	40	41	42	43	44	45	46	47	48	49	50	51	52	53	54	55	56	57	58	59	60	
SCOTLAND	60,014	60,793	61,864	66,076	70,414	74,659	74,138	77,229	78,848	80,562	79,619	82,024	82,001	81,262	80,095	78,699	76,702	75,895	74,061	72,351	70,362	67,810	67,056	65,760	63,587	64,847	65,466	67,529	69,613	75,487	
Council areas																															
Aberdeen City	2,916	2,872	2,911	2,968	3,010	3,038	2,991	3,083	2,947	3,111	2,972	3,137	3,125	3,086	3,046	2,916	3,153	3,082	2,960	2,852	2,844	2,793	2,710	2,514	2,524	2,501	2,518	2,646	2,634	2,837	
Aberdeenshire	2,351	2,470	2,841	3,080	3,206	3,747	3,597	3,922	3,823	4,031	4,006	4,074	4,117	4,034	3,880	3,908	3,727	3,787	3,809	3,690	3,654	3,591	3,664	3,391	3,319	3,452	3,416	3,571	3,648	3,846	
Angus	1,025	1,062	1,153	1,378	1,462	1,494	1,414	1,571	1,531	1,687	1,635	1,771	1,775	1,724	1,822	1,646	1,767	1,628	1,562	1,563	1,559	1,472	1,530	1,598	1,471	1,534	1,604	1,677	1,755	1,989	
Argyll & Bute	853	894	879	1,054	1,129	1,117	1,276	1,275	1,378	1,408	1,350	1,467	1,426	1,414	1,377	1,421	1,401	1,357	1,351	1,346	1,370	1,239	1,287	1,219	1,225	1,394	1,316	1,413	1,423	1,747	
Clackmannanshire	569	576	599	663	720	652	739	844	774	894	795	827	835	833	777	783	753	757	686	683	653	715	686	639	612	666	694	731	741	802	
Dumfries & Galloway	1,341	1,304	1,418	1,512	1,743	1,885	1,873	2,064	2,030	2,172	2,258	2,356	2,336	2,425	2,374	2,294	2,208	2,172	2,186	2,119	2,147	2,079	2,084	2,045	2,056	2,149	2,293	2,326	2,419	2,649	
Dundee City	1,493	1,509	1,491	1,576	1,612	1,850	1,712	1,850	1,747	1,832	1,933	2,008	1,993	2,089	2,021	2,032	2,001	1,879	1,944	1,891	1,716	1,728	1,612	1,629	1,629	1,574	1,646	1,743	1,771	2,039	
East Ayrshire	1,346	1,364	1,302	1,481	1,678	1,745	1,734	1,912	1,898	1,990	1,895	2,062	1,908	1,890	1,822	1,819	1,725	1,808	1,693	1,745	1,571	1,542	1,544	1,608	1,473	1,581	1,690	1,665	1,772	1,926	
East Dunbartonshire	784	758	901	1,013	1,170	1,218	1,335	1,418	1,471	1,589	1,550	1,718	1,744	1,813	1,820	1,779	1,710	1,817	1,696	1,771	1,596	1,549	1,489	1,498	1,355	1,417	1,462	1,475	1,491	1,661	
East Lothian	895	1,073	1,017	1,191	1,245	1,484	1,452	1,549	1,561	1,666	1,473	1,638	1,624	1,614	1,509	1,533	1,467	1,458	1,411	1,439	1,345	1,272	1,267	1,236	1,156	1,244	1,214	1,195	1,376	1,397	
East Renfrewshire	715	656	848	854	967	1,130	1,172	1,257	1,311	1,407	1,459	1,471	1,572	1,570	1,551	1,497	1,527	1,542	1,434	1,414	1,373	1,334	1,202	1,151	1,185	1,081	1,143	1,183	1,224	1,330	
Edinburgh, City of	7,556	7,563	7,145	7,160	7,061	7,388	6,927	6,813	7,105	7,070	6,807	6,912	6,691	6,874	6,606	6,570	6,299	6,164	6,040	6,054	5,581	5,340	5,234	5,104	5,016	5,115	5,167	5,286	5,220	5,895	
Eilean Siar	309	254	248	314	354	307	335	407	417	398	372	391	408	396	414	382	406	375	382	403	361	391	343	389	386	358	417	409	403	460	
Falkirk	1,829	1,928	2,045	2,084	2,295	2,365	2,308	2,416	2,557	2,553	2,437	2,517	2,474	2,418	2,397	2,306	2,251	2,129	2,136	2,067	1,989	1,877	1,878	1,878	1,842	2,000	2,021	2,042	2,240	2,240	
Fife	3,940	3,873	4,048	4,409	4,837	5,125	5,193	5,483	5,602	5,652	5,539	5,623	5,635	5,556	5,522	5,425	5,303	5,229	5,135	4,936	4,884	4,700	4,713	4,530	4,480	4,602	4,677	4,978	5,180	5,722	
Glasgow City	9,199	8,887	8,445	8,740	8,955	9,169	8,590	8,836	8,741	8,565	8,798	8,778	9,014	8,768	8,764	8,514	8,175	8,088	7,544	7,497	7,408	6,999	6,563	6,384	5,903	5,779	5,713	5,752	6,004	6,174	
Inverclyde	2,283	2,322	2,323	2,576	2,781	2,897	2,960	2,981	3,229	3,362	3,389	3,584	3,618	3,481	3,355	3,495	3,426	3,347	3,352	3,268	3,227	3,199	3,228	3,243	3,189	3,205	3,212	3,361	3,514	3,491	
Inverclyde	772	857	813	978	1,014	1,025	1,068	1,109	1,226	1,262	1,255	1,253	1,346	1,402	1,407	1,288	1,256	1,175	1,224	1,159	1,087	1,054	1,030	1,024	1,152	1,060	1,061	1,102	1,155	1,155	
Midlothian	784	836	876	911	1,023	1,160	1,228	1,192	1,305	1,254	1,260	1,272	1,253	1,354	1,242	1,228	1,283	1,247	1,200	1,157	1,117	1,069	1,069	1,084	1,039	1,057	1,090	1,175	1,153	1,298	
Moray	922	903	981	1,112	1,221	1,344	1,306	1,397	1,363	1,441	1,413	1,397	1,364	1,460	1,369	1,351	1,280	1,250	1,274	1,202	1,248	1,143	1,182	1,186	1,078	1,204	1,231	1,171	1,262	1,401	
North Ayrshire	1,443	1,335	1,562	1,508	1,672	1,859	1,944	1,920	2,013	2,108	2,050	2,142	2,180	2,124	2,103	1,972	1,956	2,032	1,963	1,941	1,903	1,814	1,804	1,836	1,790	1,800	1,860	1,946	2,064	2,265	
North Lanarkshire	4,104	4,018	4,138	4,412	4,773	4,874	5,169	5,242	5,266	5,321	5,305	5,407	5,185	5,072	5,215	4,929	4,766	4,680	4,676	4,612	4,384	4,208	4,243	4,184	3,845	3,807	4,002	3,986	4,161	4,301	
Orkney Islands	195	210	180	219	226	276	299	245	313	352	334	315	330	331	314	311	309	299	278	320	302	277	285	305	286	293	273	311	310	337	
Perth & Kinross	1,251	1,334	1,549	1,560	1,743	1,807	1,783	1,956	2,125	2,123	2,218	2,260	2,293	2,272	2,176	2,167	1,962	2,151	2,052	1,998	1,925	1,957	1,949	2,039	1,874	1,935	2,062	2,064	2,197	2,371	
Renfrewshire	1,661	1,831	1,936	2,031	2,229	2,406	2,537	2,606	2,739	2,777	2,827	2,900	2,873	2,726	2,937	2,889	2,588	2,619	2,576	2,365	2,338	2,169	2,284	2,167	2,056	2,276	2,149	2,259	2,207	2,528	
Scottish Borders	993	1,134	1,083	1,243	1,478	1,533	1,590	1,680	1,755	1,827	1,823	1,804	1,814	1,897	1,748	1,776	1,755	1,762	1,689	1,617	1,577	1,534	1,557	1,556	1,507	1,577	1,587	1,654	1,767	2,018	
Shetland Islands	249	293	245	311	316	309	306	312	324	314	358	318	385	351	371	347	322	300	316	281	312	333	304	309	300	305	321	310	310	342	
South Ayrshire	930	1,083	1,100	1,214	1,399	1,453	1,451	1,406	1,593	1,583	1,606	1,763	1,750	1,647	1,797	1,757	1,671	1,675	1,733	1,639	1,611	1,578	1,560	1,574	1,570	1,552	1,570	1,698	1,662	1,894	
South Lanarkshire	3,422	3,588	3,651	3,991	4,223	4,525	4,547	4,869	4,890	4,942	4,815	4,939	5,193	4,992	4,929	4,848	4,907	4,771	4,711	4,592	4,463	4,312	4,273	4,099	4,038	3,834	3,858	4,024	4,111	4,461	
Stirling	723	851	838	1,012	1,130	1,271	1,310	1,283	1,362	1,311	1,415	1,418	1,440	1,378	1,341	1,370	1,319	1,251	1,219	1,150	1,118	1,094	1,149	1,122	1,115	1,149	1,121	1,146	1,223	1,395	
West Dunbartonshire	1,021	1,040	1,026	1,076	1,125	1,276	1,263	1,375	1,443	1,441	1,429	1,470	1,498	1,489	1,357	1,461	1,425	1,371	1,398	1,258	1,348	1,300	1,230	1,136	1,186	1,155	1,098	1,155	1,254	1,251	
West Lothian	2,140	2,115	2,272	2,445	2,617	2,930	2,729	2,956	3,009	3,119	2,843	3,032	2,802	2,782	2,732	2,686	2,572	2,612	2,480	2,257	2,269	2,115	2,079	2,077	2,058	2,089	2,002	2,137	2,213	2,265	
NHS Board areas																															
Ayrshire & Arran	3,719	3,782	3,964	4,203	4,749	5,057	5,129	5,238	5,504	5,681	5,551	5,967	5,838	5,661	5,722	5,548	5,352	5,515	5,389	5,325	5,085	4,934	4,908	5,018	4,833	4,933	5,120	5,309	5,498	6,085	
Borders	993	1,134	1,083	1,243	1,478	1,533	1,590	1,680	1,755	1,827	1,823	1,804	1,814	1,897	1,748	1,776	1,755	1,762	1,689	1,617	1,577	1,534	1,557	1,556	1,507	1,577	1,587	1,654	1,767	2,018	
Dumfries & Galloway	1,341	1,304	1,418	1,512	1,743	1,885	1,873	2,064	2,030	2,172	2,258	2,356	2,336	2,425	2,374	2,294	2,208	2,172	2,186	2,119	2,147	2,079	2,084	2,045	2,056	2,149	2,293	2,326	2,419	2,649	
Fife	3,940	3,873	4,048	4,409	4,839	5,122	5,193	5,481	5,600	5,649	5,537	5,621	5,636	5,553	5,519	5,424	5,303	5,228	5,134	4,935	4,894	4,700	4,710	4,529	4,479	4,612	4,674	4,977	5,179	5,719	
Forth Valley	3,118	3,347	3,480	3,761	4,136	4,284	4,349	4,538	4,687	4,																					

Table 2 (continued)

MALES (continued)

Area	Age																													
	31	32	33	34	35	36	37	38	39	40	41	42	43	44	45	46	47	48	49	50	51	52	53	54	55	56	57	58	59	60
SCOTLAND	29,555	29,500	30,130	31,892	33,576	35,901	35,545	37,139	37,683	39,074	38,085	39,483	39,217	38,799	39,028	38,028	37,275	36,722	35,851	35,162	34,492	33,240	32,896	32,292	31,199	31,749	32,206	33,176	34,118	36,858
Council areas																														
Aberdeen City	1,574	1,520	1,556	1,578	1,551	1,542	1,460	1,581	1,509	1,648	1,454	1,509	1,555	1,552	1,487	1,420	1,575	1,502	1,478	1,449	1,451	1,431	1,420	1,295	1,272	1,284	1,297	1,300	1,340	1,412
Aberdeenshire	1,112	1,174	1,295	1,454	1,463	1,770	1,743	1,911	1,858	2,015	1,963	1,996	2,004	1,986	1,988	1,949	1,837	1,898	1,966	1,840	1,837	1,794	1,832	1,668	1,669	1,762	1,737	1,847	1,899	1,909
Angus	519	496	549	651	708	687	677	746	719	799	763	848	880	837	919	768	857	789	764	732	761	708	744	801	712	761	821	772	876	944
Argyll & Bute	432	455	448	551	579	561	607	642	713	723	673	694	699	710	707	729	687	660	666	686	704	622	641	622	582	667	642	701	667	804
Clackmannanshire	288	292	282	297	349	319	361	428	372	426	376	400	420	414	375	386	390	390	301	340	300	358	326	316	302	294	343	369	369	388
Dumfries & Galloway	639	603	670	682	858	916	907	957	926	1,061	1,095	1,164	1,120	1,183	1,130	1,117	1,035	1,031	1,065	1,004	1,029	1,016	1,046	979	1,009	1,076	1,150	1,166	1,236	1,310
Dundee City	701	717	703	733	748	877	790	843	778	822	894	931	936	946	908	891	941	899	924	905	842	856	816	752	807	779	744	893	838	980
East Ayrshire	654	691	634	720	816	842	819	926	868	959	933	988	921	899	875	879	770	899	807	834	768	752	766	799	708	804	862	808	852	925
East Dunbartonshire	349	322	420	447	508	546	642	644	685	711	693	835	777	842	855	844	797	874	822	829	784	757	699	724	646	696	699	685	737	814
East Lothian	391	518	458	580	555	695	677	742	722	775	716	820	734	763	755	740	699	718	684	720	678	602	654	605	557	581	573	557	655	690
East Renfrewshire	321	277	391	352	461	489	543	584	546	633	692	651	726	738	735	733	715	788	697	695	695	629	562	567	583	505	568	561	581	625
Edinburgh, City of	3,848	3,789	3,637	3,615	3,437	3,714	3,484	3,377	3,553	3,516	3,286	3,414	3,194	3,282	3,189	3,237	3,045	2,989	2,936	2,901	2,848	2,682	2,616	2,530	2,519	2,468	2,479	2,563	2,585	2,854
Eilean Siar	147	134	123	153	185	160	152	203	206	210	176	201	204	197	210	192	208	210	197	212	172	192	181	216	191	181	212	214	226	232
Falkirk	883	913	1,024	982	1,092	1,120	1,105	1,164	1,210	1,249	1,171	1,264	1,206	1,148	1,167	1,122	1,141	1,028	1,092	1,000	960	887	914	909	874	935	990	987	991	1,122
Fife	1,901	1,831	1,988	2,153	2,344	2,431	2,541	2,631	2,696	2,813	2,657	2,690	2,733	2,631	2,678	2,697	2,653	2,548	2,463	2,450	2,380	2,287	2,327	2,229	2,183	2,231	2,249	2,379	2,491	2,824
Glasgow City	4,704	4,517	4,257	4,389	4,463	4,578	4,199	4,288	4,137	4,203	4,178	4,146	4,165	4,243	4,215	3,987	3,956	3,869	3,526	3,681	3,515	3,537	3,208	3,208	2,876	2,896	2,829	2,866	2,990	3,004
Highland	1,148	1,159	1,096	1,242	1,332	1,374	1,367	1,358	1,571	1,621	1,653	1,705	1,737	1,716	1,696	1,665	1,713	1,612	1,629	1,616	1,601	1,568	1,642	1,573	1,573	1,594	1,597	1,713	1,756	1,756
Inverclyde	373	399	375	468	485	493	486	492	535	602	564	614	623	681	696	636	593	576	584	603	574	534	499	508	498	568	526	523	519	561
Midlothian	343	369	398	421	459	530	604	539	593	605	562	584	577	586	585	570	614	580	555	518	559	509	518	524	507	485	536	570	555	602
Moray	489	439	534	580	616	670	682	738	729	715	734	697	708	745	695	698	664	640	649	578	633	558	569	593	542	591	608	582	623	657
North Ayrshire	673	565	778	695	735	824	936	899	927	957	934	1,007	1,022	926	1,021	943	917	956	901	919	909	884	854	848	882	886	908	926	989	1,087
North Lanarkshire	1,959	1,962	2,001	2,112	2,184	2,328	2,462	2,498	2,486	2,586	2,553	2,594	2,522	2,332	2,574	2,364	2,237	2,224	2,185	2,261	2,101	2,008	2,032	2,045	1,857	1,829	1,957	1,920	1,965	2,113
Orkney Islands	103	91	81	113	99	110	153	129	164	191	167	147	170	180	166	158	148	145	145	151	144	139	155	145	140	145	131	178	146	180
Perth & Kinross	640	657	732	731	809	802	833	919	978	1,016	1,096	1,072	1,156	1,102	1,064	1,050	972	1,065	1,005	957	907	967	934	989	888	935	1,031	1,011	1,107	1,160
Renfrewshire	846	867	885	940	979	1,119	1,158	1,245	1,305	1,273	1,314	1,414	1,386	1,296	1,427	1,318	1,253	1,270	1,231	1,155	1,149	1,023	1,092	1,052	999	1,064	1,053	1,075	1,070	1,263
Scottish Borders	454	543	490	566	718	716	775	833	880	884	906	901	850	911	885	880	840	826	822	786	763	794	769	761	761	779	791	806	860	990
Shetland Islands	136	147	103	163	153	155	153	151	155	166	186	166	186	193	189	175	163	149	153	134	167	157	168	148	164	155	169	166	181	199
South Ayrshire	461	508	554	590	673	707	658	671	763	779	734	863	832	732	881	844	826	798	805	773	785	779	748	766	766	750	764	858	807	926
South Lanarkshire	1,617	1,688	1,715	1,861	1,963	2,146	2,178	2,343	2,346	2,332	2,295	2,320	2,392	2,347	2,352	2,361	2,388	2,244	2,359	2,141	2,145	2,025	2,068	2,014	1,968	1,913	1,874	1,977	1,941	2,150
Stirling	311	390	401	444	511	598	580	558	630	607	653	677	708	629	657	667	663	648	602	578	554	527	525	547	563	568	560	579	594	677
West Dunbartonshire	484	503	499	501	518	617	570	643	690	677	643	719	697	698	628	689	719	644	676	590	648	615	572	570	588	550	529	573	574	602
West Lothian	1,055	964	1,053	1,128	1,225	1,465	1,243	1,456	1,433	1,500	1,371	1,452	1,377	1,354	1,319	1,329	1,259	1,253	1,162	1,124	1,129	1,043	999	989	1,013	1,017	977	1,051	1,098	1,098
NHS Board areas																														
Ayrshire & Arran	1,788	1,764	1,966	2,005	2,224	2,373	2,413	2,496	2,558	2,695	2,601	2,858	2,775	2,557	2,777	2,666	2,513	2,653	2,513	2,526	2,462	2,415	2,368	2,413	2,356	2,440	2,534	2,592	2,648	2,938
Borders	454	543	490	566	718	716	775	833	880	884	906	901	850	911	885	880	840	826	822	786	763	794	769	761	761	779	791	806	860	990
Dumfries & Galloway	639	603	670	682	858	916	907	957	926	1,061	1,095	1,164	1,120	1,183	1,130	1,117	1,035	1,031	1,065	1,004	1,029	1,016	1,046	979	1,009	1,076	1,150	1,166	1,236	1,310
Fife	1,901	1,831	1,988	2,153	2,346	2,429	2,541	2,631	2,696	2,812	2,657	2,690	2,733	2,628	2,677	2,696	2,653	2,547	2,463	2,450	2,380	2,287	2,326	2,228	2,182	2,231	2,247	2,379	2,490	2,824
Forth Valley	1,479	1,590	1,705	1,722	1,947	2,035	2,043	2,151	2,206	2,282	2,196	2,339	2,330	2,193	2,189	2,164	2,193	2,066	1,994	1,917	1,812	1,771	1,764	1,736	1,794	1,890	1,932	1,948	2,187	
Grampian	3,175	3,133	3,385	3,612	3,630	3,982	3,885	4,230	4,096	4,378	4,151	4,202	4,267	4,283	4,170	4,067	4,076	4,040	4,093	3,867	3,921	3,783	3,821	3,556	3,483	3,637	3,642	3,729	3,862	3,978
Greater Glasgow	7,479	7,329	7,259	7,587	7,917	8,347	8,134	8,498	8,508	8,636	8,598	8,897	8,910	9,041	9,114	8,708	8,563	8,600	8,107	8,061	7,851	7,595	7,139	7,137	6,678	6,721	6,679	6,723	6,952	7,364
Highland	1,580	1,614	1,544	1,793	1,911	1,935	1,974	2,000	2,284	2,344	2,326	2,399	2,436	2,426	2,403	2,394	2,400	2,272	2,295	2,302	2,305	2,190	2,283	2,195	2,155	2,261	2,239	2,414	2,423	2,560
L																														

Table 2 (continued)

FEMALES (continued)

Area	Age																														
	31	32	33	34	35	36	37	38	39	40	41	42	43	44	45	46	47	48	49	50	51	52	53	54	55	56	57	58	59	60	
SCOTLAND	30,459	31,293	31,734	34,184	36,838	38,758	38,593	40,090	41,165	41,488	41,534	42,541	42,784	42,463	41,067	40,671	39,427	39,173	38,210	37,189	35,870	34,570	34,160	33,468	32,388	33,098	33,260	34,353	35,495	36,629	
Council areas																															
Aberdeen City	1,342	1,352	1,355	1,390	1,459	1,496	1,531	1,502	1,438	1,463	1,518	1,628	1,570	1,534	1,559	1,496	1,578	1,580	1,482	1,403	1,393	1,362	1,290	1,219	1,252	1,217	1,221	1,346	1,294	1,425	
Aberdeenshire	1,239	1,296	1,546	1,626	1,743	1,977	1,854	2,011	1,965	2,016	2,043	2,078	2,113	2,048	1,892	1,959	1,890	1,889	1,843	1,850	1,817	1,797	1,832	1,650	1,690	1,679	1,724	1,749	1,937		
Angus	506	566	604	727	754	807	737	825	812	888	872	923	895	887	903	878	910	839	798	831	798	764	786	797	759	773	783	905	879	1,045	
Argyll & Bute	421	439	431	503	550	556	669	633	665	685	677	773	727	704	670	692	714	697	685	660	666	617	646	597	643	727	674	712	756	943	
Clackmannanshire	281	284	317	366	371	333	378	416	402	468	419	427	415	419	402	397	363	367	385	343	353	357	360	323	310	372	351	362	372	414	
Dumfries & Galloway	702	701	748	830	885	969	966	1,107	1,104	1,111	1,163	1,192	1,216	1,242	1,244	1,177	1,173	1,141	1,121	1,115	1,118	1,063	1,038	1,066	1,047	1,073	1,143	1,160	1,183	1,339	
Dundee City	792	792	788	843	864	973	922	1,007	969	1,010	1,039	1,077	1,057	1,143	1,113	1,141	1,060	980	1,020	986	874	872	796	877	822	795	902	850	933	1,059	
East Ayrshire	692	673	668	761	862	903	915	986	1,030	1,031	962	1,074	987	991	947	940	955	909	886	911	803	790	778	809	765	777	828	857	920	1,001	
East Dunbartonshire	435	436	481	566	662	672	693	774	786	878	857	883	967	971	965	935	913	943	874	942	812	792	790	774	709	721	763	790	754	847	
East Lothian	504	555	559	611	690	789	775	807	839	891	757	818	890	851	754	793	768	740	727	719	667	670	613	631	599	663	641	638	721	707	
East Renfrewshire	394	379	457	502	506	641	629	673	765	774	767	820	846	832	816	794	812	754	737	719	678	705	640	584	602	576	575	622	643	705	
Edinburgh, City of	3,708	3,774	3,508	3,545	3,624	3,674	3,443	3,436	3,552	3,554	3,521	3,498	3,497	3,592	3,417	3,333	3,254	3,175	3,104	3,153	2,733	2,658	2,618	2,574	2,497	2,647	2,688	2,723	2,635	3,041	
Eilean Siar	162	120	125	161	169	147	183	204	211	188	196	190	204	199	204	190	198	165	185	191	189	199	162	173	195	177	205	195	177	228	
Falkirk	946	1,015	1,021	1,102	1,203	1,245	1,203	1,252	1,347	1,304	1,266	1,253	1,268	1,270	1,230	1,184	1,110	1,101	1,044	1,067	1,029	990	964	969	968	1,065	1,010	1,034	1,051	1,118	
Fife	2,039	2,042	2,060	2,256	2,493	2,694	2,652	2,852	2,906	2,839	2,882	2,933	2,902	2,925	2,844	2,728	2,650	2,681	2,672	2,486	2,514	2,413	2,386	2,301	2,297	2,381	2,428	2,599	2,689	2,898	
Glasgow City	4,495	4,370	4,188	4,351	4,492	4,591	4,391	4,548	4,604	4,362	4,620	4,632	4,849	4,525	4,549	4,527	4,219	4,219	4,018	3,816	3,893	3,462	3,355	3,176	3,027	2,883	2,884	2,886	3,014	3,170	
Highland	1,135	1,163	1,227	1,334	1,449	1,523	1,593	1,623	1,658	1,741	1,736	1,879	1,881	1,765	1,659	1,830	1,713	1,735	1,652	1,626	1,631	1,586	1,670	1,616	1,611	1,611	1,615	1,648	1,758	1,735	
Inverclyde	399	458	438	510	529	532	582	617	691	660	691	639	723	721	711	651	695	680	591	621	585	553	555	522	526	584	534	538	583	594	
Midlothian	441	467	478	490	564	630	624	653	712	649	698	688	676	768	657	658	669	667	645	639	558	560	551	560	532	572	554	605	598	696	
Moray	433	464	447	532	605	674	624	659	634	726	679	700	656	715	674	653	616	610	625	624	615	585	613	593	536	613	623	589	639	744	
North Ayrshire	770	770	784	813	937	1,035	1,008	1,021	1,086	1,151	1,116	1,135	1,158	1,198	1,082	1,029	1,039	1,076	1,062	1,022	994	930	950	988	908	914	952	1,020	1,075	1,178	
North Lanarkshire	2,145	2,056	2,137	2,300	2,589	2,546	2,707	2,744	2,780	2,735	2,752	2,813	2,663	2,740	2,641	2,565	2,529	2,456	2,491	2,351	2,283	2,200	2,211	2,139	1,988	1,978	2,045	2,066	2,196	2,188	
Orkney Islands	92	119	99	106	127	166	146	116	149	161	167	168	160	151	148	153	161	154	133	169	158	138	130	160	146	148	142	133	164	157	
Perth & Kinross	611	677	817	829	934	1,005	950	1,037	1,147	1,107	1,122	1,188	1,137	1,170	1,112	1,117	990	1,086	1,047	1,041	1,018	990	1,015	1,050	986	1,000	1,031	1,053	1,090	1,211	
Renfrewshire	815	964	1,051	1,091	1,250	1,287	1,379	1,361	1,434	1,504	1,513	1,486	1,487	1,430	1,510	1,571	1,335	1,349	1,345	1,210	1,189	1,146	1,192	1,115	1,057	1,212	1,096	1,184	1,137	1,265	
Scottish Borders	539	591	593	677	760	817	815	847	875	943	917	903	964	986	863	896	915	936	867	831	814	740	788	795	746	798	796	848	907	1,028	
Shetland Islands	113	146	142	148	163	154	153	161	169	148	172	152	199	158	182	172	159	151	163	147	145	176	136	161	136	150	152	144	129	143	
South Ayrshire	469	575	546	624	726	746	793	735	830	804	872	900	918	915	916	913	845	877	928	866	826	799	812	808	804	802	806	840	855	968	
South Lanarkshire	1,805	1,900	1,936	2,130	2,260	2,379	2,369	2,526	2,544	2,610	2,520	2,619	2,801	2,645	2,577	2,487	2,519	2,527	2,352	2,451	2,318	2,287	2,205	2,085	2,070	1,921	1,984	2,047	2,170	2,311	
Stirling	412	461	437	568	619	673	730	725	732	704	762	741	732	749	684	713	656	603	617	572	564	567	624	575	552	581	561	567	629	718	
West Dunbartonshire	537	537	527	575	607	659	693	732	753	764	786	751	801	791	729	772	706	727	722	668	700	685	658	566	598	605	569	582	680	649	
West Lothian	1,085	1,151	1,219	1,317	1,392	1,465	1,486	1,500	1,576	1,619	1,472	1,580	1,425	1,428	1,413	1,357	1,313	1,359	1,318	1,133	1,140	1,072	1,080	1,088	1,045	1,072	1,025	1,086	1,115	1,167	
NHS Board areas																															
Ayrshire & Arran	1,931	2,018	1,998	2,198	2,525	2,684	2,716	2,742	2,946	2,986	2,950	3,109	3,063	3,104	2,945	2,882	2,839	2,862	2,876	2,799	2,623	2,519	2,540	2,605	2,477	2,493	2,586	2,717	2,850	3,147	
Borders	539	591	593	677	760	817	815	847	875	943	917	903	964	986	863	896	915	936	867	831	814	740	788	795	746	798	796	848	907	1,028	
Dumfries & Galloway	702	701	748	830	885	969	966	1,107	1,104	1,111	1,163	1,192	1,216	1,242	1,244	1,177	1,173	1,141	1,121	1,115	1,118	1,063	1,038	1,066	1,047	1,073	1,143	1,160	1,183	1,339	
Fife	2,039	2,042	2,060	2,256	2,493	2,693	2,652	2,850	2,904	2,837	2,880	2,931	2,903	2,925	2,842	2,728	2,650	2,681	2,671	2,485	2,514	2,413	2,384	2,301	2,297	2,381	2,427	2,598	2,689	2,895	
Forth Valley	1,639	1,757	1,775	2,039	2,189	2,249	2,306	2,387	2,481	2,475	2,443	2,417	2,414	2,437	2,317	2,294	2,126	2,065	2,047	1,975	1,943	1,911	1,943	1,864	1,828	2,014	1,919	1,962	2,048	2,249	
Grampian	3,014	3,112	3,348	3,548	3,807	4,147	4,009	4,172	4,037	4,205	4,240	4,406	4,339	4,297	4,125	4,108	4,084	4,079	3,950	3,877	3,825	3,744	3,735	3,535	3,438	3,520	3,523	3,659	3,682	4,106	
Greater Glasgow	7,564	7,682	7,653	8,162	8,650	9,014	8,966	9,321	9,630	9,562	9,865	9,868	10,311	9,909	9,875	9,836	9,249	9,279	8,870	8,598	8,432	7,897	7,738	7,249	7,019	7,021	6,881	7,126	7,349	7,745	
Highland	1,556	1,602	1,658	1,837	1,																										

Table 2 (continued)

PERSONS (continued)

Area	Age																													
	61	62	63	64	65	66	67	68	69	70	71	72	73	74	75	76	77	78	79	80	81	82	83	84	85	86	87	88	89	90+
SCOTLAND	58,063	55,537	56,735	55,171	51,067	47,935	49,342	48,473	47,448	45,691	44,734	43,051	40,660	38,975	38,647	36,686	34,649	32,422	28,976	27,496	26,479	23,712	21,916	18,984	17,864	16,507	15,509	9,397	7,188	31,805
Council areas																														
Aberdeen City	2,102	1,769	1,869	1,904	1,813	1,661	1,784	1,685	1,726	1,669	1,638	1,586	1,611	1,532	1,593	1,445	1,387	1,313	1,140	1,156	1,040	967	884	746	689	709	667	327	272	1,230
Aberdeenshire	3,042	2,736	2,754	2,645	2,472	2,137	2,329	2,204	2,128	1,980	1,989	1,850	1,777	1,670	1,577	1,525	1,459	1,388	1,265	1,155	1,086	1,085	1,017	825	808	674	720	388	333	1,517
Angus	1,413	1,383	1,421	1,375	1,292	1,189	1,238	1,136	1,139	1,159	1,109	1,071	995	893	955	968	855	783	761	684	690	586	565	506	455	367	379	247	171	879
Argyll & Bute	1,275	1,254	1,278	1,189	1,186	1,102	1,177	1,095	1,002	1,022	960	920	853	848	836	755	710	704	635	563	555	524	455	406	366	367	343	230	113	777
Clackmannanshire	597	597	600	563	503	463	448	453	456	486	414	384	346	352	351	292	326	271	256	219	219	175	198	164	166	158	119	86	57	205
Dumfries & Galloway	2,070	2,041	2,101	2,081	1,963	1,844	1,850	1,788	1,706	1,756	1,649	1,508	1,489	1,489	1,387	1,321	1,294	1,211	1,056	1,068	947	892	743	715	628	559	503	313	278	1,131
Dundee City	1,486	1,498	1,403	1,404	1,342	1,331	1,394	1,385	1,424	1,292	1,327	1,214	1,231	1,180	1,204	1,160	1,080	1,026	919	831	853	858	779	648	637	549	522	285	197	1,021
East Ayrshire	1,429	1,442	1,417	1,370	1,277	1,224	1,240	1,187	1,172	1,145	1,069	1,063	1,007	993	930	882	784	714	690	595	624	532	453	434	398	371	346	224	164	675
East Dunbartonshire	1,286	1,286	1,252	1,195	1,100	1,060	1,086	1,104	1,074	1,080	974	992	947	885	863	800	774	727	672	627	563	507	475	421	399	329	311	195	164	584
East Lothian	1,107	1,071	1,149	1,031	1,018	961	912	888	996	833	833	828	810	741	762	703	673	667	574	563	577	472	412	403	371	360	329	158	143	677
East Renfrewshire	992	962	978	951	830	857	830	826	894	806	820	764	756	702	735	678	630	601	542	524	540	416	424	345	372	303	282	178	168	533
Edinburgh, City of	4,214	3,943	3,955	3,862	3,501	3,367	3,543	3,467	3,550	3,404	3,459	3,279	3,168	3,182	3,078	3,087	2,882	2,689	2,526	2,440	2,284	2,074	1,999	1,788	1,738	1,621	1,503	940	662	3,141
Eilean Siar	365	325	339	342	299	333	318	301	299	286	268	273	260	255	246	206	210	222	180	172	173	154	156	132	140	110	118	62	44	221
Falkirk	1,652	1,637	1,639	1,664	1,476	1,457	1,414	1,530	1,426	1,318	1,269	1,259	1,156	1,082	1,057	1,029	955	898	763	769	689	663	622	517	484	443	422	227	176	740
Fife	4,433	4,261	4,353	4,076	3,813	3,406	3,525	3,478	3,251	3,318	3,217	3,046	2,890	2,722	2,597	2,425	2,460	2,204	2,053	2,057	1,952	1,729	1,628	1,369	1,292	1,225	1,121	758	544	2,501
Glasgow City	4,960	4,747	4,762	4,827	4,455	4,401	4,540	4,545	4,532	4,394	4,338	4,503	4,033	3,927	4,137	3,820	3,559	3,362	2,962	2,727	2,693	2,331	2,155	1,879	1,794	1,697	1,589	947	692	3,242
Highland	2,811	2,724	2,841	2,790	2,575	2,284	2,390	2,215	2,223	2,045	2,014	1,905	1,837	1,761	1,740	1,652	1,531	1,522	1,298	1,272	1,201	1,073	1,029	850	798	771	632	426	330	1,453
Inverclyde	988	889	969	936	797	808	795	807	811	737	755	699	658	638	682	660	592	575	462	443	457	376	365	321	289	284	261	164	132	546
Midlothian	1,015	980	936	864	775	775	763	771	762	694	726	672	625	548	607	569	520	511	408	406	349	328	321	269	213	260	263	101	99	437
Moray	1,042	1,053	1,055	1,025	994	906	933	860	892	837	810	870	829	758	665	682	607	588	549	481	469	437	387	338	312	246	278	174	135	522
North Ayrshire	1,687	1,616	1,726	1,630	1,544	1,442	1,566	1,408	1,442	1,270	1,283	1,222	1,190	1,127	1,087	1,028	952	889	785	687	729	607	532	520	472	480	411	247	208	849
North Lanarkshire	3,433	3,262	3,501	3,438	3,014	2,903	3,036	2,987	2,913	2,682	2,688	2,530	2,359	2,265	2,137	2,011	1,975	1,788	1,527	1,448	1,409	1,171	1,119	921	866	798	673	469	352	1,418
Orkney Islands	247	253	292	276	285	206	276	222	222	192	177	189	168	146	145	145	154	139	125	93	106	102	89	68	85	70	60	52	34	147
Perth & Kinross	1,899	1,796	1,770	1,748	1,708	1,479	1,541	1,632	1,417	1,451	1,398	1,396	1,253	1,200	1,210	1,204	1,098	1,045	932	970	871	772	774	677	619	534	529	318	273	1,166
Renfrewshire	1,871	1,859	1,988	1,792	1,706	1,653	1,569	1,658	1,590	1,565	1,501	1,466	1,335	1,201	1,276	1,242	1,169	1,043	919	838	860	763	629	583	558	427	504	267	211	958
Scottish Borders	1,512	1,410	1,483	1,519	1,257	1,216	1,256	1,341	1,216	1,181	1,126	1,075	1,021	961	972	938	881	797	774	702	676	631	534	500	461	434	403	256	187	745
Shetland Islands	254	268	252	282	261	207	225	184	189	189	172	167	169	136	140	129	133	138	117	103	95	119	84	81	87	79	75	30	42	149
South Ayrshire	1,489	1,508	1,452	1,453	1,374	1,215	1,306	1,200	1,230	1,246	1,219	1,148	1,070	1,072	1,038	988	908	823	745	736	800	664	621	511	524	452	438	241	197	1,010
South Lanarkshire	3,419	3,288	3,408	3,362	3,087	2,945	2,987	2,920	2,859	2,796	2,762	2,492	2,420	2,394	2,276	2,184	2,072	1,958	1,696	1,624	1,540	1,317	1,263	1,060	939	876	880	534	406	1,613
Stirling	1,050	934	1,032	959	920	849	850	889	789	827	774	736	672	672	666	593	577	502	490	434	414	452	361	296	308	302	272	164	118	574
West Dunbartonshire	1,059	968	1,032	938	886	800	801	850	788	778	765	756	696	731	708	631	638	588	492	475	460	409	364	299	282	302	259	186	136	530
West Lothian	1,864	1,777	1,728	1,680	1,544	1,454	1,420	1,457	1,330	1,253	1,231	1,188	1,029	912	990	864	804	736	663	634	558	526	479	392	334	350	297	203	150	614
NHS Board areas																														
Ayrshire & Arran	4,605	4,566	4,595	4,453	4,195	3,881	4,112	3,795	3,844	3,661	3,571	3,433	3,267	3,192	3,055	2,898	2,644	2,426	2,220	2,018	2,153	1,803	1,606	1,465	1,394	1,303	1,195	712	569	2,534
Borders	1,512	1,410	1,483	1,519	1,257	1,216	1,256	1,341	1,216	1,181	1,126	1,075	1,021	961	972	938	881	797	774	702	676	631	534	500	461	434	403	256	187	745
Dumfries & Galloway	2,070	2,041	2,101	2,081	1,963	1,844	1,850	1,788	1,706	1,756	1,649	1,508	1,489	1,489	1,387	1,321	1,294	1,211	1,056	1,068	947	892	743	715	628	559	503	313	278	1,131
Fife	4,431	4,261	4,351	4,074	3,812	3,406	3,524	3,477	3,250	3,318	3,217	3,045	2,889	2,721	2,597	2,494	2,460	2,203	2,053	2,057	1,952	1,729	1,627	1,369	1,292	1,225	1,121	758	544	2,500
Forth Valley	3,295	3,161	3,267	3,185	2,900	2,767	2,711	2,864	2,665	2,627	2,450	2,169	2,108	2,069	1,909	1,853	1,664	1,505	1,423	1,318	1,288	1,182	973	959	899	812	468	346	1,508	
Grampian	6,186	5,558	5,678	5,574	5,279	4,704	5,046	4,749	4,746	4,486	4,437	4,306	4,217	3,960	3,835	3,652	3,453	3,289	2,954	2,792	2,595	2,489	2,288	1,909	1,809	1,629	1,665	889	740	3,269
Greater Glasgow & Clyde	11,989	11,458	11,788	11,415	10,410	10,228	10,308	10,452	10,309	9,994	9,776	9,763	8,984	8,625	8,905	8,314	7,825	7,357	6,441	6,018	5,929	5,099	4,687	4,127	3,912	3,585	3,405	2,066	1,588	6,729
Highland	4,086	3,978	4,119	3,979	3,761	3,386	3,567	3,310	3,225	3,067	2,974	2,825	2,690	2,609	2,576	2,407	2													

Table 2 (continued)

MALES (continued)

Area	Age																														
	61	62	63	64	65	66	67	68	69	70	71	72	73	74	75	76	77	78	79	80	81	82	83	84	85	86	87	88	89	90+	
SCOTLAND	28,466	26,908	27,473	26,244	24,146	22,410	23,073	22,671	22,060	20,919	20,295	19,338	17,977	17,060	16,603	15,537	14,284	13,251	11,625	10,841	10,120	8,888	7,968	6,498	5,986	5,362	4,894	2,799	1,956	7,613	
Council areas																															
Aberdeen City	1,046	826	903	925	861	782	818	764	828	762	712	713	743	656	681	602	565	519	414	481	392	357	293	228	214	230	247	101	76	306	
Aberdeenshire	1,538	1,382	1,417	1,312	1,208	1,048	1,161	1,105	1,064	968	979	911	826	783	715	691	647	613	518	505	440	464	395	288	302	247	228	130	94	385	
Angus	699	653	692	667	630	589	575	546	524	559	541	480	444	404	408	441	394	303	338	261	272	218	201	185	158	106	144	92	56	224	
Argyll & Bute	599	653	656	601	588	548	551	529	482	487	456	422	389	378	368	353	292	319	281	231	206	214	164	157	114	121	117	65	22	210	
Clackmannanshire	306	285	296	267	234	212	212	195	232	216	181	179	173	180	177	119	132	110	119	95	86	61	68	57	53	46	33	26	12	57	
Dumfries & Galloway	1,035	977	1,037	968	956	875	916	836	854	853	782	687	681	716	641	616	568	503	436	438	422	373	277	272	223	197	181	108	79	287	
Dundee City	714	734	726	710	643	589	679	651	660	575	586	539	519	497	478	483	434	436	371	324	300	327	290	216	233	201	166	76	51	264	
East Ayrshire	708	688	701	662	579	571	557	605	557	510	493	483	441	432	393	378	317	298	298	248	230	217	177	154	126	113	119	77	36	173	
East Dunbartonshire	625	605	581	555	510	478	507	496	489	490	453	450	430	400	401	346	340	319	269	236	213	177	172	158	112	109	110	58	48	161	
East Lothian	560	529	544	497	498	464	406	405	484	398	361	352	369	316	368	316	274	285	244	224	238	197	145	145	127	113	97	58	33	174	
East Renfrewshire	518	452	438	421	380	400	374	388	410	371	357	325	328	308	301	290	254	226	208	177	232	160	150	120	127	95	83	46	40	111	
Edinburgh, City of	1,963	1,929	1,897	1,810	1,612	1,571	1,640	1,568	1,560	1,536	1,571	1,446	1,397	1,364	1,236	1,290	1,163	1,072	994	897	817	757	716	603	589	532	465	305	198	757	
Eilean Siar	195	161	184	160	153	150	142	154	146	133	123	143	119	98	121	89	87	95	67	69	68	57	56	46	37	25	38	11	7	42	
Falkirk	812	810	766	829	669	681	663	695	678	603	597	585	532	468	463	437	380	374	304	311	272	224	243	190	191	137	125	57	37	202	
Fife	2,157	2,086	2,054	1,946	1,855	1,632	1,643	1,654	1,539	1,538	1,439	1,409	1,314	1,239	1,163	1,058	990	914	839	874	726	622	603	428	439	412	357	208	172	539	
Glasgow City	2,405	2,297	2,270	2,234	2,121	1,972	2,055	1,997	1,998	1,918	1,827	1,790	1,573	1,569	1,595	1,480	1,360	1,258	1,060	954	970	803	744	589	541	492	418	231	157	674	
Highland	1,411	1,379	1,425	1,361	1,286	1,038	1,144	1,069	1,051	951	914	876	876	798	766	735	693	644	520	512	485	435	391	301	281	251	207	126	86	338	
Inverclyde	488	430	472	431	377	380	346	364	379	304	327	326	290	255	283	240	224	215	195	153	163	147	141	94	73	86	69	40	32	114	
Midlothian	485	504	445	412	365	374	346	373	352	336	328	299	267	246	266	262	215	221	170	204	134	106	126	94	74	89	107	23	17	105	
Moray	530	500	518	483	477	430	458	429	420	399	391	391	384	347	279	290	271	280	231	186	186	165	145	120	101	94	101	55	35	149	
North Ayrshire	834	771	836	768	684	660	741	707	667	577	606	553	517	492	472	424	400	339	293	270	281	237	194	200	151	137	106	70	57	199	
North Lanarkshire	1,668	1,524	1,655	1,582	1,428	1,364	1,411	1,362	1,291	1,156	1,127	1,010	986	958	825	813	718	610	579	536	415	382	318	298	238	211	144	98	311		
Orkney Islands	121	117	155	131	134	99	135	117	108	84	88	96	79	68	60	59	68	69	54	34	43	39	44	28	31	22	16	11	8	32	
Perth & Kinross	965	843	883	831	795	693	746	776	670	680	642	664	591	582	555	541	473	431	409	379	360	279	280	250	227	192	159	112	70	328	
Renfrewshire	865	871	949	857	800	781	735	732	714	663	674	649	561	494	557	517	470	450	379	339	329	292	221	196	208	136	171	73	71	233	
Scottish Borders	751	699	728	737	594	562	596	648	576	550	568	484	455	416	436	426	397	359	356	293	273	255	199	197	158	160	131	93	58	180	
Shetland Islands	133	124	136	143	126	101	118	97	88	92	95	68	91	54	61	69	64	62	34	38	37	50	36	27	20	26	31	12	12	33	
South Ayrshire	707	728	680	693	632	578	620	574	561	588	556	536	473	489	464	404	365	341	298	287	323	233	238	192	209	149	121	74	58	229	
South Lanarkshire	1,647	1,588	1,597	1,599	1,404	1,348	1,351	1,331	1,323	1,269	1,246	1,097	1,034	1,022	964	896	824	736	651	639	577	481	457	335	285	295	283	160	119	403	
Stirling	541	428	495	469	416	402	405	427	362	387	348	352	301	311	278	258	232	198	191	177	140	157	148	99	88	95	87	50	31	143	
West Dunbartonshire	545	475	502	407	404	360	350	381	365	338	334	337	298	286	278	241	235	238	199	145	154	150	116	78	89	94	59	46	48	115	
West Lothian	895	860	835	776	727	678	672	696	628	631	564	569	472	406	417	361	343	306	275	281	215	219	156	133	107	122	107	61	38	135	
NHS Board areas																															
Ayrshire & Arran	2,249	2,187	2,217	2,123	1,895	1,809	1,918	1,886	1,785	1,675	1,655	1,572	1,431	1,413	1,329	1,206	1,082	978	889	805	834	687	609	546	486	399	346	221	151	601	
Borders	751	699	728	737	594	562	596	648	576	550	568	484	455	416	436	426	397	359	356	293	273	255	199	197	158	160	131	93	58	180	
Dumfries & Galloway	1,035	977	1,037	968	956	875	916	836	854	853	782	687	681	716	641	616	568	503	436	438	422	373	277	272	223	197	181	108	79	287	
Fife	2,157	2,086	2,053	1,945	1,854	1,632	1,643	1,653	1,538	1,538	1,439	1,408	1,314	1,239	1,163	1,057	990	913	839	874	726	622	603	428	439	412	357	208	172	538	
Forth Valley	1,657	1,522	1,554	1,563	1,319	1,293	1,280	1,316	1,269	1,201	1,123	1,115	1,003	960	914	813	743	679	612	583	495	442	459	341	334	277	247	130	78	397	
Grampian	3,114	2,708	2,838	2,720	2,546	2,260	2,437	2,298	2,312	2,129	2,082	2,015	1,953	1,786	1,675	1,583	1,483	1,412	1,163	1,172	1,018	986	833	636	617	571	576	286	205	840	
Greater Glasgow	5,838	5,492	5,591	5,296	4,886	4,663	4,671	4,626	4,620	4,372	4,260	4,146	3,698	3,525	3,621	3,305	3,062	2,880	2,462	2,140	2,178	1,818	1,627	1,332	1,220	1,086	968	540	419	1,482	
Highland	2,010	2,032	2,081	1,962	1,874	1,586	1,695	1,598	1,533	1,438	1,370	1,298	1,265	1,176	1,134	1,088	985	963	801	743	691	649	555	458	395	372	324	191	108	548	
Lanarkshire	2,927	2,754	2,880	2,792	2,539	2,420	2,461	2,428	2,354	2,137	2,115	1,958	1,829	1,795	1,720	1,531	1,459	1,284	1,109	1,083	998	807	757	559	512	460	436	259	195	649	
Lothian	3,902	3,820	3,718	3,495	3,203	3,088	3,064	3,041	3,022	2,903	2,826	2,665	2,505	2,333	2,287	2,229	1,995	1,884	1,684	1,606	1,406	1,279	1,143	976	897	856	775	448	286	1,169	
Orkney	121	117	155	131	134	99	135	117	108	84	88	96	79	68	60	59	68	69	54	34	43	39	44	28	31	22					

Table 2 (continued)

FEMALES (continued)

Area	Age																														
	61	62	63	64	65	66	67	68	69	70	71	72	73	74	75	76	77	78	79	80	81	82	83	84	85	86	87	88	89	90+	
SCOTLAND	29,597	28,629	29,262	28,927	26,921	25,525	26,269	25,802	25,388	24,772	24,439	23,713	22,683	21,915	22,044	21,149	20,365	19,171	17,351	16,655	16,359	14,824	13,948	12,486	11,878	11,145	10,615	6,598	5,232	24,192	
Council areas																															
Aberdeen City	1,056	943	966	979	952	879	966	921	898	907	926	873	868	876	912	843	822	794	726	675	648	610	591	518	475	479	420	226	196	924	
Aberdeenshire	1,504	1,354	1,337	1,333	1,264	1,089	1,168	1,099	1,064	1,012	1,010	939	951	887	862	834	812	775	747	650	646	621	622	537	506	427	492	258	239	1,132	
Angus	714	730	729	708	662	600	663	590	615	600	568	591	551	489	547	527	461	480	423	423	418	368	364	321	297	261	235	155	115	655	
Argyll & Bute	676	601	622	588	598	554	626	566	520	535	504	498	464	470	468	402	418	385	354	332	349	310	291	249	252	246	226	165	91	567	
Clackmannanshire	291	312	304	296	269	251	236	258	224	270	233	205	173	172	174	173	194	161	137	124	133	114	130	107	113	112	86	60	45	148	
Dumfries & Galloway	1,035	1,064	1,064	1,113	1,007	969	934	952	852	903	867	821	808	773	746	705	726	708	620	630	525	519	466	443	405	362	322	205	199	844	
Dundee City	772	764	677	694	699	742	715	734	764	717	741	675	712	683	726	677	646	590	548	507	553	531	489	432	404	348	356	209	146	757	
East Ayrshire	721	754	716	708	698	653	683	582	615	635	576	580	566	561	537	504	467	416	392	347	394	315	276	280	272	258	227	147	128	502	
East Dunbartonshire	661	681	671	640	590	582	579	608	585	590	521	542	517	485	462	454	434	408	403	391	350	330	303	263	267	220	201	137	116	423	
East Lothian	547	542	605	534	520	497	506	483	512	435	472	476	441	425	394	387	399	382	330	339	339	275	267	258	244	247	232	100	110	503	
East Renfrewshire	474	510	540	530	450	457	456	438	484	435	463	439	428	394	434	388	376	375	334	347	308	256	274	225	245	208	199	132	128	422	
Edinburgh, City of	2,251	2,014	2,058	2,052	1,889	1,796	1,903	1,899	1,990	1,868	1,888	1,833	1,771	1,818	1,842	1,797	1,719	1,617	1,532	1,543	1,467	1,317	1,283	1,185	1,149	1,089	1,038	635	464	2,384	
Eilean Siar	170	164	155	182	146	183	176	147	153	145	130	141	157	125	117	123	127	113	103	105	97	100	86	103	85	80	51	37	179		
Falkirk	840	827	873	835	807	776	751	835	748	715	672	674	624	614	594	592	575	524	459	458	417	439	379	327	293	306	297	170	139	538	
Fife	2,276	2,175	2,299	2,130	1,958	1,774	1,882	1,824	1,712	1,780	1,778	1,637	1,576	1,483	1,434	1,437	1,470	1,290	1,214	1,183	1,226	1,107	1,025	941	853	813	764	550	372	1,962	
Glasgow City	2,555	2,450	2,492	2,593	2,334	2,429	2,485	2,548	2,534	2,476	2,511	2,713	2,460	2,358	2,542	2,340	2,199	2,104	1,902	1,773	1,528	1,411	1,290	1,253	1,205	1,171	716	535	2,568		
Highland	1,400	1,345	1,416	1,429	1,289	1,246	1,146	1,172	1,094	1,100	1,029	961	963	974	917	838	878	778	760	716	638	638	549	517	520	425	300	244	1,115		
Inverclyde	500	459	497	505	420	428	449	443	432	433	428	373	368	383	399	420	368	360	267	290	294	229	224	227	216	198	192	124	100	432	
Midlothian	530	476	491	452	410	401	417	398	410	358	398	373	358	302	341	307	305	290	238	202	215	222	195	175	139	171	156	78	82	332	
Moray	512	553	537	542	517	476	475	431	472	438	419	479	445	411	386	392	336	308	318	295	283	272	242	218	211	152	177	119	100	373	
North Ayrshire	853	845	890	862	860	782	825	701	775	693	677	669	673	635	615	604	552	550	492	417	448	370	338	320	321	343	305	177	151	650	
North Lanarkshire	1,765	1,738	1,846	1,856	1,586	1,539	1,625	1,625	1,622	1,529	1,532	1,403	1,349	1,279	1,179	1,186	1,162	1,070	917	869	873	756	737	603	568	560	462	325	254	1,107	
Orkney Islands	126	136	137	145	151	107	141	105	114	108	89	93	89	78	85	86	86	70	71	59	63	63	45	40	54	48	44	41	26	115	
Perth & Kinross	934	953	887	917	913	786	795	856	747	771	756	732	662	618	655	663	625	614	523	591	511	493	494	427	392	342	370	206	203	838	
Renfrewshire	1,006	988	1,039	935	906	872	834	926	876	902	827	817	774	707	719	725	699	593	540	499	531	471	408	387	350	291	333	194	140	725	
Scottish Borders	761	711	755	782	663	654	660	693	640	631	558	591	566	545	536	512	484	438	418	409	403	376	335	303	303	274	272	163	129	565	
Shetland Islands	121	144	116	139	135	106	107	87	101	97	77	99	78	82	79	60	69	76	83	65	58	69	48	54	67	53	44	18	30	116	
South Ayrshire	782	780	772	760	742	637	686	626	669	658	663	612	597	583	574	584	543	482	447	449	477	431	383	319	315	303	317	167	139	781	
South Lanarkshire	1,772	1,700	1,811	1,763	1,683	1,597	1,636	1,589	1,536	1,527	1,516	1,395	1,386	1,372	1,312	1,288	1,248	1,222	1,045	985	963	836	806	725	654	581	597	374	287	1,210	
Stirling	509	506	537	490	504	447	445	462	427	440	426	384	371	361	388	335	345	304	299	257	274	295	213	197	220	207	185	114	87	431	
West Dunbartonshire	514	493	530	531	482	440	451	469	423	440	431	419	398	445	430	390	403	350	293	330	306	259	248	221	193	208	200	140	88	415	
West Lothian	969	917	893	904	817	776	748	761	702	622	667	619	557	506	573	503	461	430	388	353	343	307	323	259	227	228	190	142	112	479	
NHS Board areas																															
Ayrshire & Arran	2,356	2,379	2,378	2,330	2,300	2,072	2,194	1,909	2,059	1,986	1,916	1,861	1,836	1,779	1,726	1,692	1,562	1,448	1,331	1,213	1,319	1,116	997	919	908	904	849	491	418	1,933	
Borders	761	711	755	782	663	654	660	693	640	631	558	591	566	545	536	512	484	438	418	409	403	376	335	303	303	274	272	163	129	565	
Dumfries & Galloway	1,035	1,064	1,064	1,113	1,007	969	934	952	852	903	867	821	808	773	746	705	726	708	620	630	525	519	466	443	405	362	322	205	199	844	
Fife	2,274	2,175	2,298	2,129	1,958	1,774	1,881	1,824	1,712	1,780	1,778	1,637	1,575	1,482	1,434	1,437	1,470	1,290	1,214	1,183	1,226	1,107	1,024	941	853	813	764	550	372	1,962	
Forth Valley	1,638	1,639	1,713	1,622	1,581	1,474	1,431	1,548	1,396	1,426	1,327	1,261	1,166	1,148	1,155	1,096	1,110	985	893	840	823	846	723	632	625	622	565	338	268	1,111	
Grampian	3,072	2,850	2,840	2,854	2,733	2,444	2,609	2,451	2,434	2,357	2,355	2,291	2,264	2,174	2,160	2,069	1,970	1,877	1,791	1,620	1,577	1,503	1,455	1,273	1,192	1,058	1,089	603	535	2,429	
Greater Glasgow	6,151	5,966	6,197	6,119	5,524	5,565	5,637	5,826	5,689	5,622	5,516	5,617	5,286	5,100	5,284	5,009	4,763	4,477	3,979	3,878	3,751	3,281	3,060	2,795	2,692	2,499	2,437	1,526	1,169	5,247	
Highland	2,076	1,946	2,038	2,017	1,887	1,800	1,872	1,712	1,692	1,629	1,604	1,527	1,425	1,433	1,442	1,319	1,256	1,263	1,132	1,092	1,065	948	929	798	769	766	651	465	335	1,682	
Lanarkshire	3,096	3,060	3,233	3,234	2,929	2,781	2,882	2,828	2,807	2,709	2,718	2,487	2,396	2,324	2,194	2,186	2,128	2,007	1,724	1,605	1,599	1,388	1,351	1,146	1,056	975	919	620	483	2,089	
Lothian	4,300	3,948	4,046	3,941	3,634	3,469	3,572	3,540	3,614	3,284	3,424	3,299	3,127	3,050	3,150	2,995	2,886	2,720	2,488	2,438	2,363	2,120	2,068	1,87							

Table 3 Estimated population by sex, five year age group and administrative area: 30 June 2007

Area	Age group																			Area	
	All Ages	0 - 4	5 - 9	10 - 14	15 - 19	20 - 24	25 - 29	30 - 34	35 - 39	40 - 44	45 - 49	50 - 54	55 - 59	60 - 64	65 - 69	70 - 74	75 - 79	80 - 84	85 - 89		90+
SCOTLAND	5,144,200	275,200	273,440	302,694	329,573	346,810	323,992	305,296	375,288	405,468	385,452	343,339	331,042	300,993	244,265	213,111	171,380	118,587	66,465	31,805	SCOTLAND
Council areas																					Council areas
Aberdeen City	209,260	10,485	9,692	10,411	12,990	18,100	17,918	14,720	15,069	15,431	15,157	13,713	12,823	10,481	8,669	8,036	6,878	4,793	2,664	1,230	Aberdeen City
Aberdeenshire	239,160	13,464	14,012	15,564	15,188	11,852	10,717	12,918	18,295	20,262	19,111	17,990	17,406	15,023	11,270	9,266	7,214	5,168	2,923	1,517	Aberdeenshire
Angus	109,870	5,822	5,998	6,652	6,617	5,424	4,929	5,523	7,472	8,592	8,425	7,722	8,041	7,581	5,994	5,227	4,322	3,031	1,619	879	Angus
Argyll & Bute	91,350	4,023	4,619	5,577	5,595	4,687	3,780	4,443	6,175	7,065	6,907	6,461	6,771	6,743	5,562	4,603	3,640	2,503	1,419	777	Argyll & Bute
Clackmannanshire	49,900	2,779	2,854	3,205	3,297	2,907	2,722	2,921	3,729	4,184	3,756	3,376	3,444	3,159	2,323	1,982	1,496	975	586	205	Clackmannanshire
Dumfries & Galloway	148,300	7,255	7,397	8,916	8,768	6,925	6,227	6,689	9,595	11,547	11,234	10,474	11,243	10,942	9,151	7,891	6,269	4,365	2,281	1,131	Dumfries & Galloway
Dundee City	142,150	7,551	6,801	7,608	9,820	12,969	10,883	7,557	8,771	9,855	9,877	8,576	8,363	7,830	6,876	6,244	5,389	3,969	2,190	1,021	Dundee City
East Ayrshire	119,570	6,436	6,334	7,290	8,090	7,027	6,254	6,592	8,967	9,745	8,867	8,010	8,181	7,584	6,100	5,277	4,000	2,638	1,503	675	East Ayrshire
East Dunbartonshire	104,850	5,021	6,031	6,950	7,111	6,263	4,840	4,310	6,612	8,414	8,822	7,903	7,200	6,680	5,424	4,878	3,836	2,593	1,378	584	East Dunbartonshire
East Lothian	94,440	5,474	5,587	6,286	5,950	4,600	3,712	4,984	7,291	8,015	7,378	6,559	6,185	5,755	4,775	4,045	3,379	2,427	1,361	677	East Lothian
East Renfrewshire	89,260	4,885	5,597	6,295	6,157	5,060	3,824	3,716	5,837	7,479	7,551	6,474	5,816	5,213	4,237	3,848	3,186	2,249	1,303	533	East Renfrewshire
Edinburgh, City of	468,070	22,329	20,836	22,177	27,816	45,569	47,566	37,092	35,294	34,354	31,679	27,313	25,804	21,869	17,428	16,492	14,262	10,585	6,464	3,141	Edinburgh, City of
Eilean Siar	26,300	1,305	1,330	1,609	1,589	1,079	1,137	1,378	1,820	1,965	1,959	1,887	1,973	1,831	1,550	1,342	1,064	787	474	221	Eilean Siar
Falkirk	150,720	8,773	8,428	9,073	9,642	8,291	9,095	9,592	11,941	12,399	11,219	9,689	9,905	8,832	7,303	6,084	4,702	3,260	1,752	740	Falkirk
Fife	360,500	19,579	19,428	21,554	23,749	24,340	19,961	19,834	26,240	28,005	26,614	23,773	23,927	22,845	17,473	15,193	11,809	8,735	4,940	2,501	Fife
Glasgow City	581,940	31,668	28,182	30,202	37,858	53,817	53,948	44,240	44,291	43,923	41,085	34,851	29,151	25,470	22,473	21,195	17,840	11,785	6,719	3,242	Glasgow City
Highland	217,440	11,295	11,808	13,245	12,959	10,239	10,982	11,525	14,848	17,434	16,975	16,165	16,481	14,657	11,687	9,562	7,743	5,425	2,957	1,453	Highland
Inverclyde	81,080	4,271	4,226	4,824	5,409	5,285	4,509	4,179	5,442	6,518	6,413	5,554	5,399	4,937	4,018	3,487	2,971	1,962	1,130	546	Inverclyde
Midlothian	79,510	4,537	4,733	4,980	5,444	4,544	3,753	4,143	5,908	6,393	6,200	5,496	5,514	5,093	3,846	3,265	2,615	1,673	936	437	Midlothian
Moray	86,870	4,391	4,645	5,538	5,668	4,610	4,037	4,709	6,631	7,075	6,524	5,961	5,946	5,576	4,585	4,104	3,091	2,112	1,145	522	Moray
North Ayrshire	135,760	7,347	7,233	8,564	9,038	7,899	6,921	7,061	9,408	10,604	10,026	9,298	9,460	8,924	7,402	6,092	4,741	3,075	1,818	849	North Ayrshire
North Lanarkshire	324,680	19,559	19,171	20,266	21,401	21,158	20,241	20,178	25,324	26,290	24,266	21,631	19,801	17,935	14,853	12,524	9,438	6,068	3,158	1,418	North Lanarkshire
Orkney Islands	19,860	953	976	1,304	1,284	875	914	958	1,359	1,662	1,511	1,489	1,473	1,405	1,211	872	708	458	301	147	Orkney Islands
Perth & Kinross	142,140	6,945	7,657	8,567	8,553	8,433	6,893	6,953	9,414	11,166	10,508	9,868	10,132	9,584	7,777	6,698	5,489	4,064	2,273	1,166	Perth & Kinross
Renfrewshire	169,600	9,331	9,211	10,092	10,864	10,748	10,107	9,219	12,517	14,103	13,609	11,323	10,947	10,038	8,176	7,068	5,649	3,673	1,967	958	Renfrewshire
Scottish Borders	111,430	5,787	6,057	6,850	6,589	4,920	4,496	5,384	8,036	9,165	8,730	7,841	8,092	7,942	6,286	5,364	4,362	3,043	1,741	745	Scottish Borders
Shetland Islands	21,950	1,249	1,305	1,467	1,434	1,020	1,150	1,393	1,567	1,726	1,656	1,539	1,546	1,398	1,066	833	657	482	313	149	Shetland Islands
South Ayrshire	111,690	5,200	5,683	6,396	6,840	6,199	5,285	5,217	7,302	8,349	8,633	7,962	8,052	7,796	6,325	5,755	4,502	3,332	1,852	1,010	South Ayrshire
South Lanarkshire	309,500	17,061	17,214	19,057	19,795	19,224	17,894	17,712	23,054	24,881	24,166	21,739	19,865	17,938	14,798	12,864	10,186	6,804	3,635	1,613	South Lanarkshire
Stirling	88,190	4,710	5,032	5,595	7,027	6,330	4,224	4,196	6,356	6,962	6,500	5,633	5,754	5,370	4,297	3,681	2,828	1,957	1,164	574	Stirling
West Dunbartonshire	91,090	4,971	4,795	5,499	6,119	6,413	5,386	5,108	6,482	7,327	7,012	6,272	5,848	5,248	4,125	3,726	3,057	2,007	1,165	530	West Dunbartonshire
West Lothian	167,770	10,744	10,568	11,081	10,912	10,003	9,687	10,852	14,241	14,578	13,082	10,797	10,499	9,314	7,205	5,613	4,057	2,589	1,334	614	West Lothian
NHS Board areas																					NHS Board areas
Ayrshire & Arran	367,020	18,983	19,250	22,250	23,968	21,125	18,460	18,870	25,677	28,698	27,526	25,270	25,693	24,304	19,827	17,124	13,243	9,045	5,173	2,534	Ayrshire & Arran
Borders	111,430	5,787	6,057	6,850	6,589	4,920	4,496	5,384	8,036	9,165	8,730	7,841	8,092	7,942	6,286	5,364	4,362	3,043	1,741	745	Borders
Dumfries & Galloway	148,300	7,255	7,397	8,916	8,768	6,925	6,227	6,689	9,595	11,547	11,234	10,474	11,243	10,942	9,151	7,891	6,269	4,365	2,281	1,131	Dumfries & Galloway
Fife	360,428	19,579	19,426	21,544	23,743	24,339	19,959	19,834	26,235	27,996	26,608	23,768	23,921	22,836	17,469	15,190	11,807	8,734	4,940	2,500	Fife
Forth Valley	288,473	16,252	16,308	17,854	19,953	17,521	16,026	16,692	21,994	23,526	21,455	18,664	19,071	17,344	13,907	11,730	9,000	6,184	3,484	1,508	Forth Valley
Grampian	535,290	28,340	28,349	31,513	33,846	34,562	32,672	32,347	39,995	42,768	40,792	37,664	36,175	31,080	24,524	21,406	17,183	12,073	6,732	3,269	Grampian
Greater Glasgow & Clyde	1,192,419	64,613	62,173	68,273	78,123	92,141	87,360	75,512	86,985	93,597	90,201	77,697	69,149	61,759	51,707	47,142	38,842	25,860	14,556	6,729	Greater Glasgow & Clyde
Highland	308,790	15,318	16,427	18,822	18,554	14,926	14,762	15,968	21,023	24,499	23,882	22,626	23,252	21,400	17,249	14,165	11,383	7,928	4,376	2,230	Highland
Lanarkshire	560,042	32,178	32,280	34,938	36,618	35,791	33,363	33,155	42,627	45,388	42,771	38,099	34,915	31,734	26,429	22,468	17,342	11,293	5,915	2,738	Lanarkshire
Lothian	809,764	43,076	41,708	44,522	50,116	64,767	64,760	57,078	62,714	63,314	58,316	50,151	47,998	42,021	33,247	29,416	24,318	17,277	10,096	4,869	Lothian
Orkney	19,860	953	976	1,304	1,284	875	914	958	1,359	1,662	1,511	1,489	1,473	1,405	1,211	872	708	458	301	147	Orkney
Shetland	21,950	1,249	1,305	1,467	1,434	1,020	1,150	1,393	1,567	1,726	1,656	1,539	1,546	1,398	1,066	833	657	482	313	149	Shetland
Tayside	394,134	20,312	20,454	22,832	24,988	26,819	22,706	20,038	25,661	29,617	28,811	26,170	26,541	24,997	20,642	18,168	15,202	11,058	6,083	3,035	

Table 3 (continued)

MALES

Area	Age group																			Area		
	All Ages	0 - 4	5 - 9	10 - 14	15 - 19	20 - 24	25 - 29	30 - 34	35 - 39	40 - 44	45 - 49	50 - 54	55 - 59	60 - 64	65 - 69	70 - 74	75 - 79	80 - 84	85 - 89		90+	
SCOTLAND	2,485,599	141,148	139,814	154,879	169,364	175,304	163,781	149,250	179,844	194,658	186,904	168,082	162,448	145,949	114,360	95,589	71,300	44,315	20,997	7,613		
Council areas																					Council areas	
Aberdeen City	103,203	5,299	5,028	5,437	6,224	8,601	9,836	7,959	7,643	7,718	7,462	7,046	6,493	5,112	4,053	3,586	2,781	1,751	868		306	Aberdeen City
Aberdeenshire	118,484	6,981	7,298	7,992	7,782	6,390	5,474	6,062	8,745	9,964	9,638	8,971	8,914	7,558	5,586	4,467	3,184	2,092	1,001		385	Aberdeenshire
Angus	53,120	2,976	3,077	3,377	3,478	2,906	2,471	2,638	3,537	4,127	4,097	3,746	3,942	3,655	2,864	2,428	1,884	1,137	556		224	Angus
Argyll & Bute	45,504	2,055	2,303	2,829	2,964	2,846	2,258	2,288	3,102	3,499	3,449	3,275	3,259	3,313	2,698	2,132	1,613	972	439		210	Argyll & Bute
Clackmannanshire	24,301	1,433	1,466	1,596	1,651	1,602	1,332	1,390	1,829	2,036	1,842	1,640	1,677	1,542	1,085	929	657	367	170		57	Clackmannanshire
Dumfries & Galloway	71,791	3,707	3,808	4,529	4,610	3,607	3,000	3,150	4,564	5,623	5,378	5,074	5,637	5,327	4,437	3,719	2,764	1,782	788		287	Dumfries & Galloway
Dundee City	67,411	3,904	3,470	3,948	4,720	6,322	5,601	3,634	4,036	4,529	4,563	4,171	4,061	3,864	3,222	2,716	2,202	1,457	727		264	Dundee City
East Ayrshire	57,731	3,315	3,221	3,790	4,141	3,581	3,044	3,219	4,271	4,700	4,230	3,919	4,034	3,684	2,869	2,359	1,684	1,026	471		173	East Ayrshire
East Dunbartonshire	50,494	2,614	3,138	3,613	3,768	3,311	2,631	1,976	3,025	3,858	4,192	3,793	3,463	3,180	2,480	2,223	1,675	956	437		161	East Dunbartonshire
East Lothian	45,333	2,850	2,793	3,182	3,107	2,413	1,817	2,283	3,391	3,808	3,596	3,259	2,923	2,820	2,257	1,796	1,487	949	428		174	East Lothian
East Renfrewshire	42,572	2,474	2,951	3,184	3,246	2,705	1,980	1,640	2,623	3,440	3,668	3,148	2,798	2,454	1,952	1,689	1,279	839	391		111	East Renfrewshire
Edinburgh, City of	225,926	11,593	10,656	11,570	14,072	21,500	23,740	18,842	17,565	16,692	15,396	13,577	12,614	10,453	7,951	7,314	5,755	3,790	2,089		757	Edinburgh, City of
Eilean Siar	12,922	641	665	796	854	622	549	679	906	988	1,017	973	1,024	932	745	616	459	296	118		42	Eilean Siar
Falkirk	72,981	4,509	4,319	4,655	5,059	4,127	4,482	4,647	5,691	6,038	5,550	4,670	4,777	4,339	3,386	2,785	1,958	1,240	547		202	Falkirk
Fife	173,957	9,984	9,931	10,927	12,135	12,310	9,999	9,586	12,643	13,524	13,039	11,673	11,533	11,067	8,323	6,939	4,964	3,253	1,588		539	Fife
Glasgow City	279,865	16,201	14,327	15,456	19,280	26,518	27,434	22,534	21,665	20,935	19,553	17,149	14,457	12,210	10,143	8,677	6,753	4,060	1,839		674	Glasgow City
Highland	106,453	5,769	6,158	6,727	6,902	5,624	5,528	5,657	7,002	8,432	8,315	8,000	8,233	7,332	5,588	4,415	3,358	2,124	951		338	Highland
Inverclyde	38,686	2,219	2,189	2,427	2,805	2,726	2,302	2,007	2,491	3,084	3,085	2,718	2,634	2,382	1,846	1,502	1,157	698	300		114	Inverclyde
Midlothian	37,698	2,341	2,345	2,520	2,790	2,318	1,747	1,866	2,725	2,914	2,904	2,628	2,653	2,448	1,810	1,476	1,134	664	310		105	Midlothian
Moray	43,725	2,270	2,467	2,841	3,039	2,641	2,270	2,438	3,435	3,599	3,346	2,931	2,946	2,688	2,214	1,912	1,351	802	386		149	Moray
North Ayrshire	64,331	3,797	3,622	4,391	4,719	3,972	3,319	3,271	4,321	4,846	4,738	4,414	4,591	4,296	3,459	2,745	1,928	1,182	521		199	North Ayrshire
North Lanarkshire	156,107	10,054	9,777	10,405	11,046	10,653	10,068	9,716	11,958	12,587	11,584	10,447	9,528	8,542	6,856	5,432	3,924	2,230	989		311	North Lanarkshire
Orkney Islands	9,779	486	503	650	685	469	452	458	655	762	734	740	704	593	415	310	188	88			32	Orkney Islands
Perth & Kinross	69,135	3,534	3,950	4,303	4,586	4,493	3,661	3,377	4,341	5,442	5,156	4,754	4,972	4,682	3,680	3,159	2,409	1,548	760		328	Perth & Kinross
Renfrewshire	80,991	4,756	4,649	5,222	5,510	5,449	5,026	4,409	5,806	6,683	6,499	5,471	5,261	4,805	3,762	3,041	2,373	1,377	659		233	Renfrewshire
Scottish Borders	53,998	2,965	3,065	3,481	3,406	2,461	2,274	2,524	3,922	4,452	4,253	3,873	3,997	3,905	2,976	2,473	1,974	1,217	600		180	Scottish Borders
Shetland Islands	11,037	649	652	741	742	591	597	686	767	897	829	774	835	735	530	400	290	188	101		33	Shetland Islands
South Ayrshire	53,299	2,619	2,943	3,212	3,498	3,203	2,629	2,507	3,472	3,940	4,154	3,851	3,945	3,734	2,965	2,642	1,872	1,273	611		229	South Ayrshire
South Lanarkshire	148,052	8,647	8,702	9,689	10,331	9,863	8,902	8,375	10,976	11,686	11,704	10,393	9,673	8,581	6,757	5,668	4,071	2,489	1,142		403	South Lanarkshire
Stirling	42,065	2,438	2,596	2,849	3,467	3,202	1,993	1,854	2,877	3,274	3,227	2,731	2,864	2,610	2,012	1,699	1,157	721	351		143	Stirling
West Dunbartonshire	43,219	2,581	2,416	2,869	3,146	3,274	2,607	2,420	3,038	3,434	3,356	2,995	2,814	2,531	1,860	1,593	1,191	643	336		115	West Dunbartonshire
West Lothian	81,429	5,487	5,329	5,671	5,601	5,004	4,758	5,158	6,822	7,054	6,322	5,284	5,156	4,464	3,401	2,642	1,702	1,004	435		135	West Lothian
NHS Board areas																					NHS Board areas	
Ayrshire & Arran	175,361	9,731	9,786	11,393	12,358	10,756	8,992	8,997	12,064	13,486	13,122	12,184	12,570	11,714	9,293	7,746	5,484	3,481	1,603		601	Ayrshire & Arran
Borders	53,998	2,965	3,065	3,481	3,406	2,461	2,274	2,524	3,922	4,452	4,253	3,873	3,997	3,905	2,976	2,473	1,974	1,217	600		180	Borders
Dumfries & Galloway	71,791	3,707	3,808	4,529	4,610	3,607	3,000	3,150	4,564	5,623	5,378	5,074	5,637	5,327	4,437	3,719	2,764	1,782	788		287	Dumfries & Galloway
Fife	173,923	9,984	9,930	10,920	12,132	12,310	9,998	9,586	12,643	13,520	13,036	11,671	11,529	11,065	8,320	6,938	4,962	3,253	1,588		538	Fife
Forth Valley	139,171	8,374	8,379	9,093	10,169	8,920	7,797	7,877	10,382	11,340	10,606	9,028	9,300	8,483	6,477	5,402	3,761	2,320	1,066		397	Forth Valley
Grampian	265,412	14,550	14,793	16,270	17,045	17,632	17,580	16,459	19,823	21,281	20,446	18,948	18,353	15,358	11,853	9,965	7,316	4,645	2,255		840	Grampian
Greater Glasgow & Clyde	570,953	33,129	31,764	34,983	40,074	46,211	44,327	37,163	41,404	44,082	43,092	37,783	33,753	29,581	23,466	20,001	15,330	9,095	4,233		1,482	Greater Glasgow & Clyde
Highland	151,957	7,824	8,461	9,556	9,866	8,470	7,786	7,945	10,104	11,931	11,764	11,275	11,492	10,645	8,286	6,547	4,971	3,096	1,390		548	Highland
Lanarkshire	269,232	16,431	16,398	17,891	19,078	18,261	16,609	15,911	20,210	21,647	20,570	18,356	16,893	15,123	12,202	9,834	7,103	4,204	1,862		649	Lanarkshire
Lothian	390,388	22,266	21,113	22,943	25,561	31,272	32,086	28,162	30,486	30,459	28,210	24,737	23,345	20,178	15,418	13,232	10,079	6,410	3,262		1,169	Lothian
Orkney	9,779	486	503	650	685	469	452	458	655	762	734	740	704	593	415	310	188	88			32	Orkney
Shetland	11,037	649	652	741	742	591	597	686	767	897	829	774	835	735	530	400	290	188	101		33	Shetland
Tayside	189,675	10,411	10,497	11,633	12,784	13,722	11,734	9,653	11,914	14,097	13,819	12,672	12,980	12,199	9,764	8,301	6,497	4,140	2,043		815	Tayside
Western Isles	12,922	641	665	796	854	622	549	679	906	988	1,017	973	1,024	932	745	616	459	296	118		42	

Table 3 (continued)

FEMALES

Area	Age group																			Area	
	All Ages	0 - 4	5 - 9	10 - 14	15 - 19	20 - 24	25 - 29	30 - 34	35 - 39	40 - 44	45 - 49	50 - 54	55 - 59	60 - 64	65 - 69	70 - 74	75 - 79	80 - 84	85 - 89		90+
Council areas	2,658,601	134,052	133,626	147,815	160,209	171,506	160,211	156,046	195,444	210,810	198,548	175,257	168,594	155,044	129,905	117,522	100,080	74,272	45,468	24,192	SCOTLAND
																					Council areas
Aberdeen City	106,057	5,186	4,664	4,974	6,766	9,499	8,082	6,761	7,426	7,713	7,695	6,667	6,330	5,369	4,616	4,450	4,097	3,042	1,796	924	Aberdeen City
Aberdeenshire	120,676	6,483	6,714	7,572	7,406	5,462	5,243	6,856	9,550	10,298	9,473	9,019	8,492	7,465	5,684	4,799	4,030	3,076	1,922	1,132	Aberdeenshire
Angus	56,750	2,846	2,921	3,275	3,139	2,518	2,458	2,885	3,935	4,465	4,328	3,976	4,099	3,926	3,130	2,799	2,438	1,894	1,063	655	Angus
Argyll & Bute	45,846	1,968	2,316	2,748	2,631	1,841	1,522	2,155	3,073	3,566	3,458	3,186	3,512	3,430	2,864	2,471	2,027	1,531	980	567	Argyll & Bute
Clackmannanshire	25,599	1,346	1,388	1,609	1,646	1,305	1,390	1,531	1,900	2,148	1,914	1,736	1,767	1,617	1,238	1,053	839	608	416	148	Clackmannanshire
Dumfries & Galloway	76,509	3,548	3,589	4,387	4,158	3,318	3,227	3,539	5,031	5,924	5,856	5,400	5,606	5,615	4,714	4,172	3,505	2,583	1,493	844	Dumfries & Galloway
Dundee City	74,739	3,647	3,331	3,660	5,100	6,647	5,282	3,923	4,735	5,326	5,314	4,405	4,302	3,966	3,654	3,528	3,187	2,512	1,463	757	Dundee City
East Ayrshire	61,839	3,121	3,113	3,500	3,949	3,446	3,277	3,373	4,696	5,045	4,637	4,091	4,147	3,900	3,231	2,918	2,316	1,612	1,032	502	East Ayrshire
East Dunbartonshire	54,356	2,407	2,893	3,337	3,343	2,952	2,209	2,334	3,587	4,556	4,630	4,110	3,737	3,500	2,944	2,655	2,161	1,637	941	423	East Dunbartonshire
East Lothian	49,107	2,624	2,794	3,104	2,843	2,187	1,895	2,701	3,900	4,207	3,782	3,300	3,262	2,935	2,518	2,249	1,892	1,478	933	503	East Lothian
East Renfrewshire	46,688	2,411	2,646	3,111	2,911	2,355	1,844	2,076	3,214	4,039	3,883	3,326	3,018	2,759	2,285	2,159	1,907	1,410	912	422	East Renfrewshire
Edinburgh, City of	242,144	10,736	10,180	10,607	13,744	24,069	23,826	18,250	17,729	17,662	16,283	13,736	13,190	11,416	9,477	9,178	8,507	6,795	4,375	2,384	Edinburgh, City of
Eilean Siar	13,378	664	665	813	735	457	588	699	914	977	942	914	949	899	805	726	605	491	356	179	Eilean Siar
Falkirk	77,739	4,264	4,109	4,418	4,583	4,164	4,613	4,945	6,250	6,361	5,669	5,019	5,128	4,493	3,917	3,299	2,744	2,020	1,205	538	Falkirk
Fife	186,543	9,595	9,497	10,627	11,614	12,030	9,962	10,248	13,597	14,481	13,575	12,100	12,394	11,778	9,150	8,254	6,845	5,482	3,352	1,962	Fife
Glasgow City	302,075	15,467	13,855	14,746	18,578	27,299	26,514	21,706	22,626	22,988	21,532	17,702	14,694	13,260	12,330	12,518	11,087	7,725	4,880	2,568	Glasgow City
Highland	110,987	5,526	5,650	6,518	6,057	4,615	5,454	5,868	7,846	9,002	8,660	8,165	8,248	7,325	6,099	5,147	4,385	3,301	2,006	1,115	Highland
Inverclyde	42,394	2,052	2,037	2,397	2,604	2,559	2,207	2,172	2,951	3,434	3,328	2,836	2,765	2,555	2,172	1,985	1,814	1,264	830	432	Inverclyde
Midlothian	41,812	2,196	2,388	2,460	2,654	2,226	2,006	2,277	3,183	3,479	3,296	2,868	2,861	2,645	2,036	1,789	1,481	1,009	626	332	Midlothian
Moray	43,145	2,121	2,178	2,697	2,629	1,969	1,767	2,271	3,196	3,476	3,178	3,030	3,000	2,888	2,371	2,192	1,740	1,310	759	373	Moray
North Ayrshire	71,429	3,550	3,611	4,173	4,319	3,927	3,602	3,790	5,087	5,758	5,288	4,884	4,869	4,628	3,943	3,347	2,813	1,893	1,297	650	North Ayrshire
North Lanarkshire	168,573	9,505	9,394	9,861	10,355	10,505	10,173	10,462	13,366	13,703	12,682	11,184	10,273	9,393	7,997	7,092	5,514	3,838	2,169	1,107	North Lanarkshire
Orkney Islands	10,081	467	473	654	599	406	462	500	704	807	749	755	733	701	618	457	398	270	213	115	Orkney Islands
Perth & Kinross	73,005	3,411	3,707	4,264	3,967	3,940	3,232	3,576	5,073	5,724	5,352	5,114	5,160	4,902	4,097	3,539	3,080	2,516	1,513	838	Perth & Kinross
Renfrewshire	88,609	4,575	4,562	4,870	5,354	5,299	5,081	4,810	6,711	7,420	7,110	5,852	5,686	5,233	4,414	4,027	3,276	2,296	1,308	725	Renfrewshire
Scottish Borders	57,432	2,822	2,992	3,369	3,183	2,459	2,222	2,860	4,114	4,713	4,477	3,968	4,095	4,037	3,310	2,891	2,388	1,826	1,141	565	Scottish Borders
Shetland Islands	10,913	600	653	726	692	429	553	707	800	829	827	765	711	663	536	433	367	294	212	116	Shetland Islands
South Ayrshire	58,391	2,581	2,740	3,184	3,342	2,996	2,656	2,710	3,830	4,409	4,479	4,111	4,107	4,062	3,360	3,113	2,630	2,059	1,241	781	South Ayrshire
South Lanarkshire	161,448	8,414	8,512	9,368	9,464	9,361	8,992	9,337	12,078	13,195	12,462	11,346	10,192	9,357	8,041	7,196	6,115	4,315	2,493	1,210	South Lanarkshire
Stirling	46,125	2,272	2,436	2,746	3,560	3,128	2,231	2,342	3,479	3,688	3,273	2,902	2,890	2,760	2,285	1,982	1,671	1,236	813	431	Stirling
West Dunbartonshire	47,871	2,390	2,379	2,630	2,973	3,139	2,779	2,688	3,444	3,893	3,656	3,277	3,034	2,717	2,265	2,133	1,866	1,364	829	415	West Dunbartonshire
West Lothian	86,341	5,257	5,239	5,410	5,311	4,999	4,929	5,694	7,419	7,524	6,760	5,513	5,343	4,850	3,804	2,971	2,355	1,585	899	479	West Lothian
NHS Board areas																					NHS Board areas
Ayrshire & Arran	191,659	9,252	9,464	10,857	11,610	10,369	9,468	9,873	13,613	15,212	14,404	13,086	13,123	12,590	10,534	9,378	7,759	5,564	3,570	1,933	Ayrshire & Arran
Borders	57,432	2,822	2,992	3,369	3,183	2,459	2,222	2,860	4,114	4,713	4,477	3,968	4,095	4,037	3,310	2,891	2,388	1,826	1,141	565	Borders
Dumfries & Galloway	76,509	3,548	3,589	4,387	4,158	3,318	3,227	3,539	5,031	5,924	5,856	5,400	5,606	5,615	4,714	4,172	3,505	2,583	1,493	844	Dumfries & Galloway
Fife	186,505	9,595	9,496	10,624	11,611	12,029	9,961	10,248	13,592	14,476	13,572	12,097	12,392	11,771	9,149	8,252	6,845	5,481	3,352	1,962	Fife
Forth Valley	149,302	7,878	7,929	8,761	9,784	8,601	8,229	8,815	11,612	12,186	10,849	9,636	9,771	8,861	7,430	6,328	5,239	3,864	2,418	1,111	Forth Valley
Grampian	269,878	13,790	13,556	15,243	16,801	16,930	15,092	15,888	20,172	21,487	20,346	18,716	17,822	15,722	12,630	11,441	9,867	7,428	4,477	2,429	Grampian
Greater Glasgow & Clyde	621,466	31,484	30,409	33,290	38,049	45,930	43,033	38,349	45,581	49,515	47,109	39,914	35,396	32,178	28,241	27,141	23,512	16,765	10,323	5,247	Greater Glasgow & Clyde
Highland	156,833	7,494	7,966	9,266	8,688	6,456	6,976	8,023	10,919	12,568	12,118	11,351	11,760	10,755	8,963	7,618	6,412	4,832	2,986	1,682	Highland
Lanarkshire	290,810	15,747	15,882	17,047	17,540	17,530	16,754	17,244	22,417	23,741	22,201	19,743	18,622	16,611	14,227	12,634	10,239	7,089	4,053	2,089	Lanarkshire
Lothian	419,376	20,810	20,595	21,579	24,555	33,495	32,674	28,916	32,228	32,855	30,106	25,414	24,653	21,843	17,829	16,184	14,239	10,867	6,834	3,700	Lothian
Orkney	10,081	467	473	654	599	406	462	500	704	807	749	755	733	701	618	457	398	270	213	115	Orkney
Shetland	10,913	600	653	726	692	429	553	707	800	829	827	765	711	663	536	433	367	294	212	116	Shetland
Tayside	204,459	9,901	9,957	11,199	12,204	13,097	10,972	10,385	13,747	15,520	14,992	13,498	13,561	12,798	10,878	9,867	8,705	6,918	4,040	2,220	Tayside
Western Isles	13,378	664	665	813	735	457	588	699	914	977	942	914	949	899	805	726	605	491	356	179	Western Isles

Table 4 Components of population change by administrative area: 2006-2007

	Estimated population 30 June 2006	Births	Deaths	Natural change	Estimated ¹ net civilian migration	Other ² changes	Estimated population 30 June 2007	Population change	
								Number	%
SCOTLAND	5,116,900	56,726	55,650	1,076	26,811	-587	5,144,200	27,300	0.5
Council areas									
Aberdeen City	206,880	2,337	2,128	209	2,190	-19	209,260	2,380	1.2
Aberdeenshire	236,260	2,653	2,183	470	2,441	-11	239,160	2,900	1.2
Angus	109,320	1,144	1,260	-116	652	14	109,870	550	0.5
Argyll & Bute	91,390	783	1,120	-337	347	-50	91,350	-40	0.0
Clackmannanshire	48,900	551	473	78	696	226	49,900	1,000	2.0
Dumfries & Galloway	148,030	1,503	1,804	-301	574	-3	148,300	270	0.2
Dundee City	142,170	1,608	1,561	47	-67	0	142,150	-20	0.0
East Ayrshire	119,290	1,326	1,357	-31	301	10	119,570	280	0.2
East Dunbartonshire	105,460	870	996	-126	-266	-218	104,850	-610	-0.6
East Lothian	92,830	1,057	1,018	39	1,571	0	94,440	1,610	1.7
East Renfrewshire	89,290	875	862	13	-43	0	89,260	-30	0.0
Edinburgh, City of	463,510	4,920	4,208	712	3,626	222	468,070	4,560	1.0
Eilean Siar	26,350	279	368	-89	39	0	26,300	-50	-0.2
Falkirk	149,680	1,834	1,611	223	755	62	150,720	1,040	0.7
Fife	358,930	3,982	3,924	58	1,682	-170	360,500	1,570	0.4
Glasgow City	580,690	6,923	7,087	-164	1,557	-143	581,940	1,250	0.2
Highland	215,310	2,251	2,406	-155	2,351	-66	217,440	2,130	1.0
Inverclyde	81,540	861	1,004	-143	-315	-2	81,080	-460	-0.6
Midlothian	79,290	907	786	121	99	0	79,510	220	0.3
Moray	86,750	942	948	-6	556	-430	86,870	120	0.1
North Ayrshire	135,490	1,504	1,600	-96	366	0	135,760	270	0.2
North Lanarkshire	323,780	4,039	3,486	553	323	24	324,680	900	0.3
Orkney Islands	19,770	188	233	-45	135	0	19,860	90	0.5
Perth & Kinross	140,190	1,367	1,633	-266	2,181	35	142,140	1,950	1.4
Renfrewshire	169,590	1,865	1,915	-50	60	0	169,600	10	0.0
Scottish Borders	110,240	1,128	1,300	-172	1,362	0	111,430	1,190	1.1
Shetland Islands	21,880	261	217	44	26	0	21,950	70	0.3
South Ayrshire	111,670	1,028	1,415	-387	457	-50	111,690	20	0.0
South Lanarkshire	307,670	3,488	3,333	155	1,675	0	309,500	1,830	0.6
Stirling	87,810	927	888	39	359	-18	88,190	380	0.4
West Dunbartonshire	91,240	1,077	1,132	-55	-95	0	91,090	-150	-0.2
West Lothian	165,700	2,248	1,394	854	1,216	0	167,770	2,070	1.2
NHS Board areas									
Ayrshire & Arran	366,450	3,858	4,372	-514	1,124	-40	367,020	570	0.2
Borders	110,247	1,128	1,300	-172	1,355	0	111,430	1,183	1.1
Dumfries & Galloway	148,030	1,503	1,804	-301	574	-3	148,300	270	0.2
Fife	358,858	3,982	3,924	58	1,682	-170	360,428	1,570	0.4
Forth Valley	286,053	3,312	2,981	331	1,819	270	288,473	2,420	0.8
Grampian	529,889	5,932	5,259	673	5,188	-460	535,290	5,401	1.0
Greater Glasgow & Clyde	1,191,584	13,406	13,794	-388	1,586	-363	1,192,419	835	0.1
Highland	306,701	3,034	3,526	-492	2,697	-116	308,790	2,089	0.7
Lanarkshire	558,139	6,597	6,022	575	1,304	24	560,042	1,903	0.3
Lothian	801,310	9,129	7,407	1,722	6,510	222	809,764	8,454	1.1
Orkney	19,770	188	233	-45	135	0	19,860	90	0.5
Shetland	21,880	261	217	44	26	0	21,950	70	0.3
Tayside	391,639	4,117	4,443	-326	2,772	49	394,134	2,495	0.6
Western Isles	26,350	279	368	-89	39	0	26,300	-50	-0.2

¹ Includes movements to/from armed forces

² Includes changes in the number of prisoners and armed forces stationed in Scotland.

Table 5 Components of migration by administrative area: 2006-2007

	In-migration				Out-migration				Net-migration			
	Total ²	within Scotland	Rest of UK ¹	Overseas	Total ²	within Scotland	Rest of UK ¹	Overseas	Total ³	within Scotland	Rest of UK ¹	Overseas
SCOTLAND	91,768	n/a	53,968	37,800	64,957	n/a	43,957	21,000	26,811	0	10,011	16,800
Council areas												
Aberdeen City	12,860	5,752	2,695	4,413	10,674	6,860	2,337	1,477	2,186	-1,108	358	2,936
Aberdeenshire	9,917	5,990	2,629	1,298	7,473	4,918	1,777	778	2,444	1,072	852	520
Angus	4,205	2,981	863	361	3,557	2,569	695	293	648	412	168	68
Argyll & Bute	4,302	2,220	1,637	445	3,955	2,427	1,103	425	347	-207	534	20
Clackmannanshire	2,274	1,599	465	210	1,579	1,185	275	119	695	414	190	91
Dumfries & Galloway	4,654	1,728	2,516	410	4,077	1,785	1,756	536	577	-57	760	-126
Dundee City	6,442	3,626	1,298	1,518	6,508	4,202	1,568	738	-66	-576	-270	780
East Ayrshire	3,708	2,742	826	140	3,409	2,503	658	248	299	239	168	-108
East Dunbartonshire	3,515	2,916	413	186	3,779	3,077	524	178	-264	-161	-111	8
East Lothian	4,410	3,266	832	312	2,836	2,069	575	192	1,574	1,197	257	120
East Renfrewshire	3,271	2,850	311	110	3,311	2,659	488	164	-40	191	-177	-54
Edinburgh, City of	28,235	11,165	8,601	8,469	24,611	13,308	7,712	3,591	3,624	-2,143	889	4,878
Eilean Siar	1,026	588	355	83	983	640	255	88	43	-52	100	-5
Falkirk	4,468	3,145	787	536	3,714	2,596	739	379	754	549	48	157
Fife	11,897	6,099	3,893	1,905	10,214	5,835	3,102	1,277	1,683	264	791	628
Glasgow City ⁴	27,977	13,981	6,103	7,893	26,421	16,654	5,766	4,001	1,556	-2,673	337	3,892
Highland	9,472	4,164	3,833	1,475	7,117	4,102	2,141	874	2,355	62	1,692	601
Inverclyde	1,647	1,064	397	186	1,965	1,326	442	197	-318	-262	-45	-11
Midlothian	2,978	2,358	435	185	2,881	2,353	392	136	97	5	43	49
Moray	3,612	1,559	1,628	425	3,061	1,710	1,021	330	551	-151	607	95
North Ayrshire	4,358	3,099	1,037	222	3,993	2,782	871	340	365	317	166	-118
North Lanarkshire	7,967	5,671	1,330	966	7,639	5,507	1,302	830	328	164	28	136
Orkney Islands	736	363	328	45	605	380	165	60	131	-17	163	-15
Perth & Kinross	7,285	3,767	1,810	1,708	5,101	3,273	1,167	661	2,184	494	643	1,047
Renfrewshire	5,132	3,456	916	760	5,075	3,702	901	472	57	-246	15	288
Scottish Borders	5,091	2,589	1,969	533	3,728	2,044	1,249	435	1,363	545	720	98
Shetland Islands	773	365	345	63	746	467	207	72	27	-102	138	-9
South Ayrshire	3,916	2,633	1,016	267	3,456	2,297	802	357	460	336	214	-90
South Lanarkshire	9,323	6,876	1,841	606	7,648	5,507	1,489	652	1,675	1,369	352	-46
Stirling	5,070	2,998	1,223	849	4,712	3,344	909	459	358	-346	314	390
West Dunbartonshire	2,464	1,810	471	183	2,560	1,931	460	169	-96	-121	11	14
West Lothian	6,530	4,327	1,165	1,038	5,316	3,735	1,109	472	1,214	592	56	566
NHS Board areas												
Ayrshire & Arran	9,114	5,606	2,879	629	7,991	4,715	2,331	945	1,123	891	548	-316
Borders	5,091	2,591	1,967	533	3,728	2,044	1,249	435	1,363	547	718	98
Dumfries & Galloway	4,654	1,728	2,516	410	4,076	1,784	1,756	536	578	-56	760	-126
Fife	11,897	6,099	3,893	1,905	10,214	5,835	3,102	1,277	1,683	264	791	628
Forth Valley	10,057	5,984	2,477	1,596	8,241	5,366	1,918	957	1,816	618	559	639
Grampian	19,546	6,458	6,952	6,136	14,365	6,645	5,135	2,585	5,181	-187	1,817	3,551
Greater Glasgow & Clyde ⁴	32,492	14,110	8,957	9,425	30,914	16,702	8,921	5,291	1,578	-2,592	36	4,134
Highland	13,443	6,053	5,470	1,920	10,737	6,194	3,244	1,299	2,706	-141	2,226	621
Lanarkshire	12,476	8,184	2,827	1,465	11,167	7,339	2,456	1,372	1,309	845	371	93
Lothian	32,954	11,917	11,033	10,004	26,453	12,274	9,788	4,391	6,501	-357	1,245	5,613
Orkney	736	363	328	45	605	380	165	60	131	-17	163	-15
Shetland	773	365	345	63	746	467	207	72	27	-102	138	-9
Tayside	14,246	6,691	3,969	3,586	11,474	6,352	3,430	1,692	2,772	339	539	1,894
Western Isles	1,026	588	355	83	983	640	255	88	43	-52	100	-5

¹ The number of moves between Scotland and the rest of the UK shown here differ from those quoted elsewhere.

This is because movements to/from the armed forces are included in these figures but are excluded from the others.

² The total in- and out-migration figures for Scotland equal the sum of migration from / to the rest of the UK and overseas but do not equal the sum of moves for individual Council or NHS Board areas. This is because migration for individual Council and NHS Board areas includes moves within Scotland. Since such moves do not involve anyone leaving or entering Scotland, they are not counted in the Scotland totals.

³ Figures in this column have not been rounded and so may differ slightly from those in table 4.

⁴ Includes asylum seekers

Table 6 Components of population change by administrative area: 2001-2007

	Estimated population 30 June 2001	Births	Deaths	Natural change	Estimated ¹ net civilian migration	Other ² changes	Estimated population 30 June 2007	Population change	
								Number	%
SCOTLAND	5,064,200	322,553	340,657	-18,104	98,412	-308	5,144,200	80,000	1.6
Council areas									
Aberdeen City	211,910	12,681	12,915	-234	-2,404	-12	209,260	-2,650	-1.3
Aberdeenshire	226,940	14,596	12,779	1,817	10,654	-251	239,160	12,220	5.4
Angus	108,370	6,499	7,903	-1,404	3,291	-387	109,870	1,500	1.4
Argyll & Bute	91,300	4,608	6,813	-2,205	2,415	-160	91,350	50	0.1
Clackmannanshire	48,070	3,090	3,051	39	1,587	204	49,900	1,830	3.8
Dumfries & Galloway	147,780	8,362	11,119	-2,757	3,269	8	148,300	520	0.4
Dundee City	145,460	9,212	10,531	-1,319	-1,991	0	142,150	-3,310	-2.3
East Ayrshire	120,310	7,456	8,578	-1,122	313	69	119,570	-740	-0.6
East Dunbartonshire	108,250	5,536	5,914	-378	-2,828	-194	104,850	-3,400	-3.1
East Lothian	90,180	5,956	6,156	-200	4,460	0	94,440	4,260	4.7
East Renfrewshire	89,410	5,410	5,180	230	-380	0	89,260	-150	-0.2
Edinburgh, City of	449,020	27,950	26,713	1,237	17,302	511	468,070	19,050	4.2
Eilean Siar	26,450	1,464	2,295	-831	681	0	26,300	-150	-0.6
Falkirk	145,270	10,044	9,781	263	5,179	8	150,720	5,450	3.8
Fife	349,770	22,503	23,160	-657	10,657	730	360,500	10,730	3.1
Glasgow City	578,710	39,940	44,030	-4,090	7,300	20	581,940	3,230	0.6
Highland	208,920	12,875	14,168	-1,293	9,856	-43	217,440	8,520	4.1
Inverclyde	84,150	5,082	6,443	-1,361	-1,726	17	81,080	-3,070	-3.6
Midlothian	80,950	5,227	5,000	227	-1,567	-100	79,510	-1,440	-1.8
Moray	87,000	5,243	5,725	-482	1,132	-780	86,870	-130	-0.1
North Ayrshire	135,820	8,503	9,696	-1,193	1,133	0	135,760	-60	0.0
North Lanarkshire	321,180	23,172	20,820	2,352	1,002	146	324,680	3,500	1.1
Orkney Islands	19,220	1,087	1,294	-207	847	0	19,860	640	3.3
Perth & Kinross	134,950	7,810	9,683	-1,873	9,088	-25	142,140	7,190	5.3
Renfrewshire	172,850	10,999	12,079	-1,080	-2,170	0	169,600	-3,250	-1.9
Scottish Borders	106,950	6,415	8,028	-1,613	6,093	0	111,430	4,480	4.2
Shetland Islands	21,960	1,444	1,248	196	-174	-32	21,950	-10	0.0
South Ayrshire	112,160	5,982	8,617	-2,635	2,265	-100	111,690	-470	-0.4
South Lanarkshire	302,340	19,636	20,053	-417	7,577	0	309,500	7,160	2.4
Stirling	86,200	5,281	5,349	-68	1,995	63	88,190	1,990	2.3
West Dunbartonshire	93,320	5,996	6,852	-856	-1,374	0	91,090	-2,230	-2.4
West Lothian	159,030	12,494	8,684	3,810	4,930	0	167,770	8,740	5.5
NHS Board areas									
Ayrshire & Arran	368,290	21,941	26,891	-4,950	3,711	-31	367,020	-1,270	-0.3
Borders	106,950	6,412	8,026	-1,614	6,094	0	111,430	4,480	4.2
Dumfries & Galloway	147,780	8,362	11,119	-2,757	3,269	8	148,300	520	0.4
Fife	349,690	22,503	23,160	-657	10,665	730	360,428	10,738	3.1
Forth Valley	279,240	18,411	18,227	184	8,774	275	288,473	9,233	3.3
Grampian	525,850	32,520	31,419	1,101	9,382	-1,043	535,290	9,440	1.8
Greater Glasgow & Clyde	1,197,570	78,073	85,469	-7,396	2,402	-157	1,192,419	-5,151	-0.4
Highland	300,220	17,483	20,981	-3,498	12,271	-203	308,790	8,570	2.9
Lanarkshire	553,230	37,721	35,912	1,809	4,857	146	560,042	6,812	1.2
Lothian	779,000	51,619	46,556	5,063	25,290	411	809,764	30,764	3.9
Orkney	19,220	1,087	1,294	-207	847	0	19,860	640	3.3
Shetland	21,960	1,444	1,248	196	-174	-32	21,950	-10	0.0
Tayside	388,750	23,513	28,060	-4,547	10,343	-412	394,134	5,384	1.4
Western Isles	26,450	1,464	2,295	-831	681	0	26,300	-150	-0.6

¹ Includes movements to/from armed forces.

² Includes changes in the number of armed forces stationed in Scotland.

Table 7 Components of population change by administrative area: 1997-2007

	Estimated population 30 June 1997	Births	Deaths	Natural change	Estimated ¹ net civilian migration and other changes	Estimated population 30 June 2007	Population change	
							Number	%
SCOTLAND	5,083,340	543,958	575,879	-31,921	92,781	5,144,200	60,860	1.2
Council areas								
Aberdeen City	217,300	21,690	21,898	-208	-7,832	209,260	-8,040	-3.7
Aberdeenshire	226,020	24,439	21,120	3,319	9,821	239,160	13,140	5.8
Angus	110,000	10,993	13,294	-2,301	2,171	109,870	-130	-0.1
Argyll & Bute	91,720	7,964	11,658	-3,694	3,324	91,350	-370	-0.4
Clackmannanshire	48,560	5,193	5,142	51	1,289	49,900	1,340	2.8
Dumfries & Galloway	148,520	14,076	18,343	-4,267	4,047	148,300	-220	-0.1
Dundee City	151,350	15,388	18,084	-2,696	-6,504	142,150	-9,200	-6.1
East Ayrshire	121,440	12,633	14,616	-1,983	113	119,570	-1,870	-1.5
East Dunbartonshire	109,280	9,788	9,886	-98	-4,332	104,850	-4,430	-4.1
East Lothian	87,730	9,925	10,329	-404	7,114	94,440	6,710	7.6
East Renfrewshire	87,890	9,311	8,519	792	578	89,260	1,370	1.6
Edinburgh, City of	445,720	46,960	46,226	734	21,616	468,070	22,350	5.0
Eilean Siar	27,910	2,467	3,835	-1,368	-242	26,300	-1,610	-5.8
Falkirk	143,340	16,398	16,273	125	7,255	150,720	7,380	5.1
Fife	346,540	37,248	38,930	-1,682	15,642	360,500	13,960	4.0
Glasgow City	590,660	67,651	76,595	-8,944	224	581,940	-8,720	-1.5
Highland	208,560	21,971	23,854	-1,883	10,763	217,440	8,880	4.3
Inverclyde	86,460	8,748	11,063	-2,315	-3,065	81,080	-5,380	-6.2
Midlothian	79,550	9,039	8,395	644	-684	79,510	-40	-0.1
Moray	87,160	9,125	9,435	-310	20	86,870	-290	-0.3
North Ayrshire	137,690	14,379	16,288	-1,909	-21	135,760	-1,930	-1.4
North Lanarkshire	322,510	38,735	34,846	3,889	-1,719	324,680	2,170	0.7
Orkney Islands	19,770	1,805	2,174	-369	459	19,860	90	0.5
Perth & Kinross	133,980	13,296	16,115	-2,819	10,979	142,140	8,160	6.1
Renfrewshire	175,800	18,983	20,345	-1,362	-4,838	169,600	-6,200	-3.5
Scottish Borders	105,960	10,644	13,268	-2,624	8,094	111,430	5,470	5.2
Shetland Islands	22,830	2,487	2,107	380	-1,260	21,950	-880	-3.9
South Ayrshire	113,620	10,350	14,442	-4,092	2,162	111,690	-1,930	-1.7
South Lanarkshire	304,440	32,808	33,644	-836	5,896	309,500	5,060	1.7
Stirling	84,050	8,871	9,032	-161	4,301	88,190	4,140	4.9
West Dunbartonshire	95,200	10,241	11,556	-1,315	-2,795	91,090	-4,110	-4.3
West Lothian	151,780	20,352	14,567	5,785	10,205	167,770	15,990	10.5
NHS Board areas								
Ayrshire & Arran	372,750	37,362	45,346	-7,984	2,254	367,020	-5,730	-1.5
Borders	105,960	10,641	13,266	-2,625	8,095	111,430	5,470	5.2
Dumfries & Galloway	148,520	14,076	18,343	-4,267	4,047	148,300	-220	-0.1
Fife	346,540	37,248	38,930	-1,682	15,570	360,428	13,888	4.0
Forth Valley	275,950	30,458	30,493	-35	12,558	288,473	12,523	4.5
Grampian	530,480	55,254	52,453	2,801	2,009	535,290	4,810	0.9
Greater Glasgow & Clyde	1,215,700	132,959	146,487	-13,528	-9,753	1,192,419	-23,281	-1.9
Highland	300,280	29,935	35,512	-5,577	14,087	308,790	8,510	2.8
Lanarkshire	556,540	63,329	59,977	3,352	150	560,042	3,502	0.6
Lothian	764,780	86,268	79,520	6,748	38,236	809,764	44,984	5.9
Orkney	19,770	1,805	2,174	-369	459	19,860	90	0.5
Shetland	22,830	2,487	2,107	380	-1,260	21,950	-880	-3.9
Tayside	395,330	39,669	47,436	-7,767	6,571	394,134	-1,196	-0.3
Western Isles	27,910	2,467	3,835	-1,368	-242	26,300	-1,610	-5.8

¹ Includes movements to/from armed forces and changes in the number of armed forces stationed in Scotland.

Table 8 Age and sex structure of administrative areas: 30 June 2007

	Males				Females			
	Average Age ¹	% under 16	% working age	% pension - able age ²	Average Age ¹	% under 16	% working age	% pension - able age ²
SCOTLAND	39	19	67	14	41	17	59	24
Council areas								
Aberdeen City	39	17	70	13	42	15	62	23
Aberdeenshire	39	20	66	14	41	19	58	23
Angus	40	19	64	17	43	17	55	28
Argyll & Bute	41	17	65	18	44	17	53	30
Clackmannanshire	39	20	67	14	41	18	58	23
Dumfries & Galloway	42	18	63	19	44	16	54	30
Dundee City	39	18	66	16	41	15	59	26
East Ayrshire	39	19	66	15	42	17	58	25
East Dunbartonshire	39	20	65	16	43	17	57	26
East Lothian	39	21	63	16	42	19	56	26
East Renfrewshire	39	22	64	15	42	19	56	25
Edinburgh, City of	37	16	71	12	40	14	64	22
Eilean Siar	41	18	65	18	44	17	52	30
Falkirk	38	20	66	14	41	18	59	24
Fife	39	19	66	15	41	17	58	25
Glasgow City	36	18	71	12	39	16	63	21
Highland	40	19	65	16	43	17	56	27
Inverclyde	39	19	66	14	42	16	57	26
Midlothian	39	21	65	15	41	18	58	24
Moray	39	19	66	15	41	18	55	27
North Ayrshire	39	20	65	16	42	17	57	26
North Lanarkshire	37	21	67	13	40	18	60	22
Orkney Islands	41	18	65	17	43	17	55	28
Perth & Kinross	41	18	64	17	44	17	55	28
Renfrewshire	39	19	67	14	41	17	59	24
Scottish Borders	41	19	64	18	43	17	55	28
Shetland Islands	39	20	66	14	41	19	57	24
South Ayrshire	41	18	64	18	44	16	55	30
South Lanarkshire	38	20	66	14	41	17	58	24
Stirling	38	20	65	15	41	17	58	24
West Dunbartonshire	38	20	67	13	41	17	59	24
West Lothian	37	22	67	11	39	20	61	20
NHS Board areas								
Ayrshire & Arran	40	19	65	16	42	17	57	27
Borders	41	19	64	18	43	17	55	28
Dumfries & Galloway	42	18	63	19	44	16	54	30
Fife	39	19	66	15	41	17	58	25
Forth Valley	39	20	66	14	41	18	59	24
Grampian	39	18	68	14	41	17	59	24
Greater Glasgow & Clyde	37	19	68	13	41	17	60	23
Highland	41	18	65	16	43	17	55	28
Lanarkshire	38	20	66	13	40	18	59	23
Lothian	38	18	69	13	40	16	62	22
Orkney	41	18	65	17	43	17	55	28
Shetland	39	20	66	14	41	19	57	24
Tayside	40	18	65	17	43	16	56	27
Western Isles	41	18	65	18	44	17	52	30

¹ The average is the arithmetic mean age of a population count for a particular area.

² Pensionable age is 65 for men and 60 for women.

³ The sex ratio is the male population divided by the female population.

Table 9 Rest of UK/Overseas moves by age group: 2006-2007

Movements between Scotland and the rest of the UK¹

	0-15		16-24		25-34		35-44		45-54		55-64		65-74		75-84		85+		All ages	
	No.	%	No.	%	No.	%	No.	%	No.	%	No.	%	No.	%	No.	%	No.	%	No.	%
IN	7,962	15	11,230	22	12,597	24	8,042	16	5,115	10	3,885	8	1,556	3	796	2	363	1	51,546	100
OUT	6,289	15	10,150	24	12,472	29	6,321	15	3,292	8	2,236	5	1,043	2	606	1	288	1	42,697	100
NET	1,673		1,080		125		1,721		1,823		1,649		513		190		75		8,849	

Movements between Scotland and Overseas (including asylum seekers)²

	0-15		16-24		25-34		35-44		45-54		55-64		65-74		75-84		85+		All ages	
	No.	%	No.	%	No.	%	No.	%	No.	%	No.	%	No.	%	No.	%	No.	%	No.	%
IN	5,681	15	12,456	33	13,155	35	3,709	10	1,661	4	721	2	289	1	100	0	28	0	37,800	100
OUT	3,034	14	4,963	24	6,349	30	3,165	15	1,572	7	1,032	5	483	2	268	1	134	1	21,000	100
NET	2,647		7,493		6,806		544		89		-311		-194		-168		-106		16,800	

Total net migration (including asylum seekers, rounding and unmeasured migration adjustments)³

	0-15		16-24		25-34		35-44		45-54		55-64		65-74		75-84		85+		All ages	
	No.	%	No.	%	No.	%	No.	%	No.	%	No.	%	No.	%	No.	%	No.	%	No.	%
NET	4,541		8,444		7,310		2,763		2,046		1,389		325		24		-31		26,811	

1. National Health Service Central Register (NHSCR) patient movements mid-2006 to mid-2007.

2. Totals are based primarily on International Passenger Survey (IPS) data. However, the sample size in Scotland is too small to give an age breakdown so an age distribution is assumed using NHSCR data.

3. Note that the movements between Scotland and the rest of the UK and overseas will not sum to the total net migration as they exclude movements to and from the armed forces and rounding adjustments.

* Pensionable age is 60 for women and 65 for men.

Table 10 Land area and population density, by administrative area: 30 June 2007

	Estimated population 30 June 2007	Area ¹ (sq km)	Persons ² per sq km
SCOTLAND	5,144,200	77,925	66
Council areas			
Aberdeen City	209,260	186	1,127
Aberdeenshire	239,160	6,313	38
Angus	109,870	2,182	50
Argyll & Bute	91,350	6,909	13
Clackmannanshire	49,900	159	315
Dumfries & Galloway	148,300	6,426	23
Dundee City	142,150	60	2,376
East Ayrshire	119,570	1,262	95
East Dunbartonshire	104,850	175	600
East Lothian	94,440	679	139
East Renfrewshire	89,260	174	514
Edinburgh, City of	468,070	264	1,775
Eilean Siar	26,300	3,071	9
Falkirk	150,720	297	507
Fife	360,500	1,325	272
Glasgow City	581,940	175	3,316
Highland	217,440	25,659	8
Inverclyde	81,080	160	505
Midlothian	79,510	354	225
Moray	86,870	2,238	39
North Ayrshire	135,760	885	153
North Lanarkshire	324,680	470	691
Orkney Islands	19,860	990	20
Perth & Kinross	142,140	5,286	27
Renfrewshire	169,600	261	650
Scottish Borders	111,430	4,732	24
Shetland Islands	21,950	1,466	15
South Ayrshire	111,690	1,222	91
South Lanarkshire	309,500	1,772	175
Stirling	88,190	2,187	40
West Dunbartonshire	91,090	159	573
West Lothian	167,770	427	393
NHS Board areas			
Ayrshire & Arran	367,020	3,377	109
Borders	111,430	4,732	24
Dumfries & Galloway	148,300	6,426	23
Fife	360,428	1,325	272
Forth Valley	288,473	2,633	110
Grampian	535,290	8,736	61
Greater Glasgow & Clyde	1,192,419	1,151	1,036
Highland	308,790	32,568	9
Lanarkshire	560,042	2,181	257
Lothian	809,764	1,760	460
Orkney	19,860	990	20
Shetland	21,950	1,466	15
Tayside	394,134	7,508	52
Western Isles	26,300	3,071	9

¹ See note on page 34. Figures may not add exactly because of rounding.

² Persons per sq km has been calculated using actual, not rounded areas.

6. Notes and Definitions

Population Covered

The estimated population of an area includes all those usually resident there, whatever their nationality. Students are treated as being resident at their term-time address. Members of UK and non-UK armed forces stationed in Scotland are included; UK forces stationed outside Scotland are excluded. Short-term international migrants are excluded.

Age

Population figures relate to 30 June of the year shown and ages relate to age last birthday.

Presentation of Results

Although the populations are tabulated in units, this does not imply accuracy to that level. The data are presented in units for the convenience of users wishing to compile non-standard aggregations without encountering rounding problems.

Administrative Areas

The composition of the NHS Board areas in terms of Council areas is summarised in the table below. From 1 April 2006 responsibility for NHS Argyll & Clyde was split between NHS Greater Glasgow (now known as Greater Glasgow and Clyde) and NHS Highland. The tables presented in this report present information for the new NHS Board areas.

Composition of NHS Board areas

NHS Board area	Council area
Ayrshire & Arran	East Ayrshire, North Ayrshire, South Ayrshire
Borders	Scottish Borders
Dumfries & Galloway	Dumfries & Galloway
Fife	Fife
Forth Valley	Clackmannanshire, Falkirk (part), Stirling (part), Perth & Kinross (part)
Grampian	Aberdeen City, Aberdeenshire, Moray
Greater Glasgow & Clyde ¹	East Dunbartonshire, East Renfrewshire, Glasgow City, Inverclyde, North Lanarkshire (part), Renfrewshire, South Lanarkshire (part), Stirling (part), West Dunbartonshire
Highland ¹	Highland, Argyll & Bute
Lanarkshire	North Lanarkshire (part), South Lanarkshire (part), West Lothian (part), Falkirk (part)
Lothian	East Lothian, City of Edinburgh, Midlothian, West Lothian (part), Falkirk (part)
Orkney	Orkney Islands
Shetland	Shetland Islands
Tayside	Angus, Dundee City, Perth & Kinross (part)
Western Isles	Eilean Siar

¹ New NHS Board areas including parts of former Argyll & Clyde.

Note: In practice there are some other very small "slivers" where NHS Board and Council area boundaries cross.

Land Area

The land areas used to calculate the population density information presented in Table 9 were derived from digital boundaries used for the 2001 Census.

Sources of migration data

Migration is the most difficult component of population change to estimate, as there is no comprehensive system which registers migration in the UK – either moves to or from the rest of the world, or moves within the UK. Estimates of migration have therefore to be based on survey data and the best proxy data that exist.

Migration estimates are derived from three key sources of data. The National Health Service Central Register (NHSCR) is used to calculate moves between NHS Board areas within the UK, with migration at Council area and below estimated using anonymised data from the Community Health Index (CHI). The International Passenger Survey (IPS) provides information on moves into and out of Scotland with an origin or destination of outside the UK. In addition to IPS data, additional information is used for migrants to and from the Republic of Ireland and asylum seekers. These three main sources are described in more detail below.

Internal migration

The NHSCR system records the movements of patients between NHS health board areas in the UK. Each time a patient transfers to a new NHS doctor in a different health board area, the NHSCR is notified and then the patient is considered to have made a migrant move. Counts of these re-registrations are used as a proxy indicator for moves within the UK.

The CHI holds records of people registered with an NHS doctor in Scotland. Unlike the NHSCR, the records provided to GROS contain the postcode of the patient's address, which enables migration to be estimated for councils, and for smaller areas. The approach used for estimating council-level migration involves matching CHI patient records extracted from a database which reflects the 'live' CHI system on two occasions one year apart.

Currently, GROS migration data derived from the NHSCR is considered to be the most reliable data available at health board level, so estimates from the CHI are controlled to ensure that they are consistent with the NHSCR data for moves across a health board boundary by origin, destination, age and sex.

International migration

An international migrant is defined by the United Nations (UN) as someone who changes their country of residence for 12 months or more. There is not a single, all-inclusive system in place to measure all movements of population into and out of the UK. Therefore, it is necessary to use a combination of data from different sources that have different characteristics and attributes in order to produce estimates of international migration. While offering the best data currently available none of the data sources used are specifically designed to capture information solely on international migration.

Three sources of data are used to compile the National Statistics estimates of international migration into Scotland:

- The International Passenger Survey (IPS) is a continuous sample survey conducted by the Office for National Statistics at the principal air, sea and Channel Tunnel routes between the United Kingdom and countries outside the British Isles. It is the prime source of migration data to and from the UK providing estimates of both inflows and outflows, but does not cover all migration types
- Home Office, which provides data on asylum seekers and their dependants
- Irish Central Statistics Office, which provides estimates of migration of all citizenships between the UK and the Irish Republic

Given that the IPS collects information on intentions which may or may not be realised, an adjustment is made to the IPS data for visitor and migrant switchers (people who change their intentions and their migratory status). The Total International Migration (TIM) estimate is derived by combining these components.

The IPS provides an estimate of international migrants into the United Kingdom. The allocation of these migrants to Scotland is based on the Labour Force Survey. This provides more reliable data on the geographical distribution of immigrants than the destination provided in the IPS as it is based on where migrants actually live rather than on their initial intentions. The outflow of international migrants from Scotland is based directly on the IPS data. More information on the TIM method can be found in the Office for National Statistics (ONS) publication Total International Migration 2006 which is available on their website through the following link:

<http://www.statistics.gov.uk/cci/nugget.asp?id=260>

The TIM estimate for Scotland was used for the first time in the 2007 mid-year estimates for Scotland. Previously, GROS used a similar method based on the IPS, but this did not use the Labour Force Survey distribution or include estimates of migrant switchers. It did however use an adjustment for unmeasured migration. The results of the 2001 Census indicated that the previously published 2000 mid-year estimates had been overestimated as a result of cumulative errors in estimating migration. To ensure that migration estimates did not continue to be overestimated, an unmeasured migration adjustment was included. The TIM methodology does not include this adjustment. Rather the assumption is that, since the census and estimates are calculated using different methodologies, differences inevitably arise. An evaluation of the impact of changing method has been carried out. The conclusion was that the GROS method estimated a net migration gain around 9,700 higher than the TIM method between the census and the 2006 estimates. There are currently no plans to revise the previous mid-year estimates.

Distribution of International Migrants to Scotland

International migration flows to NHS Boards were allocated by using overseas inflows recorded on the NHSCR. However, NHSCR records hold limited data on international outflows from NHS Boards to overseas as patients rarely de-register with their doctor when moving overseas. As a result international outflows were allocated using averaged proportions based on international inflows, outflows to the rest of the UK and the

population size of each Health Board. This is an improvement on the method used last year when the limited NHSCR data on international outflows was used in combination with moves from Scotland to the rest of the UK.

Age and sex distributions of international in-migrants are obtained directly from the NHSCR. The age/sex distribution of moves for international out-migrants was based on the distribution of migrants to the rest of the UK, as recorded by the NHSCR.

Distribution of migrants to Council areas is based on the Community Health Index (CHI) records, controlled to the NHSCR geographic & age / sex distributions. International in-migrants were allocated using records appearing on the CHI extract but where the patient had arrived from overseas and international out-migrants were allocated using a combination of in-migrants to Scotland from overseas and migrants leaving Scotland for the rest of the UK.

Work to improve the method used to allocate international out-migrants to NHS Board and Council areas is continuing and further improvements will be considered for future publications.

Research into improving Migration and Population Statistics

It is increasingly important to have high quality statistics on migration and the population, for policy development and for planning and providing public services. Achieving this aim is challenging in the context of increasingly complex lifestyles and changes in migration to and from the UK over the last decade.

It has long been recognised that international migration is one of the most difficult components of population change to measure accurately. Large numbers of people travel into and out of the UK every year although migration numbers can be very different between one part of the country and another. There is no single, comprehensive source which can provide the information, at national and local levels, that is required for statistical purposes.

It was in this context that the National Statistician, set up the Inter-Departmental Task Force on Migration Statistics to make recommendations on timely improvements that could be made to estimates of migration and migrant populations in the United Kingdom, both nationally and at a local level. The report of the Inter-Departmental Task Force on Migration Statistics was published on 15 December 2006 by the Office for National Statistics. The General Register Office for Scotland represented the devolved administrations on this task force, and is working with the ONS on the implementation of the recommendations.

The Office for National Statistics is taking forward the recommendations of the 2006 Interdepartmental Task Force on Migration Statistics, through the Improvements to Migration and Population Statistics (IMPS) work which is a cross-government programme.

The IMPS workplan involves:

- Improving the data available on numbers entering and leaving the United Kingdom;
- Making effective use of new and existing administrative and survey data sources;
- Improving local population estimates and projections used in allocating resources

- and developing services;
- Improving the public reporting of population and migration statistics;
 - Establishing a wider range of timely indicators and analysis to inform the evidence base on migration and its impacts on policy and public services.

The General Register Office for Scotland is involved in a number of workstreams within this programme with the aim of incorporating the research into their outputs. This work includes the investigation and development of administrative sources not currently used in the production of population estimates, such as data on students from the Higher Education Statistics Agency (HESA), the School Census, the Department for Work and Pensions (DWP) and HM Revenue and Customs (HMRC) data on benefits and employment. Improvements in the quality and efficiency of the system for using data from GP registrations are also being made.

Other areas of joint working include the estimation of short term migrant numbers for Scotland, a review of the method of allocation of international migrants to Council areas, the development of indicators of migration at local authority level and early indications of changes in population trends.

More detail on the IMPS programme is available from the following link on the ONS website

<http://www.statistics.gov.uk/about/data/methodology/specific/population/future/imps/updates/default.asp>)

7. Notes on Statistical Publications

ENQUIRIES ABOUT THIS PUBLICATION Enquiries should be addressed to: Statistics Customer Services, General Register Office for Scotland, Ladywell House, Edinburgh, EH12 7TF
Telephone: (0131) 314 4299, Fax: (0131) 314 4696, E-mail: customer@gro-scotland.gsi.gov.uk.

NATIONAL STATISTICS This is a National Statistics publication. It has been produced to high professional standards set out in the National Statistics Code of Practice and Release Practice Protocol (www.statistics.gov.uk/about_ns/cop/default.asp). These statistics undergo regular quality assurance reviews to ensure that they meet customer needs. They are produced free from any political interference.

THE GENERAL REGISTER OFFICE FOR SCOTLAND (GROS) GROS is the devolved Government department in Scotland responsible for the registration of births, marriages, civil partnerships, deaths, divorces and adoptions in Scotland. We are responsible for the Census of Population in Scotland which we use, with other sources of information, to produce population and household statistics. We make available important information for family history. Our website is www.gro-scotland.gov.uk/.

OTHER GROS STATISTICS Further detailed statistics produced by GROS are available from the statistics pages of the GROS website (www.gro-scotland.gov.uk/statistics/index.html). Statistics from the 2001 Census are on the Scotland's Census Results On-Line website (www.scrol.gov.uk) and on the Census section of the main website (www.gro-scotland.gov.uk/census/index.html).

Information about future publications is provided on the GROS website (www.gro-scotland.gov.uk/futurepb.html). If you would like to receive notification of forthcoming statistical publications, you can register your interest on The Scottish Government's ScotStat web site at www.scotland.gov.uk/Topics/Statistics/scotstat/Intro.

COMPLAINTS AND SUGGESTIONS If you are not satisfied with our service, please write to Kirsty MacLachlan, Head of Demography Division, Room 1/2/7, Ladywell House, Ladywell Road, Edinburgh, EH12 7TF, Telephone: (0131) 314 4242, E-mail: kirsty.maclachlan@gro-scotland.gsi.gov.uk.

We also welcome any comments or suggestions that would help us to improve our standards of service.

RELATED ORGANISATIONS

ORGANISATION	CONTACT
THE SCOTTISH GOVERNMENT (SG): The SG is responsible for a wide range of devolved functions. The aim of the statistical service in the SG is to provide relevant and reliable statistical information, analysis and advice that meets the needs of government, business and the people of Scotland	Office of the Chief Statistician, The Scottish Government, 3 rd Floor West Rear, St Andrews House, Edinburgh, EH1 3DG Telephone: (0131) 244 0442 Fax: (0131) 244 0335 E-mail: statistics.enquiries@scotland.gsi.gov.uk Website: www.scotland.gov.uk/Topics/Statistics
The OFFICE FOR NATIONAL STATISTICS (ONS) is responsible for producing a wide range of economic and social statistics. It also, for England and Wales, registers life events and holds the Census of Population.	Customer Contact Centre, Room 1.015, Office for National Statistics, Cardiff Road, Newport, NP10 8XG Telephone: 0845 601 3034 Minicom: 01633 812399 Fax: 01633 652747 E-mail: info@statistics.gsi.gov.uk Website: www.statistics.gov.uk
The NORTHERN IRELAND STATISTICS AND RESEARCH AGENCY (NISRA) is Northern Ireland's official statistics organisation. The Agency also has responsibility, in Northern Ireland, for the registration of births, marriages, adoptions and deaths and the Census of Population.	Northern Ireland Statistics and Research Agency, McAuley House, 2-14 Castle Street, Belfast, BT1 1SA Telephone 028 9034 8100 Fax 028 9034 8106 Website: www.nisra.gov.uk

© Crown Copyright. Brief extracts from the Crown Copyright material in General Register Office for Scotland publications may be reproduced provided the source is fully acknowledged.