



General Register Office
for
SCOTLAND
information about Scotland's people

Mid-2006 Population Estimates Scotland
Population estimates by sex, age and administrative
area

First published on 26 April 2007

Revised 27 July 2007

A National Statistics publication

National Statistics are produced to high professional standards set out in the National Statistics Code of Practice. They undergo regular quality assurance reviews to ensure that they meet customer needs. They are produced free from any political interference.

© Crown copyright 2007

Contents

Main Points	1
1. Background	2
2. The Population of Scotland.....	2
3. The Age and Sex Structure of the Population.....	4
4. Results for Administrative Areas.....	6
4.1 Population Change 2005-2006	6
4.2 Population Change 1996-2006	6
4.3 Sex and Age Structure of Administrative Areas in Scotland.....	10
5. Population Density.....	11
6. Notes and Definitions.....	31
7. Notes on Statistical Publications.....	35

List of Tables

Table 1 Estimated population by age and sex, Scotland: 30 June 2006.....	12
Table 2 Estimated population by sex, single year of age and administrative area: 30 June 2006.....	13
Table 3 Estimated population by sex, five year age group and administrative area: 30 June 2006.....	22
Table 4 Components of population change by administrative area: 2005-2006	25
Table 5 Components of population change by administrative area: 2001-2006	26
Table 6 Components of population change by administrative area: 1996-2006	27
Table 7 Age structure of administrative areas: 30 June 2006	28
Table 8 Rest of UK/Overseas moves by age group: 2005-2006.....	29
Table 9 Land area and population density, by administrative area: 30 June 2006	30

List of Figures

Figure 1 Estimated population of Scotland, 1951-2006	3
Figure 2 Natural change and net migration, 1951-2006.....	4
Figure 3 Estimated population by age and sex, 30 June 2006	5
Figure 4 The changing age structure of Scotland's population, 1996-2006	6
Figure 5a Percentage change in population, Council areas, 1996-2006 (Map)	7
Figure 5b Percentage change in population, Council areas, 1996-2006 (Chart)	8
Figure 6a Percentage change in population, NHS Board areas, 1996-2006 (Map)	9
Figure 6b Percentage change in population, NHS Board areas, 1996-2006 (Chart)	10
Figure 7 Age structure of Council areas, 30 June 2006 (% under 16, 16-64 and 65+)	11
Figure 8 Age structure of NHS Board areas, 30 June 2006 (% under 16, 16-64 and 65+)	11

Main Points

The key points in this publication are:-

- The estimated population of Scotland on 30 June 2006 was 5,116,900, a rise of 22,100 on the previous year;
- Between mid-2001 and mid-2006, Scotland's population increased by 1.0 per cent (+52,700) from 5.06 million to 5.12 million;
- Between mid-1996 and mid-2006, Scotland's population increased by 0.5 per cent (+24,710) from 5.09 million to 5.12 million;
- In the twelve months up to 30 June 2006, the number of deaths exceeded the number of births by 300 (compared with 2,300 the previous year). Compared with the previous year there were more births (+1.3 per cent) and fewer deaths (-2.3 per cent);
- Over the year there was a net migration gain of 21,200, including a net gain of 8,900 people from the rest of the UK and a net gain of 12,700 from overseas (including asylum seekers);
- Over the year 53,300 people came to Scotland from England, Wales and Northern Ireland and 44,400 left Scotland to go in the opposite direction. The net inflow of 8,900 is lower than the previous year's 12,500 net inflow reflecting fewer people coming to Scotland, while the number of people leaving Scotland to go to other parts of the UK remained the same as the previous year;
- The net inflow from overseas exceeded that from England, Wales and Northern Ireland. Over the year 42,200 people (including asylum seekers) came to Scotland from overseas and 29,500 left Scotland to go overseas. The net inflow of 12,700 is higher than the previous year's net inflow of 7,300 from overseas;
- For Council areas, Aberdeenshire, City of Edinburgh, Perth & Kinross and West Lothian had the largest percentage population increase at 1.2 per cent. Inverclyde had the largest percentage population decrease at 0.7 per cent, followed by East Dunbartonshire and Shetland Islands with percentage decreases of 0.5 per cent;
- For NHS Board areas, Lothian (+1.1 per cent), Orkney (+0.9 per cent), Grampian (+0.8 per cent) and Highland (+0.7 per cent) had the largest percentage population increases in 2005-06. There were population decreases in Shetland (-0.5 per cent), Dumfries & Galloway (-0.2 per cent), Ayrshire & Arran (-0.2 per cent) and Western Isles (-0.1 per cent);
- Population density was 66 persons per square kilometre for Scotland and ranged from 8 persons per square kilometre in Highland Council area to 3,309 persons per square kilometre in Glasgow City Council area.

1. Background

1.1 This paper summarises the Registrar General for Scotland's mid-2006 estimates of the population of Scotland and its administrative areas. Some relevant historical information and a table giving land areas and population densities are also presented.

1.2 These population estimates are produced using the demographic cohort component method. The estimates are based on the 2001 Census. Each year the population is 'aged on' one year (that is, the 0 year olds become 1 year olds, and so on), the number of births in the year are added, the number of deaths subtracted and adjustments are made for estimated migration and other changes in special populations. It is important to remember that while the number of births and deaths are considered to be almost complete, there is no comprehensive source of migration data for moves within Scotland, to the rest of the UK, or to the rest of the world. Estimates of migration are made using the best proxy sources available including health service patient registrations and survey information. Therefore, any error in the estimates is likely to be due to the migration estimates, particularly the international estimates. From 1 April 2006 responsibility for NHS Argyll & Clyde was split between NHS Greater Glasgow (now known as Greater Glasgow and Clyde) and NHS Highland. The tables presented in this report present information for the new NHS Board areas, but also show data for the relevant component parts of NHS Argyll & Clyde.

2. The Population of Scotland

2.1 The estimated population of Scotland on 30 June 2006 was 5,116,900, a rise of 22,100 on the previous year and an increase of 52,700 since mid-2001. In the twelve months to mid-2006, there was a net migration gain of 21,200, reflecting a net gain of 8,900 people from the rest of the UK, a net gain of 12,700 from overseas (including asylum seekers), an adjustment of -1,500 for unmeasured migration (see the notes and definitions section for more details) and a net gain of 1,100 movements to and from the armed forces. Other changes (including changes in the prison population, and changes in the number of armed forces stationed in Scotland) amounted to an increase of 1,200 people. Compared with the previous year there were more births (+1.3 per cent) and fewer deaths (-2.3 per cent). The number of deaths in the twelve months up to mid-2006 exceeded the number of births by 300, compared with 2,300 in the previous year.

2.2 The population increased for the fourth year in a row because more people came to Scotland than left. Around 53,300 people came to Scotland from England, Wales and Northern Ireland and 44,400 left Scotland to go in the opposite direction. The net inflow of 8,900 was lower than the previous year's 12,500 net inflow reflecting less people coming to Scotland, while the number of people leaving to go to the rest of the UK remained the same as the previous year.

2.3 The overseas net gain of 12,700 came from an inflow of 42,200 (including asylum seekers) and an outflow of 29,500. The net gain from overseas was higher than the previous year's net inflow of 7,300. Estimating international migration is particularly difficult as the estimate is based primarily on the International Passenger Survey (IPS) which is a sample survey conducted at main airports and ports across the UK, and the sample size for Scotland is very small (around 140 contacts in 2006). Internationally, a migrant is defined as someone who changes their country of usual residence for 12 months or more, therefore, short-term seasonal migrant workers will not be counted in the migration

estimates, and hence will not be counted in the mid-year population estimates. More details about the migration data sources and definitions used can be found in Section 6.

2.4 For comparison purposes it is better to look at a time frame of longer than one year, as population change tends to fluctuate from year to year, particularly for smaller areas. Between mid-2001 and mid-2006, Scotland's population increased by 1.0 per cent (+52,700) from 5.06 million to 5.12 million (Table 5). However, between mid-1996 and mid-2006, Scotland's population increased by 0.5 per cent (+24,710) from 5.09 million to 5.12 million (Table 6 and Figure 1). As shown by Figure 2, the main reason for the smaller increase over the longer period is that there was a negative net migration for the early years of the period 1996-2006. The natural change (births minus deaths) was also negative for most of this period, though the figure of -295 for the most recent year reflects the closest gap between births and deaths since 1997.

Figure 1 Estimated population of Scotland, 1951-2006

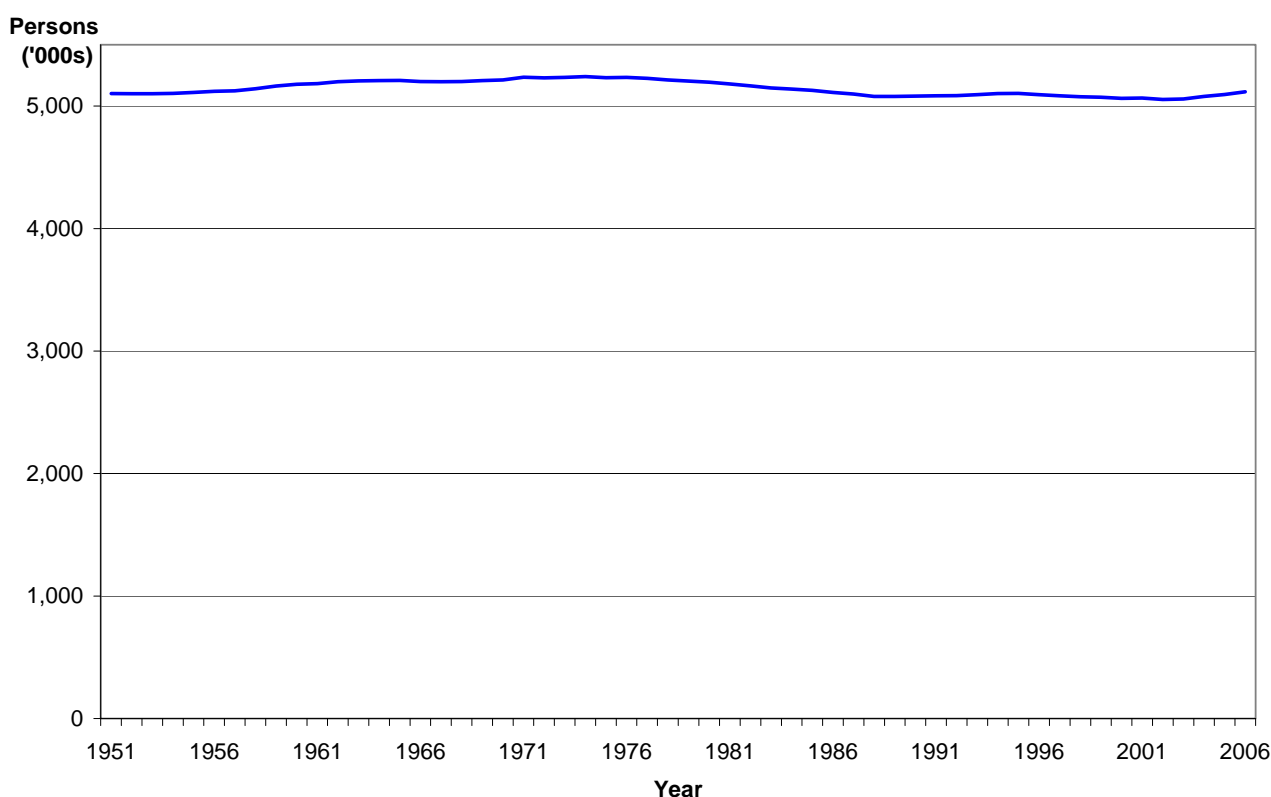
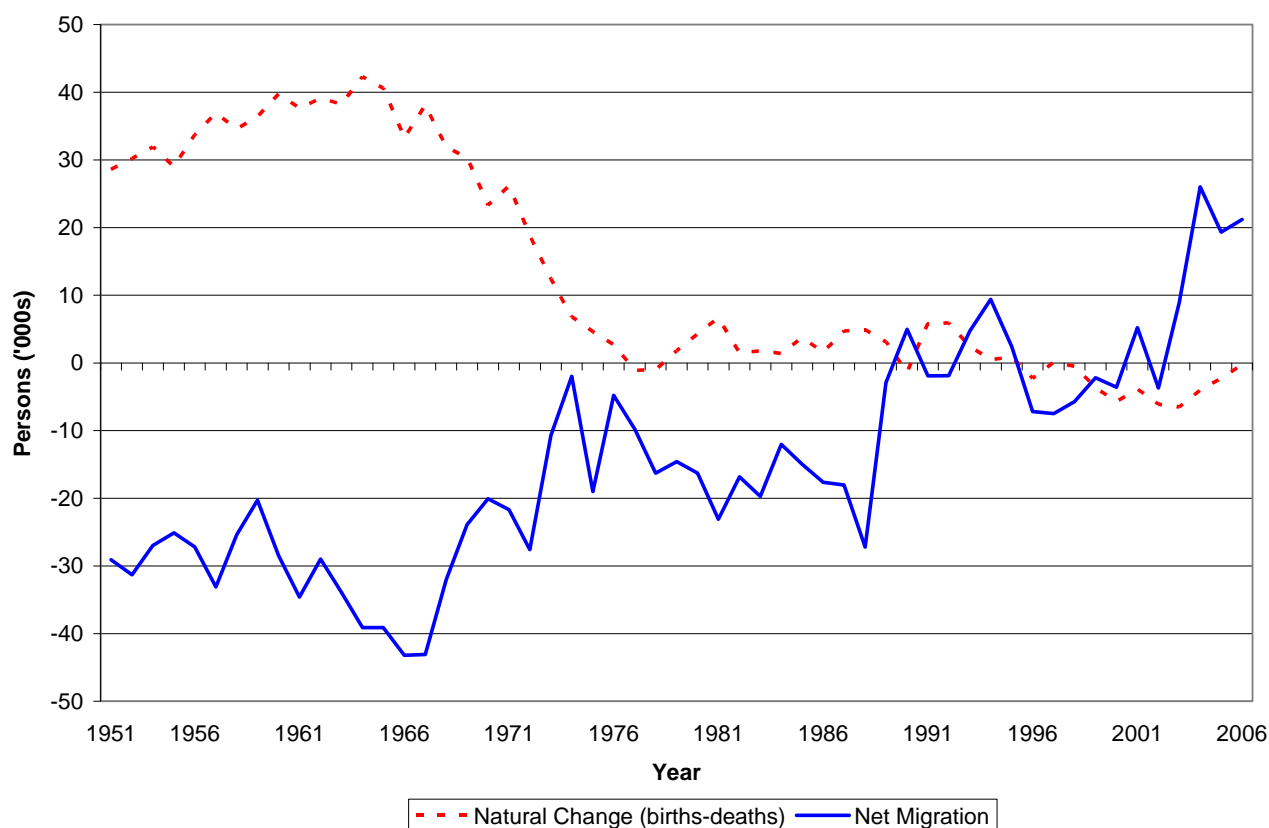


Figure 2 Natural change and net migration, 1951-2006



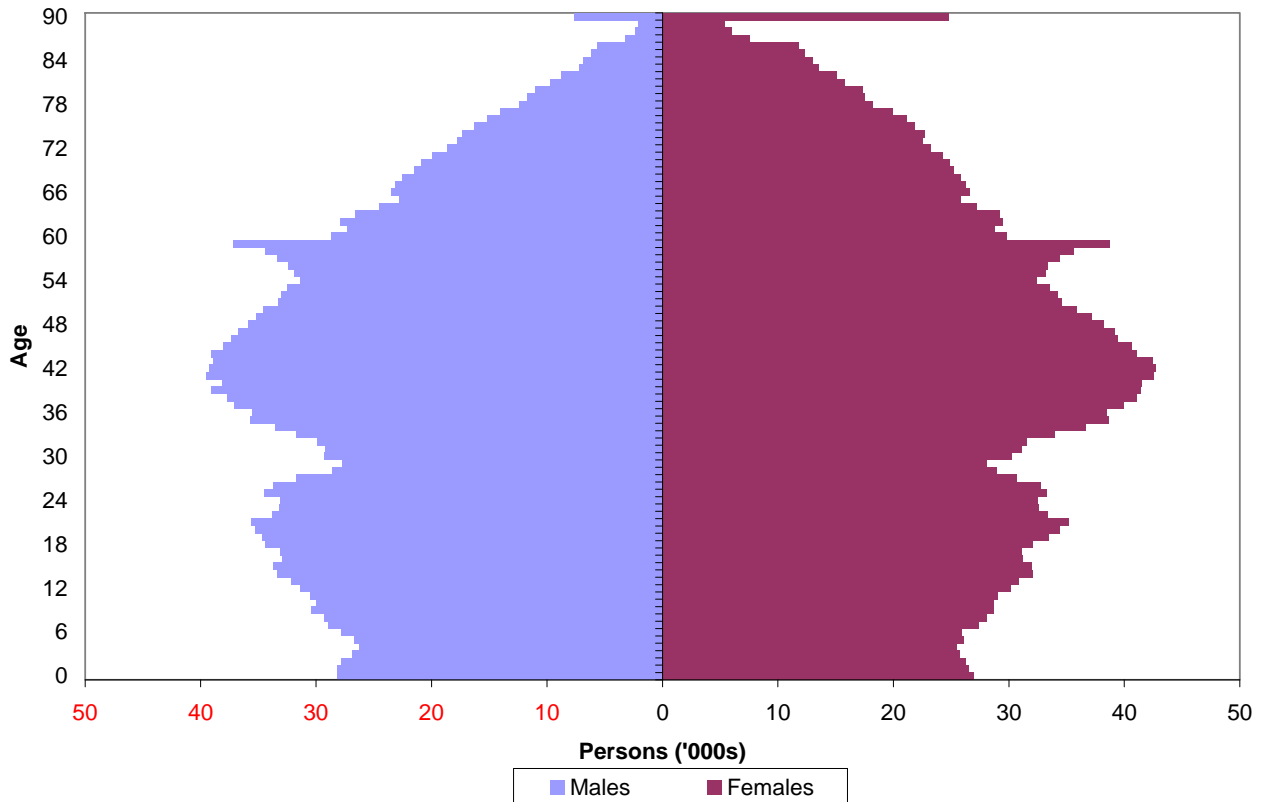
2.5 Table 8 shows movements to and from the UK and overseas between mid-2005 and mid-2006 by age group. The main source of data for the overseas migration calculations is the International Passenger Survey and as the sample size was small for Scotland (about 140) an age and sex distribution is assumed using information about GP registrations. The method used to estimate international migration is described in Section 6.

2.6 Migrants tend to be younger than the general population. For in-migrants to Scotland, 48 per cent of those from the rest of the UK and 69 per cent of those from overseas were aged 16-34 years, compared with 24 per cent of the resident population for this age group. Only 5 per cent of people coming to Scotland from the rest of the UK were aged 65 and over.

3. The Age and Sex Structure of the Population

3.1 The age and sex composition is one of the most important aspects of the population, as changes in different age groups will have different social and economic impacts. For example, increases in the elderly population are likely to place a greater demand on health and social services. Scotland's estimated population is shown by age and sex in Figure 3.

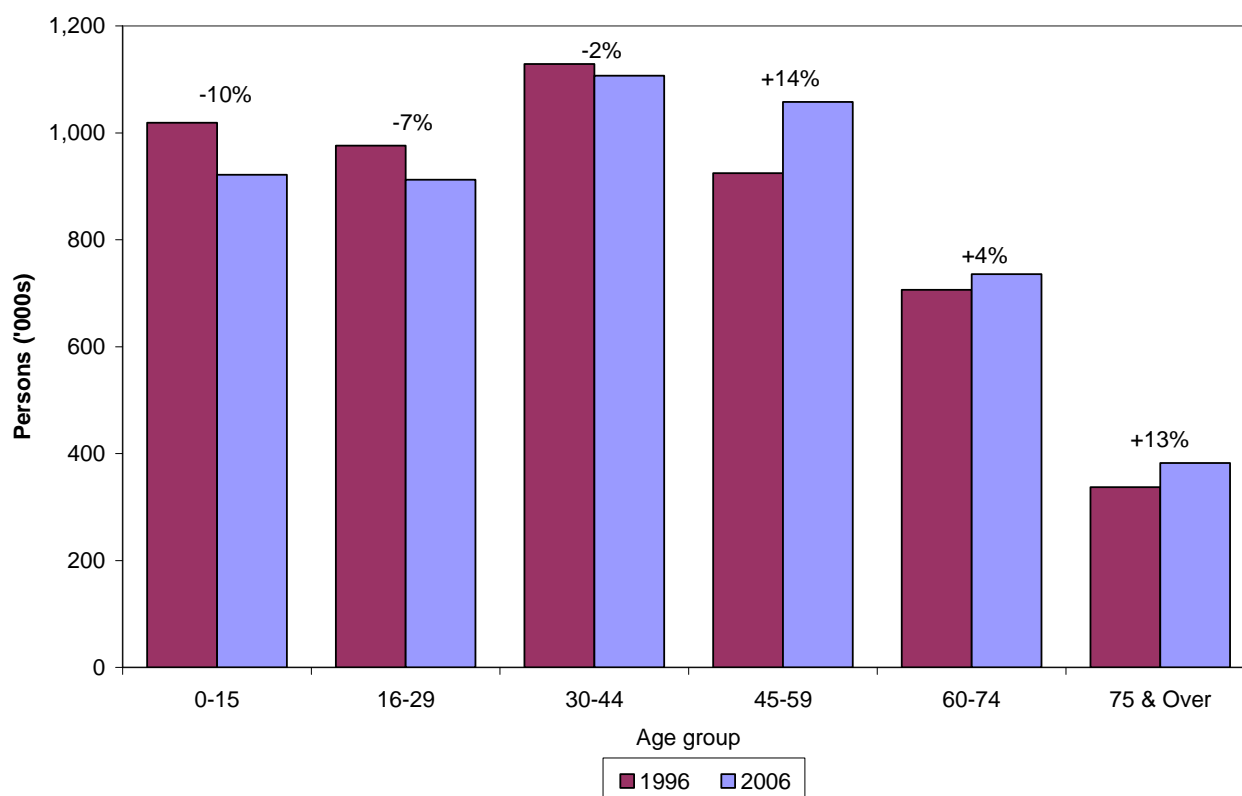
Figure 3 Estimated population by age and sex, 30 June 2006



3.2 Among older people, particularly over 75, the higher number of females reflects the longer expectation of life for women, partly as a result of higher rates of male mortality during the Second World War. The effects of a flu epidemic in 1922 and lower levels of fertility during the First World War are also evident, as seen in the sharp decline in the population aged over 85. The two baby booms of 1947 and the 1960s can also be seen with a sharp peak at age 59 and another peak between the ages of 35 and 45. These baby boomers and low fertility rates are the main reasons Scotland's population is likely to age in the future, though the scale of ageing is open to debate.

3.3 The changing age structure of the population since 1996 is illustrated in Figure 4. The ageing of the population is evident in the rises in the older age groups (14 per cent in the 45-59 age group, 4 per cent in the 60-74 age group and 13 per cent in the 75 and over age group) and the falls in the younger age groups (10 per cent in the under 16 age group, 7 per cent in the 16-29 age group and 2 per cent in the 30-44 age group).

Figure 4 The changing age structure of Scotland's population, 1996-2006



4. Results for Administrative Areas

4.1 Population Change 2005-2006

4.1.1 Population estimates for each Council and NHS Board area, together with details of the components of population change (births, deaths, net migration and other changes) for the period mid-2005 to mid-2006, are shown in Table 2, Table 3 and Table 4.

4.1.2 For the Council areas, Aberdeenshire, City of Edinburgh, Perth & Kinross and West Lothian had the largest percentage population increase at 1.2 per cent. East Lothian and Stirling also had population increases of 1 per cent or more. Inverclyde had the largest percentage population decrease at 0.7 per cent, followed by East Dunbartonshire and Shetland Islands with percentage decreases of 0.5 per cent.

4.1.3 For the NHS Board areas, Lothian (+1.1 per cent), Orkney (+0.9 per cent), Grampian (+0.8 per cent) and Highland (+0.7 per cent) had the largest percentage population increases. The NHS Board area with the largest percentage population decrease was Shetland (-0.5 per cent). Dumfries & Galloway (-0.2 per cent), Ayrshire & Arran (-0.2 per cent) and Western Isles (-0.1 per cent) also had population decreases.

4.2 Population Change 1996-2006

4.2.1 Details of population changes between 1996 and 2006 for administrative areas are shown in Table 6. These changes are illustrated for Council areas in the map at Figure 5a and the chart at Figure 5b which both show the percentage change in the population of Council areas between 1996 and 2006.

Figure 5a Percentage change in population, Council areas, 1996-2006 (Map)

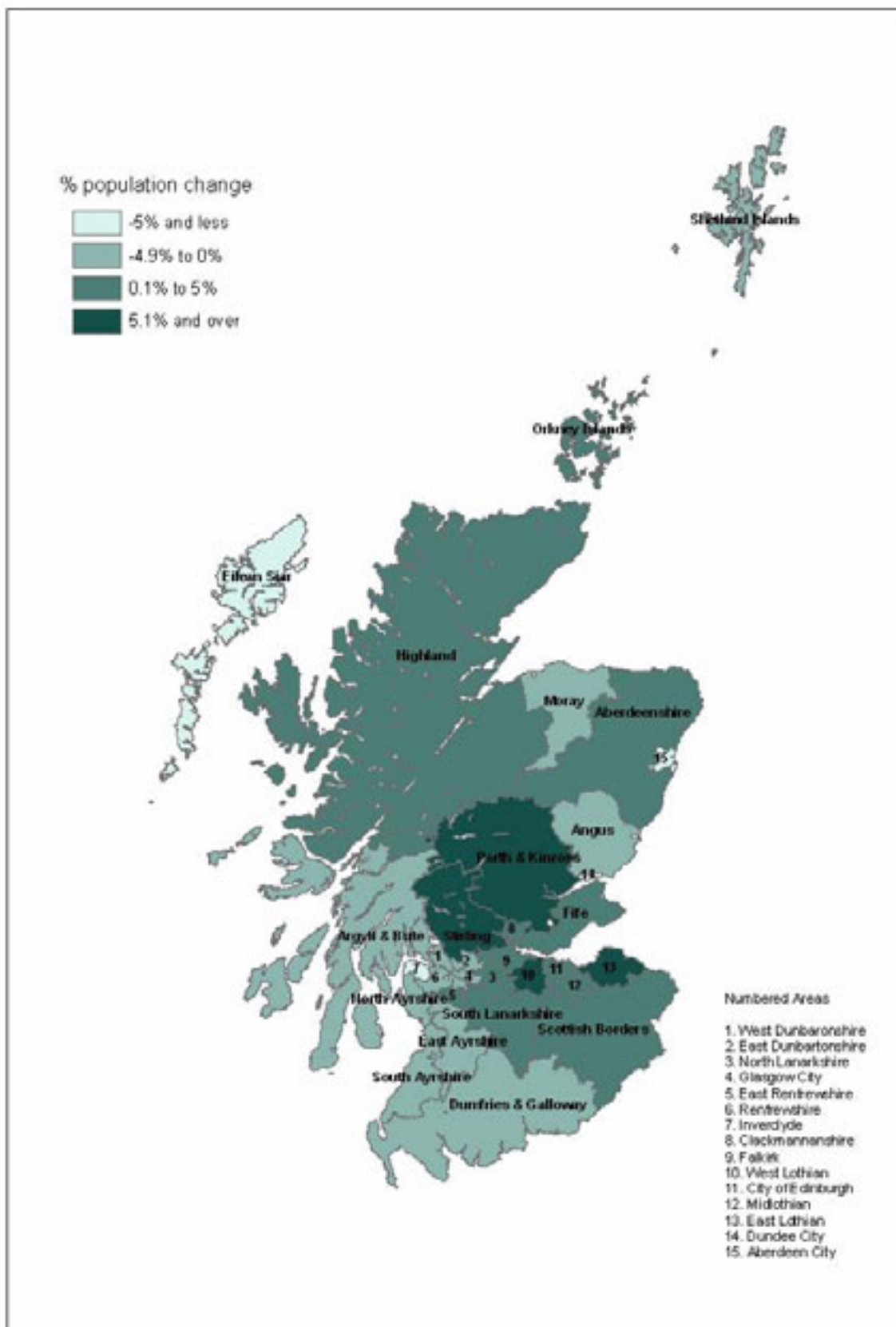
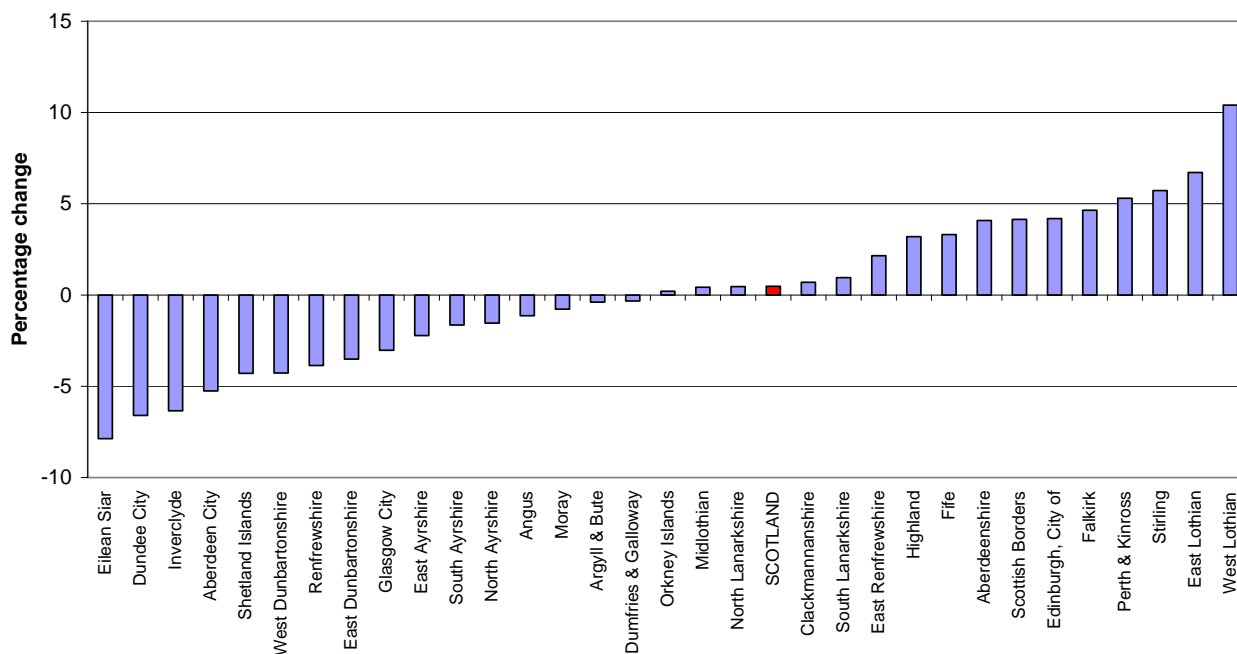


Figure 5b Percentage change in population, Council areas, 1996-2006 (Chart)



4.2.2 Between 1996 and 2006, Eilean Siar (-7.9 per cent), Dundee City (-6.6 per cent), Inverclyde (-6.3 per cent) and Aberdeen City (-5.3 per cent) showed the greatest percentage decreases for Council areas. The largest absolute reduction in numbers was for Glasgow City (-18,150). West Lothian (+10.4 per cent), East Lothian (+6.7 per cent), Stirling (+5.7 per cent) and Perth and Kinross (+5.3 per cent) showed the greatest percentage increases during this period.

4.2.3 The map at Figure 6a and the chart at Figure 6b show the percentage change in population between 1996 and 2006 for each NHS Board area. The greatest percentage decreases in population occurred in the Western Isles (-7.9 per cent) and Shetland (-4.3 per cent). The largest percentage increases were in Lothian (+5.3 per cent), Forth Valley (+4.1 per cent) and Borders (+4.1 per cent).

Figure 6a Percentage change in population, NHS Board areas, 1996-2006 (Map)

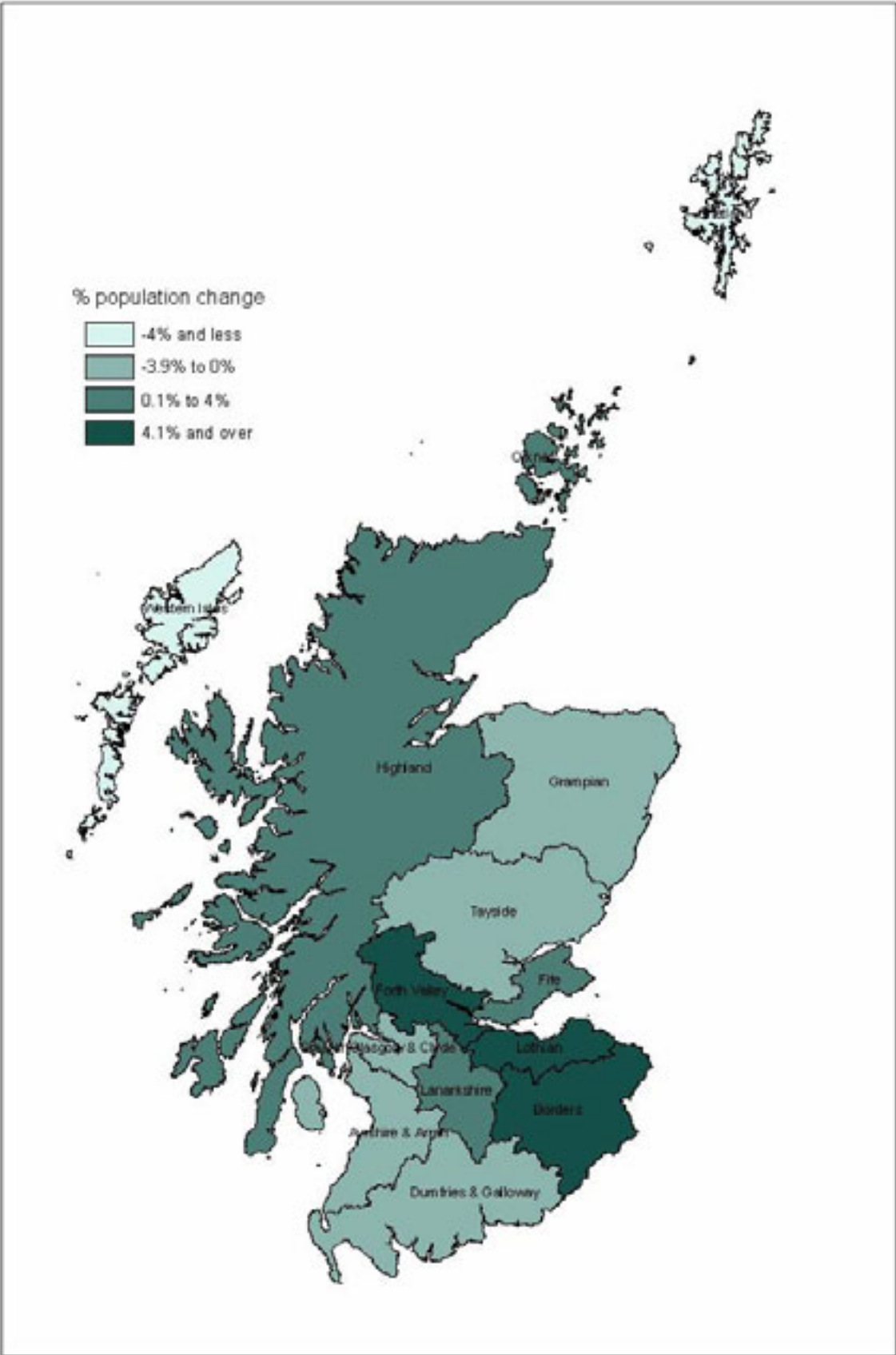
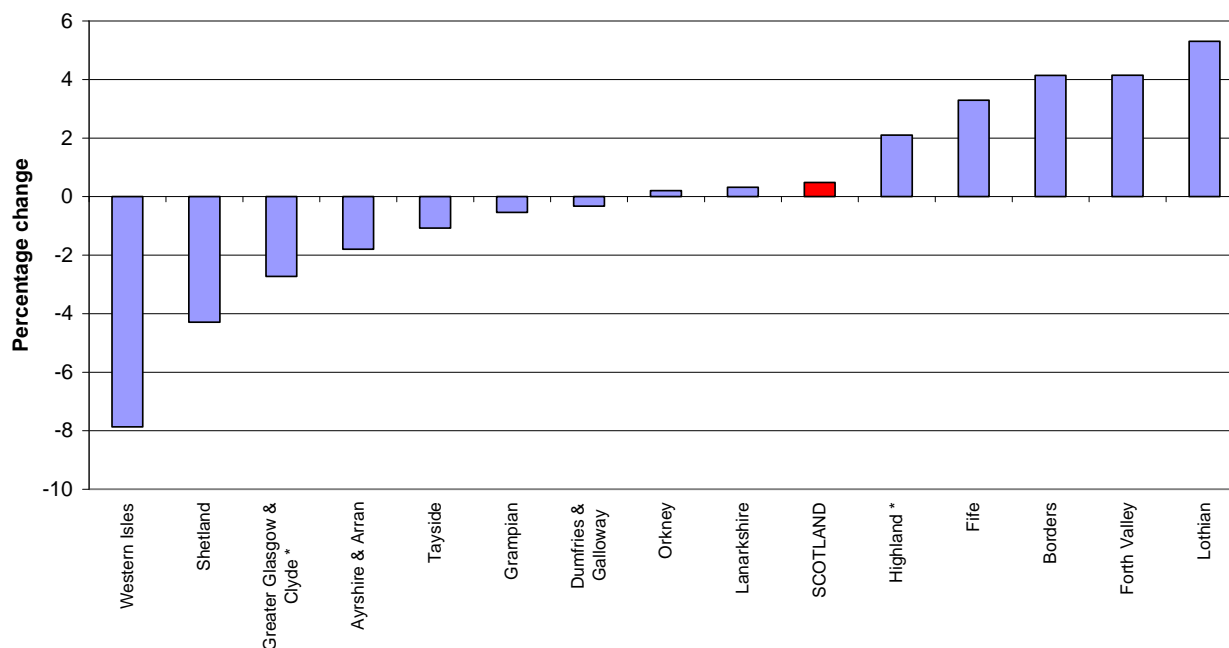


Figure 6b Percentage change in population, NHS Board areas, 1996-2006 (Chart)



* New NHS Board areas including parts of former Argyll & Clyde.

4.3 Sex and Age Structure of Administrative Areas in Scotland

4.3.1 There were more females than males in Scotland in mid-2006 and this is the case for all Council areas and NHS Board areas, except Shetland Islands. Table 7 shows that the “sex ratio” (the male population divided by the female population) for Council areas ranged from 0.90 in Dundee City, Midlothian, North Ayrshire and West Dunbartonshire to 1.01 in Shetland Islands. For the NHS Board areas, the “sex ratio” ranged from 0.91 in Ayrshire & Arran to 1.01 in Shetland.

4.3.2 Though the pattern of age distribution is complex, some general themes can be seen from Table 7. The major cities had the highest proportions of males and females of working age¹. For example, in Edinburgh City 71 per cent of males and 65 per cent of females were of working age and in Glasgow City there were similar results (71 per cent of males and 63 per cent of females). The highest proportions of people of pensionable age² tend to be found in more rural areas such as Dumfries & Galloway (males 19 per cent; females 29 per cent) and Eilean Siar (males 17 per cent; females 30 per cent).

4.3.3 These patterns can also be seen in Figure 7 and Figure 8 which show the proportion of the population under 16, aged 16-64, and 65 and over for Council and NHS Board areas respectively (sorted by proportion of population aged 65 and over).

¹ 16-64 for men, 16-59 for women

² 65 and over for men, 60 and over for women

Figure 7 Age structure of Council areas, 30 June 2006 (% under 16, 16-64 and 65+)

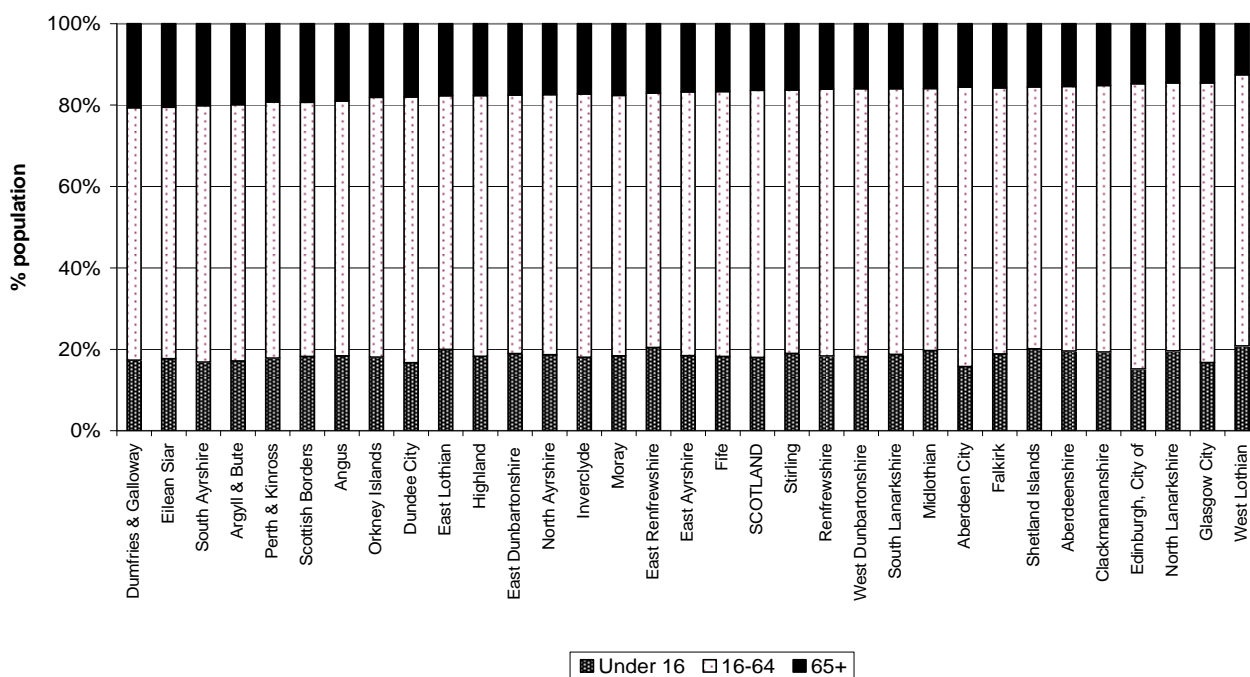
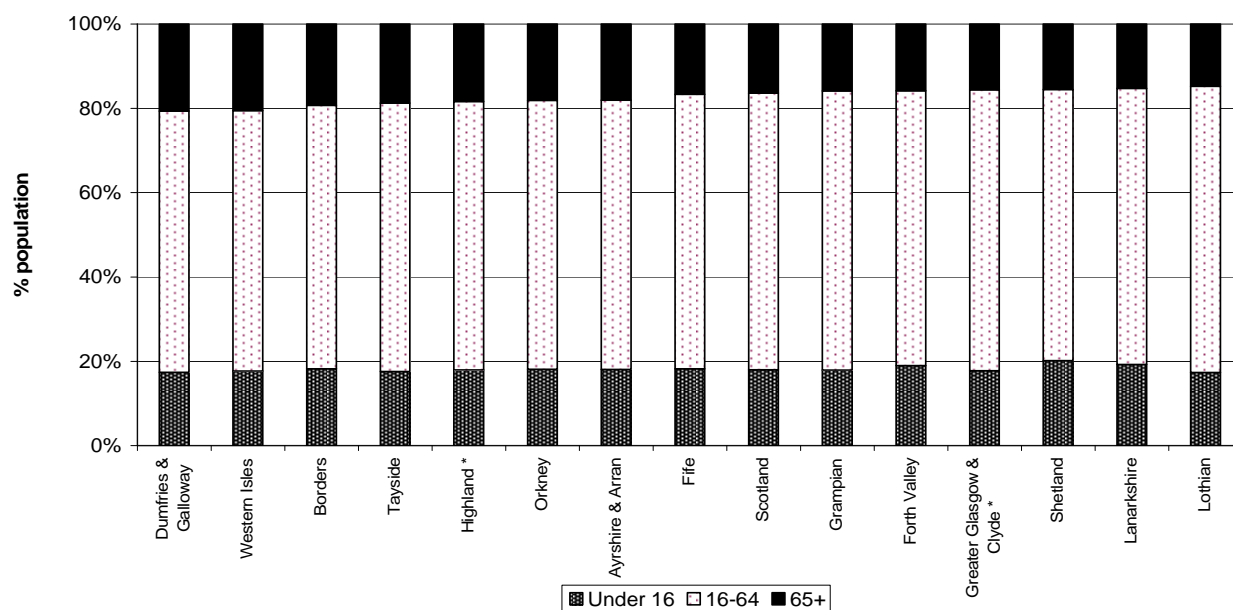


Figure 8 Age structure of NHS Board areas, 30 June 2006 (% under 16, 16-64 and 65+)



* New NHS Board areas including parts of former Argyll & Clyde.

5. Population Density

5.1 Information on land areas and population densities is shown in Table 9. The mid-2006 population density was 66 persons per square kilometre for Scotland and ranged from 8 persons per square kilometre in Highland Council area to 3,309 persons per square kilometre in Glasgow City Council area.

Table 1 Estimated population by age and sex, Scotland: 30 June 2006

Age	Persons	Males	Females	Age	Persons	Males	Females	Age	Persons	Males	Females
All ages	5,116,900	2,469,407	2,647,493								
0	55,168	28,218	26,950	30	59,532	29,276	30,256	60	58,510	28,722	29,788
1	54,746	28,165	26,581	31	60,353	29,248	31,105	61	56,110	27,271	28,839
2	54,079	27,826	26,253	32	61,441	29,902	31,539	62	57,437	27,918	29,519
3	52,641	26,874	25,767	33	65,683	31,727	33,956	63	55,788	26,592	29,196
4	51,823	26,306	25,517	34	70,174	33,533	36,641	64	51,725	24,525	27,200
0 - 4	268,457	137,389	131,068	30 - 34	317,183	153,686	163,497	60 - 64	279,570	135,028	144,542
5	52,843	26,754	26,089	35	74,388	35,753	38,635	65	48,688	22,854	25,834
6	53,732	27,808	25,924	36	74,044	35,524	38,520	66	50,153	23,540	26,613
7	56,297	28,924	27,373	37	77,105	37,127	39,978	67	49,406	23,164	26,242
8	57,441	29,314	28,127	38	78,767	37,676	41,091	68	48,404	22,591	25,813
9	59,117	30,421	28,696	39	80,471	39,067	41,404	69	46,718	21,501	25,217
5 - 9	279,430	143,221	136,209	35 - 39	384,775	185,147	199,628	65 - 69	243,369	113,650	129,719
10	58,698	29,996	28,702	40	79,614	38,137	41,477	70	45,815	20,937	24,878
11	59,521	30,507	29,014	41	82,056	39,512	42,544	71	44,279	19,994	24,285
12	61,527	31,383	30,144	42	81,956	39,236	42,720	72	41,897	18,651	23,246
13	63,027	32,181	30,846	43	81,402	38,929	42,473	73	40,270	17,738	22,532
14	65,423	33,337	32,086	44	80,100	39,053	41,047	74	40,114	17,382	22,732
10 - 14	308,196	157,404	150,792	40 - 44	405,128	194,867	210,261	70 - 74	212,375	94,702	117,673
15	65,750	33,715	32,035	45	78,756	38,088	40,668	75	38,195	16,320	21,875
16	64,154	32,985	31,169	46	76,731	37,331	39,400	76	36,286	15,152	21,134
17	64,203	33,118	31,085	47	75,917	36,766	39,151	77	34,031	14,076	19,955
18	66,467	34,396	32,071	48	74,124	35,902	38,222	78	30,652	12,457	18,195
19	68,132	34,666	33,466	49	72,397	35,219	37,178	79	29,307	11,734	17,573
15 - 19	328,706	168,880	159,826	45 - 49	377,925	183,306	194,619	75 - 79	168,471	69,739	98,732
20	69,695	35,307	34,388	50	70,462	34,603	35,859	80	28,429	11,035	17,394
21	70,835	35,643	35,192	51	67,893	33,277	34,616	81	25,543	9,721	15,822
22	67,177	33,805	33,372	52	67,226	33,026	34,200	82	23,897	8,812	15,085
23	65,756	33,179	32,577	53	66,014	32,478	33,536	83	20,791	7,239	13,552
24	65,602	33,085	32,517	54	63,790	31,352	32,438	84	19,890	6,836	13,054
20 - 24	339,065	171,019	168,046	50 - 54	335,385	164,736	170,649	80 - 84	118,550	43,643	74,907
25	67,788	34,517	33,271	55	65,131	31,952	33,179	85	18,529	6,150	12,379
26	66,557	33,739	32,818	56	65,798	32,434	33,364	86	17,524	5,691	11,833
27	62,443	31,741	30,702	57	67,871	33,402	34,469	87	10,819	3,272	7,547
28	57,620	28,627	28,993	58	70,061	34,411	35,650	88	8,381	2,346	6,035
29	55,905	27,798	28,107	59	75,938	37,178	38,760	89	7,537	2,103	5,434
25 - 29	310,313	156,422	153,891	55 - 59	344,799	169,377	175,422	85 - 89	62,790	19,562	43,228
								90 & over	32,413	7,629	24,784

Age group summaries

	Persons	Males	Females
All aged under 16	921,833	471,729	450,104
All aged under 18	1,050,190	537,832	512,358
All aged 16 & over	4,195,067	1,997,678	2,197,389
All aged 18 & over	4,066,710	1,931,575	2,135,135
All aged 16-29	912,334	462,606	449,728
All aged 30-44	1,107,086	533,700	573,386
All aged 45-64/59 (M/F)	1,193,137	652,447	540,690
All aged 65/60 (M/F) & over	982,510	348,925	633,585
All aged 75 & over	382,224	140,573	241,651

Table 2 Estimated population by sex, single year of age and administrative area: 30 June 2006

Area	PERSONS																																
	All Ages	Age																															
		0	1	2	3	4	5	6	7	8	9	10	11	12	13	14	15	16	17	18	19	20	21	22	23	24	25	26	27	28	29	30	
SCOTLAND	5,116,900	55,168	54,746	54,079	52,641	51,823	52,843	53,732	56,297	57,441	59,117	58,698	59,521	61,527	63,027	65,423	65,750	64,154	64,203	66,467	68,132	69,695	70,835	67,177	65,756	65,602	67,788	66,557	62,443	57,620	55,905	59,532	
Council areas																																	
Aberdeen City	206,880	2,109	2,094	1,896	1,971	1,886	1,906	1,905	2,005	1,949	2,005	1,974	2,072	2,140	2,207	2,212	2,324	2,224	2,380	2,942	3,238	3,549	3,493	3,427	3,647	3,581	3,664	3,829	3,344	3,067	3,012	2,881	
Aberdeenshire	236,260	2,648	2,606	2,591	2,550	2,559	2,627	2,812	2,898	2,891	3,019	2,982	3,045	3,240	3,289	3,305	3,195	3,139	2,815	2,680	2,440	2,401	2,273	2,020	2,033	2,107	2,040	2,012	2,074	2,041	2,225		
Angus	109,320	1,119	1,151	1,181	1,163	1,121	1,181	1,187	1,197	1,275	1,331	1,285	1,308	1,358	1,362	1,441	1,471	1,358	1,311	1,209	1,138	1,134	1,145	1,044	981	989	1,001	930	963	961	909	1,016	
Argyll & Bute	91,390	756	779	867	780	839	825	887	1,008	1,014	1,080	1,099	1,077	1,161	1,168	1,191	1,160	1,206	1,170	1,018	951	1,000	938	936	902	763	837	836	692	681	752	861	
Clackmannanshire	48,900	563	548	515	500	549	533	547	559	584	602	625	619	624	703	699	681	689	633	638	614	572	538	557	515	496	572	556	491	511	497	527	
Dumfries & Galloway	148,030	1,468	1,437	1,388	1,398	1,319	1,373	1,430	1,502	1,709	1,629	1,760	1,765	1,869	1,843	1,900	1,941	1,861	1,763	1,662	1,545	1,420	1,432	1,298	1,170	1,199	1,320	1,278	1,240	1,175	1,102	1,320	
Dundee City	142,170	1,483	1,610	1,464	1,422	1,346	1,338	1,297	1,365	1,479	1,559	1,509	1,413	1,493	1,661	1,607	1,758	1,667	1,790	2,252	2,629	2,779	2,733	2,514	2,317	2,351	2,464	2,399	2,228	1,653	1,513	1,511	
East Ayrshire	119,290	1,276	1,260	1,297	1,234	1,195	1,274	1,235	1,267	1,359	1,343	1,352	1,422	1,537	1,606	1,669	1,673	1,652	1,639	1,536	1,524	1,510	1,421	1,307	1,270	1,293	1,242	1,255	1,215	1,190	1,089	1,338	
East Dunbartonshire	105,460	946	956	1,014	1,090	1,093	1,116	1,141	1,281	1,352	1,285	1,367	1,352	1,452	1,465	1,531	1,541	1,503	1,456	1,329	1,277	1,285	1,383	1,224	1,237	1,107	1,078	1,063	981	768	878	802	
East Lothian	92,830	1,089	1,041	1,099	979	1,036	1,025	1,119	1,152	1,175	1,294	1,208	1,196	1,250	1,245	1,348	1,286	1,212	1,124	1,044	1,039	935	946	764	803	761	753	690	663	692	777	828	
East Renfrewshire	89,290	872	976	1,004	1,006	1,022	1,052	1,107	1,166	1,211	1,244	1,194	1,289	1,300	1,264	1,297	1,241	1,283	1,334	1,126	1,085	1,085	1,096	1,032	908	839	870	788	705	677	623	688	
Edinburgh, City of	463,510	4,799	4,420	4,354	4,179	4,085	4,024	4,165	4,270	4,298	4,241	4,450	4,394	4,447	4,612	4,818	4,805	4,727	5,041	5,822	7,249	8,331	9,229	9,158	9,507	9,796	9,786	9,982	8,910	8,015	7,617	7,657	
Eilean Siar	26,350	251	223	281	268	254	237	275	288	277	322	340	302	327	317	365	339	372	321	296	229	214	232	206	178	188	236	259	256	199	254	311	
Falkirk	149,680	1,776	1,777	1,665	1,700	1,549	1,680	1,651	1,714	1,783	1,825	1,701	1,818	1,789	1,935	1,887	2,025	1,866	1,794	1,932	1,794	1,696	1,726	1,487	1,573	1,780	1,815	1,775	1,774	1,763	1,686	1,775	
Fife	358,930	3,933	3,852	3,884	3,758	3,655	3,903	3,739	4,042	4,039	4,070	4,160	4,319	4,398	4,535	4,547	4,657	4,598	4,708	4,993	5,239	5,277	5,124	4,728	4,254	4,128	4,180	4,232	3,864	3,507	3,488	3,950	
Glasgow City	580,690	6,641	6,571	6,129	5,884	5,640	5,614	5,609	5,641	5,819	6,064	5,824	6,032	6,012	6,389	6,786	6,679	6,750	7,158	8,344	9,587	10,314	10,853	10,560	10,966	10,792	11,295	11,113	10,435	9,569	8,981	9,286	
Highland	215,310	2,256	2,220	2,241	2,179	2,158	2,301	2,185	2,470	2,548	2,528	2,564	2,604	2,677	2,761	2,855	2,845	2,736	2,662	2,350	2,142	2,056	2,087	1,945	1,754	1,946	2,301	2,207	2,186	2,012	1,974	2,237	
Inverclyde	81,540	835	900	855	823	762	819	845	898	914	972	974	967	987	970	1,101	1,087	1,101	1,058	1,126	1,061	1,127	1,123	1,013	984	957	972	991	857	820	766	781	
Midlothian	79,290	917	863	892	891	819	932	950	1,020	993	1,010	972	1,024	997	1,101	1,148	1,056	1,044	1,083	978	1,000	903	887	1,170	1,148	1,083	978	1,000	903	887	746	735	750
Moray	86,750	892	903	818	827	776	897	940	972	1,040	1,057	1,090	1,092	1,103	1,148	1,228	1,178	1,190	1,208	1,057	1,004	895	972	889	827	815	793	827	861	776	791	933	
North Ayrshire	135,490	1,487	1,400	1,431	1,453	1,428	1,413	1,432	1,436	1,530	1,617	1,666	1,726	1,775	1,770	1,821	1,947	1,804	1,777	1,827	1,723	1,652	1,624	1,458	1,480	1,489	1,469	1,380	1,383	1,257	1,201	1,422	
North Lanarkshire	323,780	3,866	3,892	3,913	3,763	3,767	3,691	3,674	3,988	3,976	4,149	4,020	3,914	4,105	4,040	4,404	4,391	4,206	4,240	4,226	4,184	4,271	4,387	4,132	4,143	4,192	4,178	4,240	3,888	3,637	3,474	4,069	
Orkney Islands	19,770	196	196	171	179	186	158	191	223	201	256	253	267	281	241	291	289	299	261	232	183	174	192	157	156	161	187	171	195	177	151	191	
Perth & Kinross	140,190	1,293	1,392	1,396	1,377	1,380	1,515	1,492	1,523	1,603	1,675	1,563	1,643	1,759	1,795	1,809	1,840	1,636	1,755	1,647	1,547	1,586	1,560	1,636	1,425	1,395	1,420	1,284	1,274	1,209	1,226	1,212	
Renfrewshire	169,590	1,860	1,895	1,878	1,759	1,784	1,844	1,809	1,875	1,904	2,015	1,927	1,973	2,054	2,114	2,198	2,250	2,229	2,078	2,184	2,195	2,188	2,161	2,017	2,102	2,031	2,216	2,073	1,883	1,817	1,733	1,655	
Scottish Borders	110,240	1,092	1,122	1,139	1,137	1,195	1,147	1,234	1,211	1,204	1,300	1,374	1,361	1,320	1,437	1,404	1,452	1,414	1,242	1,193	1,082	1,028	1,016	926	913	812	926	892	915	836	887	958	
Shetland Islands	21,880	262	224	240	262	225	248	293	238	279	289	273	301	285	322	339	330	343	294	227	218	207	219	186	181	199	230	237	271	211	284	232	
South Ayrshire	111,670	979	1,070	1,038	999	1,060	1,061	1,069	1,161	1,233	1,237	1,232	1,247	1,337	1,348	1,403	1,369	1,473	1,361	1,321	1,298	1,269	1,287	1,278	1,057	1,098	1,162	969	1,065	966	895	921	
South Lanarkshire	307,670	3,440	3,342	3,366	3,229	3,296	3,240	3,477	3,586	3,513	3,764	3,650	3,644	3,970	3,936	4,109	4,089	3,959	3,754	3,930	3,805	3,863	3,987	3,849	3,607	3,558	3,817	3,680	3,386	3,295	3,032	3,374	
Stirling	87,810	892	929	988	957	878	985	1,006	1,090	1,082	1,098	1,044	1,097	1,124	1,128	1,222	1,144	1,126	1,314	1,765	1,533	1,436	1,342	1,201	1,046	1,000	975	873	840	695	779	721	
West Dunbartonshire	91,240	1,025	970	954	930	918	903	981	981	1,029	1,075	1,048	1,066	1,133	1,175	1,221	1,208	1,228	1,199	1,277	1,233	1,329	1,347	1,302	1,223	1,158	1,238	1,067	1,015	952	958	1,020	
West Lothian	165,700	2,147	2,127	2,130	1,994	2,043	1,981	2,048	2,270	2,178	2,162	2,218	2,169	2,196	2,293	2,261	2,297	2,191	2,195	2,064	2,128	2,073	1,937	1,786	1,795	1,875	1,938	1,906	1,901	1,814	1,831	2,080	
NHS Board areas																																	
Ayrshire & Arran	366,450	3,742	3,730	3,766	3,686	3,683	3,748	3,736	3,864	4,122	4,197	4,250	4,395	4,649	4,724	4,893	4,989	4,929	4,777	4,684	4,545	4,431	4,332	4,043	3,807	3,880	3,873	3,604	3,663	3,413	3,185	3,681	
Borders	110,247	1,090	1,123	1,139	1,137	1,195	1,148	1,234	1,212	1,205	1,300	1,374	1,361	1,320	1,437	1,404	1,452	1,414	1,242	1,193	1,082	1,028	1,016	926	913	812	926	892	915	836	887	958	
Dumfries & Galloway	148,030	1,468	1,437	1,388	1,398	1,319	1,373	1,430	1,502	1,709	1,629	1,760	1,765	1,869	1,843	1,900	1,941	1,861															

Table 2 (continued)

MALES

Area	All Ages	Age																															
		0	1	2	3	4	5	6	7	8	9	10	11	12	13	14	15	16	17	18	19	20	21	22	23	24	25	26	27	28	29	30	
SCOTLAND	2,469,407	28,218	28,165	27,826	26,874	26,306	26,754	27,808	28,924	29,314	30,421	29,996	30,507	31,383	32,181	33,337	33,715	32,985	33,118	34,396	34,666	35,307	35,643	33,805	33,179	33,085	34,517	33,739	31,741	28,627	27,798	29,276	
Council areas																																	
Aberdeen City	101,841	1,075	1,039	988	1,008	935	984	1,028	1,034	1,028	1,063	1,038	1,083	1,097	1,149	1,171	1,143	1,092	1,199	1,326	1,441	1,631	1,600	1,693	1,747	1,824	2,015	2,161	1,817	1,683	1,700	1,526	
Aberdeenshire	116,988	1,389	1,345	1,346	1,312	1,279	1,350	1,489	1,485	1,534	1,587	1,530	1,549	1,668	1,669	1,600	1,699	1,627	1,621	1,477	1,450	1,319	1,307	1,236	1,118	1,104	1,117	1,058	1,026	1,026	981	1,049	
Angus	52,792	567	582	614	581	568	597	614	616	636	695	635	649	716	685	715	819	715	666	633	588	638	623	592	497	492	522	461	520	449	428	511	
Argyll & Bute	45,540	388	409	443	412	411	422	454	481	520	561	544	579	589	564	591	591	557	650	581	560	632	559	586	549	476	518	508	412	391	401	443	
Clackmannanshire	23,715	292	287	272	254	297	264	271	304	282	305	310	317	302	354	350	325	345	323	323	317	317	284	304	281	242	289	268	251	230	222	262	
Dumfries & Galloway	71,573	746	738	700	714	683	719	736	797	836	806	931	883	959	911	970	973	991	933	893	831	756	769	654	606	571	702	591	583	554	555	619	
Dundee City	67,504	762	845	769	736	688	684	652	701	764	795	782	752	783	856	788	869	868	922	1,061	1,190	1,291	1,332	1,225	1,205	1,166	1,273	1,289	1,143	853	775	713	
East Ayrshire	57,516	661	642	671	616	577	656	615	626	743	708	702	778	765	817	836	802	850	860	835	778	776	710	679	648	624	594	609	596	605	526	649	
East Dunbartonshire	50,859	487	504	549	558	567	565	591	661	716	644	718	691	763	771	761	813	803	788	704	700	667	737	645	633	604	613	592	556	398	459	371	
East Lothian	44,555	570	558	542	506	532	482	563	593	571	649	620	613	645	625	697	649	622	557	599	598	503	492	388	414	351	403	341	354	320	329	356	
East Renfrewshire	42,540	435	492	518	518	518	546	580	623	650	621	617	686	650	617	674	633	681	715	585	584	553	565	574	464	430	471	432	339	345	299	308	
Edinburgh, City of	223,028	2,498	2,301	2,265	2,191	2,112	2,051	2,157	2,161	2,176	2,293	2,278	2,294	2,251	2,441	2,484	2,495	2,365	2,613	2,874	3,422	3,915	4,263	4,197	4,538	4,772	4,773	4,931	4,522	3,995	3,918	3,862	
Eilean Siar	12,969	120	113	128	137	124	104	157	149	138	156	165	148	160	169	193	179	201	169	154	146	126	134	107	112	95	105	127	107	100	125	144	
Falkirk	72,330	901	906	858	870	812	836	877	856	919	977	860	898	922	1,001	963	1,029	949	939	1,010	1,005	908	839	721	713	901	928	896	815	858	831	850	
Fife	173,054	1,984	1,941	2,001	1,924	1,853	1,969	2,015	2,126	1,957	2,070	2,145	2,181	2,198	2,274	2,371	2,404	2,356	2,350	2,535	2,577	2,705	2,635	2,398	2,298	2,129	2,179	2,067	2,146	1,895	1,707	1,678	1,929
Glasgow City	278,635	3,424	3,383	3,161	2,991	2,859	2,852	2,900	2,862	2,952	3,097	2,995	3,082	3,098	3,222	3,427	3,421	3,567	3,651	4,319	4,733	5,018	5,276	5,077	5,436	5,365	5,602	5,545	5,383	4,944	4,591	4,724	
Highland	105,285	1,156	1,146	1,133	1,101	1,107	1,197	1,130	1,334	1,326	1,332	1,273	1,336	1,365	1,366	1,457	1,469	1,445	1,405	1,313	1,193	1,173	1,184	1,098	915	974	1,190	1,099	1,139	1,007	995	1,120	
Inverclyde	38,901	421	475	438	426	387	422	446	453	503	503	489	487	470	507	575	570	545	565	578	558	584	577	530	498	477	508	501	437	424	400	374	
Midlothian	37,568	450	445	478	476	429	442	461	485	514	488	494	534	516	512	592	584	533	565	556	518	497	467	441	421	408	348	347	340	280	323	335	
Moray	43,718	475	447	404	430	431	450	518	503	539	536	550	575	565	573	630	638	603	650	574	579	528	569	516	466	462	457	503	472	424	420	504	
North Ayrshire	64,125	748	722	727	752	718	697	730	709	769	832	837	882	886	937	938	1,022	941	927	951	909	831	800	704	739	738	740	644	654	580	552	657	
North Lanarkshire	155,520	1,990	2,007	2,016	1,903	1,911	1,861	1,880	2,085	1,986	2,125	2,060	1,998	2,128	2,078	2,288	2,250	2,166	2,130	2,206	2,106	2,137	2,179	2,084	2,151	2,147	2,110	2,099	1,956	1,711	1,671	1,950	
Orkney Islands	9,717	97	95	89	84	84	78	90	130	115	143	144	131	128	104	145	148	159	142	122	96	94	106	83	85	84	98	86	91	83	67	98	
Perth & Kinross	67,964	645	708	727	705	718	739	776	790	851	829	767	821	922	903	959	947	878	926	902	837	832	775	884	780	727	774	670	682	624	592	621	
Renfrewshire	80,948	939	963	946	900	894	918	900	962	977	1,085	961	1,012	1,054	1,105	1,067	1,169	1,150	1,034	1,128	1,128	1,111	1,130	1,016	1,043	1,041	1,130	1,015	931	884	855	853	
Scottish Borders	53,385	574	577	587	582	596	607	605	640	581	675	695	683	666	723	716	726	722	674	639	535	528	514	445	445	410	489	469	452	428	441	440	
Shetland Islands	10,976	128	129	127	136	120	122	154	105	139	143	131	153	148	167	183	162	168	142	120	138	120	135	96	97	107	128	126	132	109	129	129	
South Ayrshire	53,317	497	530	532	515	551	558	587	593	621	619	615	637	655	693	698	705	741	690	683	659	666	676	647	571	546	583	497	558	398	453	459	
South Lanarkshire	147,072	1,724	1,710	1,709	1,583	1,662	1,620	1,781	1,800	1,804	1,912	1,895	1,856	2,000	2,006	2,137	2,052	1,917	2,097	2,003	2,014	2,079	1,947	1,854	1,822	1,890	1,885	1,678	1,562	1,472	1,617		
Stirling	41,893	446	482	528	498	464	484	512	574	566	555	529	551	585	577	598	571	590	656	869	735	723	656	625	549	490	506	392	427	285	318	304	
West Dunbartonshire	43,223	520	525	486	477	435	463	482	499	533	566	564	533	620	593	647	615	619	607	653	667	653	671	660	629	565	605	516	505	450	436	480	
West Lothian	80,356	1,109	1,119	1,074	978	984	1,015	1,057	1,187	1,068	1,051	1,122	1,135	1,109	1,218	1,157	1,158	1,084	1,132	1,098	1,085	1,061	1,000	947	846	891	969	935	948	880	916	1,019	
NHS Board areas																																	
Ayrshire & Arran	174,958	1,906	1,894	1,930	1,883	1,846	1,911	1,932	1,928	2,133	2,159	2,154	2,297	2,306	2,447	2,472	2,529	2,532	2,477	2,469	2,346	2,273	2,186	2,030	1,958	1,908	1,917	1,750	1,808	1,623	1,471	1,765	
Borders	53,389	572	578	587	582	596	608	605	641	582	675	695	683	666	723	716	726	722	674	639	535	528	513	451	445	409	489	469	452	428	441	440	
Dumfries & Galloway	71,573	746	738	700	714	683	719	736	797	836	806	931	883	959	911	970	973	991	933	893	831	756	769	654	606	571	702	591	583	554	555	619	
Fife	173,020	1,984	1,941	2,001	1,924	1,853	1,967	2,016	2,127	1,956	2,068	2,143	2,180	2,197	2,273	2,370	2,404	2,355	2,350	2,534	2,578	2,705	2,634	2,398	2,129	2,178	2,067	2,145	1,896	1,707	1,678	1,929	
Forth Valley	137,762	1,638	1,675	1,658	1,618	1,570	1,584	1,661	1,733	1,767	1,835	1,700	1,764	1,806	1,932	1,909	1,923	1,886	1,914	2,201	2,054	1,948	1,778	1,644	1,545	1,635	1,718	1,554	1,491	1,368	1,368	1,413	
Grampian	262,546	2,939	2,831	2,738	2,750	2,645	2,784	3,035	3,022	3,101	3,186	3,118	3,207	3,3																			

Table 2 (continued)

FEMALES

Area	Age																																	
	All Ages	0	1	2	3	4	5	6	7	8	9	10	11	12	13	14	15	16	17	18	19	20	21	22	23	24	25	26	27	28	29	30		
SCOTLAND	2,647,493	26,950	26,581	26,253	25,767	25,417	26,089	25,924	27,373	28,127	28,696	28,702	29,014	30,144	30,846	32,066	32,035	31,169	31,085	32,071	33,466	34,388	35,192	33,372	32,517	32,251	33,275	32,818	30,702	28,993	28,107	30,256		
Council areas																																		
Aberdeen City	105,039	1,034	1,055	908	963	951	922	877	971	921	942	936	989	1,043	1,058	1,041	1,181	1,132	1,181	1,616	1,797	1,918	1,893	1,734	1,900	1,757	1,649	1,668	1,527	1,384	1,312	1,355		
Aberdeenshire	119,272	1,259	1,261	1,245	1,238	1,280	1,277	1,323	1,413	1,357	1,432	1,452	1,496	1,572	1,571	1,689	1,606	1,568	1,518	1,338	1,230	1,121	1,094	1,037	902	929	990	982	986	1,048	1,060	1,176		
Angus	56,528	552	569	567	582	553	584	573	581	639	636	650	659	642	677	726	652	643	645	576	550	496	522	452	484	497	479	469	443	512	481	505		
Argyll & Bute	45,850	368	370	424	368	428	403	433	527	494	519	555	498	572	604	600	569	649	520	437	391	368	379	350	353	287	319	328	280	290	351	418		
Clackmannanshire	25,185	271	261	243	246	252	269	276	255	302	297	315	302	322	349	349	356	344	310	315	297	255	254	253	234	254	283	288	240	281	275	265		
Dumfries & Galloway	76,457	722	699	688	684	636	654	694	705	873	823	829	882	910	932	930	968	870	830	769	714	664	663	644	564	628	618	687	657	621	547	701		
Dundee City	74,666	721	765	695	686	658	654	645	664	715	764	727	661	710	805	819	889	799	868	1,191	1,439	1,488	1,401	1,289	1,112	1,185	1,191	1,110	1,085	800	738	798		
East Ayrshire	61,774	615	618	626	618	618	618	620	641	616	635	650	644	772	789	833	871	802	779	701	746	734	711	628	622	669	648	646	619	585	563	689		
East Dunbartonshire	54,601	459	452	465	532	526	551	550	620	636	641	649	661	689	694	720	728	700	668	625	577	618	646	579	604	503	465	471	425	370	419	431		
East Lothian	48,275	519	483	557	473	504	543	556	559	604	645	588	583	605	620	651	637	590	567	445	441	432	454	376	389	410	350	349	309	372	448	472		
East Renfrewshire	46,750	437	484	486	488	504	506	527	543	561	623	577	603	650	647	623	608	602	619	541	501	532	531	458	444	409	399	356	366	332	324	380		
Edinburgh, City of	240,482	2,301	2,119	2,089	1,988	1,973	1,973	2,008	2,109	2,122	1,948	2,172	2,100	2,196	2,171	2,334	2,310	2,362	2,428	2,948	3,827	4,416	4,966	4,961	4,969	5,024	5,013	5,051	4,388	4,020	3,699	3,795		
Eilean Siar	13,381	131	110	153	131	130	133	118	139	139	166	175	154	167	148	172	160	171	152	142	83	88	98	99	66	93	131	132	129	99	129	167		
Falkirk	77,350	875	871	807	830	737	844	774	858	864	848	841	920	867	934	924	996	917	855	922	789	788	887	766	860	879	887	879	959	905	855	925		
Fife	185,876	1,949	1,911	1,883	1,834	1,802	1,934	1,724	1,916	2,082	2,000	2,015	2,138	2,200	2,261	2,176	2,253	2,242	2,358	2,458	2,662	2,572	2,489	2,330	2,125	1,949	2,113	2,086	1,969	1,800	1,810	2,021		
Glasgow City	302,055	3,217	3,188	2,968	2,893	2,781	2,762	2,709	2,779	2,867	2,967	2,829	2,950	2,914	3,167	3,359	3,258	3,183	3,507	4,025	4,854	5,296	5,577	5,483	5,530	5,427	5,693	5,568	5,052	4,625	4,390	4,562		
Highland	110,025	1,100	1,074	1,108	1,078	1,051	1,104	1,055	1,136	1,222	1,196	1,291	1,268	1,312	1,395	1,398	1,376	1,291	1,257	1,037	949	883	903	847	839	972	1,111	1,108	1,047	1,005	979	1,117		
Inverclyde	42,639	414	425	417	397	375	397	399	445	411	469	485	480	517	463	526	517	556	493	550	503	543	546	483	486	480	464	490	420	396	366	407		
Midlothian	41,722	467	418	414	415	390	490	489	535	479	522	478	493	508	485	578	564	523	479	527	460	503	436	446	394	410	398	388	410	364	381	415		
Moray	43,032	417	456	414	397	345	447	422	469	501	521	540	517	538	575	598	540	587	558	483	425	367	403	373	361	353	336	324	389	352	371	429		
North Ayrshire	71,365	739	678	704	701	710	716	702	727	761	785	829	844	889	833	883	925	863	850	876	814	821	824	754	741	751	729	736	729	677	649	765		
North Lanarkshire	168,260	1,876	1,885	1,897	1,860	1,856	1,830	1,794	1,903	1,990	2,024	1,960	1,917	1,977	1,962	2,116	2,141	2,040	2,110	2,020	2,078	2,134	2,208	2,048	1,992	2,045	2,068	2,141	1,932	1,926	1,803	2,119		
Orkney Islands	10,053	99	101	82	95	102	80	101	93	86	113	109	136	153	137	146	141	140	119	110	87	80	86	74	77	89	85	104	94	84	93			
Perth & Kinross	72,226	648	684	669	672	662	776	716	733	752	846	796	822	837	892	850	893	758	829	745	710	754	785	752	645	668	646	614	592	585	634	591		
Renfrewshire	88,642	921	932	932	859	890	926	909	913	927	930	966	961	1,000	1,009	1,131	1,081	1,079	1,044	1,056	1,067	1,077	1,031	1,001	1,059	990	1,086	1,058	952	933	878	802		
Scottish Borders	56,855	518	545	552	555	599	540	629	571	623	625	679	678	654	714	688	726	692	568	554	547	500	503	475	468	404	437	423	463	408	446	518		
Shetland Islands	10,904	134	95	113	126	105	126	139	133	140	146	142	148	137	155	156	168	175	152	107	80	87	84	90	84	92	102	111	139	102	155	103		
South Ayrshire	58,353	482	540	506	484	509	503	482	568	612	618	617	610	682	655	705	664	732	671	638	639	603	611	631	486	552	579	472	507	528	502	462		
South Lanarkshire	160,598	1,716	1,632	1,657	1,646	1,634	1,620	1,696	1,786	1,709	1,852	1,755	1,788	1,970	1,936	2,013	1,952	1,907	1,837	1,833	1,802	1,849	1,908	1,902	1,753	1,736	1,927	1,795	1,708	1,733	1,560	1,757		
Stirling	45,917	446	447	460	459	414	501	494	516	516	543	515	546	539	551	624	573	536	658	896	798	713	686	576	497	510	469	481	413	410	461	417		
West Dunbartonshire	48,017	505	445	468	453	483	440	499	482	496	509	484	533	513	582	574	593	609	592	624	566	676	676	642	594	593	633	551	510	502	522	540		
West Lothian	85,344	1,038	1,008	1,056	1,016	1,059	966	991	1,083	1,110	1,111	1,096	1,034	1,087	1,075	1,104	1,139	1,107	1,063	966	1,043	1,012	937	839	949	984	969	971	953	934	915	1,061		
NHS Board areas																																		
Ayrshire & Arran	191,492	1,836	1,836	1,836	1,803	1,837	1,837	1,804	1,936	1,989	2,038	2,096	2,098	2,343	2,277	2,421	2,460	2,397	2,300	2,215	2,199	2,158	2,146	2,013	1,849	1,972	1,956	1,854	1,855	1,790	1,714	1,916		
Borders	56,858	518	545	552	555	599	540	629	571	623	625	679	678	654	714	688	726	692	568	554	547	500	503	475	468	403	437	423	463	408	446	518		
Dumfries & Galloway	76,457	722	699	688	684	636	654	694	705	873	823	829	882	910	932	930	968	870	830	769	714	664	663	644	564	628	618	687	657	621	547	701		
Fife	185,838	1,949	1,911	1,883	1,834	1,803	1,933	1,723	1,916	2,082	1,999	2,014	2,138	2,199	2,261	2,176	2,253	2,241	2,356	2,458	2,663	2,572	2,486	2,329	2,127	1,949	2,113	2,085	1,969	1,800	1,810	2,021		
Forth Valley	148,291	1,591	1,580	1,509	1,532	1,403	1,614	1,543	1,629	1,679	1,684	1,670	1,767	1,726	1,832	1,895	1,923	1,794	1,823	2,131	1,884	1,755	1,834	1,591	1,593	1,644	1,636	1,648	1,610	1,596	1,588	1,608		
Grampian	267,343	2,710	2,772	2,567	2,598	2,576	2,646	2,622	2,853	2,779	2,895	2,928	3,002	3,153	3,204	3,328	3,327	3,287	3,257	3,437														

Table 2 (continued)

PERSONS (continued)

Area	Age																														
	31	32	33	34	35	36	37	38	39	40	41	42	43	44	45	46	47	48	49	50	51	52	53	54	55	56	57	58	59	60	
SCOTLAND	60,353	61,441	65,683	70,174	74,388	74,044	77,105	78,767	80,471	79,614	82,056	81,956	81,402	80,100	78,756	76,731	75,917	74,124	72,397	70,462	67,893	67,226	66,014	63,790	65,131	65,798	67,871	70,061	75,938	58,510	
Council areas																															
Aberdeen City	2,844	2,896	2,985	3,024	3,046	2,979	3,096	2,945	3,119	2,999	3,128	3,124	3,085	3,050	2,916	3,159	3,082	2,976	2,867	2,833	2,805	2,717	2,518	2,553	2,520	2,544	2,678	2,665	2,879	2,120	
Aberdeenshire	2,347	2,707	2,961	3,119	3,619	3,529	3,850	3,771	3,969	3,952	4,047	4,096	4,012	3,861	3,867	3,723	3,767	3,812	3,667	3,652	3,584	3,656	3,416	3,293	3,432	3,408	3,561	3,675	3,881	3,071	
Angus	1,054	1,137	1,354	1,441	1,471	1,396	1,538	1,519	1,659	1,597	1,756	1,769	1,703	1,793	1,642	1,758	1,608	1,566	1,551	1,549	1,597	1,462	1,539	1,604	1,681	1,754	1,983	1,404	1,474		
Argyll & Bute	891	867	1,053	1,120	1,102	1,259	1,247	1,375	1,403	1,351	1,470	1,417	1,416	1,373	1,401	1,384	1,343	1,340	1,351	1,344	1,240	1,270	1,221	1,221	1,388	1,326	1,414	1,409	1,748	1,275	
Clackmannanshire	550	542	633	686	632	724	817	765	876	798	816	797	811	772	771	745	750	679	675	659	700	671	635	612	668	687	735	732	786	609	
Dumfries & Galloway	1,293	1,396	1,485	1,733	1,862	1,879	2,048	2,016	2,156	2,238	2,362	2,329	2,423	2,370	2,287	2,215	2,173	2,176	2,098	2,130	2,075	2,072	2,025	2,050	2,146	2,292	2,329	2,412	2,618	2,060	
Dundee City	1,529	1,541	1,582	1,635	1,877	1,754	1,873	1,762	1,866	1,968	2,022	2,007	2,106	2,036	2,045	2,021	1,891	1,949	1,904	1,742	1,736	1,639	1,639	1,654	1,595	1,680	1,768	1,791	2,065	1,513	
East Ayrshire	1,357	1,280	1,474	1,689	1,728	1,725	1,901	1,897	1,986	1,874	2,053	1,912	1,899	1,808	1,826	1,720	1,799	1,697	1,731	1,574	1,539	1,560	1,610	1,491	1,584	1,693	1,670	1,760	1,943	1,435	
East Dunbartonshire	753	886	1,010	1,147	1,196	1,348	1,415	1,475	1,589	1,554	1,714	1,747	1,811	1,817	1,791	1,724	1,812	1,697	1,784	1,613	1,539	1,500	1,515	1,355	1,432	1,486	1,498	1,502	1,674	1,317	
East Lothian	1,002	964	1,135	1,180	1,402	1,403	1,521	1,529	1,631	1,470	1,602	1,597	1,595	1,486	1,537	1,458	1,451	1,405	1,413	1,341	1,259	1,259	1,233	1,143	1,250	1,214	1,195	1,357	1,400	1,109	
East Renfrewshire	634	835	866	943	1,117	1,156	1,255	1,288	1,396	1,441	1,473	1,551	1,571	1,548	1,498	1,542	1,545	1,444	1,427	1,386	1,331	1,218	1,165	1,195	1,097	1,160	1,204	1,244	1,354	1,001	
Edinburgh, City of	7,633	7,288	7,185	7,176	7,549	7,091	6,903	7,183	7,124	6,830	6,985	6,736	6,936	6,652	6,600	6,328	6,202	6,046	6,099	5,606	5,386	5,278	5,170	5,073	5,164	5,223	5,336	5,290	5,994	4,278	
Eilean Siar	250	245	308	355	306	327	401	419	399	373	371	407	394	417	373	407	378	371	401	361	388	347	391	389	361	419	413	410	460	365	
Falkirk	1,901	2,033	2,083	2,275	2,348	2,281	2,417	2,545	2,444	2,423	2,516	2,465	2,420	2,398	2,311	2,254	2,118	2,141	2,075	1,982	1,876	1,885	1,883	2,010	2,017	2,025	2,068	2,259	1,661	1,661	
Fife	3,839	3,998	4,371	4,808	5,084	5,173	5,480	5,570	5,627	5,527	5,616	5,610	5,545	5,516	5,420	5,306	5,207	5,111	4,933	4,908	4,715	4,720	4,526	4,468	4,627	4,689	4,968	5,208	5,722	4,442	
Glasgow City	9,028	8,549	8,856	9,083	9,304	8,762	8,972	8,940	8,690	8,955	8,869	9,105	8,867	8,853	8,578	8,205	8,180	7,589	7,592	7,476	7,100	6,640	6,444	5,982	5,853	5,818	5,848	6,100	6,280	5,081	
Highland	2,265	2,260	2,517	2,733	2,858	2,927	2,927	3,155	3,313	3,371	3,565	3,556	3,454	3,299	3,483	3,377	3,294	3,318	3,218	3,202	3,165	3,203	3,226	3,156	3,190	3,181	3,341	3,508	3,478	2,808	
Inverclyde	864	827	988	1,011	1,028	1,079	1,106	1,224	1,271	1,274	1,267	1,352	1,413	1,404	1,298	1,300	1,245	1,191	1,221	1,175	1,095	1,056	1,037	1,169	1,068	1,072	1,114	1,176	1,007	1,007	
Midlothian	822	869	896	1,015	1,156	1,217	1,167	1,304	1,264	1,267	1,280	1,268	1,358	1,263	1,226	1,283	1,244	1,194	1,162	1,109	1,070	1,085	1,094	1,050	1,061	1,108	1,186	1,157	1,306	1,030	
Moray	905	971	1,083	1,220	1,332	1,315	1,410	1,377	1,465	1,420	1,405	1,363	1,474	1,379	1,355	1,287	1,244	1,252	1,187	1,240	1,140	1,186	1,185	1,073	1,217	1,231	1,157	1,263	1,384	1,046	
North Ayrshire	1,336	1,559	1,499	1,663	1,848	1,927	1,944	1,983	2,114	2,041	2,141	2,173	2,123	2,094	1,975	1,966	2,045	1,962	1,927	1,896	1,807	1,806	1,849	1,787	1,784	1,874	1,925	2,065	2,253	1,678	
North Lanarkshire	3,973	4,149	4,405	4,773	4,846	5,148	5,268	5,281	5,350	5,313	5,427	5,180	5,110	5,237	4,946	4,774	4,695	4,696	4,621	4,411	4,230	4,266	4,213	3,895	3,826	4,028	4,024	4,209	4,362	3,470	
Orkney Islands	210	183	213	222	269	297	250	315	340	335	314	330	329	301	313	302	293	275	315	298	278	286	306	281	295	269	308	308	331	254	
Perth & Kinross	1,299	1,498	1,534	1,724	1,772	1,745	1,934	2,091	2,118	2,180	2,245	2,288	2,272	2,145	2,156	1,946	2,146	2,048	1,971	1,924	1,946	1,936	2,031	1,865	1,929	2,045	2,059	2,196	2,357	1,882	
Renfrewshire	1,829	1,925	2,033	2,210	2,418	2,550	2,618	2,754	2,768	2,831	2,901	2,900	2,735	2,964	2,902	2,603	2,626	2,605	2,389	2,357	2,194	2,291	2,180	2,074	2,302	2,163	2,282	2,238	2,584	1,893	
Scottish Borders	1,087	1,053	1,200	1,435	1,491	1,536	1,644	1,727	1,769	1,788	1,774	1,782	1,880	1,732	1,751	1,742	1,773	1,700	1,601	1,570	1,526	1,542	1,539	1,489	1,553	1,573	1,643	1,755	1,991	1,505	
Shetland Islands	287	232	309	323	315	302	313	331	300	356	316	388	355	373	336	323	297	309	279	314	328	302	316	299	315	319	314	305	341	251	
South Ayrshire	1,086	1,115	1,207	1,398	1,454	1,461	1,378	1,589	1,598	1,611	1,761	1,768	1,644	1,790	1,761	1,669	1,684	1,730	1,648	1,590	1,577	1,562	1,587	1,559	1,552	1,553	1,706	1,672	1,895	1,503	
South Lanarkshire	3,540	3,597	3,977	4,185	4,500	4,473	4,818	4,866	4,894	4,804	4,944	5,197	4,975	4,945	4,865	4,910	4,775	4,723	4,591	4,471	4,302	4,285	4,104	4,051	3,867	3,864	4,062	4,137	4,475	3,443	
Stirling	836	805	1,004	1,125	1,268	1,303	1,268	1,339	1,305	1,393	1,417	1,432	1,397	1,337	1,382	1,317	1,260	1,213	1,166	1,128	1,083	1,150	1,132	1,121	1,146	1,141	1,158	1,248	1,412	1,055	
West Dunbartonshire	1,031	1,014	1,081	1,138	1,279	1,282	1,384	1,427	1,444	1,433	1,471	1,501	1,498	1,354	1,469	1,433	1,360	1,419	1,270	1,350	1,306	1,230	1,141	1,212	1,159	1,102	1,169	1,276	1,270	1,078	
West Lothian	2,078	2,220	2,396	2,585	2,911	2,696	2,942	3,005	3,124	2,850	3,028	2,809	2,791	2,733	2,675	2,550	2,630	2,490	2,263	2,271	2,120	2,089	2,086	2,077	2,100	2,020	2,142	2,233	2,277	1,866	
NHS Board areas																															
Ayrshire & Arran	3,779	3,954	4,180	4,750	5,030	5,113	5,223	5,469	5,698	5,526	5,955	5,853	5,666	5,692	5,562	5,355	5,528	5,389	5,306	5,060	4,923	4,928	5,046	4,837	4,920	5,120	5,301	5,497	6,091	4,616	
Borders	1,087	1,053	1,200	1,435	1,491	1,536	1,644	1,727	1,769	1,788	1,776	1,782	1,880	1,733	1,751	1,742	1,773	1,700	1,602	1,570	1,526	1,542	1,539	1,489	1,553	1,573	1,643	1,755	1,991	1,505	
Dumfries & Galloway	1,293	1,396	1,485	1,733	1,862	1,879	2,048	2,016	2,156	2,238	2,362	2,329	2,423	2,370	2,287	2,215	2,173	2,176	2,098	2,130	2,075	2,072	2,025	2,050	2,146	2,292	2,329	2,412	2,618	2,060	
Fife	3,839	3,998	4,371	4,810	5,081	5,173	5,478	5,568	5,624	5,525	5,614	5,611	5,542	5,513	5,419	5,306	5,206	5,110	4,932	4,908	4,715	4,720	4,526	4,467	4,627	4,686	4,967	5,207	5,719	4,440	
Forth Valley	3,278	3,378	3,723	4,077	4,244	4,299	4,496	4,644	4,723	4,610																					

Table 2 (continued)

MALES (continued)

Area	Age																														
	31	32	33	34	35	36	37	38	39	40	41	42	43	44	45	46	47	48	49	50	51	52	53	54	55	56	57	58	59	60	
SCOTLAND	29,248	29,902	31,727	33,533	35,753	35,524	37,127	37,676	39,067	38,137	39,512	39,236	38,929	39,053	38,088	37,331	36,766	35,902	35,219	34,603	33,277	33,026	32,478	31,352	31,952	32,434	33,402	34,411	37,178	28,722	
Council areas																															
Aberdeen City	1,511	1,516	1,574	1,570	1,527	1,462	1,587	1,493	1,655	1,465	1,508	1,557	1,563	1,501	1,431	1,567	1,495	1,490	1,451	1,443	1,438	1,429	1,307	1,285	1,287	1,312	1,319	1,360	1,440	1,063	
Aberdeenshire	1,097	1,230	1,395	1,415	1,713	1,701	1,865	1,855	1,961	1,945	1,971	1,991	1,983	1,969	1,927	1,831	1,895	1,969	1,834	1,839	1,781	1,831	1,684	1,647	1,751	1,732	1,844	1,916	1,931	1,555	
Angus	505	542	643	688	680	664	722	722	781	740	838	880	828	903	764	850	779	768	727	761	705	739	801	711	768	820	782	879	940	698	
Argyll & Bute	458	448	560	572	552	601	613	710	729	674	708	697	708	703	726	679	649	668	702	696	624	638	624	579	658	655	697	661	805	598	
Clackmannanshire	273	250	283	323	313	354	417	369	424	381	392	395	401	370	381	382	382	300	335	304	324	314	312	302	296	340	374	358	377	308	
Dumfries & Galloway	600	668	670	860	894	915	964	919	1,058	1,083	1,164	1,118	1,178	1,134	1,105	1,044	1,038	1,062	1,000	1,031	1,016	1,043	967	997	1,075	1,144	1,166	1,235	1,297	1,026	
Dundee City	721	737	740	773	892	821	862	791	849	907	925	948	965	917	899	958	901	929	910	851	853	833	753	820	795	758	898	855	996	730	
East Ayrshire	679	618	723	819	836	821	917	866	956	922	985	931	905	871	871	771	905	818	820	765	743	773	804	722	807	867	814	850	932	706	
East Dunbartonshire	334	418	453	488	548	646	650	688	724	696	831	783	847	851	850	804	865	822	835	793	750	706	731	645	704	712	695	743	822	645	
East Lothian	478	440	556	526	658	651	736	702	765	723	798	718	759	736	753	688	718	676	712	678	597	647	602	548	592	575	563	651	691	562	
East Renfrewshire	272	390	355	442	490	538	583	535	633	681	658	724	741	733	732	712	788	701	699	705	628	571	573	586	518	580	574	600	641	525	
Edinburgh, City of	3,790	3,676	3,587	3,498	3,800	3,560	3,414	3,582	3,546	3,308	3,468	3,227	3,315	3,232	3,260	3,068	3,024	2,943	2,920	2,867	2,695	2,617	2,557	2,549	2,495	2,510	2,593	2,621	2,903	2,000	
Eilean Siar	132	120	153	194	156	149	197	205	212	178	188	204	194	216	186	212	209	187	210	173	194	185	215	193	182	214	218	229	238	196	
Falkirk	900	1,012	991	1,087	1,105	1,088	1,164	1,206	1,247	1,160	1,260	1,208	1,160	1,168	1,121	1,144	1,023	1,100	1,003	953	885	927	914	877	944	1,000	992	1,004	1,134	814	
Fife	1,826	1,971	2,130	2,336	2,414	2,527	2,637	2,672	2,803	2,659	2,690	2,731	2,630	2,672	2,695	2,653	2,537	2,432	2,463	2,387	2,295	2,337	2,227	2,190	2,243	2,274	2,388	2,491	2,833	2,166	
Glasgow City	4,555	4,310	4,446	4,540	4,618	4,312	4,372	4,257	4,245	4,275	4,216	4,227	4,277	4,280	4,022	3,979	3,924	3,559	3,747	3,559	3,599	3,253	3,260	2,936	2,948	2,882	2,932	3,041	3,073	2,469	
Highland	1,131	1,068	1,209	1,307	1,355	1,342	1,341	1,532	1,596	1,640	1,684	1,706	1,697	1,658	1,661	1,694	1,586	1,613	1,591	1,592	1,551	1,629	1,568	1,557	1,574	1,593	1,695	1,762	1,755	1,407	
Inverclyde	404	390	480	490	501	495	496	533	608	567	628	622	693	691	644	600	566	585	594	583	540	501	512	502	581	533	528	529	574	496	
Midlothian	369	403	407	458	531	601	521	588	607	573	592	583	589	589	568	612	580	554	524	553	505	530	527	518	489	550	576	556	609	489	
Moray	442	540	576	625	667	684	758	739	734	741	699	710	757	705	697	670	640	645	572	637	550	577	597	541	600	609	578	623	649	534	
North Ayrshire	569	779	695	738	819	922	917	909	956	933	1,012	1,015	929	1,018	939	922	972	906	915	907	886	858	860	876	883	914	922	989	1,088	833	
North Lanarkshire	1,938	1,995	2,124	2,178	2,315	2,452	2,514	2,517	2,603	2,556	2,591	2,517	2,354	2,592	2,385	2,241	2,229	2,195	2,267	2,111	2,015	2,050	2,057	1,887	1,831	1,975	1,948	1,999	2,155	1,688	
Orkney Islands	92	79	110	98	111	149	130	166	180	167	151	170	180	163	158	150	145	143	146	139	139	161	144	139	147	137	146	176	122		
Perth & Kinross	640	698	718	801	779	817	911	956	1,023	1,078	1,063	1,159	1,108	1,044	1,045	971	1,060	1,008	934	911	969	921	990	887	928	1,015	1,006	1,110	1,155	959	
Renfrewshire	875	876	942	978	1,132	1,171	1,245	1,315	1,273	1,315	1,407	1,402	1,291	1,441	1,330	1,267	1,272	1,245	1,163	1,152	1,029	1,094	1,066	1,012	1,078	1,060	1,084	1,089	1,288	878	
Scottish Borders	522	480	547	682	698	750	822	865	853	881	886	831	911	883	865	842	832	828	770	764	784	770	754	748	771	781	794	853	973	746	
Shetland Islands	146	95	163	159	159	147	154	156	159	180	165	191	193	186	162	165	148	149	133	167	155	166	152	166	162	169	170	178	200	132	
South Ayrshire	516	563	595	684	707	670	661	761	780	738	859	845	737	874	854	827	801	803	779	780	779	749	776	757	753	751	860	809	936	716	
South Lanarkshire	1,658	1,702	1,862	1,946	2,135	2,126	2,320	2,325	2,307	2,294	2,329	2,378	2,347	2,355	2,373	2,394	2,247	2,352	2,145	2,148	2,028	2,074	2,014	1,976	1,937	1,881	1,995	1,957	2,159	1,655	
Stirling	378	382	430	523	599	580	547	614	607	653	681	693	627	651	659	664	655	597	591	562	526	521	553	567	570	570	581	612	690	545	
West Dunbartonshire	496	486	507	519	615	583	641	691	684	643	717	700	706	633	696	727	635	683	599	656	621	568	571	606	558	532	586	593	614	558	
West Lothian	941	1,020	1,103	1,216	1,434	1,225	1,449	1,437	1,509	1,381	1,448	1,375	1,356	1,314	1,319	1,243	1,266	1,172	1,128	1,136	1,048	1,006	1,006	1,026	1,027	994	1,054	1,112	1,104	903	
NHS Board areas																															
Ayrshire & Arran	1,764	1,960	2,013	2,241	2,362	2,413	2,495	2,536	2,692	2,593	2,856	2,791	2,571	2,763	2,664	2,520	2,678	2,527	2,514	2,452	2,408	2,380	2,440	2,355	2,443	2,532	2,596	2,648	2,956	2,255	
Borders	522	480	547	682	698	750	822	865	853	881	887	831	911	884	865	842	832	828	770	764	784	770	754	748	771	781	794	853	973	746	
Dumfries & Galloway	600	668	670	860	894	915	964	919	1,058	1,083	1,164	1,118	1,178	1,134	1,105	1,044	1,038	1,062	1,000	1,031	1,016	1,043	967	997	1,075	1,144	1,166	1,235	1,297	1,026	
Fife	1,826	1,971	2,130	2,338	2,412	2,527	2,637	2,672	2,802	2,659	2,690	2,731	2,627	2,671	2,694	2,653	2,536	2,432	2,463	2,387	2,295	2,336	2,226	2,189	2,243	2,272	2,388	2,490	2,833	2,166	
Forth Valley	1,546	1,642	1,704	1,928	2,015	2,019	2,127	2,184	2,278	2,190	2,329	2,293	2,190	2,180	2,160	2,188	2,060	1,996	1,928	1,816	1,762	1,762	1,771	1,744	1,807	1,908	1,944	1,968	2,202	1,664	
Grampian	3,050	3,286	3,545	3,610	3,906	3,847	4,210	4,087	4,350	4,151	4,178	4,258	4,303	4,175	4,055	4,068	4,030	4,104	3,857	3,919	3,769	3,837	3,588	3,473	3,638	3,653	3,741	3,899	4,020	3,152	
Greater Glasgow & Clyde ¹	7,348	7,280	7,658	7,945	8,400	8,254	8,577	8,612	8,700	8,694	8,979	8,986	9,086	9,187	8,770	8,611	8,623	8,162	8,143	7,941	7,660	7,202	7,225	6,772	6,832	6,777	6,842	7,082	7,511	5,960	
Highland ¹	1,589	1,516	1,769	1,879	1,908	1,943	1,954	2,242	2,325	2,314	2,392	2,403	2,405	2,361	2,387	2															

Table 2 (continued)

FEMALES (continued)

Area	Age																													
	31	32	33	34	35	36	37	38	39	40	41	42	43	44	45	46	47	48	49	50	51	52	53	54	55	56	57	58	59	60
SCOTLAND	31,105	31,539	33,956	36,641	38,635	38,520	39,978	41,091	41,404	41,477	42,544	42,720	42,473	41,047	40,668	39,400	39,151	38,222	37,178	35,859	34,616	34,200	33,536	32,438	33,179	33,364	34,469	35,650	38,760	29,788
Council areas																														
Aberdeen City	1,333	1,380	1,411	1,454	1,519	1,517	1,509	1,452	1,464	1,534	1,620	1,567	1,522	1,549	1,485	1,592	1,587	1,486	1,416	1,390	1,367	1,288	1,211	1,268	1,233	1,232	1,359	1,305	1,439	1,057
Aberdeenshire	1,250	1,477	1,566	1,704	1,906	1,828	1,985	1,916	2,008	2,007	2,076	2,105	2,029	1,892	1,940	1,892	1,872	1,843	1,833	1,813	1,803	1,825	1,732	1,646	1,681	1,676	1,717	1,759	1,950	1,516
Angus	549	595	711	753	791	732	816	797	878	857	918	889	875	890	878	908	829	798	824	788	748	780	796	751	771	784	899	875	1,043	706
Argyll & Bute	433	419	493	548	550	658	634	665	674	677	762	720	708	670	675	705	694	672	649	648	616	632	597	642	730	671	717	748	943	677
Clackmannanshire	277	292	350	363	319	370	400	396	452	417	424	402	410	402	390	363	368	379	340	355	348	357	323	310	372	347	361	374	409	301
Dumfries & Galloway	693	728	815	873	968	964	1,084	1,097	1,098	1,155	1,198	1,211	1,245	1,236	1,182	1,171	1,135	1,114	1,098	1,099	1,059	1,029	1,058	1,053	1,071	1,148	1,163	1,177	1,321	1,034
Dundee City	808	804	842	862	985	933	1,011	971	1,017	1,061	1,097	1,059	1,141	1,119	1,146	1,063	990	1,020	994	891	883	806	886	834	900	922	870	936	1,069	783
East Ayrshire	678	662	751	870	892	904	984	1,031	1,030	952	1,068	981	994	937	955	949	894	879	911	809	796	787	806	769	777	826	856	910	1,011	729
East Dunbartonshire	419	468	557	659	648	702	765	787	865	858	883	964	964	966	941	920	947	875	949	820	789	794	784	710	728	774	803	759	852	672
East Lothian	524	524	579	654	744	752	785	827	866	747	804	879	836	750	784	770	733	729	701	663	662	612	631	595	658	639	632	706	709	547
East Renfrewshire	362	445	511	501	627	618	672	753	763	760	815	827	830	815	766	830	757	743	728	681	703	647	592	609	579	580	630	644	713	476
Edinburgh, City of	3,843	3,612	3,598	3,678	3,749	3,531	3,489	3,601	3,578	3,522	3,517	3,509	3,621	3,420	3,340	3,260	3,178	3,103	3,179	2,739	2,691	2,661	2,613	2,524	2,669	2,713	2,743	2,669	3,091	2,278
Eilean Siar	118	125	155	161	150	178	204	214	187	195	183	203	200	201	187	195	169	184	191	188	194	162	176	196	179	205	195	181	222	169
Falkirk	1,001	1,021	1,092	1,188	1,243	1,193	1,253	1,339	1,297	1,263	1,256	1,257	1,260	1,230	1,190	1,110	1,095	1,041	1,072	1,029	991	956	969	956	1,066	1,017	1,033	1,064	1,125	847
Fife	2,013	2,027	2,241	2,472	2,670	2,646	2,843	2,898	2,824	2,868	2,926	2,879	2,915	2,844	2,725	2,653	2,670	2,679	2,470	2,521	2,420	2,383	2,299	2,278	2,384	2,415	2,580	2,717	2,889	2,276
Glasgow City	4,473	4,239	4,410	4,543	4,686	4,450	4,600	4,683	4,445	4,680	4,653	4,878	4,590	4,573	4,556	4,226	4,256	4,030	3,845	3,917	3,501	3,387	3,184	3,046	2,905	2,936	2,916	3,059	3,207	2,612
Highland	1,134	1,192	1,308	1,426	1,503	1,585	1,586	1,623	1,717	1,731	1,881	1,850	1,757	1,641	1,822	1,683	1,708	1,705	1,627	1,610	1,614	1,574	1,658	1,599	1,616	1,588	1,646	1,746	1,723	1,401
Inverclyde	460	437	508	521	527	584	610	691	663	707	639	730	720	713	654	700	679	606	627	592	555	555	525	525	588	535	544	585	602	511
Midlothian	453	466	489	557	625	616	646	716	657	694	688	685	769	674	658	671	664	640	638	556	555	567	532	572	558	610	601	697	541	
Moray	463	431	507	595	665	631	652	638	731	679	706	653	717	674	658	617	604	607	615	603	590	609	588	532	617	622	579	640	735	512
North Ayrshire	767	780	804	925	1,029	1,005	1,027	1,074	1,158	1,108	1,129	1,158	1,194	1,076	1,036	1,044	1,073	1,056	1,012	989	921	948	989	911	901	960	1,003	1,076	1,165	845
North Lanarkshire	2,035	2,154	2,281	2,595	2,531	2,696	2,754	2,764	2,747	2,757	2,836	2,663	2,756	2,645	2,561	2,533	2,466	2,501	2,354	2,300	2,215	2,216	2,156	2,008	1,995	2,053	2,076	2,210	2,207	1,782
Orkney Islands	118	104	103	124	158	148	120	149	160	168	163	160	149	138	155	152	148	132	169	159	139	125	162	142	148	137	132	162	155	132
Perth & Kinross	659	800	816	923	993	928	1,023	1,135	1,095	1,102	1,182	1,129	1,164	1,101	1,111	975	1,086	1,040	1,037	1,013	980	1,007	1,041	978	1,001	1,030	1,053	1,086	1,202	923
Renfrewshire	954	1,049	1,091	1,232	1,286	1,379	1,373	1,439	1,495	1,516	1,494	1,498	1,444	1,523	1,572	1,336	1,354	1,360	1,226	1,205	1,165	1,197	1,114	1,062	1,224	1,103	1,198	1,149	1,296	1,015
Scottish Borders	565	573	653	733	793	786	822	862	916	907	888	951	969	849	886	900	941	872	832	806	742	772	785	741	782	792	849	902	1,018	759
Shetland Islands	141	137	146	164	156	155	159	175	141	176	151	197	162	187	164	158	149	160	146	147	173	136	164	133	153	150	144	127	141	119
South Ayrshire	570	552	612	714	747	791	717	828	818	873	902	923	907	916	907	842	883	927	869	810	798	813	811	802	799	802	846	863	959	787
South Lanarkshire	1,882	1,895	2,115	2,239	2,365	2,347	2,498	2,541	2,587	2,507	2,615	2,819	2,628	2,590	2,492	2,516	2,528	2,371	2,446	2,323	2,274	2,211	2,090	2,075	1,930	1,983	2,067	2,180	2,316	1,788
Stirling	458	423	574	602	669	723	721	725	698	740	736	739	770	686	723	653	605	616	575	566	557	629	579	554	576	571	577	636	722	510
West Dunbartonshire	535	528	574	619	664	699	743	736	760	790	754	801	792	721	773	706	725	736	671	694	685	662	570	606	601	570	583	683	656	520
West Lothian	1,137	1,200	1,293	1,369	1,477	1,471	1,493	1,568	1,615	1,469	1,580	1,434	1,435	1,419	1,356	1,307	1,364	1,318	1,135	1,135	1,072	1,083	1,080	1,051	1,073	1,026	1,088	1,121	1,173	963
NHS Board areas																														
Ayrshire & Arran	2,015	1,994	2,167	2,509	2,668	2,700	2,728	2,933	3,006	2,933	3,099	3,062	3,095	2,929	2,898	2,835	2,850	2,862	2,792	2,608	2,515	2,548	2,606	2,482	2,477	2,588	2,705	2,849	3,135	2,361
Borders	565	573	653	753	793	786	822	862	916	907	888	951	969	849	886	900	941	872	832	806	742	772	785	741	782	792	849	902	1,018	759
Dumfries & Galloway	693	728	815	873	968	964	1,084	1,097	1,098	1,155	1,198	1,211	1,245	1,236	1,182	1,171	1,135	1,114	1,098	1,099	1,059	1,029	1,058	1,053	1,071	1,148	1,163	1,177	1,321	1,034
Fife	2,013	2,027	2,241	2,472	2,669	2,646	2,841	2,896	2,822	2,866	2,924	2,880	2,915	2,842	2,725	2,653	2,670	2,678	2,469	2,521	2,420	2,381	2,299	2,278	2,384	2,414	2,579	2,717	2,886	2,274
Forth Valley	1,732	1,736	2,019	2,149	2,229	2,280	2,369	2,460	2,445	2,420	2,411	2,397	2,439	2,319	2,303	2,123	2,062	2,036	1,979	1,947	1,893	1,939	1,868	1,818	2,010	1,932	1,970	2,070	2,254	1,656
Grampian	3,046	3,288	3,484	3,753	4,090	3,976	4,146	4,006	4,203	4,220	4,402	4,325	4,268	4,115	4,083	4,101	4,063	3,936	3,864	3,806	3,760	3,722	3,531	3,446	3,531	3,530	3,655	3,704	4,124	3,085
Greater Glasgow & Clyde ¹	7,709	7,672	8,219	8,679	9,056	9,028	9,382	9,674	9,600	9,922	9,894	10,343	9,978	9,911	9,874	9,280	9,332	8,933	8,659	8,479	7,950	7,788	7,280	7,060	7,069	6,950	7,199	7,410	7,837	6,254
Highland ¹	1,567	1,611	1,801	1,974	2																									

Table 2 (continued)

PERSONS (continued)

Area	Age																														
	61	62	63	64	65	66	67	68	69	70	71	72	73	74	75	76	77	78	79	80	81	82	83	84	85	86	87	88	89	90+	
SCOTLAND	56,110	57,437	55,788	51,725	48,688	50,153	49,406	48,404	46,718	45,815	44,279	41,897	40,270	40,114	38,195	36,286	34,031	30,652	29,307	28,429	25,543	23,897	20,791	19,890	18,529	17,524	10,819	8,381	7,537	32,413	
Council areas																															
Aberdeen City	1,799	1,902	1,951	1,859	1,713	1,825	1,729	1,753	1,698	1,679	1,641	1,668	1,591	1,639	1,510	1,457	1,373	1,216	1,231	1,117	1,036	957	836	794	811	756	380	323	277	1,274	
Aberdeenshire	2,753	2,786	2,661	2,486	2,149	2,370	2,242	2,147	2,009	2,016	1,879	1,803	1,712	1,633	1,564	1,532	1,447	1,310	1,218	1,154	1,146	1,087	874	882	753	810	456	383	339	1,557	
Angus	1,411	1,423	1,378	1,284	1,195	1,258	1,153	1,157	1,169	1,139	1,100	1,025	921	983	996	892	822	809	707	729	626	606	542	500	417	426	274	200	206	895	
Argyll & Bute	1,261	1,285	1,199	1,195	1,108	1,202	1,113	1,019	1,042	985	946	889	874	869	791	742	729	664	589	585	556	504	441	403	406	373	256	135	163	813	
Clackmannanshire	595	614	566	512	474	460	455	461	495	420	398	354	353	362	303	347	286	266	237	234	189	216	181	189	169	138	99	66	57	214	
Dumfries & Galloway	2,054	2,122	2,096	1,950	1,869	1,862	1,807	1,724	1,772	1,679	1,543	1,526	1,532	1,431	1,372	1,338	1,265	1,107	1,154	1,010	954	829	781	702	633	571	363	314	281	1,125	
Dundee City	1,514	1,439	1,444	1,367	1,348	1,426	1,421	1,467	1,311	1,355	1,262	1,261	1,223	1,256	1,199	1,128	1,079	963	880	896	916	826	695	683	613	594	326	225	225	1,034	
East Ayrshire	1,464	1,433	1,381	1,305	1,245	1,251	1,227	1,199	1,175	1,093	1,097	1,033	1,036	963	931	815	760	722	646	683	583	502	477	454	431	390	260	199	152	688	
East Dunbartonshire	1,311	1,273	1,213	1,107	1,085	1,109	1,130	1,095	1,096	999	1,018	978	906	898	834	809	763	702	653	599	545	506	461	426	377	356	215	192	134	616	
East Lothian	1,060	1,141	1,033	1,022	966	925	900	998	857	857	845	826	757	798	732	693	700	603	600	613	513	453	449	407	392	368	198	164	161	685	
East Renfrewshire	975	984	953	862	874	844	845	906	822	839	787	779	724	758	704	660	615	565	557	567	442	452	369	402	334	316	202	191	129	564	
Edinburgh, City of	4,025	4,047	3,945	3,562	3,442	3,607	3,556	3,620	3,464	3,522	3,351	3,263	3,267	3,173	3,183	2,988	2,815	2,666	2,611	2,438	2,217	2,159	1,937	1,921	1,780	1,696	1,050	766	708	3,199	
Eilean Siar	331	344	340	302	336	323	308	304	290	270	282	274	263	249	210	218	227	184	176	185	167	172	151	162	120	133	73	53	50	230	
Falkirk	1,669	1,667	1,669	1,500	1,483	1,439	1,568	1,448	1,346	1,292	1,282	1,183	1,119	1,091	1,073	1,002	940	820	823	753	719	672	580	530	505	484	267	209	205	784	
Fife	4,292	4,360	4,092	3,851	3,453	3,561	3,520	3,317	3,391	3,286	3,124	2,956	2,810	2,688	2,602	2,604	2,303	2,162	2,178	2,094	1,841	1,785	1,503	1,448	1,359	1,279	859	634	557	2,526	
Glasgow City	4,861	4,887	4,956	4,581	4,531	4,660	4,672	4,679	4,580	4,516	4,698	4,224	4,123	4,385	4,031	3,756	3,580	3,181	2,966	2,957	2,577	2,386	2,115	2,032	1,926	1,815	1,114	852	788	3,325	
Highland	2,732	2,835	2,783	2,588	2,307	2,407	2,241	2,278	2,088	2,044	1,936	1,891	1,803	1,791	1,714	1,606	1,581	1,385	1,346	1,288	1,155	1,118	922	882	843	710	483	390	316	1,512	
Inverclyde	893	983	946	816	829	809	826	833	757	783	722	680	676	714	693	622	603	494	465	491	415	383	349	311	322	289	188	154	152	537	
Midlothian	986	956	870	789	777	783	786	779	712	738	692	651	569	626	589	544	536	432	432	381	358	349	290	255	281	286	122	114	90	468	
Moray	1,040	1,057	1,028	996	908	937	873	906	850	827	881	834	765	695	698	634	617	579	517	506	482	412	369	350	297	314	205	152	146	510	
North Ayrshire	1,616	1,739	1,637	1,554	1,452	1,575	1,431	1,467	1,314	1,302	1,260	1,233	1,177	1,124	1,077	992	941	837	730	783	660	588	560	535	526	481	285	231	204	867	
North Lanarkshire	3,327	3,557	3,487	3,082	2,975	3,116	3,079	2,992	2,782	2,769	2,615	2,463	2,385	2,234	2,107	2,108	1,889	1,634	1,554	1,517	1,279	1,246	1,020	981	906	775	570	418	352	1,415	
Orkney Islands	246	295	278	283	210	283	226	222	196	182	194	170	148	144	152	159	148	128	99	111	110	100	74	90	83	65	40	29	163		
Perth & Kinross	1,795	1,778	1,755	1,709	1,470	1,551	1,632	1,422	1,473	1,417	1,441	1,282	1,227	1,259	1,236	1,139	1,098	989	1,027	928	827	843	722	693	611	582	355	314	246	1,220	
Renfrewshire	1,894	2,034	1,831	1,737	1,694	1,607	1,701	1,633	1,610	1,556	1,504	1,389	1,239	1,328	1,307	1,232	1,107	972	920	910	829	685	653	606	485	566	309	241	228	963	
Scottish Borders	1,391	1,493	1,518	1,255	1,211	1,252	1,344	1,219	1,181	1,148	1,102	1,054	988	997	969	913	836	813	751	731	668	588	543	513	509	453	291	220	196	771	
Shetland Islands	278	262	282	260	209	228	189	192	195	176	167	172	143	145	132	138	142	124	111	96	121	98	88	91	86	86	34	43	35	160	
South Ayrshire	1,517	1,451	1,455	1,385	1,230	1,324	1,218	1,247	1,267	1,241	1,175	1,095	1,109	1,065	1,016	947	867	775	767	859	709	665	575	577	501	499	273	235	296	959	
South Lanarkshire	3,305	3,448	3,413	3,122	2,980	3,028	2,967	2,941	2,845	2,838	2,574	2,487	2,446	2,377	2,275	2,142	2,059	1,791	1,711	1,657	1,411	1,395	1,141	1,042	999	966	612	466	393	1,625	
Stirling	934	1,041	970	934	862	864	901	804	846	800	750	693	683	689	620	607	524	523	464	445	478	400	330	338	334	301	191	127	144	562	
West Dunbartonshire	980	1,048	955	909	820	816	869	813	797	787	793	720	760	739	672	666	612	523	520	500	446	402	334	323	332	288	222	164	138	548	
West Lothian	1,801	1,753	1,703	1,561	1,483	1,451	1,477	1,362	1,288	1,260	1,220	1,051	941	1,011	903	856	767	713	667	612	568	513	429	368	388	328	231	166	140	604	
NHS Board areas																															
Ayrshire & Arran	4,597	4,623	4,473	4,244	3,927	4,150	3,876	3,913	3,756	3,636	3,532	3,351	3,322	3,152	3,024	2,754	2,568	2,334	2,143	2,325	1,952	1,755	1,612	1,566	1,458	1,370	818	665	652	2,514	
Borders	1,392	1,493	1,518	1,255	1,211	1,252	1,344	1,219	1,181	1,148	1,102	1,054	988	997	969	913	836	813	751	731	668	589	543	513	510	453	291	220	196	771	
Dumfries & Galloway	2,054	2,122	2,096	1,950	1,869	1,862	1,807	1,724	1,772	1,679	1,543	1,526	1,532	1,431	1,372	1,338	1,265	1,107	1,154	1,010	954	829	781	702	633	571	363	314	281	1,125	
Fife	4,292	4,358	4,090	3,850	3,453	3,560	3,519	3,316	3,391	3,286	3,123	2,955	2,809	2,688	2,601	2,604	2,302	2,162	2,178	2,094	1,841	1,784	1,503	1,448	1,359	1,279	859	634	557	2,526	
Forth Valley	3,192	3,315	3,204	2,947	2,816	2,761	2,915	2,707	2,682	2,506	2,427	2,225	2,157	2,137	1,991	1,951	1,743	1,605	1,525	1,429	1,384	1,288	1,087	1,056	1,006	922	549	398	405	1,551	
Grampian	5,592	5,745	5,640	5,341	4,770	5,132	4,844	4,806	4,557	4,522	4,401	4,305	4,068	3,967	3,772	3,623	3,437	3,105	2,966	2,777	2,664	2,456	2,079	2,026	1,861	1,880	1,041	858	762	3,341	
Greater Glasgow & Clyde ¹	11,658	12,030	11,638	10,664	10,492	10,547	10,726	10,609	10,315	10,128	10,132	9,351	8,993	9,352	8,746	8,231	7,781	6,854	6,489	6,399	5,584	5,126	4,588	4,366	4,048	3,864	2,394	1,900	1,675	6,888	
Highland ¹	3,993	4,120	3,982	3,783	3,415	3,6																									

Table 2 (continued)

MALES (continued)

Area	Age																													
	61	62	63	64	65	66	67	68	69	70	71	72	73	74	75	76	77	78	79	80	81	82	83	84	85	86	87	88	89	90+
SCOTLAND	27,271	27,918	26,592	24,525	22,854	23,540	23,164	22,591	21,501	20,937	19,994	18,651	17,738	17,382	16,320	15,152	14,076	12,457	11,734	11,035	9,721	8,812	7,239	6,836	6,150	5,691	3,272	2,346	2,103	7,629
Council areas																														
Aberdeen City	848	918	957	889	810	839	791	851	783	736	748	770	688	703	636	603	556	449	519	428	389	323	266	258	268	283	122	93	93	300
Aberdeenshire	1,395	1,441	1,330	1,222	1,054	1,191	1,117	1,074	980	997	923	840	812	744	710	686	648	551	541	466	495	421	313	333	270	261	152	109	96	411
Angus	673	696	666	618	591	584	555	532	557	559	498	463	425	424	455	416	323	359	278	288	245	219	196	185	130	162	104	64	62	213
Argyll & Bute	660	664	597	591	555	564	536	495	497	463	442	407	397	390	372	305	332	294	240	229	231	187	172	129	131	134	72	33	51	196
Clackmannanshire	284	310	267	240	221	221	200	237	224	187	185	180	177	180	130	145	119	124	101	95	65	76	63	66	48	43	31	15	26	49
Dumfries & Galloway	994	1,045	978	944	893	913	846	857	861	799	710	702	740	661	644	591	532	462	479	452	400	306	301	249	233	215	123	94	80	288
Dundee City	746	751	727	660	604	695	670	677	591	606	557	538	523	506	505	460	466	393	343	317	355	320	236	249	222	190	93	61	67	257
East Ayrshire	704	705	666	588	589	560	627	576	523	502	500	462	451	408	405	329	323	315	273	257	235	199	175	149	141	135	86	53	48	161
East Dunbartonshire	620	594	565	517	483	525	507	503	502	474	464	445	405	420	363	369	337	283	251	227	196	190	179	139	129	130	68	59	45	165
East Lothian	525	541	500	501	466	413	409	489	411	378	365	380	329	383	333	286	297	263	244	254	218	163	165	141	123	112	74	41	47	163
East Renfrewshire	460	439	421	400	408	384	398	418	380	366	336	317	312	304	273	231	217	194	245	175	163	128	142	110	93	53	51	39	116	
Edinburgh, City of	1,971	1,956	1,859	1,646	1,621	1,676	1,625	1,602	1,572	1,607	1,480	1,453	1,409	1,297	1,344	1,216	1,131	1,063	977	891	827	791	664	665	587	541	343	229	189	763
Eilean Siar	168	186	160	156	153	146	160	148	139	125	150	130	102	122	93	92	99	68	71	74	62	61	57	46	30	44	14	10	10	42
Falkirk	826	781	830	679	697	674	718	680	618	606	595	548	488	482	461	403	399	334	338	300	249	264	212	209	152	157	72	49	56	214
Fife	2,114	2,062	1,950	1,880	1,664	1,664	1,676	1,578	1,575	1,477	1,439	1,352	1,287	1,211	1,100	1,065	967	896	947	798	666	670	479	502	473	419	240	199	152	544
Glasgow City	2,358	2,345	2,315	2,189	2,043	2,122	2,057	2,075	2,017	1,931	1,891	1,661	1,662	1,717	1,590	1,460	1,360	1,162	1,062	1,076	910	832	681	632	571	493	278	200	179	696
Highland	1,385	1,430	1,349	1,292	1,056	1,158	1,078	1,075	980	944	894	907	818	788	782	730	672	560	551	526	468	425	324	315	277	236	142	113	104	334
Inverclyde	430	482	436	391	388	353	378	393	318	342	336	302	274	301	256	239	230	206	165	180	162	148	111	77	101	76	46	37	34	117
Midlothian	503	455	413	372	375	355	377	366	347	335	308	278	255	272	267	236	230	178	216	155	121	135	100	89	100	120	30	20	15	115
Moray	491	525	484	480	432	458	434	433	408	405	396	386	351	291	296	281	294	249	208	206	187	161	133	122	119	113	63	38	55	132
North Ayrshire	774	848	767	695	669	746	718	683	608	618	576	535	511	494	447	421	358	314	296	309	262	214	219	178	161	134	81	65	66	204
North Lanarkshire	1,569	1,683	1,612	1,468	1,412	1,456	1,414	1,332	1,209	1,205	1,171	1,072	1,042	1,012	865	883	773	666	624	588	468	428	353	350	273	248	185	120	78	313
Orkney Islands	115	153	132	133	102	142	122	108	86	89	102	80	70	58	64	70	77	58	38	46	45	48	31	31	28	17	12	11	5	36
Perth & Kinross	842	890	833	801	685	750	771	675	691	655	684	602	594	584	555	494	462	440	409	390	300	316	267	260	226	181	123	88	86	330
Renfrewshire	889	975	882	815	801	751	754	735	683	698	672	598	520	583	554	508	477	408	370	355	325	245	225	228	153	200	94	81	69	229
Scottish Borders	688	731	747	598	552	605	643	583	549	587	503	470	432	456	444	415	382	377	323	292	275	221	213	185	185	151	106	71	58	187
Shetland Islands	130	143	143	126	103	120	101	91	95	97	68	91	57	66	71	66	64	39	41	38	51	39	28	21	30	35	14	11	1	36
South Ayrshire	732	685	692	630	586	635	586	571	602	568	550	488	508	479	421	383	363	312	300	351	253	264	226	224	169	152	86	70	77	221
South Lanarkshire	1,593	1,619	1,622	1,428	1,376	1,379	1,363	1,361	1,297	1,283	1,141	1,068	1,053	1,030	944	865	793	700	685	634	515	514	373	336	355	321	183	133	108	403
Stirling	427	500	483	423	409	411	434	374	399	362	359	314	321	291	273	253	202	204	192	153	170	164	108	106	110	105	58	34	41	140
West Dunbartonshire	484	515	417	419	368	361	391	375	343	347	361	312	305	293	257	247	251	213	161	170	165	139	90	104	107	74	52	53	32	119
West Lothian	873	850	792	734	688	689	708	644	656	589	590	481	415	424	379	365	328	300	297	245	236	166	151	116	138	116	72	41	34	135
NHS Board areas																														
Ayrshire & Arran	2,210	2,238	2,125	1,913	1,844	1,941	1,931	1,830	1,733	1,688	1,626	1,485	1,470	1,381	1,273	1,133	1,044	941	869	917	750	677	620	551	471	421	253	188	191	586
Borders	689	731	747	598	552	605	643	583	549	587	503	470	432	456	444	415	382	377	323	292	275	221	213	185	186	151	106	71	58	187
Dumfries & Galloway	994	1,045	978	944	893	913	846	857	861	799	710	702	740	661	644	591	532	462	479	452	400	306	301	249	233	215	123	94	80	288
Fife	2,114	2,061	1,949	1,879	1,664	1,664	1,675	1,577	1,575	1,477	1,438	1,352	1,287	1,211	1,099	1,065	966	896	947	798	666	670	479	502	473	419	240	199	152	543
Forth Valley	1,537	1,587	1,578	1,341	1,324	1,305	1,351	1,288	1,235	1,152	1,138	1,039	987	949	863	800	717	660	631	546	484	504	378	381	310	307	158	96	123	398
Grampian	2,734	2,884	2,771	2,591	2,296	2,488	2,342	2,358	2,171	2,138	2,067	1,996	1,851	1,738	1,642	1,570	1,498	1,249	1,268	1,100	1,071	905	712	713	657	657	337	240	244	843
Greater Glasgow & Clyde ¹	5,599	5,738	5,439	5,034	4,792	4,810	4,763	4,778	4,541	4,464	4,347	3,883	3,704	3,847	3,527	3,290	3,077	2,653	2,346	2,380	2,035	1,813	1,520	1,401	1,252	1,136	641	511	431	1,504
Highland ¹	2,045	2,094	1,946	1,883	1,611	1,722	1,614	1,570	1,477	1,407	1,336	1,314	1,215	1,178	1,154	1,035	1,004	854	791	755	699	612	496	444	408	370	214	146	155	530
Lanarkshire	2,808	2,920	2,833	2,594	2,488	2,525	2,502	2,419	2,211	2,183	2,028	1,914	1,874	1,824	1,607	1,552	1,379	1,202	1,167	1,097	881	847	623	607	548	499	319	224	154	662
Lothian	3,869	3,800	3,564	3,254	3,151	3,133	3,118	3,099	2,989	2,911	2,742	2,592	2,409	2,377	2,323	2,103	1,986	1,805	1,734	1,547	1,402	1,255	1,081	1,011	947	888	520	331	284	1,175
Orkney	115	153	132	133	102	142	122	108	86	89	102	80	70	58	64	70	77	58	38	46	45	48	31	31	28	17				

Table 2 (continued)

FEMALES (continued)

Area	Age																														
	61	62	63	64	65	66	67	68	69	70	71	72	73	74	75	76	77	78	79	80	81	82	83	84	85	86	87	88	89	90+	
SCOTLAND	28,839	29,519	29,196	27,200	25,834	26,613	26,242	25,813	25,217	24,878	24,285	23,246	22,532	22,732	21,875	21,134	19,955	18,195	17,573	17,394	15,822	15,085	13,552	13,054	12,379	11,833	7,547	6,035	5,434	24,784	
Council areas																															
Aberdeen City	951	984	994	970	903	986	938	902	915	943	893	898	903	936	874	854	817	767	712	689	647	634	570	536	543	473	258	230	184	974	
Aberdeenshire	1,358	1,345	1,331	1,264	1,095	1,179	1,125	1,073	1,029	1,019	956	963	900	889	854	846	799	759	677	688	651	666	561	549	483	549	304	274	243	1,146	
Angus	738	727	712	666	604	674	598	625	612	580	602	562	496	559	541	476	499	450	429	441	381	387	346	315	287	264	170	136	144	682	
Argyll & Bute	601	621	602	604	553	638	577	524	545	522	504	482	477	479	419	437	397	370	349	356	325	317	269	274	275	239	184	102	112	617	
Clackmannanshire	311	304	299	272	253	239	255	224	271	233	213	174	176	182	173	202	167	142	136	139	124	140	118	123	121	95	68	51	31	165	
Dumfries & Galloway	1,060	1,077	1,118	1,006	976	949	961	867	911	880	833	824	792	770	728	747	733	645	675	558	554	523	480	453	400	356	240	220	201	837	
Dundee City	768	688	717	707	744	731	751	790	720	749	705	723	700	750	694	668	613	570	537	579	561	506	459	434	391	404	233	164	158	777	
East Ayrshire	760	728	715	717	656	691	600	623	652	591	597	571	585	555	526	486	437	407	373	426	348	303	302	305	290	255	174	146	104	527	
East Dunbartonshire	691	679	648	590	602	584	623	592	594	525	554	533	501	478	471	443	426	419	402	372	349	316	282	287	248	226	147	133	89	451	
East Lothian	535	600	533	521	500	512	491	509	446	479	480	446	428	415	399	407	403	340	356	359	295	290	284	266	269	256	124	123	114	522	
East Renfrewshire	515	545	532	462	466	460	447	488	442	473	451	443	407	446	400	387	384	348	363	322	267	289	241	260	224	223	149	140	90	448	
Edinburgh, City of	2,054	2,091	2,086	1,916	1,821	1,931	1,931	2,018	1,892	1,915	1,871	1,810	1,858	1,876	1,839	1,772	1,684	1,603	1,634	1,547	1,390	1,368	1,273	1,256	1,193	1,155	707	537	519	2,436	
Eilean Siar	163	158	180	146	183	177	148	156	151	145	132	144	161	127	117	126	128	116	105	111	105	111	94	116	90	89	59	43	40	188	
Falkirk	843	886	839	821	786	765	850	768	728	686	687	635	631	609	612	599	541	486	485	453	470	408	368	321	353	327	195	160	149	570	
Fife	2,178	2,298	2,142	1,971	1,789	1,897	1,844	1,739	1,816	1,809	1,685	1,604	1,523	1,477	1,502	1,539	1,336	1,266	1,231	1,296	1,175	1,115	1,024	946	886	860	619	435	405	1,982	
Glasgow City	2,503	2,542	2,641	2,392	2,488	2,538	2,615	2,604	2,563	2,585	2,807	2,563	2,461	2,668	2,441	2,296	2,220	2,019	1,904	1,881	1,667	1,554	1,434	1,400	1,355	1,322	836	652	609	2,629	
Highland	1,347	1,405	1,434	1,296	1,251	1,249	1,163	1,203	1,108	1,100	1,042	984	985	1,003	932	876	909	825	795	762	687	693	598	567	566	474	341	277	212	1,178	
Inverclyde	463	501	510	425	441	456	448	440	439	441	386	378	402	413	437	383	373	288	300	311	253	235	238	234	221	213	142	117	118	420	
Midlothian	483	501	457	417	402	428	409	413	365	403	384	373	314	354	322	308	306	254	216	226	237	214	190	166	181	166	92	94	75	353	
Moray	549	532	544	516	476	479	439	473	442	422	485	448	414	404	402	353	323	330	309	300	295	251	236	228	178	201	142	114	91	378	
North Ayrshire	842	891	870	859	783	829	713	784	706	684	684	688	666	630	630	571	583	523	434	474	398	374	341	357	365	347	204	166	138	663	
North Lanarkshire	1,758	1,874	1,875	1,614	1,563	1,660	1,665	1,660	1,573	1,564	1,444	1,391	1,343	1,222	1,242	1,225	1,116	968	930	929	811	818	667	631	633	527	385	298	274	1,102	
Orkney Islands	131	142	146	150	108	141	104	114	110	93	92	90	78	86	88	89	71	70	61	65	65	52	43	59	55	48	44	29	24	127	
Perth & Kinross	953	888	922	908	785	801	861	747	782	762	757	680	633	675	681	645	636	549	618	538	527	527	455	433	385	401	232	226	160	890	
Renfrewshire	1,005	1,059	949	922	893	856	947	898	927	858	832	791	719	745	753	724	630	564	550	555	504	440	428	378	332	366	215	160	159	734	
Scottish Borders	703	762	771	657	659	647	701	636	632	561	599	584	556	541	525	498	454	436	428	439	393	368	330	328	324	302	185	149	138	584	
Shetland Islands	148	119	139	134	106	108	88	101	100	79	99	81	86	79	61	72	78	85	70	58	70	59	60	70	56	51	20	32	34	124	
South Ayrshire	785	766	763	755	644	689	632	676	665	673	625	607	601	586	595	564	504	463	467	508	456	401	349	353	332	347	187	165	219	738	
South Lanarkshire	1,712	1,829	1,791	1,694	1,604	1,649	1,604	1,580	1,548	1,555	1,433	1,419	1,393	1,347	1,331	1,277	1,266	1,091	1,026	1,023	896	881	768	706	644	675	429	333	285	1,222	
Stirling	507	541	487	511	453	453	467	430	447	438	391	379	362	398	347	354	322	319	272	292	308	236	222	232	224	196	133	93	103	422	
West Dunbartonshire	496	533	538	490	452	455	478	438	454	440	432	408	455	446	415	419	361	310	359	330	281	263	244	219	225	214	170	111	106	429	
West Lothian	928	903	911	827	795	762	769	718	632	671	630	570	526	587	524	491	439	413	370	367	332	347	278	252	250	212	159	125	106	469	
NHS Board areas																															
Ayrshire & Arran	2,387	2,385	2,348	2,331	2,083	2,209	1,945	2,083	2,023	1,948	1,906	1,866	1,852	1,771	1,751	1,621	1,524	1,393	1,274	1,408	1,202	1,078	992	1,015	987	949	565	477	461	1,928	
Borders	703	762	771	657	659	647	701	636	632	561	599	584	556	541	525	498	454	436	428	439	393	368	330	328	324	302	185	149	138	584	
Dumfries & Galloway	1,060	1,077	1,118	1,006	976	949	961	867	911	880	833	824	792	770	728	747	733	645	675	558	554	523	480	453	400	356	240	220	201	837	
Fife	2,178	2,297	2,141	1,971	1,789	1,896	1,844	1,739	1,816	1,809	1,685	1,603	1,522	1,477	1,502	1,539	1,336	1,266	1,231	1,296	1,175	1,114	1,024	946	886	860	619	435	405	1,982	
Forth Valley	1,655	1,728	1,626	1,606	1,492	1,456	1,564	1,419	1,447	1,354	1,289	1,186	1,170	1,188	1,128	1,151	1,026	945	894	883	900	784	709	675	696	615	391	302	282	1,153	
Grampian	2,858	2,861	2,869	2,750	2,474	2,644	2,502	2,448	2,386	2,384	2,334	2,309	2,217	2,229	2,130	2,053	1,939	1,856	1,698	1,677	1,593	1,551	1,367	1,313	1,204	1,223	704	618	518	2,498	
Greater Glasgow & Clyde ¹	6,059	6,292	6,199	5,630	5,700	5,737	5,963	5,831	5,774	5,664	5,785	5,468	5,289	5,505	5,219	4,941	4,704	4,201	4,143	4,019	3,549	3,313	3,068	2,965	2,796	2,728	1,753	1,389	1,244	5,384	
Highland ¹	1,948	2,026	2,036	1,900	1,804	1,887	1,740	1,727	1,653	1,622	1,546	1,466	1,462	1,482	1,351	1,313	1,306	1,195	1,144	1,118	1,012	1,010	867	841	841	713	525	379	324	1,795	
Lanarkshire	3,091	3,275	3,285	2,961	2,811	2,925	2,872	2,873	2,765	2,782	2,557	2,459	2,392	2,261	2,275	2,215	2,074	1,808	1,690	1,706	1,483	1,483	1,234	1,152	1,089	1,039	724	559	489	2,083	
Lothian	3,999	4,094	3,986	3,679	3,517	3,631	3,599	3,658	3,336	3,467	3,363	3,200	3,126	3,232	3,085	2,980	2,833	2,610	2,577	2,498	2,2										

Table 3 Estimated population by sex, five year age group and administrative area: 30 June 2006

Area	Age group																			Area	
	All Ages	0 - 4	5 - 9	10 - 14	15 - 19	20 - 24	25 - 29	30 - 34	35 - 39	40 - 44	45 - 49	50 - 54	55 - 59	60 - 64	65 - 69	70 - 74	75 - 79	80 - 84	85 - 89		90+
SCOTLAND	5,116,900	268,457	279,430	308,196	328,706	339,065	310,313	317,183	384,775	405,128	377,925	335,385	344,799	279,570	243,369	212,375	168,471	118,550	62,790	32,413	SCOTLAND
Council areas																					Council areas
Aberdeen City	206,880	9,956	9,770	10,605	13,108	17,697	16,916	14,630	15,185	15,386	15,000	13,426	13,286	9,631	8,718	8,218	6,787	4,740	2,547	1,274	Aberdeen City
Aberdeenshire	236,260	12,954	14,247	15,796	15,134	11,167	10,274	13,359	18,738	19,968	18,836	17,601	17,957	13,757	10,917	9,043	7,071	5,143	2,741	1,557	Aberdeenshire
Angus	109,320	5,735	6,171	6,754	6,487	5,293	4,764	6,002	7,583	8,618	8,125	7,580	8,561	6,900	5,932	5,168	4,226	3,003	1,523	895	Angus
Argyll & Bute	91,390	4,021	4,814	5,696	5,505	4,539	3,798	4,792	6,386	7,027	6,819	6,296	7,285	6,215	5,484	4,563	3,515	2,489	1,333	813	Argyll & Bute
Clackmannanshire	48,900	2,675	2,825	3,270	3,255	2,678	2,627	2,938	3,814	3,994	3,620	3,277	3,608	2,896	2,345	1,887	1,439	1,009	529	214	Clackmannanshire
Dumfries & Galloway	148,030	7,010	7,643	9,137	8,772	6,519	6,115	7,227	9,961	11,722	10,949	10,352	11,797	10,282	9,034	7,711	6,236	4,276	2,162	1,125	Dumfries & Galloway
Dundee City	142,170	7,325	7,038	7,683	10,096	12,694	10,257	7,798	9,132	10,139	9,810	8,410	8,899	7,277	6,973	6,357	5,249	4,016	1,983	1,034	Dundee City
East Ayrshire	119,290	6,262	6,478	7,586	6,801	6,801	5,991	7,138	9,237	9,546	8,773	7,774	8,650	7,018	6,097	5,222	3,874	2,699	1,432	688	East Ayrshire
East Dunbartonshire	105,460	5,099	6,175	7,167	7,106	6,236	4,768	4,598	7,023	8,643	8,808	7,522	7,592	6,221	5,515	4,799	3,761	2,537	1,274	616	East Dunbartonshire
East Lothian	92,830	5,244	5,765	6,247	5,705	4,209	3,575	5,109	7,486	7,750	7,264	6,235	6,416	5,365	4,646	4,083	3,328	2,435	1,283	685	East Lothian
East Renfrewshire	89,290	4,880	5,780	6,344	6,069	4,960	3,663	3,966	6,212	7,584	7,456	6,295	6,059	4,775	4,291	3,887	3,101	2,232	1,172	564	East Renfrewshire
Edinburgh, City of	463,510	21,837	20,998	22,721	27,644	46,021	44,310	36,939	35,850	34,139	31,275	26,513	27,007	19,857	17,689	16,576	14,263	10,672	6,000	3,199	Edinburgh, City of
Eilean Siar	26,350	1,277	1,399	1,651	1,557	1,018	1,204	1,469	1,852	1,962	1,876	2,063	2,063	1,561	1,338	1,015	837	429	230	300	Eilean Siar
Falkirk	149,680	8,467	8,653	9,130	9,411	8,262	8,813	10,067	12,135	12,222	10,899	9,459	10,379	8,166	7,284	5,967	4,658	3,254	1,670	784	Falkirk
Fife	358,930	19,082	19,793	21,959	24,195	23,511	19,271	20,966	26,934	27,814	25,977	23,337	25,214	21,037	17,242	14,864	11,849	8,671	4,688	2,526	Fife
Glasgow City	580,690	30,865	28,747	31,043	38,518	53,485	51,393	44,802	44,668	44,649	40,144	33,642	29,899	24,366	23,122	21,946	17,514	12,067	6,495	3,325	Glasgow City
Highland	215,310	11,054	12,032	13,461	12,735	9,788	10,680	12,012	15,180	17,245	16,690	15,952	16,698	13,746	11,321	9,465	7,632	5,365	2,742	1,512	Highland
Inverclyde	81,540	4,175	4,448	4,999	5,433	5,204	4,406	4,471	5,708	6,710	6,255	5,390	5,599	4,645	4,054	3,575	2,877	1,949	1,105	537	Inverclyde
Midlothian	79,290	4,382	4,905	5,190	5,309	4,423	3,579	4,352	6,108	6,436	6,109	5,408	5,818	4,631	3,837	3,276	2,533	1,633	893	468	Midlothian
Moray	86,750	4,216	4,906	5,661	5,637	4,398	4,048	5,112	6,899	7,041	6,325	5,824	6,252	5,167	4,474	4,002	3,045	2,119	1,114	510	Moray
North Ayrshire	135,490	7,199	7,428	8,758	9,078	7,703	6,690	7,479	9,816	10,572	9,875	9,145	9,901	8,224	7,239	6,086	4,577	3,126	1,727	867	North Ayrshire
North Lanarkshire	323,780	19,201	19,478	20,483	21,247	21,125	19,417	21,369	25,893	26,267	23,732	21,015	20,449	16,923	14,944	12,466	9,292	6,043	3,021	1,415	North Lanarkshire
Orkney Islands	19,770	928	1,029	1,333	1,264	840	881	1,019	1,471	1,609	1,498	1,449	1,511	1,356	1,137	838	686	485	273	163	Orkney Islands
Perth & Kinross	140,190	6,838	7,808	8,569	8,425	7,602	6,413	7,267	9,660	11,130	10,267	9,702	10,586	8,919	7,548	6,626	5,489	4,013	2,108	1,220	Perth & Kinross
Renfrewshire	169,590	9,176	9,447	10,266	10,936	10,499	9,722	9,652	13,108	14,331	13,125	11,096	11,569	9,389	8,245	7,016	5,538	3,683	1,829	963	Renfrewshire
Scottish Borders	110,240	5,685	6,096	6,896	6,383	4,698	4,456	5,733	8,167	8,956	8,567	7,666	8,514	7,162	6,207	5,289	4,282	3,043	1,669	771	Scottish Borders
Shetland Islands	21,880	1,213	1,347	1,520	1,412	992	1,233	1,383	1,561	1,788	1,544	1,559	1,594	1,333	1,013	803	647	494	284	160	Shetland Islands
South Ayrshire	111,670	5,146	5,761	6,567	6,822	5,989	5,057	5,727	7,480	8,574	8,492	7,875	8,378	7,311	6,286	5,685	4,372	3,385	1,804	959	South Ayrshire
South Lanarkshire	307,670	16,673	17,580	19,309	19,537	18,864	17,210	18,673	23,551	24,862	23,864	21,213	20,405	16,731	14,761	12,722	9,978	6,646	3,466	1,625	South Lanarkshire
Stirling	87,810	4,644	5,261	5,615	6,882	6,025	4,162	4,491	6,483	6,976	6,338	5,614	6,105	4,934	4,277	3,615	2,738	1,991	1,097	562	Stirling
West Dunbartonshire	91,240	4,797	4,969	5,643	6,145	6,359	5,230	5,284	6,816	7,257	6,951	6,239	5,976	4,970	4,115	3,799	2,993	2,005	1,144	548	West Dunbartonshire
West Lothian	165,700	10,441	10,639	11,137	10,875	9,466	9,390	11,359	14,678	14,211	12,608	10,643	10,772	8,684	7,061	5,483	3,906	2,490	1,253	604	West Lothian
NHS Board areas																					NHS Board areas
Ayrshire & Arran	366,450	18,607	19,667	22,911	23,924	20,493	17,738	20,344	26,533	28,692	27,140	24,794	26,929	22,553	19,622	16,993	12,823	9,210	4,963	2,514	Ayrshire & Arran
Borders	110,247	5,684	6,099	6,896	6,383	4,695	4,456	5,733	8,167	8,959	8,568	7,666	8,515	7,163	6,207	5,289	4,282	3,044	1,670	771	Borders
Dumfries & Galloway	148,030	7,010	7,643	9,137	8,772	6,519	6,115	7,227	9,961	11,722	10,949	10,352	11,797	10,282	9,034	7,711	6,236	4,276	2,162	1,125	Dumfries & Galloway
Fife	358,930	19,082	19,787	21,951	24,192	23,507	19,270	20,968	26,924	27,805	25,973	23,332	25,206	21,030	17,239	14,861	11,847	8,670	4,688	2,525	Fife
Forth Valley	286,053	15,774	16,729	18,001	19,533	16,967	15,577	17,477	22,406	23,168	20,835	18,320	20,065	15,978	13,881	11,452	8,815	6,244	3,280	1,551	Forth Valley
Grampian	529,889	27,126	28,923	32,062	33,879	33,262	31,238	33,101	40,821	42,395	40,161	36,851	37,495	28,555	24,109	21,263	16,903	12,002	6,402	3,341	Grampian
Greater Glasgow & Clyde ¹	1,191,584	63,326	63,751	69,885	78,736	91,207	83,800	77,581	89,283	94,980	88,387	75,357	71,509	58,204	52,689	47,956	38,101	26,063	13,881	6,888	Greater Glasgow & Clyde 1
Highland ¹	306,701	15,075	16,846	19,157	18,240	14,327	14,478	16,804	21,567	24,272	23,509	22,248	23,983	19,961	16,805	14,028	11,147	7,854	4,075	2,325	Highland 1
Lanarkshire	558,139	31,562	32,903	35,396	36,281	35,479	31,993	35,250	43,748	45,382	41,990	37,095	36,076	29,848	26,391	22,274	16,969	11,113	5,644	2,745	Lanarkshire
Lothian	801,310	41,901	42,288	45,290	49,530	64,182	60,892	57,759	64,102	62,502	57,236	48,791	50,006	38,530	33,231	29,419	24,036	17,232	9,428	4,955	Lothian
Orkney	19,770	928	1,029	1,333	1,264	840	881	1,019	1,471	1,609	1,498	1,449	1,511	1,356	1,137	838	686	485	273	163	Orkney
Shetland	21,880	1,213	1,347	1,520	1,412	992	1,233	1,383	1,561	1,788	1,544	1,559	1,594	1,333	1,013	803	647	494	284	160	Shetland
Tayside	391,639	19,891	21,019	23,006	25,003	25,577	21,438	21,068	26,379	29,892	28,205	25,695	28,050	23,095	20,450	18,150	14,964	11,026	5,611		

Table 3 (continued)

MALES

Area	Age group																			Area	
	All Ages	0 - 4	5 - 9	10 - 14	15 - 19	20 - 24	25 - 29	30 - 34	35 - 39	40 - 44	45 - 49	50 - 54	55 - 59	60 - 64	65 - 69	70 - 74	75 - 79	80 - 84	85 - 89		90+
SCOTLAND	2,469,407	137,389	143,221	157,404	168,880	171,019	156,422	153,686	185,147	194,867	183,306	164,736	169,377	135,028	113,650	94,702	69,739	43,643	19,562	7,629	SCOTLAND
Council areas																					Council areas
Aberdeen City	101,841	5,045	5,137	5,538	6,201	8,495	9,376	7,697	7,724	7,594	7,434	6,902	6,718	4,675	4,074	3,645	2,763	1,664	859	300	Aberdeen City
Aberdeenshire	116,988	6,671	7,445	8,016	7,874	6,084	5,208	6,186	9,095	9,859	9,456	8,782	9,174	6,943	5,416	4,316	3,136	2,028	888	411	Aberdeenshire
Angus	52,792	2,912	3,158	3,400	3,421	2,842	2,380	2,889	3,569	4,189	3,888	3,717	4,189	3,351	2,819	2,369	1,831	1,133	522	213	Angus
Argyll & Bute	45,540	2,063	2,438	2,867	2,939	2,802	2,230	2,481	3,205	3,490	3,424	3,161	3,476	3,110	2,647	2,099	1,543	948	421	196	Argyll & Bute
Clackmannanshire	23,715	1,402	1,426	1,633	1,633	1,428	1,260	1,391	1,877	1,939	1,780	1,584	1,745	1,409	1,103	909	619	365	163	49	Clackmannanshire
Dumfries & Galloway	71,573	3,581	3,894	4,654	4,621	3,356	2,985	3,417	4,750	5,677	5,249	5,054	5,917	4,987	4,370	3,612	2,708	1,708	745	288	Dumfries & Galloway
Dundee City	67,504	3,800	3,596	3,961	4,910	6,219	5,333	3,684	4,215	4,662	4,597	4,110	4,302	3,614	3,237	2,730	2,167	1,477	633	257	Dundee City
East Ayrshire	57,516	3,167	3,348	3,898	4,125	3,437	2,930	3,488	4,396	4,614	4,185	3,807	4,270	3,369	2,875	2,323	1,645	1,015	463	161	East Ayrshire
East Dunbartonshire	50,859	2,665	3,177	3,704	3,808	3,286	2,618	2,064	3,256	4,008	4,176	3,625	3,676	2,941	2,520	2,208	1,600	931	431	165	East Dunbartonshire
East Lothian	44,555	2,708	2,858	3,200	3,025	2,148	1,747	2,356	3,512	3,734	3,547	3,072	3,072	2,629	2,188	1,835	1,423	941	397	163	East Lothian
East Renfrewshire	42,540	2,481	3,020	3,244	3,198	2,586	1,886	1,767	2,779	3,537	3,632	3,063	2,913	2,245	1,988	1,667	1,219	853	346	116	East Renfrewshire
Edinburgh, City of	223,028	11,367	10,838	11,748	13,769	21,685	22,139	18,413	17,902	16,550	15,215	13,285	13,122	9,432	8,096	7,246	5,731	3,838	1,889	763	Edinburgh, City of
Eilean Siar	12,969	622	704	835	849	574	584	743	919	980	1,004	960	1,081	866	746	629	423	300	108	42	Eilean Siar
Falkirk	72,330	4,347	4,465	4,644	4,932	4,082	4,328	4,840	5,810	5,956	5,391	4,556	5,074	3,930	3,387	2,719	1,935	1,234	486	214	Falkirk
Fife	173,054	9,703	10,137	11,169	12,222	12,046	9,493	10,192	13,053	13,382	12,780	11,436	12,229	10,172	8,157	6,766	4,975	3,115	1,483	544	Fife
Glasgow City	278,635	15,818	14,663	15,824	19,691	26,172	26,065	22,575	21,804	21,275	19,231	16,607	14,876	11,676	10,314	8,862	6,634	4,131	1,721	696	Glasgow City
Highland	105,285	5,643	6,319	6,797	6,825	5,344	5,430	5,835	7,166	8,385	8,145	7,897	8,379	6,863	5,347	4,351	3,295	2,058	872	334	Highland
Inverclyde	38,901	2,147	2,327	2,528	2,814	2,666	2,270	2,138	2,633	3,201	2,989	2,638	2,745	2,235	1,830	1,555	1,096	678	294	117	Inverclyde
Midlothian	37,568	2,278	2,390	2,648	2,756	2,234	1,638	1,972	2,848	2,926	2,838	2,633	2,780	2,232	1,820	1,448	1,127	600	285	115	Midlothian
Moray	43,718	2,187	2,546	2,893	3,044	2,541	2,276	2,687	3,582	3,612	3,224	2,902	3,059	2,514	2,165	1,829	1,328	809	388	132	Moray
North Ayrshire	64,125	3,667	3,737	4,480	4,750	3,812	3,170	3,438	4,523	4,907	4,654	4,387	4,796	3,917	3,424	2,734	1,836	1,182	507	204	North Ayrshire
North Lanarkshire	155,520	9,827	9,937	10,552	10,858	10,698	9,547	10,185	12,401	12,610	11,317	10,120	9,908	8,020	6,823	5,502	3,811	2,187	904	313	North Lanarkshire
Orkney Islands	9,717	449	556	652	667	452	425	477	736	831	742	722	777	655	560	399	307	201	73	36	Orkney Islands
Perth & Kinross	67,964	3,503	3,985	4,372	4,490	3,998	3,342	3,478	4,486	5,452	5,018	4,683	5,214	4,325	3,572	3,119	2,360	1,533	704	330	Perth & Kinross
Renfrewshire	80,948	4,642	4,842	5,199	5,609	5,341	4,815	4,524	6,136	6,856	6,277	5,353	5,599	4,439	3,724	3,071	2,317	1,378	597	229	Renfrewshire
Scottish Borders	53,385	2,916	3,108	3,483	3,296	2,348	2,179	2,671	3,988	4,392	4,137	3,820	4,172	3,430	2,932	2,448	1,941	1,186	571	187	Scottish Borders
Shetland Islands	10,976	640	663	782	730	555	624	692	775	915	767	806	879	674	510	379	281	177	91	36	Shetland Islands
South Ayrshire	53,317	2,625	2,978	3,298	3,478	3,106	2,469	2,817	3,579	4,053	4,064	3,841	4,109	3,455	2,980	2,593	1,779	1,318	554	221	South Ayrshire
South Lanarkshire	147,072	8,388	8,917	9,847	10,206	9,716	8,487	8,785	11,213	11,703	11,511	10,240	9,929	7,917	6,776	5,575	3,987	2,372	1,100	403	South Lanarkshire
Stirling	41,893	2,418	2,691	2,840	3,421	3,043	1,928	2,017	2,947	3,305	3,166	2,729	3,023	2,378	2,027	1,647	1,124	701	348	140	Stirling
West Dunbartonshire	43,223	2,443	2,543	2,957	3,161	3,178	2,512	2,488	3,214	3,399	3,340	3,022	2,883	2,393	1,838	1,618	1,129	668	318	119	West Dunbartonshire
West Lothian	80,356	5,264	5,378	5,741	5,557	4,745	4,648	5,299	7,054	6,874	6,128	5,222	5,291	4,152	3,385	2,499	1,669	914	401	135	West Lothian
NHS Board areas																					NHS Board areas
Ayrshire & Arran	174,958	9,459	10,063	11,676	12,353	10,355	8,569	9,743	12,498	13,574	12,903	12,035	13,175	10,741	9,279	7,650	5,260	3,515	1,524	586	Ayrshire & Arran
Borders	53,389	2,915	3,111	3,483	3,296	2,346	2,279	2,671	3,988	4,394	4,137	3,820	4,172	3,511	2,932	2,448	1,941	1,186	572	187	Borders
Dumfries & Galloway	71,573	3,581	3,894	4,654	4,621	3,356	2,985	3,417	4,750	5,677	5,249	5,054	5,917	4,987	4,370	3,612	2,708	1,708	745	288	Dumfries & Galloway
Fife	173,020	9,703	10,134	11,163	12,221	12,044	9,493	10,194	13,050	13,378	12,778	11,433	12,226	10,169	8,155	6,765	4,973	3,115	1,483	543	Fife
Forth Valley	137,762	8,159	8,580	9,111	9,978	8,550	7,499	8,233	10,623	11,182	10,332	8,855	9,829	7,707	6,503	5,265	3,671	2,293	994	398	Forth Valley
Grampian	262,546	13,903	15,128	16,447	17,119	17,120	16,860	16,570	20,400	21,065	20,114	18,586	18,951	14,132	11,655	9,790	7,227	4,501	2,135	843	Grampian
Greater Glasgow & Clyde ¹	569,742	32,413	32,661	35,675	40,568	45,432	42,415	37,734	42,543	44,932	42,309	36,800	35,044	27,770	23,684	20,245	14,893	9,149	3,971	1,504	Greater Glasgow & Clyde 1
Highland ¹	150,826	7,706	8,757	9,664	9,764	8,146	7,660	8,316	10,372	11,875	11,569	11,058	11,855	9,973	7,994	6,450	4,838	3,006	1,293	530	Highland 1
Lanarkshire	268,154	16,011	16,775	18,189	18,796	18,178	15,776	16,797	20,925	21,686	20,178	17,893	17,500	14,114	12,145	9,823	6,907	4,055	1,744	662	Lanarkshire
Lothian	385,511	21,615	21,452	23,338	25,098	30,855	30,195	28,048	31,300	30,072	27,718	24,201	24,266	18,440	15,490	13,031	9,951	6,296	2,970	1,175	Lothian
Orkney	9,717	449	556	652	667	452	425	477	736	831	742	722	777	655	560	399	307	201	73	36	Orkney
Shetland	10,976	640	663	782	730	555	624	692	775	915	767	806	879	674	510	379	281	177	91	36	Shetland
Tayside	188,264	10,213	10,743	11,735	12,820	13,056	11,058	10,051	12,268	14,306	13,506	12,513	13,705	11,289	9,627	8,216	6,359	4,141	1,859	799	Tayside
Western Isles	12,969	622	704	835	849	574	584	743	919	980	1,004	960	1,081	866	746	629	423	300	108	42	Western Isles
Argyll & Clyde ²	199,277	10,739	11,574	12,896	13,910	13,175	11,149	10,997	14,478	16,365	15,434	13,584	14,245								

Table 3 (continued)

FEMALES

Area	Age group																			Area	
	All Ages	0 - 4	5 - 9	10 - 14	15 - 19	20 - 24	25 - 29	30 - 34	35 - 39	40 - 44	45 - 49	50 - 54	55 - 59	60 - 64	65 - 69	70 - 74	75 - 79	80 - 84	85 - 89		90+
SCOTLAND	2,647,493	131,068	136,209	150,792	159,826	168,046	153,891	163,497	199,628	210,261	194,619	170,649	175,422	144,542	129,719	117,673	98,732	74,907	43,228	24,784	SCOTLAND
Council areas																					Council areas
Aberdeen City	105,039	4,911	4,633	5,067	6,907	9,202	7,540	6,933	7,461	7,792	7,566	6,524	6,568	4,956	4,644	4,573	4,024	3,076	1,688	974	Aberdeen City
Aberdeenshire	119,272	6,283	6,802	7,780	7,260	5,083	5,066	7,173	9,643	10,109	9,380	8,819	8,783	6,814	5,501	4,727	3,935	3,115	1,853	1,146	Aberdeenshire
Angus	56,528	2,823	3,013	3,354	3,066	2,451	2,384	3,113	4,014	4,429	4,237	3,863	4,372	3,549	3,113	2,799	2,395	1,870	1,001	682	Angus
Argyll & Bute	45,850	1,958	2,376	2,829	2,566	1,737	1,568	2,311	3,181	3,537	3,395	3,135	3,809	3,105	2,837	2,464	1,972	1,541	912	617	Argyll & Bute
Clackmannanshire	25,185	1,273	1,399	1,637	1,622	1,250	1,367	1,547	1,937	2,055	1,840	1,693	1,863	1,487	1,242	978	820	644	366	165	Clackmannanshire
Dumfries & Galloway	76,457	3,429	3,749	4,483	4,151	3,163	3,130	3,810	5,211	6,045	5,700	5,298	5,880	5,295	4,664	4,099	3,528	2,568	1,417	837	Dumfries & Galloway
Dundee City	74,666	3,525	3,442	3,722	5,186	6,475	4,924	4,114	4,917	5,477	5,213	4,300	4,597	3,663	3,736	3,627	3,082	2,539	1,350	777	Dundee City
East Ayrshire	61,774	3,095	3,130	3,688	3,899	3,364	3,061	3,650	4,841	4,932	4,588	3,967	4,380	3,649	3,222	2,899	2,229	1,684	969	527	East Ayrshire
East Dunbartonshire	54,601	2,434	2,998	3,463	3,298	2,950	2,150	2,534	3,767	4,635	4,632	3,897	3,916	3,280	2,995	2,591	2,161	1,606	843	451	East Dunbartonshire
East Lothian	48,275	2,536	2,907	3,047	2,680	2,061	1,828	2,753	3,974	4,016	3,717	3,163	3,344	2,736	2,458	2,248	1,905	1,494	886	522	East Lothian
East Renfrewshire	46,750	2,399	2,760	3,100	2,871	2,374	1,777	2,199	3,433	4,047	3,824	3,232	3,146	2,530	2,303	2,220	1,882	1,379	826	448	East Renfrewshire
Edinburgh, City of	240,482	10,470	10,160	10,973	13,875	24,336	22,171	18,526	17,948	17,589	16,060	13,228	13,885	10,425	9,593	9,330	8,532	6,834	4,111	2,436	Edinburgh, City of
Eilean Siar	13,381	655	695	816	708	444	620	726	933	982	926	916	982	816	815	709	592	537	321	188	Eilean Siar
Falkirk	77,350	4,120	4,188	4,486	4,479	4,180	4,485	5,227	6,325	6,266	5,508	4,903	5,305	4,236	3,897	3,248	2,723	2,020	1,184	570	Falkirk
Fife	185,876	9,379	9,656	10,790	11,973	11,465	9,778	10,774	13,881	14,432	13,197	11,901	12,985	10,865	9,085	8,098	6,874	5,556	3,205	1,982	Fife
Glasgow City	302,055	15,047	14,084	15,219	18,827	27,313	25,328	22,227	22,864	23,374	20,913	17,035	15,023	12,690	12,808	13,084	10,880	7,936	4,774	2,629	Glasgow City
Highland	110,025	5,411	5,713	6,664	5,910	4,444	5,250	6,177	8,014	8,860	8,545	8,055	8,319	6,883	5,974	5,114	4,337	3,307	1,870	1,178	Highland
Inverclyde	42,639	2,028	2,121	2,471	2,619	2,538	2,136	2,333	3,075	3,509	3,266	2,752	2,854	2,410	2,224	2,020	1,781	1,271	811	420	Inverclyde
Midlothian	41,722	2,104	2,515	2,542	2,553	2,189	1,941	2,380	3,260	3,510	3,271	2,775	3,038	2,399	2,017	1,828	1,406	1,033	608	353	Midlothian
Moray	43,032	2,029	2,360	2,768	2,593	1,857	1,772	2,425	3,317	3,429	3,101	2,922	3,193	2,653	2,309	2,173	1,717	1,310	726	378	Moray
North Ayrshire	71,365	3,532	3,691	4,278	4,328	3,891	3,520	4,041	5,293	5,665	5,221	4,758	5,105	4,307	3,815	3,352	2,741	1,944	1,220	663	North Ayrshire
North Lanarkshire	168,260	9,374	9,541	9,931	10,389	10,427	9,870	11,184	13,492	13,657	12,415	10,895	10,541	8,903	8,121	6,964	5,481	3,856	2,117	1,102	North Lanarkshire
Orkney Islands	10,053	479	473	681	597	388	456	542	735	778	756	727	734	701	577	439	379	284	200	127	Orkney Islands
Perth & Kinross	72,226	3,335	3,823	4,197	3,935	3,604	3,071	3,789	5,174	5,678	5,249	5,019	5,372	4,594	3,976	3,507	3,129	2,480	1,404	890	Perth & Kinross
Renfrewshire	88,642	4,534	4,605	5,067	5,327	5,158	4,907	5,128	6,972	7,475	6,848	5,743	5,970	4,950	4,521	3,945	3,221	2,305	1,232	734	Renfrewshire
Scottish Borders	56,855	2,769	2,988	3,413	3,087	2,350	2,177	3,062	4,179	4,564	4,430	3,846	4,342	3,652	3,275	2,841	2,341	1,857	1,098	584	Scottish Borders
Shetland Islands	10,904	573	684	738	682	437	609	691	786	873	777	753	715	659	503	424	366	317	193	124	Shetland Islands
South Ayrshire	58,353	2,521	2,783	3,269	3,344	2,883	2,588	2,910	3,901	4,521	4,428	4,034	4,269	3,856	3,306	3,092	2,593	2,067	1,250	738	South Ayrshire
South Lanarkshire	160,598	8,285	8,663	9,462	9,331	9,148	8,723	9,888	12,338	13,159	12,353	10,973	10,476	8,814	7,985	7,147	5,991	4,274	2,366	1,222	South Lanarkshire
Stirling	45,917	2,226	2,570	2,775	3,461	2,982	2,234	2,474	3,536	3,671	3,172	2,885	3,082	2,556	2,250	1,968	1,614	1,290	749	422	Stirling
West Dunbartonshire	48,017	2,354	2,426	2,686	2,984	3,181	2,718	2,796	3,602	3,858	3,611	3,217	3,093	2,577	2,277	2,181	1,864	1,337	826	429	West Dunbartonshire
West Lothian	85,344	5,177	5,261	5,396	5,318	4,721	4,742	6,060	7,624	7,337	6,480	5,421	5,481	4,532	3,676	2,984	2,237	1,576	852	469	West Lothian
NHS Board areas																					NHS Board areas
Ayrshire & Arran	191,492	9,148	9,604	11,235	11,571	10,138	9,169	10,601	14,035	15,118	14,237	12,759	13,754	11,812	10,343	9,343	7,563	5,695	3,439	1,928	Ayrshire & Arran
Borders	56,858	2,769	2,988	3,413	3,087	2,349	2,177	3,062	4,179	4,565	4,431	3,846	4,343	3,652	3,275	2,841	2,341	1,858	1,098	584	Borders
Dumfries & Galloway	76,457	3,429	3,749	4,483	4,151	3,163	3,130	3,810	5,211	6,045	5,700	5,298	5,880	5,295	4,664	4,099	3,528	2,568	1,417	837	Dumfries & Galloway
Fife	185,838	9,380	9,653	10,788	11,971	11,463	9,777	10,774	13,874	14,427	13,195	11,899	12,980	10,861	9,084	8,096	6,874	5,555	3,205	1,982	Fife
Forth Valley	148,291	7,615	8,149	8,890	9,555	8,417	8,078	9,244	11,783	11,986	10,503	9,465	10,236	8,271	7,378	6,187	5,144	3,951	2,286	1,153	Forth Valley
Grampian	267,343	13,223	13,795	15,615	16,760	16,142	14,378	16,531	20,421	21,330	20,047	18,265	18,544	14,423	12,454	11,473	9,676	7,501	4,267	2,498	Grampian
Greater Glasgow & Clyde ¹	621,842	30,913	31,090	34,210	38,168	45,775	41,385	39,847	46,740	50,048	46,078	38,557	36,465	30,434	29,005	27,711	23,208	16,914	9,910	5,384	Greater Glasgow & Clyde 1
Highland ¹	155,875	7,369	8,089	9,493	8,476	6,181	6,818	8,488	11,195	12,397	11,940	11,190	12,128	9,988	8,811	7,578	6,309	4,848	2,782	1,795	Highland 1
Lanarkshire	289,985	15,551	16,128	17,207	17,485	17,301	16,217	18,453	22,823	23,696	21,812	19,202	18,576	15,734	14,246	12,451	10,062	7,058	3,900	2,083	Lanarkshire
Lothian	415,799	20,286	20,836	21,952	24,432	33,327	30,697	29,711	32,802	32,430	29,518	24,590	25,740	20,090	17,741	16,388	14,085	10,936	6,458	3,780	Lothian
Orkney	10,053	479	473	681	597	388	456	542	735	778	756	727	734	701	577	439	379	284	200	127	Orkney
Shetland	10,904	573	684	738	682	437	609	691	786	873	777	753	715	659	503	424	366	317	193	124	Shetland
Tayside	203,375	9,678	10,276	11,271	12,183	12,521	10,380	11,017	14,111	15,586	14,699	13,182	14,345	11,806	10,823	9,934	8,605	6,885	3,752	2,321	Tayside
Western Isles	13,381	655	695	816	708	444	620	726	933	982	926	916	982	816	815	709	592	537	321	188	Western Isles
Argyll & Clyde ²	214,226	10,336	11,045	12,543	12,868																

Table 4 Components of population change by administrative area: 2005-2006

	Estimated	Births	Deaths	Natural change	Estimated ¹	Other ² changes	Estimated	Population change	
	population 30 June 2005				net civilian migration		population 30 June 2006	Number	%
SCOTLAND	5,094,800	54,961	55,256	-295	21,167	1,228	5,116,900	22,100	0.4
Council areas									
Aberdeen City	205,910	2,114	2,077	37	953	-20	206,880	970	0.5
Aberdeenshire	233,430	2,571	2,101	470	2,362	-2	236,260	2,830	1.2
Angus	108,790	1,096	1,266	-170	684	16	109,320	530	0.5
Argyll & Bute	90,870	759	1,058	-299	119	700	91,390	520	0.6
Clackmannanshire	48,630	557	533	24	191	55	48,900	270	0.6
Dumfries & Galloway	148,340	1,449	1,935	-486	168	8	148,030	-310	-0.2
Dundee City	142,360	1,504	1,681	-177	-13	0	142,170	-190	-0.1
East Ayrshire	119,400	1,270	1,386	-116	12	-6	119,290	-110	-0.1
East Dunbartonshire	105,960	938	953	-15	-482	-3	105,460	-500	-0.5
East Lothian	91,800	1,075	997	78	952	0	92,830	1,030	1.1
East Renfrewshire	89,600	856	805	51	-361	0	89,290	-310	-0.3
Edinburgh, City of	457,830	4,881	4,354	527	4,775	378	463,510	5,680	1.2
Eilean Siar	26,370	245	375	-130	110	0	26,350	-20	-0.1
Falkirk	149,150	1,768	1,633	135	492	-97	149,680	530	0.4
Fife	356,740	3,907	3,576	331	1,659	200	358,930	2,190	0.6
Glasgow City	578,790	6,694	6,963	-269	2,100	69	580,690	1,900	0.3
Highland	213,590	2,226	2,306	-80	1,720	80	215,310	1,720	0.8
Inverclyde	82,130	837	1,024	-187	-366	-37	81,540	-590	-0.7
Midlothian	79,190	872	849	23	77	0	79,290	100	0.1
Moray	86,590	880	951	-71	431	-200	86,750	160	0.2
North Ayrshire	135,830	1,480	1,628	-148	-192	0	135,490	-340	-0.3
North Lanarkshire	323,420	3,864	3,469	395	-29	-6	323,780	360	0.1
Orkney Islands	19,590	194	208	-14	194	0	19,770	180	0.9
Perth & Kinross	138,590	1,290	1,627	-337	1,873	64	140,190	1,600	1.2
Renfrewshire	170,000	1,842	1,980	-138	-272	0	169,590	-410	-0.2
Scottish Borders	109,730	1,091	1,312	-221	731	0	110,240	510	0.5
Shetland Islands	22,000	261	183	78	-166	-32	21,880	-120	-0.5
South Ayrshire	111,780	965	1,362	-397	287	0	111,670	-110	-0.1
South Lanarkshire	306,280	3,434	3,293	141	1,249	0	307,670	1,390	0.5
Stirling	86,930	869	892	-23	842	61	87,810	880	1.0
West Dunbartonshire	91,400	1,039	1,092	-53	-107	0	91,240	-160	-0.2
West Lothian	163,780	2,133	1,387	746	1,174	0	165,700	1,920	1.2
NHS Board areas									
Ayrshire & Arran	367,010	3,715	4,376	-661	107	-6	366,450	-560	-0.2
Borders	109,730	1,089	1,312	-223	740	0	110,247	517	0.5
Dumfries & Galloway	148,340	1,449	1,935	-486	168	8	148,030	-310	-0.2
Fife	356,664	3,907	3,576	331	1,663	200	358,858	2,194	0.6
Forth Valley	284,379	3,192	3,068	124	1,531	19	286,053	1,674	0.6
Grampian	525,930	5,565	5,129	436	3,745	-222	529,889	3,959	0.8
Greater Glasgow & Clyde ³	1,190,939	13,118	13,649	-531	1,147	29	1,191,584	645	0.1
Highland ³	304,460	2,985	3,364	-379	1,840	780	306,701	2,241	0.7
Lanarkshire	557,088	6,391	5,932	459	598	-6	558,139	1,051	0.2
Lothian	792,593	8,963	7,589	1,374	6,965	378	801,310	8,717	1.1
Orkney	19,590	194	208	-14	194	0	19,770	180	0.9
Shetland	22,000	261	183	78	-166	-32	21,880	-120	-0.5
Tayside	389,707	3,887	4,560	-673	2,525	80	391,639	1,932	0.5
Western Isles	26,370	245	375	-130	110	0	26,350	-20	-0.1
Argyll & Clyde ⁴	414,022	4,199	4,801	-602	-580	663	413,503	-519	-0.1
Greater Glasgow & Clyde pt.	323,152	3,440	3,743	-303	-699	-37	322,113	-1,039	-0.3
Highland pt.	90,870	759	1,058	-299	119	700	91,390	520	0.6
Greater Glasgow ⁴	867,787	9,678	9,906	-228	1,846	66	869,471	1,684	0.2
Highland ⁴	213,590	2,226	2,306	-80	1,721	80	215,311	1,721	0.8

¹ Includes movements to/from armed forces and an adjustment for a recurring unattributable population change based on the 2001 Census, which is assumed to be unmeasured migration. See the "Notes and Definitions" section for more information on unattributable population change.

² Includes changes in the number of prisoners and armed forces stationed in Scotland.

³ New NHS Board areas including parts of former Argyll & Clyde.

⁴ Former NHS Board areas (before dissolution of Argyll & Clyde on 1 April 2006).

Table 5 Components of population change by administrative area: 2001-2006

	Estimated population 30 June 2001	Births	Deaths	Natural change	Estimated ¹ net civilian migration	Other ² changes	Estimated population 30 June 2006	Population change	
								Number	%
SCOTLAND	5,064,200	265,827	285,007	-19,180	71,601	279	5,116,900	52,700	1.0
Council areas									
Aberdeen City	211,910	10,344	10,787	-443	-4,594	7	206,880	-5,030	-2.4
Aberdeenshire	226,940	11,943	10,596	1,347	8,213	-240	236,260	9,320	4.1
Angus	108,370	5,355	6,643	-1,288	2,639	-401	109,320	950	0.9
Argyll & Bute	91,300	3,825	5,693	-1,868	2,068	-110	91,390	90	0.1
Clackmannanshire	48,070	2,539	2,578	-39	891	-22	48,900	830	1.7
Dumfries & Galloway	147,780	6,859	9,315	-2,456	2,695	11	148,030	250	0.2
Dundee City	145,460	7,604	8,970	-1,366	-1,924	0	142,170	-3,290	-2.3
East Ayrshire	120,310	6,130	7,221	-1,091	12	59	119,290	-1,020	-0.8
East Dunbartonshire	108,250	4,666	4,918	-252	-2,562	24	105,460	-2,790	-2.6
East Lothian	90,180	4,899	5,138	-239	2,889	0	92,830	2,650	2.9
East Renfrewshire	89,410	4,535	4,318	217	-337	0	89,290	-120	-0.1
Edinburgh, City of	449,020	23,030	22,505	525	13,676	289	463,510	14,490	3.2
Eilean Siar	26,450	1,185	1,927	-742	642	0	26,350	-100	-0.4
Falkirk	145,270	8,210	8,170	40	4,424	-54	149,680	4,410	3.0
Fife	349,770	18,521	19,236	-715	8,975	900	358,930	9,160	2.6
Glasgow City	578,710	33,017	36,943	-3,926	5,743	163	580,690	1,980	0.3
Highland	208,920	10,624	11,762	-1,138	7,505	23	215,310	6,390	3.1
Inverclyde	84,150	4,221	5,439	-1,218	-1,411	19	81,540	-2,610	-3.1
Midlothian	80,950	4,320	4,214	106	-1,666	-100	79,290	-1,660	-2.1
Moray	87,000	4,301	4,777	-476	576	-350	86,750	-250	-0.3
North Ayrshire	135,820	6,999	8,096	-1,097	767	0	135,490	-330	-0.2
North Lanarkshire	321,180	19,133	17,334	1,799	679	122	323,780	2,600	0.8
Orkney Islands	19,220	899	1,061	-162	712	0	19,770	550	2.9
Perth & Kinross	134,950	6,443	8,050	-1,607	6,907	-60	140,190	5,240	3.9
Renfrewshire	172,850	9,134	10,164	-1,030	-2,230	0	169,590	-3,260	-1.9
Scottish Borders	106,950	5,287	6,728	-1,441	4,731	0	110,240	3,290	3.1
Shetland Islands	21,960	1,183	1,031	152	-200	-32	21,880	-80	-0.4
South Ayrshire	112,160	4,954	7,202	-2,248	1,808	-50	111,670	-490	-0.4
South Lanarkshire	302,340	16,148	16,720	-572	5,902	0	307,670	5,330	1.8
Stirling	86,200	4,354	4,461	-107	1,636	81	87,810	1,610	1.9
West Dunbartonshire	93,320	4,919	5,720	-801	-1,279	0	91,240	-2,080	-2.2
West Lothian	159,030	10,246	7,290	2,956	3,714	0	165,700	6,670	4.2
NHS Board areas									
Ayrshire & Arran	368,290	18,083	22,519	-4,436	2,587	9	366,450	-1,840	-0.5
Borders	106,950	5,284	6,726	-1,442	4,739	0	110,247	3,297	3.1
Dumfries & Galloway	147,780	6,859	9,315	-2,456	2,695	11	148,030	250	0.2
Fife	349,690	18,521	19,236	-715	8,983	900	358,858	9,168	2.6
Forth Valley	279,240	15,099	15,246	-147	6,955	5	286,053	6,813	2.4
Grampian	525,850	26,588	26,160	428	4,194	-583	529,889	4,039	0.8
Greater Glasgow & Clyde ³	1,197,570	64,667	71,675	-7,008	816	206	1,191,584	-5,986	-0.5
Highland ³	300,220	14,449	17,455	-3,006	9,574	-87	306,701	6,481	2.2
Lanarkshire	553,230	31,124	29,890	1,234	3,553	122	558,139	4,909	0.9
Lothian	779,000	42,490	39,149	3,341	18,780	189	801,310	22,310	2.9
Orkney	19,220	899	1,061	-162	712	0	19,770	550	2.9
Shetland	21,960	1,183	1,031	152	-200	-32	21,880	-80	-0.4
Tayside	388,750	19,396	23,617	-4,221	7,571	-461	391,639	2,889	0.7
Western Isles	26,450	1,185	1,927	-742	642	0	26,350	-100	-0.4
Argyll & Clyde ⁴									
Greater Glasgow & Clyde pt.	329,400	17,095	19,650	-2,555	-4,751	19	322,113	-7,287	-2.2
Highland pt.	91,300	3,825	5,693	-1,868	2,068	-110	91,390	90	0.1
Greater Glasgow ⁴	868,170	47,572	52,025	-4,453	5,567	187	869,471	1,301	0.1
Highland ⁴	208,920	10,624	11,762	-1,138	7,506	23	215,311	6,391	3.1

¹ Includes movements to/from armed forces and an adjustment for a recurring unattributable population change based on the 2001 Census, which is assumed to be unmeasured migration. See the "Notes and Definitions" section for more information on unattributable population change.

² Includes changes in the number of prisoners and armed forces stationed in Scotland.

³ New NHS Board areas including parts of former Argyll & Clyde.

⁴ Former NHS Board areas (before dissolution of Argyll & Clyde on 1 April 2006).

Table 6 Components of population change by administrative area: 1996-2006

	Estimated population 30 June 1996	Births	Deaths	Natural change	Estimated ¹ net civilian migration and other changes	Estimated population 30 June 2006	Population change	
							Number	%
SCOTLAND	5,092,190	547,420	580,347	-32,927	57,637	5,116,900	24,710	0.5
Council areas								
Aberdeen City	218,350	21,723	22,116	-393	-11,077	206,880	-11,470	-5.3
Aberdeenshire	226,990	24,425	20,939	3,486	5,784	236,260	9,270	4.1
Angus	110,570	11,079	13,497	-2,418	1,168	109,320	-1,250	-1.1
Argyll & Bute	91,740	8,111	11,781	-3,670	3,320	91,390	-350	-0.4
Clackmannanshire	48,560	5,235	5,190	45	295	48,900	340	0.7
Dumfries & Galloway	148,520	14,128	18,377	-4,249	3,759	148,030	-490	-0.3
Dundee City	152,200	15,558	18,433	-2,875	-7,155	142,170	-10,030	-6.6
East Ayrshire	122,000	12,734	14,748	-2,014	-696	119,290	-2,710	-2.2
East Dunbartonshire	109,300	10,041	9,929	112	-3,952	105,460	-3,840	-3.5
East Lothian	86,990	9,980	10,413	-433	6,273	92,830	5,840	6.7
East Renfrewshire	87,410	9,473	8,522	951	929	89,290	1,880	2.2
Edinburgh, City of	444,910	47,132	47,177	-45	18,645	463,510	18,600	4.2
Eilean Siar	28,600	2,458	3,899	-1,441	-809	26,350	-2,250	-7.9
Falkirk	143,040	16,267	16,295	-28	6,668	149,680	6,640	4.6
Fife	347,430	37,147	38,894	-1,747	13,247	358,930	11,500	3.3
Glasgow City	598,840	68,582	77,829	-9,247	-8,903	580,690	-18,150	-3.0
Highland	208,650	22,159	23,817	-1,658	8,318	215,310	6,660	3.2
Inverclyde	87,060	8,899	11,250	-2,351	-3,169	81,540	-5,520	-6.3
Midlothian	78,960	9,066	8,415	651	-321	79,290	330	0.4
Moray	87,430	9,259	9,388	-129	-551	86,750	-680	-0.8
North Ayrshire	137,610	14,514	16,362	-1,848	-272	135,490	-2,120	-1.5
North Lanarkshire	322,300	38,899	34,993	3,906	-2,426	323,780	1,480	0.5
Orkney Islands	19,730	1,850	2,173	-323	363	19,770	40	0.2
Perth & Kinross	133,130	13,354	16,132	-2,778	9,838	140,190	7,060	5.3
Renfrewshire	176,390	19,339	20,523	-1,184	-5,616	169,590	-6,800	-3.9
Scottish Borders	105,860	10,671	13,342	-2,671	7,051	110,240	4,380	4.1
Shetland Islands	22,860	2,491	2,138	353	-1,333	21,880	-980	-4.3
South Ayrshire	113,540	10,450	14,573	-4,123	2,253	111,670	-1,870	-1.6
South Lanarkshire	304,760	32,944	33,808	-864	3,774	307,670	2,910	1.0
Stirling	83,060	8,906	9,103	-197	4,947	87,810	4,750	5.7
West Dunbartonshire	95,320	10,372	11,691	-1,319	-2,761	91,240	-4,080	-4.3
West Lothian	150,080	20,174	14,600	5,574	10,046	165,700	15,620	10.4
						0		
NHS Board areas								
Ayrshire & Arran	373,150	37,698	45,683	-7,985	1,285	366,450	-6,700	-1.8
Borders	105,860	10,668	13,340	-2,672	7,059	110,247	4,387	4.1
Dumfries & Galloway	148,520	14,128	18,377	-4,249	3,759	148,030	-490	-0.3
Fife	347,430	37,147	38,894	-1,747	13,175	358,858	11,428	3.3
Forth Valley	274,660	30,404	30,625	-221	11,614	286,053	11,393	4.1
Grampian	532,770	55,407	52,443	2,964	-5,845	529,889	-2,881	-0.5
Greater Glasgow & Clyde ²	1,225,030	134,834	148,433	-13,599	-19,847	1,191,584	-33,446	-2.7
Highland ²	300,390	30,270	35,598	-5,328	11,639	306,701	6,311	2.1
Lanarkshire	556,350	63,733	60,121	3,612	-1,823	558,139	1,789	0.3
Lothian	760,940	86,347	80,607	5,740	34,630	801,310	40,370	5.3
Orkney	19,730	1,850	2,173	-323	363	19,770	40	0.2
Shetland	22,860	2,491	2,138	353	-1,333	21,880	-980	-4.3
Tayside	395,900	39,985	48,016	-8,031	3,770	391,639	-4,261	-1.1
Western Isles	28,600	2,458	3,899	-1,441	-809	26,350	-2,250	-7.9
Argyll & Clyde ³	428,590	44,207	51,734	-7,527	-7,560	413,503	-15,087	-3.5
Greater Glasgow & Clyde pt.	336,850	36,096	39,953	-3,857	-10,880	322,113	-14,737	-4.4
Highland pt.	91,740	8,111	11,781	-3,670	3,320	91,390	-350	-0.4
Greater Glasgow ³	888,180	98,738	108,480	-9,742	-8,967	869,471	-18,709	-2.1
Highland ³	208,650	22,159	23,817	-1,658	8,319	215,311	6,661	3.2

¹ Includes movements to/from armed forces and an adjustment for a recurring unattributable population change based on the 2001 Census, which is assumed to be unmeasured migration. See the "Notes and Definitions" section for more information on unattributable population change.

Also includes changes in the number of armed forces stationed in Scotland.

² New NHS Board areas including parts of former Argyll & Clyde.

³ Former NHS Board areas (before dissolution of Argyll & Clyde on 1 April 2006).

Table 7 Age structure of administrative areas: 30 June 2006

	Males				Females				Sex Ratio ³
	Average Age ¹	% under 16	% working age	% pension - able age ²	Average Age ¹	% under 16	% working age	% pension - able age ²	
SCOTLAND	38	19	67	14	41	17	59	24	0.93
Council areas									
Aberdeen City	38	16	70	13	41	15	62	23	0.97
Aberdeenshire	39	20	66	14	41	19	59	23	0.98
Angus	40	19	64	17	43	17	55	27	0.93
Argyll & Bute	41	17	65	17	44	17	54	29	0.99
Clackmannanshire	38	20	66	14	41	19	59	23	0.94
Dumfries & Galloway	42	18	63	19	44	17	54	29	0.94
Dundee City	38	18	66	16	41	15	59	25	0.90
East Ayrshire	39	19	66	15	42	17	58	25	0.93
East Dunbartonshire	39	20	64	15	43	18	57	26	0.93
East Lothian	39	21	63	16	42	19	56	25	0.92
East Renfrewshire	38	22	63	15	42	19	56	25	0.91
Edinburgh, City of	37	16	71	12	40	14	65	21	0.93
Eilean Siar	41	18	65	17	44	17	53	30	0.97
Falkirk	38	20	66	14	41	18	59	23	0.94
Fife	39	19	66	14	41	17	58	25	0.93
Glasgow City	36	18	71	12	40	16	63	21	0.92
Highland	40	19	65	15	43	17	57	26	0.96
Inverclyde	39	19	66	14	42	17	58	26	0.91
Midlothian	39	21	65	14	41	19	58	23	0.90
Moray	39	19	66	15	42	18	56	26	1.00
North Ayrshire	39	20	64	15	42	17	57	25	0.90
North Lanarkshire	37	21	66	13	40	18	60	22	0.92
Orkney Islands	41	19	65	16	43	18	55	27	0.97
Perth & Kinross	41	19	64	17	43	17	55	28	0.94
Renfrewshire	38	20	66	14	41	17	59	24	0.91
Scottish Borders	41	19	63	17	43	17	55	28	0.94
Shetland Islands	39	20	66	13	41	20	56	24	1.01
South Ayrshire	41	18	64	18	44	16	55	29	0.91
South Lanarkshire	38	20	66	14	41	18	59	24	0.92
Stirling	38	20	65	14	41	18	59	24	0.91
West Dunbartonshire	38	20	67	13	41	17	59	24	0.90
West Lothian	37	22	67	11	39	20	61	19	0.94
NHS Board areas									
Ayrshire & Arran	40	19	65	16	42	17	57	26	0.91
Borders	41	19	63	17	43	17	55	28	0.94
Dumfries & Galloway	42	18	63	19	44	17	54	29	0.94
Fife	39	19	66	14	41	17	58	25	0.93
Forth Valley	38	20	66	14	41	18	59	23	0.93
Grampian	39	19	68	14	41	17	60	23	0.98
Greater Glasgow & Clyde ⁴	39	19	68	13	41	17	62	21	0.92
Highland ⁴	40	19	65	16	43	17	58	25	0.97
Lanarkshire	38	20	66	13	41	18	59	23	0.92
Lothian	37	18	69	13	40	16	62	22	0.93
Orkney	41	19	65	16	43	18	55	27	0.97
Shetland	39	20	66	13	41	20	56	24	1.01
Tayside	40	19	65	16	42	17	57	27	0.93
Western Isles	41	18	65	17	44	17	53	30	0.97
Argyll & Clyde ⁵	39	19	66	15	42	17	58	25	0.93
Greater Glasgow & Clyde pt.	45	20	67	14	41	17	64	18	0.91
Highland pt.	41	17	65	17	44	17	61	23	0.99
Greater Glasgow ⁵	37	19	69	13	40	16	61	23	0.92
Highland ⁵	40	19	65	15	43	17	57	26	0.96

¹ The average is the arithmetic mean age of a population count for a particular area.

² Pensionable age is 65 for men and 60 for women.

³ The sex ratio is the male population divided by the female population.

⁴ New NHS Board areas including parts of former Argyll & Clyde.

⁵ Former NHS Board areas (before dissolution of Argyll & Clyde on 1 April 2006).

Table 8 Rest of UK/Overseas moves by age group: 2005-2006**Numbers**Movements between Scotland and the rest of the UK ¹

	0-15	16-24	25-34	35-44	45-54	55-64	65-74	75-84	85+	All ages
IN	8,012	12,515	13,076	8,527	4,830	3,812	1,484	745	334	53,335
OUT	6,874	10,219	13,227	6,472	3,445	2,259	1,088	566	263	44,413
NET	1,138	2,296	-151	2,055	1,385	1,553	396	179	71	8,922

Movements between Scotland and Overseas (including asylum seekers; excluding unmeasured migration adjustment) ²

	0-15	16-24	25-34	35-44	45-54	55-64	65-74	75-84	85+	All ages
IN	5,661	14,455	14,550	4,245	1,864	883	386	133	23	42,200
OUT	4,612	6,773	8,689	4,297	2,309	1,507	737	395	181	29,500
NET	1,049	7,682	5,861	-52	-445	-624	-351	-262	-158	12,700

Total net migration (including asylum seekers, rounding and unmeasured migration adjustments) ³

	0-15	16-24	25-34	35-44	45-54	55-64	65-74	75-84	85+	All ages
NET	2,177	9,485	5,616	2,259	999	893	-14	-137	-111	21,167

PercentagesMovements between Scotland and the rest of the UK ¹

	0-15	16-24	25-34	35-44	45-54	55-64	65-74	75-84	85+	All ages
IN	15	23	25	16	9	7	3	1	1	100
OUT	15	23	30	15	8	5	2	1	1	100

Movements between Scotland and Overseas (including asylum seekers; excluding unmeasured migration adjustment) ²

	0-15	16-24	25-34	35-44	45-54	55-64	65-74	75-84	85+	All ages
IN	13	34	34	10	4	2	1	0	0	100
OUT	16	23	29	15	8	5	2	1	1	100

¹ National Health Service Central Register (NHSCR) patient movements mid-2005 to mid-2006.² Totals are based primarily on International Passenger Survey (IPS) data. However, the sample size in Scotland is too small to give an age breakdown so an age distribution is assumed using NHSCR data.³ Note that the movements between Scotland and the rest of the UK and overseas will not sum to the total net migration as they exclude unmeasured migration and rounding adjustments.

Table 9 Land area and population density, by administrative area: 30 June 2006

	Estimated population 30 June 2006	Area ¹ (sq km)	Persons ² per sq km
SCOTLAND	5,116,900	77,925	66
Council areas			
Aberdeen City	206,880	186	1,114
Aberdeenshire	236,260	6,313	37
Angus	109,320	2,182	50
Argyll & Bute	91,390	6,909	13
Clackmannanshire	48,900	159	308
Dumfries & Galloway	148,030	6,426	23
Dundee City	142,170	60	2,376
East Ayrshire	119,290	1,262	95
East Dunbartonshire	105,460	175	604
East Lothian	92,830	679	137
East Renfrewshire	89,290	174	514
Edinburgh, City of	463,510	264	1,758
Eilean Siar	26,350	3,071	9
Falkirk	149,680	297	503
Fife	358,930	1,325	271
Glasgow City	580,690	175	3,309
Highland	215,310	25,659	8
Inverclyde	81,540	160	508
Midlothian	79,290	354	224
Moray	86,750	2,238	39
North Ayrshire	135,490	885	153
North Lanarkshire	323,780	470	689
Orkney Islands	19,770	990	20
Perth & Kinross	140,190	5,286	27
Renfrewshire	169,590	261	650
Scottish Borders	110,240	4,732	23
Shetland Islands	21,880	1,466	15
South Ayrshire	111,670	1,222	91
South Lanarkshire	307,670	1,772	174
Stirling	87,810	2,187	40
West Dunbartonshire	91,240	159	574
West Lothian	165,700	427	388
NHS Board areas			
Ayrshire & Arran	366,450	3,377	109
Borders	110,247	4,732	23
Dumfries & Galloway	148,030	6,426	23
Fife	358,858	1,325	271
Forth Valley	286,053	2,633	109
Grampian	529,889	8,736	61
Greater Glasgow & Clyde ³	1,191,584	1,151	1,035
Highland ³	306,701	32,568	9
Lanarkshire	558,139	2,181	256
Lothian	801,310	1,760	455
Orkney	19,770	990	20
Shetland	21,880	1,466	15
Tayside	391,639	7,508	52
Western Isles	26,350	3,071	9
Argyll & Clyde ⁴	413,503	7,505	55
Greater Glasgow & Clyde pt.	322,113	596	541
Highland pt.	91,390	6,909	13
Greater Glasgow ⁴	869,471	555	1,566
Highland ⁴	215,311	25,659	8

¹ See note on page 31. Figures may not add exactly because of rounding.² Persons per sq km has been calculated using actual, not rounded areas.³ New NHS Board areas including parts of former Argyll & Clyde.⁴ Former NHS Board areas (before dissolution of Argyll & Clyde on 1 April 2006).

6. Notes and Definitions

Population Covered

The estimated population of an area includes all those usually resident there, whatever their nationality. Students are treated as being resident at their term-time address. Members of UK and non-UK armed forces stationed in Scotland are included; UK forces stationed outside Scotland are excluded. Short-term international migrants are excluded.

Age

Population figures relate to 30 June of the year shown and ages relate to age last birthday.

Presentation of Results

Although the populations are tabulated in units, this does not imply accuracy to that level. The data are presented in units for the convenience of users wishing to compile non-standard aggregations without encountering rounding problems.

Administrative Areas

The composition of the NHS Board areas in terms of Council areas is summarised in the table below. From 1 April 2006 responsibility for NHS Argyll & Clyde was split between NHS Greater Glasgow (now known as Greater Glasgow and Clyde) and NHS Highland. The tables presented in this report present information for the new NHS Board areas, but also show data for the relevant component parts of NHS Argyll & Clyde.

Composition of NHS Board areas

NHS Board area	Council area
Ayrshire & Arran	East Ayrshire, North Ayrshire, South Ayrshire
Borders	Scottish Borders
Dumfries & Galloway	Dumfries & Galloway
Fife	Fife
Forth Valley	Clackmannanshire, Falkirk (part), Stirling (part), Perth & Kinross (part)
Grampian	Aberdeen City, Aberdeenshire, Moray
Greater Glasgow & Clyde ¹	East Dunbartonshire, East Renfrewshire, Glasgow City, Inverclyde, North Lanarkshire (part), Renfrewshire, South Lanarkshire (part), Stirling (part), West Dunbartonshire
Highland ¹	Highland, Argyll & Bute
Lanarkshire	North Lanarkshire (part), South Lanarkshire (part), West Lothian (part), Falkirk (part)
Lothian	East Lothian, City of Edinburgh, Midlothian, West Lothian (part), Falkirk (part)
Orkney	Orkney Islands
Shetland	Shetland Islands
Tayside	Angus, Dundee City, Perth & Kinross (part)
Western Isles	Eilean Siar

¹ New NHS Board areas including parts of former Argyll & Clyde.

Note: In practice there are some other very small "slivers" where NHS Board and Council area boundaries cross.

Land Area

The land areas used to calculate the population density information presented in Table 9 were derived from digital boundaries used for the 2001 Census.

Migration Data Sources

Migration is the most difficult component of population change to estimate. The other components (births and deaths) are estimated using data from the civil registration system, which is considered to be virtually complete. In contrast, there is no comprehensive system which registers migration in the UK - either moves to or from the rest of the world, or moves within the UK. Estimates of migration therefore have to be based on survey data and the best proxy data that exist.

Migration is derived from three key sources of data. The National Health Service Central Register (NHSCR) for moves between health board areas within the UK, with migration at council area level within Scotland estimated using anonymised data from the Community Health Index (CHI). The International Passenger Survey (IPS) provides information on moves into and out of Scotland from outside the UK.

The NHSCR system records the movements of patients between NHS health board areas in the UK. Each time a patient transfers to a new NHS doctor in a different health board area, the NHSCR is notified and then the patient is considered to have made a migrant move. Counts of these re-registrations are used as a proxy indicator for moves within the UK.

The CHI holds records of people registered with an NHS doctor in Scotland. Unlike the NHSCR, the records provided to GROS contain the postcode of the patient's address, which enables migration to be estimated for councils, and for smaller areas. The approach used for estimating council-level migration involves matching CHI patient records which are extracted from a database which reflects the 'live' CHI system on two occasions one year apart. This matching of two extracts, say A and B, will create three sets of patients:

1. patients in extract A and extract B;
2. patients in extract A but not in extract B;
3. patients in extract B but not in extract A.

Patients in both extracts A and B (set 1) whose postcodes are not the same in each extract can be considered as those within-Scotland migrants who moved from one address in Scotland to another within Scotland between the dates of the two extracts. Patients in sets 2 and 3 are either migrants to or from Scotland; babies born between the two extracts; deaths between the dates of the two extracts; movements to or from the Armed Forces; and a small number of records that are for the same patient but have different CHI numbers because they could not be matched when the GP registration was processed.

Currently, GROS migration data derived from the NHSCR is considered to be the most reliable data available at health board level, so estimates from the CHI are controlled to ensure that they are consistent with the NHSCR data for moves across a health board boundary by origin, destination, age and sex.

The International Passenger Survey (IPS) is a continuous sample survey conducted by the Office for National Statistics at the principal air, sea and Channel Tunnel routes between

the UK and countries outside the British Isles. The sample of migrants contacted within the survey is small, particularly for Scottish migrants (around 140 survey contacts for Scotland in 2006), and therefore estimates derived from the IPS are subject to larger sampling and non-sampling errors, and are considered less reliable than UK-level estimates. Information about the country of origin and destination, and age of migrants is particularly subject to error. In addition to IPS data, additional information is received on migrants to and from the Republic of Ireland, asylum seekers and visitor switchers³.

International Migration

The method for estimating international migration into and out of Scotland combines data on intentions to migrate to Scotland based on the IPS, along with estimates of data on migration from Ireland, visitor switchers³ and asylum seekers. An estimate for unmeasured migration is also included and this is explained in more detail below. The Office for National Statistics (ONS) produce an estimate of Total International Migration (TIM) which is similar to this approach, although it includes an adjustment for migrant switchers (people who intend to stay for one year but stay for a shorter period), and use a modified methodology for visitor switchers. More information on the ONS method can be found in their publication Total International Migration 2005 which is available on their website through the following link:

http://www.statistics.gov.uk/downloads/theme_population/MN_no32.pdf

Research has been carried out through the National Statistics Quality Review of International Migration and, latterly, the ONS Improving Population and Migration Statistics (IMPS) project. More details on this work can be found on the ONS website through the following link:

<http://www.statistics.gov.uk/about/data/methodology/specific/population/future/imps/default.asp>

As a result of this research ONS have revised the TIM methodology and a full description of the methodology can be found on the IMPS updates page on the previous link.

Given the completion of this research, GROS plan, over the summer, to carry out a full review of the methodology used to estimate international migration for the purposes of mid-year population estimates. An announcement on the conclusions of the review and the requirement for any revisions to the mid-year population estimates series will be made as soon as the evaluation has been completed.

Distribution of International Migrants to Scotland

For the mid-2006 population estimates, international migration to NHS Boards was allocated by using both overseas outflows and moves from Scotland to the rest of the UK recorded on the NHS Central Register (NHSCR). These averaged proportions were used to allocate international outflows from NHS Boards. The proportion of international inflows to NHS Boards in Scotland recorded on the NHSCR were used to allocate the international inflows.

³ Visitor switchers are visitors who enter or leave the UK intending to stay in the destination country for less than a year, but who actually stay for a year or longer and therefore become migrants.

The overseas inflow from the NHSCR was used to give an age and sex distribution to international in-migrants, while the age/sex distribution of moves to the rest of the UK recorded by the NHSCR was used for international out-migrants.

The issue of how international migration is allocated to NHS Boards will be considered further once the results of the work being carried out as part of the quality review into international migration are known.

Unmeasured Migration

The results of the 2001 Census indicated that the previously published 2000 mid-year estimates had been overestimated by some 50,000 as a result of cumulative errors in estimating migration (mostly by young men) during the 1980s and 1990s. As a result, the migration estimates for 1982-2000 were revised. It is likely that these migration errors were the result of an underestimation of young male migration from Scotland to the rest of the world during this period, but if moves from Scotland to the rest of the UK had been under-recorded, the implied increase in overseas migration would be less.

To ensure that migration estimates do not continue to be overestimated, an adjustment was included in the 2002 and 2003 mid-year estimates. The estimated civilian migration component included an adjustment for unmeasured migration. At the Scotland level, this amounted to an outflow of -2,600. Further investigation has shown that this adjustment should be -1,500 and this is the adjustment which has been used in the mid-2004 and subsequent estimates. It is planned to look at this element of unmeasured migration again in conjunction with other development work on migration. Further work will make it possible to provide historic estimates of flows between Scotland and the rest of the UK and overseas consistent with the revised population estimates. More information on the cumulative migration error since 1981 can be found in the GROS paper "Comparison with Previous Estimates and Implications for Revisions" on the GROS website through the following link <http://www.gro-scotland.gov.uk/files/compest.pdf> or by contacting GROS Customer Services.

7. Notes on Statistical Publications

ENQUIRIES ABOUT THIS PUBLICATION Enquiries should be addressed to: *Statistics Customer Services, General Register Office for Scotland, Ladywell House, Edinburgh, EH12 7TF* Telephone: (0131) 314 4243, Fax: (0131) 314 4696, E-mail: customer@gro-scotland.gsi.gov.uk

NATIONAL STATISTICS This is a National Statistics publication. It has been produced to high professional standards set out in the National Statistics Code of Practice and Release Practice Protocol (http://www.statistics.gov.uk/about_ns/cop/default.asp). These statistics undergo regular quality assurance reviews to ensure that they meet customer needs. They are produced free from any political interference.

THE GENERAL REGISTER OFFICE FOR SCOTLAND (GROS) GROS is the department of the devolved Scottish Administration responsible for the registration of births, marriages, civil partnerships, deaths, divorces and adoptions in Scotland. We are responsible for the Census of Population in Scotland which we use, with other sources of information, to produce population and household statistics. We make available important information for family history. Our website is www.gro-scotland.gov.uk.

OTHER GROS STATISTICS Further detailed statistics produced by GROS are available from the statistics pages of the GROS website (<http://www.gro-scotland.gov.uk/statistics/index.html>). Statistics from the 2001 Census are on the Scotland's Census Results On-Line website (www.scrol.gov.uk) and on the Census section of the main website (<http://www.gro-scotland.gov.uk/census/index.html>).

Information about future publications is provided on the GROS website (<http://www.groscotland.gov.uk/futurepb.html>). If you would like to receive notification of forthcoming statistical publications, you can register your interest on the Scottish Executive ScotStat web site at www.scotland.gov.uk/Topics/Statistics/scotstat/Intro.

COMPLAINTS AND SUGGESTIONS If you are not satisfied with our service, please write to Kirsty MacLachlan, Head of Demography Division, Room 1/2/7, Ladywell House, Ladywell Road, Edinburgh, EH12 7TF, Telephone: (0131) 314 4242, E-mail: kirsty.maclachlan@gro-scotland.gsi.gov.uk.

We also welcome any comments or suggestions that would help us to improve our standards of service.

RELATED ORGANISATIONS

ORGANISATION	CONTACT
SCOTTISH EXECUTIVE (SE): The SE forms the bulk of the devolved Scottish Administration. The aim of the statistical service in the SE is to provide relevant and reliable statistical information, analysis and advice that meets the needs of government, business and the people of Scotland	<i>Ryan Stewart, Office of the Chief Statistician, Scottish Executive, 3rd Floor West Rear, St Andrews House, Edinburgh, EH1 3DG</i> Telephone: (0131) 244 0442 Fax: (0131) 244 0335 E-mail: statistics.enquiries@scotland.gsi.gov.uk Website: http://www.scotland.gov.uk/Topics/Statistics
The OFFICE FOR NATIONAL STATISTICS (ONS) is responsible for producing a wide range of economic and social statistics. It also, for England and Wales, registers life events and holds the Census of Population.	<i>Customer Contact Centre, Room 1.015, Office for National Statistics, Cardiff Road, Newport, NP10 8XG</i> Telephone: 0845 601 3034 Minicom: 01633 812399 Fax: 01633 652747 E-mail: info@statistics.gsi.gov.uk Website: www.statistics.gov.uk
The NORTHERN IRELAND STATISTICS AND RESEARCH AGENCY (NISRA) is Northern Ireland's official statistics organisation. The Agency also has responsibility, in Northern Ireland, for the registration of births, marriages, adoptions and deaths and the Census of Population.	<i>Northern Ireland Statistics and Research Agency, McAuley House, 2-14 Castle Street, Belfast, BT1 1SA</i> Telephone 028 9034 8100 Fax 028 9034 8106 Website: www.nisra.gov.uk

© Crown Copyright. Brief extracts from the Crown Copyright material in General Register Office for Scotland publications may be reproduced provided the source is fully acknowledged.