

## MAIN POINTS

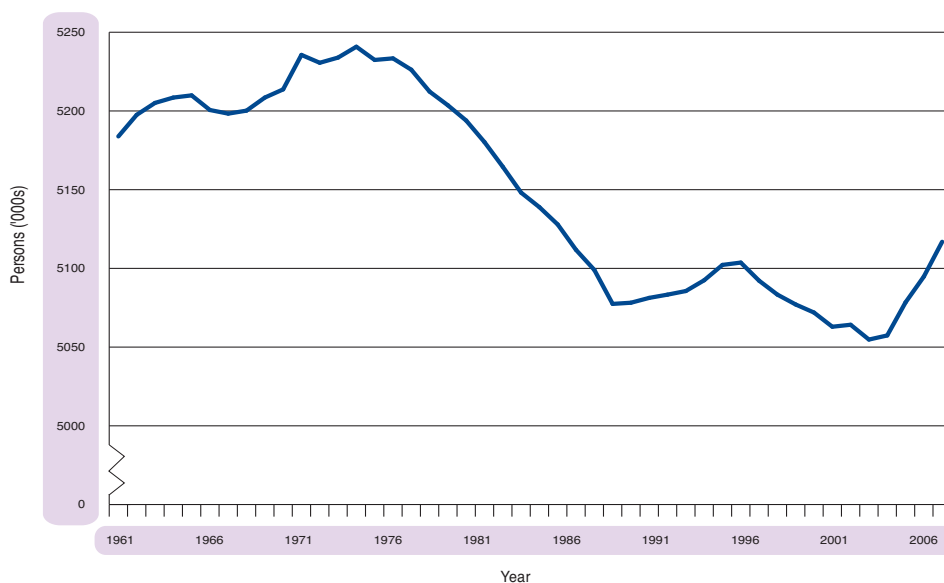
- The estimated population of Scotland on 30 June 2006 was 5,116,900, a rise of 22,100 on the previous year;
- Between mid-1996 and mid-2006, Scotland's population increased by 0.5 per cent (24,710) from 5.09 million to 5.12 million;
- In the year to 30 June 2006, there was a net migration gain of 8,900 from the rest of the UK and 12,700 from overseas;
- In the ten years to 30 June 2006, the population rose in exactly half of Scotland's 32 Council areas, with the largest percentage increase in West Lothian, and fell in the other 16 areas, with the largest percentage fall in Eilean Siar. The population also rose in exactly half of Scotland's 14 NHS Board areas, with the largest percentage increase in Lothian. The largest percentage decrease was in the Western Isles.

## INTRODUCTION

This factsheet provides a short summary of the mid-2006 population estimates for Scotland and the council areas and NHS Board areas within Scotland. There are also comparisons made with the population in earlier years. More detailed information on population estimates is available at the following web address:

<http://www.gro-scotland.gov.uk/statistics/publications-and-data/population-estimates/index.html>

**Figure 1: Mid-year population estimates for Scotland (in thousands), 1961-2006**



# MID-2006 POPULATION ESTIMATES IN SCOTLAND

## THE SCOTTISH PICTURE

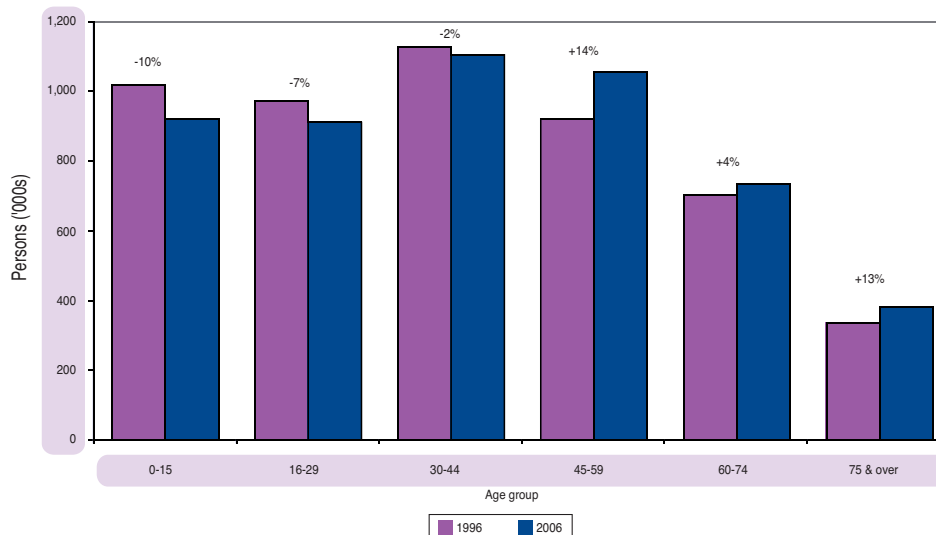
**Figure 1** shows how the population of Scotland has changed in the last 45 years. In 1961, there were 5.18 million people and, by 2006, this had fallen by 1.3 per cent to 5.12 million. The population rose slightly throughout most of the 1960s and the early 1970s, reaching a peak of 5.24 million in 1974. The population then fell steadily during the rest of the 1970s and the 1980s, to 5.08 million in 1988. There was a moderate increase during the early 1990s before a slightly larger fall in the late 1990s. The population reached its lowest level during the last 45 years in 2002 (5.05 million), although it has risen each year since.

The population at 30 June 2006 stood at 5.12 million, around 22,000 higher than the previous year. This increase was down to more people coming into Scotland from the rest of the UK and abroad than left to go in the opposite direction. The number of births and the number of deaths in the year to 30 June 2006 were more or less equal.

## AGE PROFILE

**Figure 2** shows that the age structure of the population has changed significantly since 1996. The ageing of the population is evident in the rises in the older age groups (14 per cent for 45-59 year olds, 4 per cent for those aged 60-74 and 13 per cent in the 75 and over age group) and the falls in the younger age groups (10 per cent for under 16s, 7 per cent for those aged 16-29 and 2 per cent in the 30-44 age group).

**Figure 2: The changing age structure of Scotland's population 1996-2006**

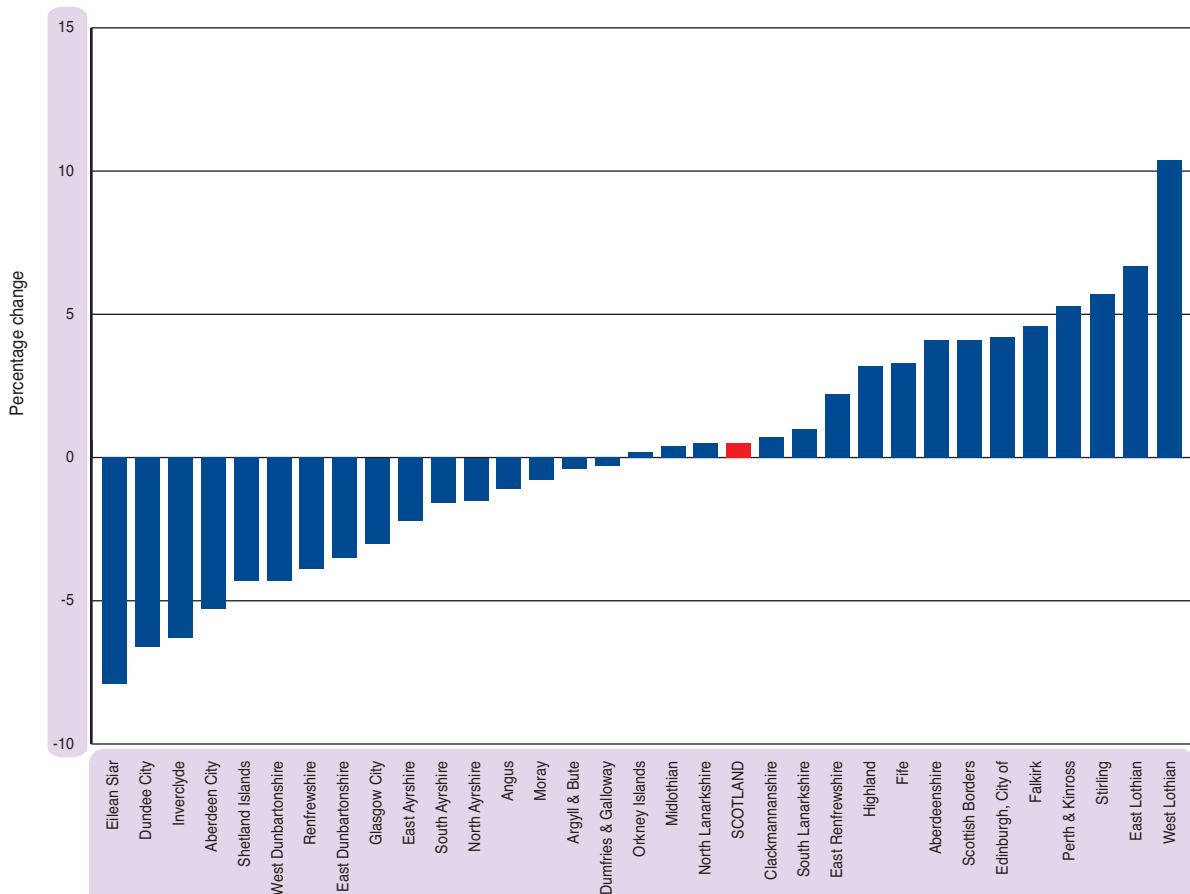


# MID-2006 POPULATION ESTIMATES IN SCOTLAND

## COUNCIL AREAS

**Figure 3** shows how the population in each of Scotland's 32 Council areas has changed in the period 1996 to 2006. Scotland's population increased very slightly, by 0.5 per cent, over this time. The largest percentage increases were in West Lothian (+10.4 per cent), East Lothian (+6.7 per cent), Stirling (+5.7 per cent) and Perth & Kinross (+5.3 per cent). The Council areas which had the largest decreases over the same period were Eilean Siar (-7.9 per cent), Dundee City (-6.6 per cent), Inverclyde (-6.3 per cent) and Aberdeen City (-5.3 per cent).

**Figure 3: Percentage change in population, Council areas, 1996-2006**

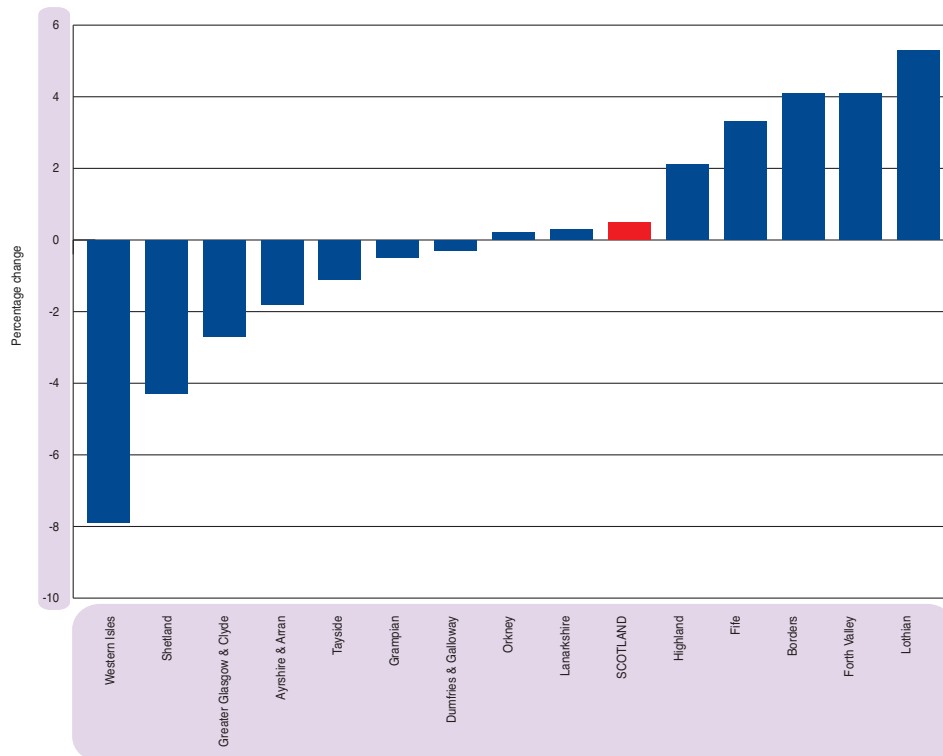


# MID-2006 POPULATION ESTIMATES IN SCOTLAND

## NHS BOARD AREAS

**Figure 4** shows how the population in each of Scotland's 14 NHS Board areas has changed between 1996 and 2006. The largest percentage increases were in Lothian (+5.3 per cent), Forth Valley (+4.1 per cent) and Borders (+4.1 per cent). The NHS Board areas which had the largest falls over the same period were the Western Isles (-7.9 per cent) and Shetland (-4.3 per cent).

**Figure 4:** Percentage change in population, NHS Board areas, 1996-2006



For further information on the availability of more detailed data and tables, please contact:

Statistics Customer Services  
General Register Office for Scotland  
Ladywell House  
EDINBURGH EH12 7TF

Telephone: 0131 314 4299

Fax: 0131 314 4696

Email: [customer@gro-scotland.gsi.gov.uk](mailto:customer@gro-scotland.gsi.gov.uk)